



CITIZEN



## Plot 5- The Coppice Ph2 - 40% Share

5 Kop Close, Brimfield, SY8 4FB

**5% deposit paid £98,000**



## Plot 5- The Coppice Ph2 -



Plot 5 The Coppice Ph2 40% Share Purchase price  
£98,000

Total Rent £393.73 pcm

Please note there is an 80% staircasing restriction on  
these homes.

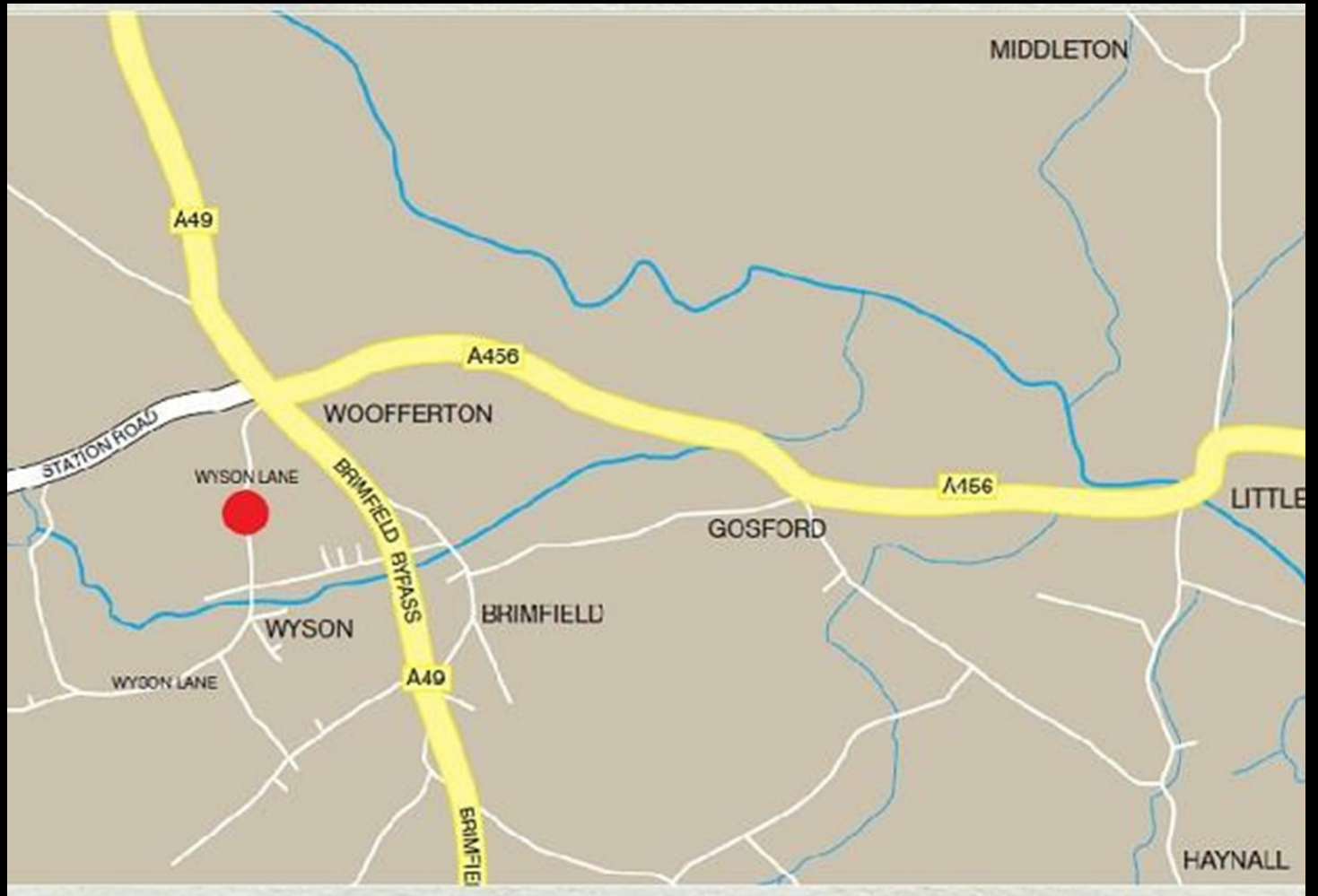
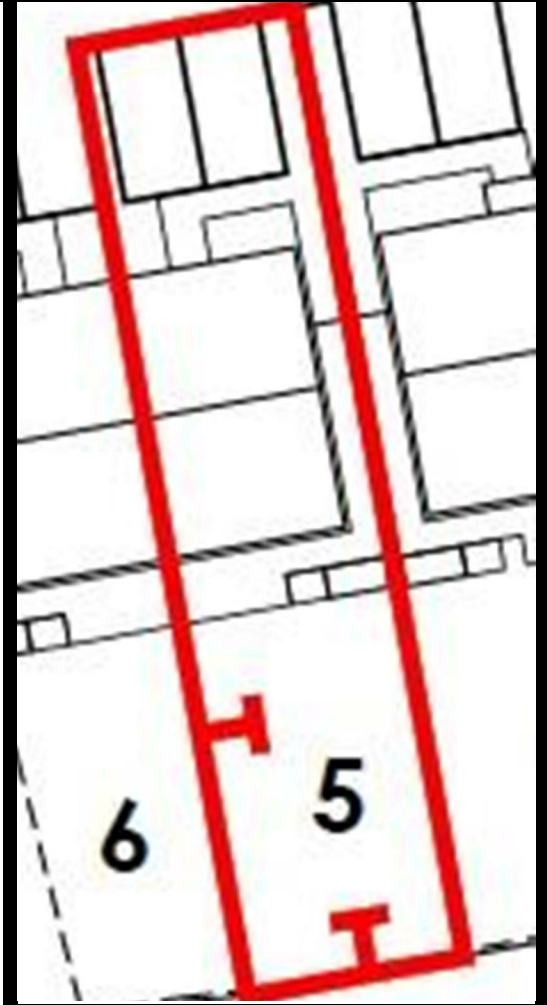
AVAILABLE NOW

All images/photographs are for illustrative purposes only  
(Photo shows Plot 12)

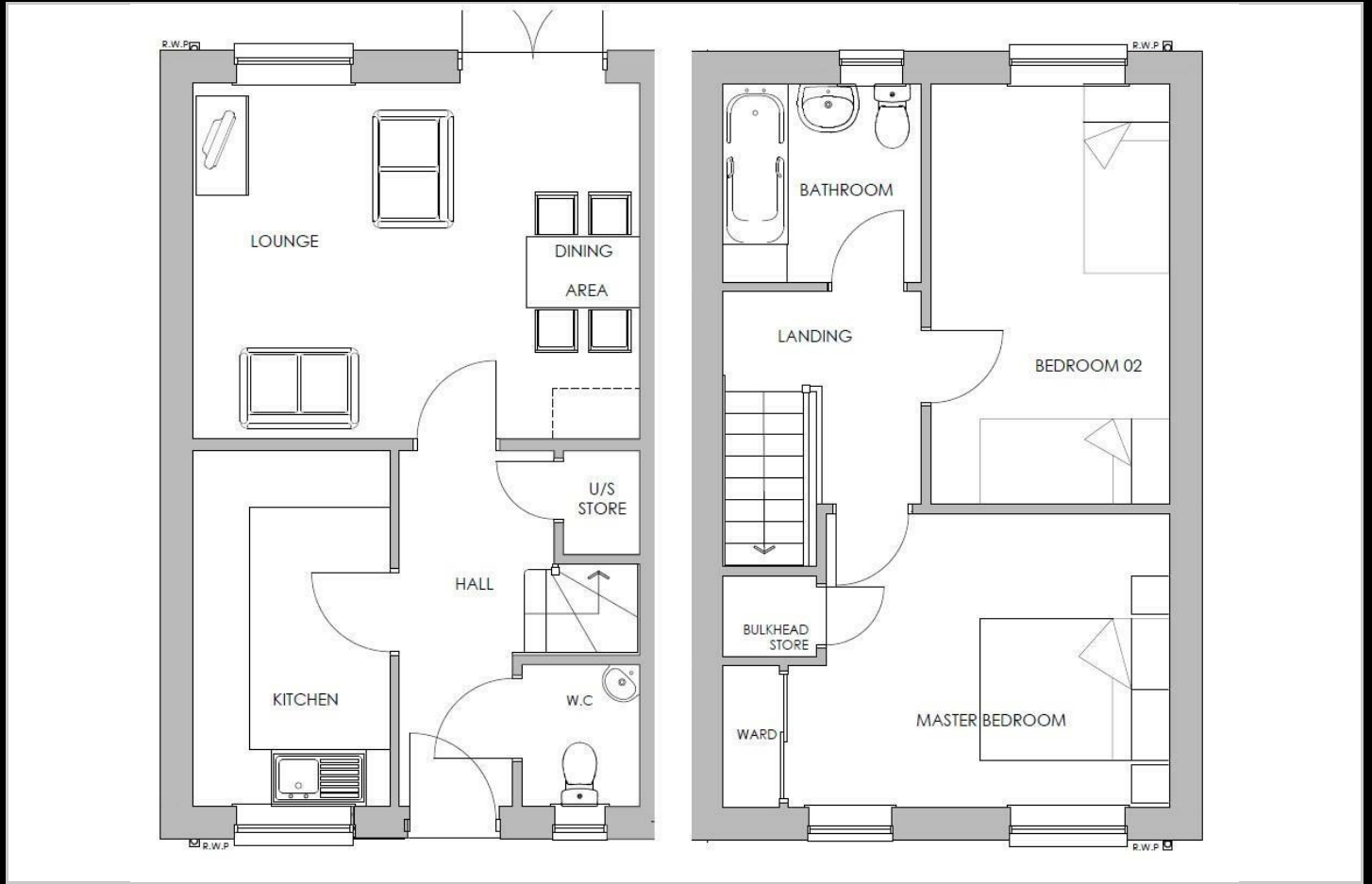
- New build
- 2 parking spaces
- Fitted kitchen with oven, hob & extractor
- 2 spacious bedrooms
- Semi detached
- Turf to rear garden
- Vinyl to wet areas
- UPVC double glazing
- downstairs cloakroom
- Near Ludlow



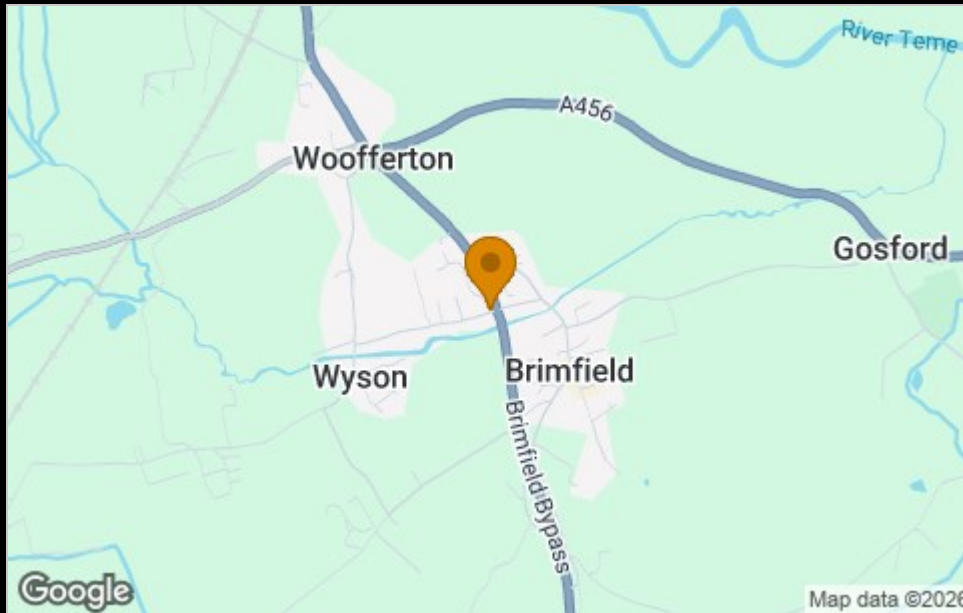
# Plot 5- The Coppice Ph2 -



## Floor Plan

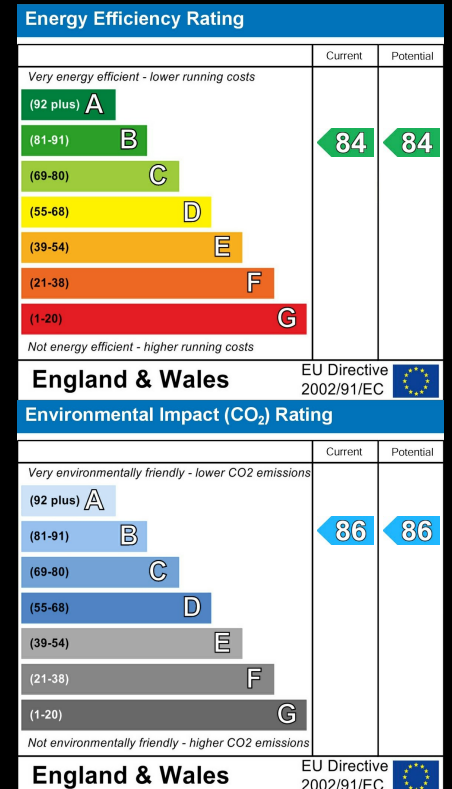


## Area Map



Please contact our sales team at [sales@citizenhousing.org.uk](mailto:sales@citizenhousing.org.uk) if you wish to arrange a viewing for this property or if you require further information.

## Energy Efficiency Graph



These particulars, whilst believed to be accurate are set out as a general outline only for guidance and do not constitute any part of an offer or contract. Intending purchasers should not rely on them as statements of representation of fact, but must satisfy themselves by inspection or otherwise as to their accuracy. No person in this firm's employment has the authority to make or give any representation or warranty in respect of the property.

4040 Lakeside, Solihull, West Midlands, B37 7YN

Email: [sales@citizenhousing.org.uk](mailto:sales@citizenhousing.org.uk) or visit [www.citizenhousing.org.uk](http://www.citizenhousing.org.uk)