



# Shared Ownership Resale Properties in Herefordshire



Please contact our Sales team on [Sales@citizenhousing.org.uk](mailto:Sales@citizenhousing.org.uk) if you wish to arrange a viewing or require further information on any of our resale properties.

4040 Lakeside, Solihull, West Midlands, B37 7YN  
Email: [sales@citizenhousing.org.uk](mailto:sales@citizenhousing.org.uk) or visit [www.citizenhousing.org.uk](http://www.citizenhousing.org.uk)



3 Ryeland Lane - 65% Share

Kingstone, Hereford, HR2 9TS

65% Shared Ownership - £175,500



# 3 Ryeland Lane - 65% Share



This lovely three-bedroom semi-detached house is now available in Kingstone, Herefordshire through Shared Ownership.

The property comprises of an entrance hallway with a downstairs WC and cloakroom on your right as you walk in and the modern kitchen dining room on the left. The separate living room is to the back of the house with double door access to the private garden.

Upstairs you'll find a well-appointed bathroom and three good sized bedrooms with the main bedroom having an ensuite shower room. This property benefits from off-street parking and a private rear garden.

Monthly Rent - £229.78  
Monthly Service Charge - £44.69

Total monthly charge of £274.47 is payable to Citizen Housing who will act as the landlord for the remaining 35%.

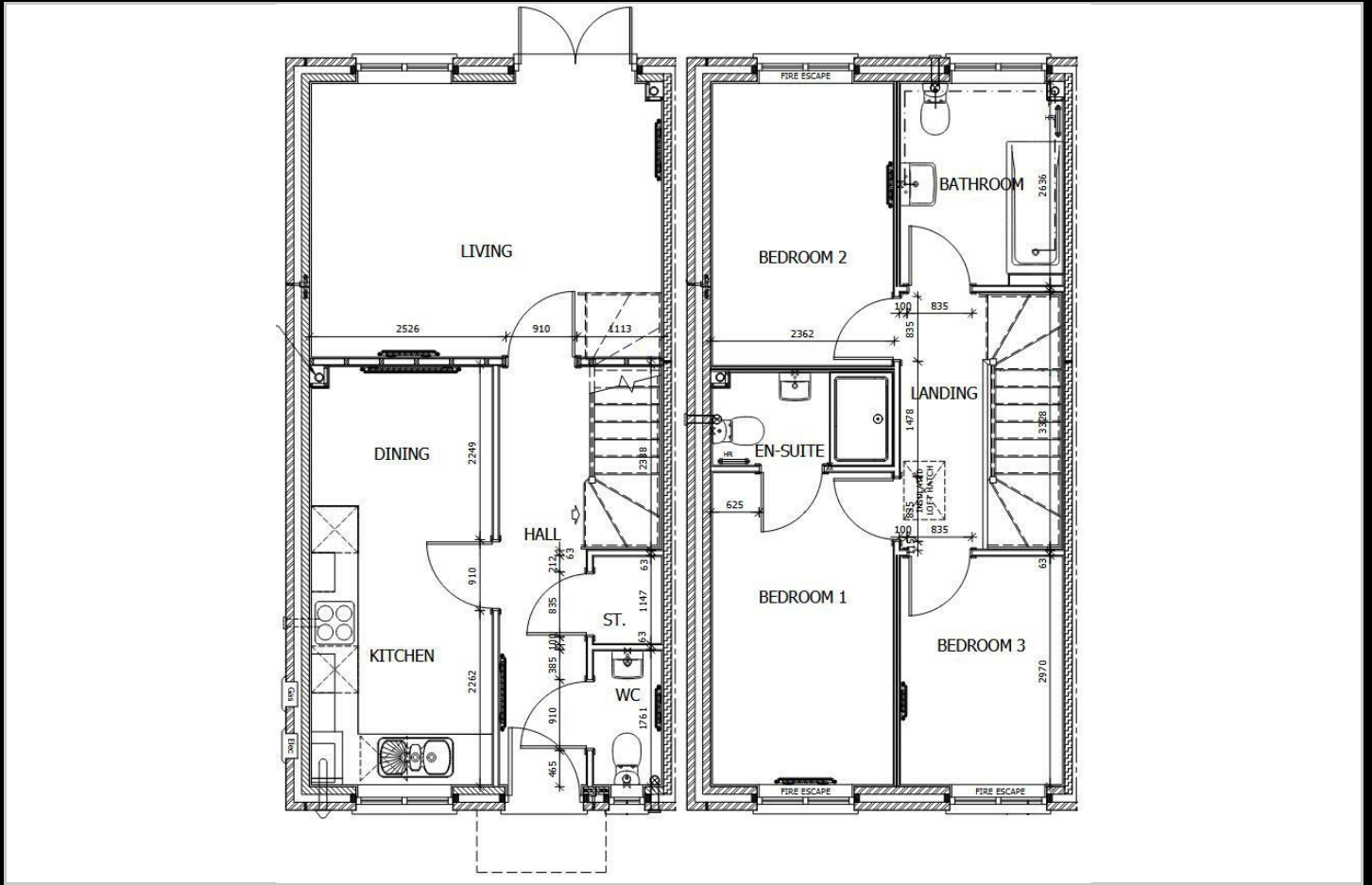
- 65% Shared Ownership
- Semi Detached House
- Modern Kitchen Diner
- Separate Lounge
- Downstairs WC
- Three good-sized Bedrooms
- Main Bedroom has Ensuite
- Well-appointed Bathroom
- Driveway to the side
- Private Rear Garden



# 3 Ryeland Lane - 65% Share



## Floor Plan

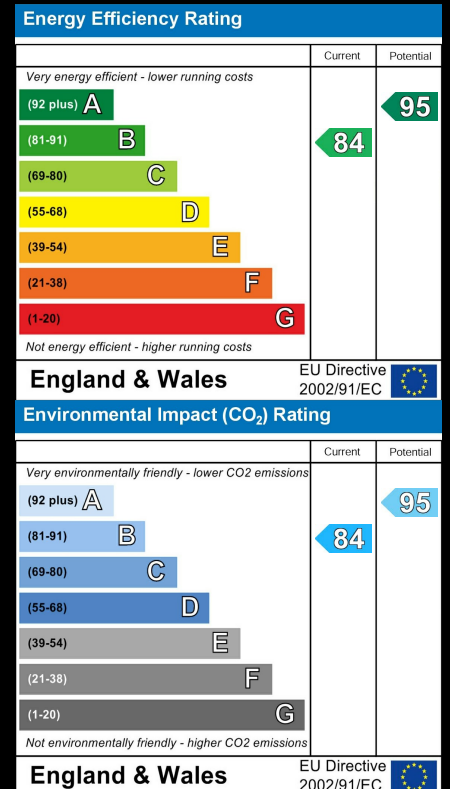


## Area Map



Please contact our sales team at [sales@citizenhousing.org.uk](mailto:sales@citizenhousing.org.uk) if you wish to arrange a viewing for this property or if you require further information.

## Energy Efficiency Graph



These particulars, whilst believed to be accurate are set out as a general outline only for guidance and do not constitute any part of an offer or contract. Intending purchasers should not rely on them as statements of representation of fact, but must satisfy themselves by inspection or otherwise as to their accuracy. No person in this firm's employment has the authority to make or give any representation or warranty in respect of the property.

4040 Lakeside, Solihull, West Midlands, B37 7YN

Email: [sales@citizenhousing.org.uk](mailto:sales@citizenhousing.org.uk) or visit [www.citizenhousing.org.uk](http://www.citizenhousing.org.uk)



## 3 Ryeland Lane

Kingstone, Hereford, HR2 9TS

**Price £270,000**



# 3 Ryeland Lane



This lovely three-bedroom semi-detached house is now available in Kingstone, Herefordshire.

There is a non-refundable fee of £350.00 to purchase this property.

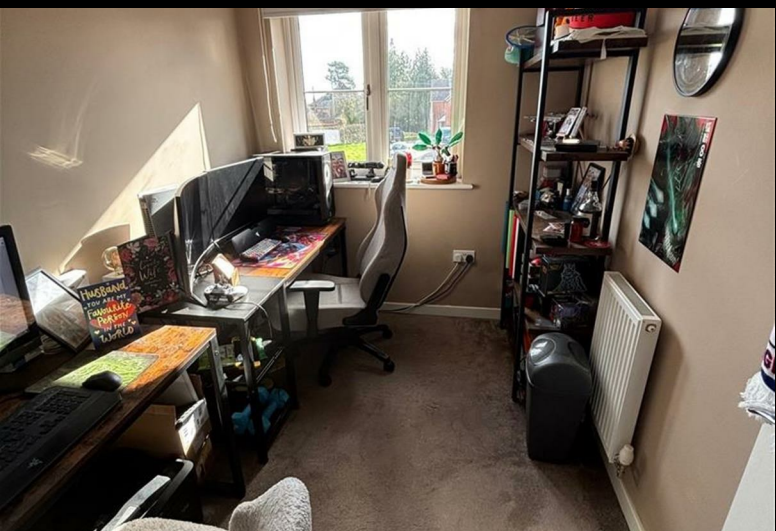
The property comprises of an entrance hallway with a downstairs WC and cloakroom on your right as you walk in and the modern kitchen dining room on the left. The separate living room is to the back of the house with double door access to the private garden.

Upstairs you'll find a well-appointed bathroom and three good sized bedrooms with the main bedroom having an ensuite shower room. This property benefits from off-street parking and a private rear garden.

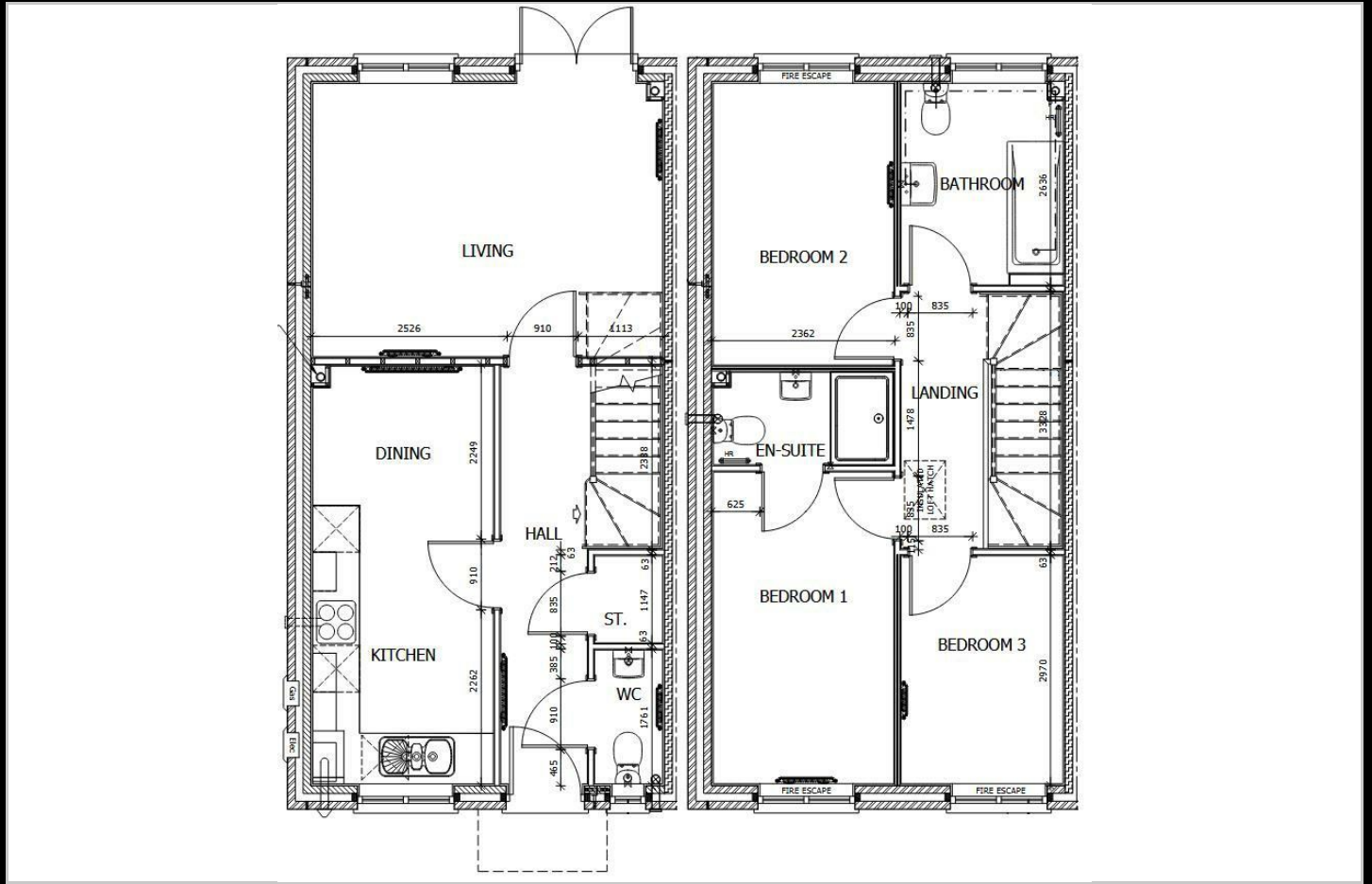
- Kingstone, Herefordshire
- Modern Kitchen Diner
- Downstairs WC
- Main Bedroom has Ensuite
- Driveway to the side
- Semi Detached House
- Separate Lounge
- Three good-sized Bedrooms
- Well-appointed Bathroom
- Private Rear Garden



# 3 Ryeland Lane



## Floor Plan

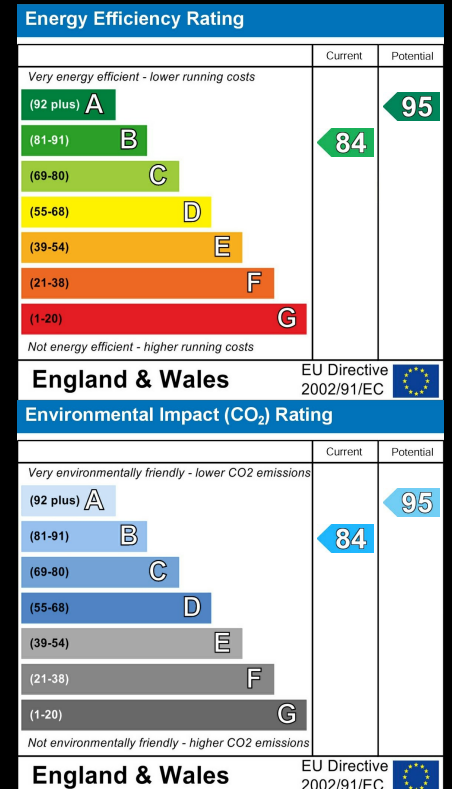


## Area Map



Please contact our sales team at [sales@citizenhousing.org.uk](mailto:sales@citizenhousing.org.uk) if you wish to arrange a viewing for this property or if you require further information.

## Energy Efficiency Graph



These particulars, whilst believed to be accurate are set out as a general outline only for guidance and do not constitute any part of an offer or contract. Intending purchasers should not rely on them as statements of representation of fact, but must satisfy themselves by inspection or otherwise as to their accuracy. No person in this firm's employment has the authority to make or give any representation or warranty in respect of the property.

4040 Lakeside, Solihull, West Midlands, B37 7YN

Email: [sales@citizenhousing.org.uk](mailto:sales@citizenhousing.org.uk) or visit [www.citizenhousing.org.uk](http://www.citizenhousing.org.uk)



CITIZEN



## 33 Chichester Close - 50% Share

Belmont, Herefordshire, HR2 7YU

**Price £100,000**



3



2



2



C

# 33 Chichester Close - 50% Share



This lovely three-bedroom end-terrace house is now available in Belmont, Hereford through Shared Ownership.

The property has lots of kerb appeal and comprises of a small entrance hallway with the downstairs WC on the left as you walk in and then into the lounge. To the back of the house is the separate dining room with access to the garden and the kitchen with a storage cupboard.

Upstairs you'll find a well-appointed bathroom and three good-sized bedrooms with the master bedroom having an ensuite shower room. This property benefits from off-street parking and a private rear garden.

Monthly Rent - £288.62  
Monthly Service Charge - £16.61

Total monthly charge of £305.23 is payable to Citizen Housing who will act as the landlord for the remaining 50%.

This property has the opportunity to staircase ownership and purchase the 100% share, please contact Citizen Housing for more information.

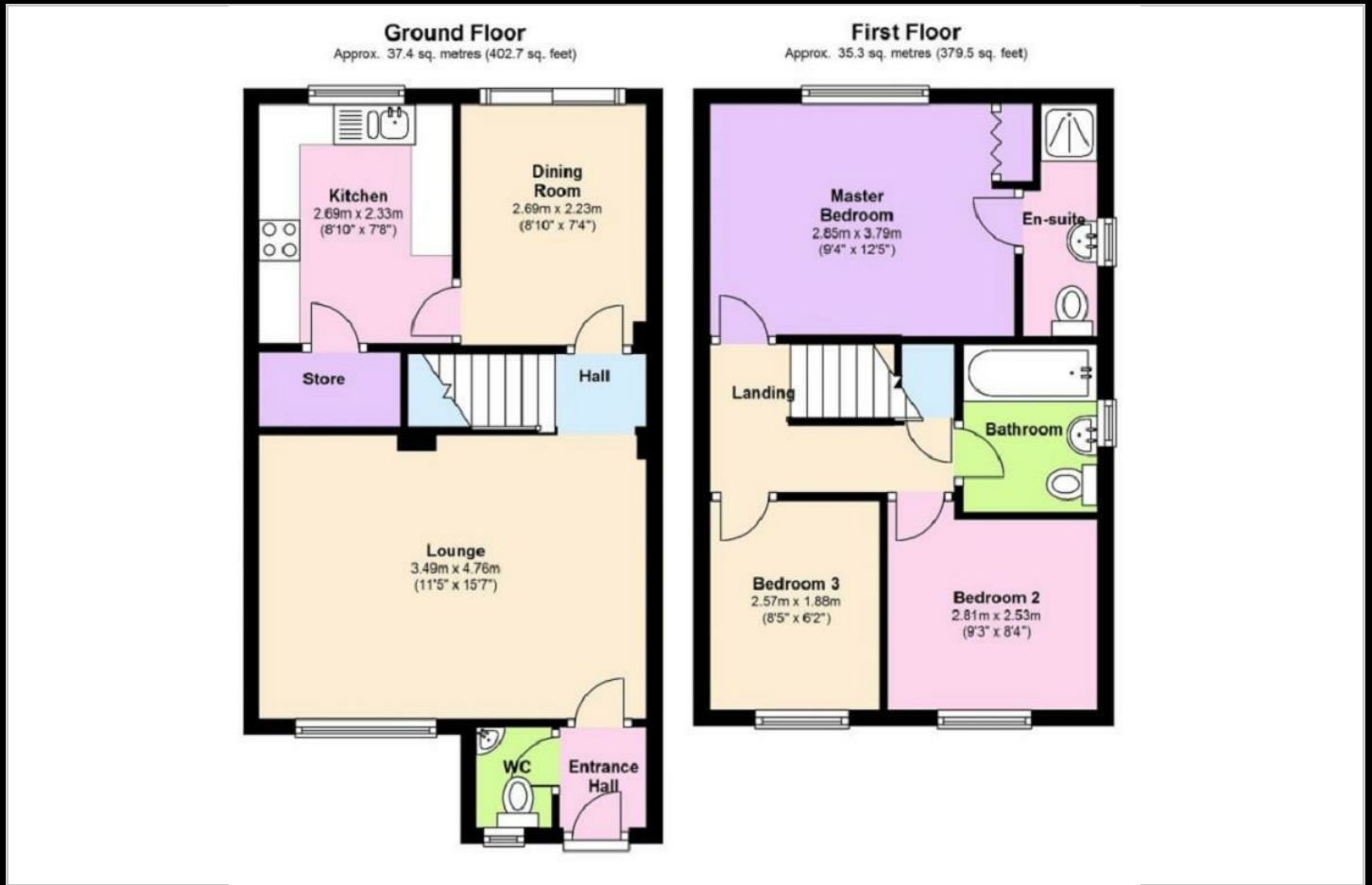
- 50% Shared Ownership
- Seperate Lounge
- Kitchen with Storage cupboard
- Three Bedrooms
- Well-appointed Bathroom
- End Terrace House
- Dining Room
- Downstairs WC
- Ensuite in Master Bedroom
- Driveway



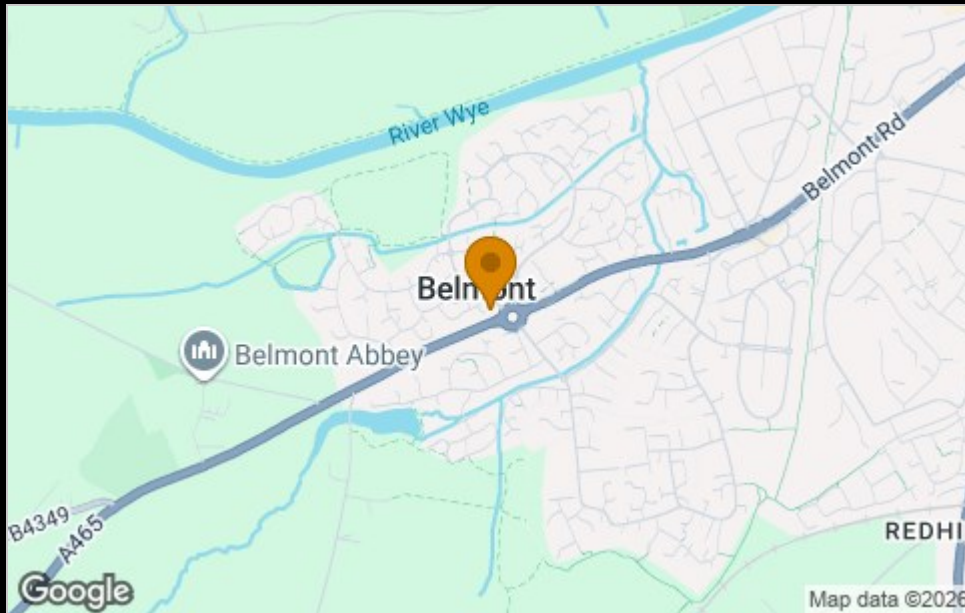
33 Chichester Close - 50%



## Floor Plan

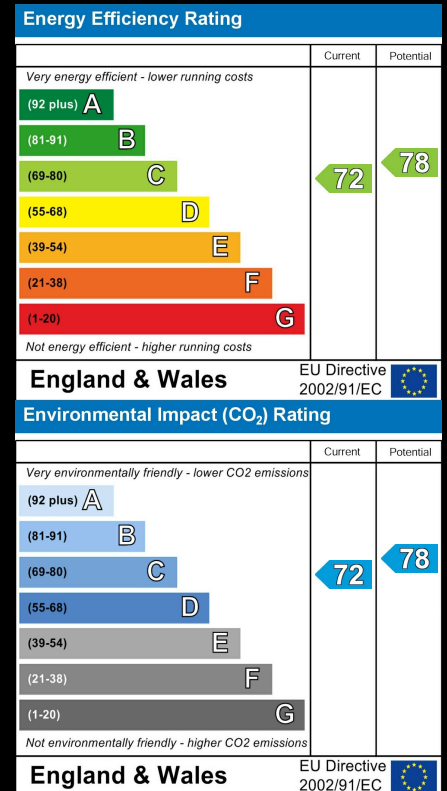


## Area Map



Please contact our sales team at [sales@citizenhousing.org.uk](mailto:sales@citizenhousing.org.uk) if you wish to arrange a viewing for this property or if you require further information.

## Energy Efficiency Graph



These particulars, whilst believed to be accurate are set out as a general outline only for guidance and do not constitute any part of an offer or contract. Intending purchasers should not rely on them as statements of representation of fact, but must satisfy themselves by inspection or otherwise as to their accuracy. No person in this firm's employment has the authority to make or give any representation or warranty in respect of the property.

4040 Lakeside, Solihull, West Midlands, B37 7YN

Email: [sales@citizenhousing.org.uk](mailto:sales@citizenhousing.org.uk) or visit [www.citizenhousing.org.uk](http://www.citizenhousing.org.uk)



CITIZEN



## 33 Chichester Close

Belmont, Hereford, HR2 7YU

**Price £200,000**



3



2



2



C

# 33 Chichester Close



This lovely three-bedroom end-terrace house is now available in Belmont, Hereford.

There is a non-refundable fee of £350.00 to purchase this property.

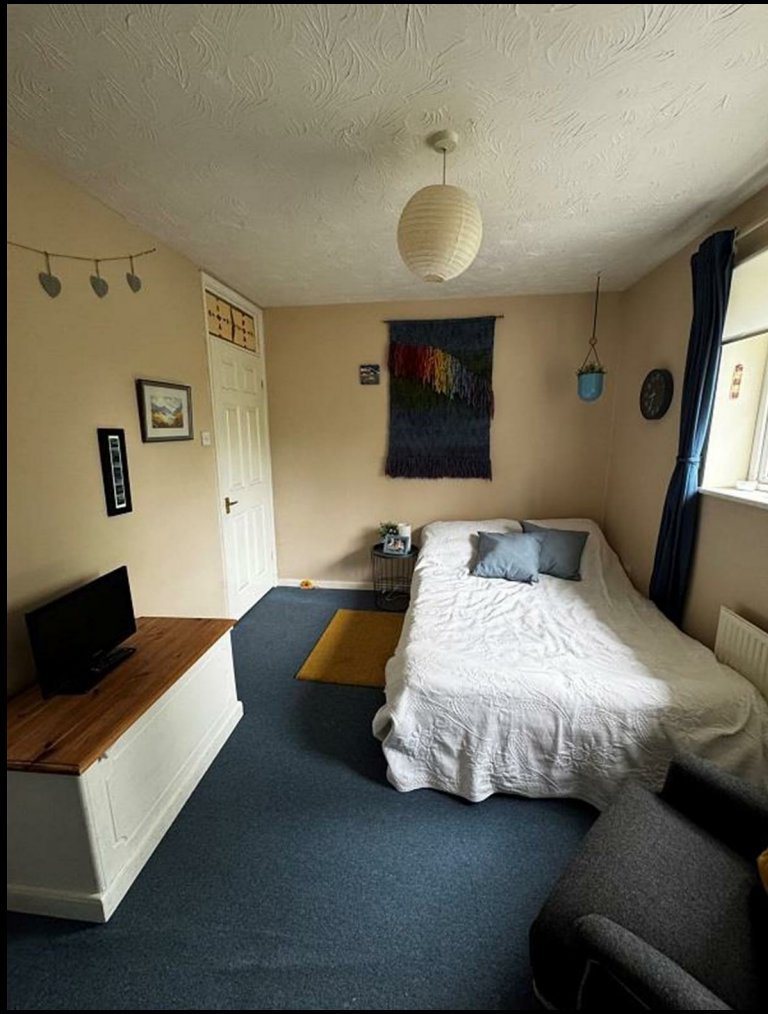
The property has lots of kerb appeal and comprises of a small entrance hallway with the downstairs WC on the left as you walk in and then into the lounge. To the back of the house is the separate dining room with access to the garden and the kitchen with a storage cupboard.

Upstairs you'll find a well-appointed bathroom and three good-sized bedrooms with the master bedroom having an ensuite shower room. This property benefits from off-street parking and a private rear garden.

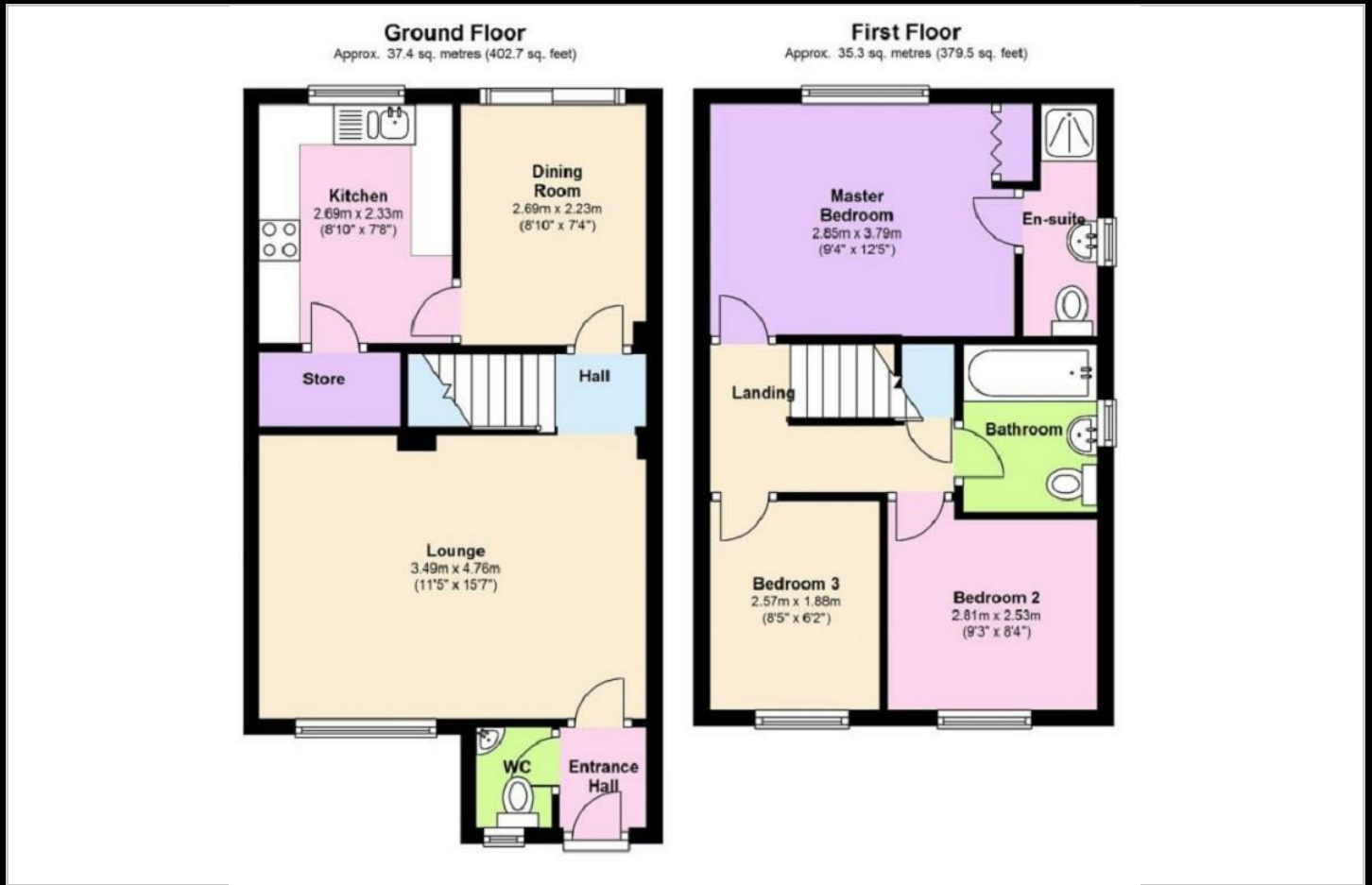
- Semi Detached House
- Dining Room
- Downstairs WC
- Ensuite in Master Bedroom
- Driveway
- Seperate Lounge
- Kitchen with Storage cupboard
- Three Bedrooms
- Well-appointed Bathroom
- Private Rear Garden



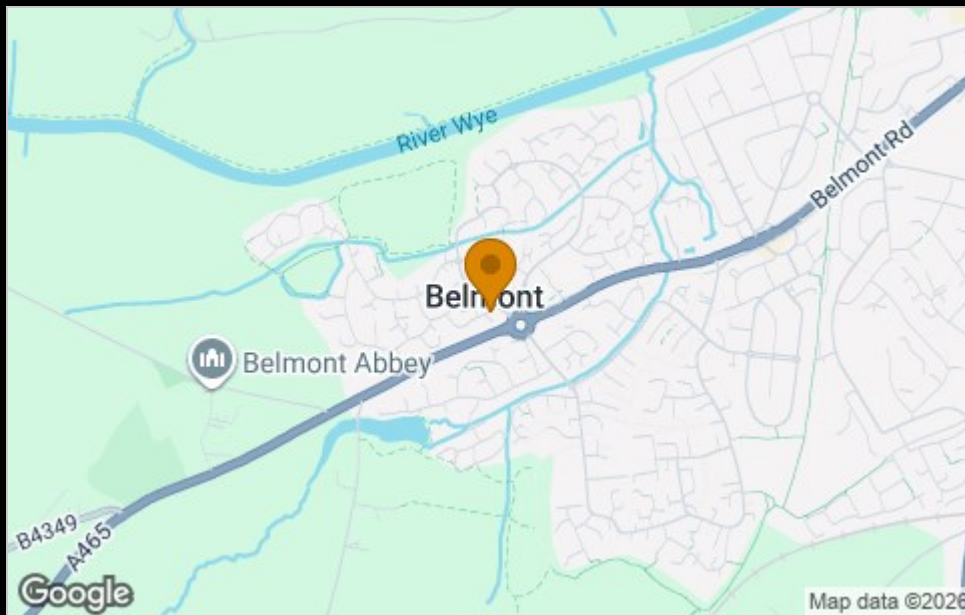
# 33 Chichester Close



## Floor Plan

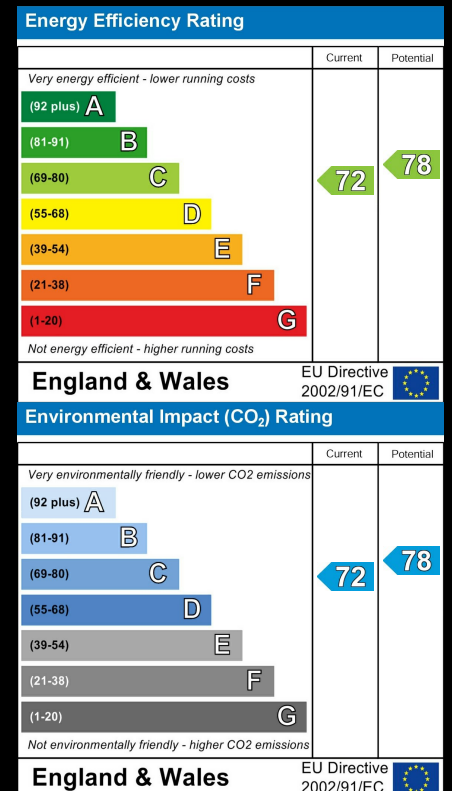


## Area Map



Please contact our sales team at [sales@citizenhousing.org.uk](mailto:sales@citizenhousing.org.uk) if you wish to arrange a viewing for this property or if you require further information.

## Energy Efficiency Graph



These particulars, whilst believed to be accurate are set out as a general outline only for guidance and do not constitute any part of an offer or contract. Intending purchasers should not rely on them as statements of representation of fact, but must satisfy themselves by inspection or otherwise as to their accuracy. No person in this firm's employment has the authority to make or give any representation or warranty in respect of the property.

4040 Lakeside, Solihull, West Midlands, B37 7YN

Email: [sales@citizenhousing.org.uk](mailto:sales@citizenhousing.org.uk) or visit [www.citizenhousing.org.uk](http://www.citizenhousing.org.uk)