



CITIZEN

Shared Ownership Resale Properties in Rugby



Please contact our Sales team on Sales@citizenhousing.org.uk if you wish to arrange a viewing or require further information on any of our resale properties.

4040 Lakeside, Solihull, West Midlands, B37 7YN

Email: sales@citizenhousing.org.uk or visit www.citizenhousing.org.uk



CITIZEN



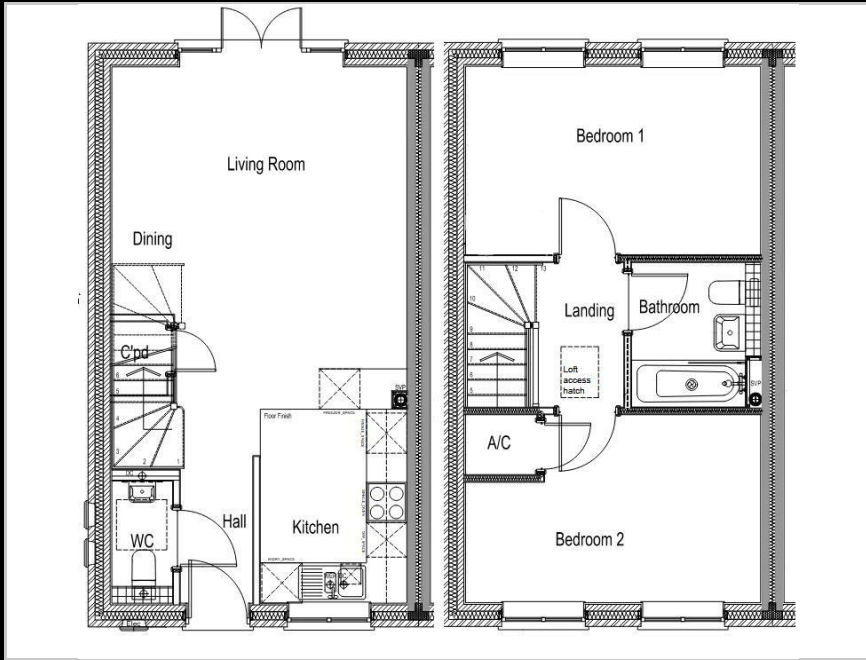
6 Gill Crescent - 40% Share

Houlton, Rugby, Warwickshire, CV23 1AP

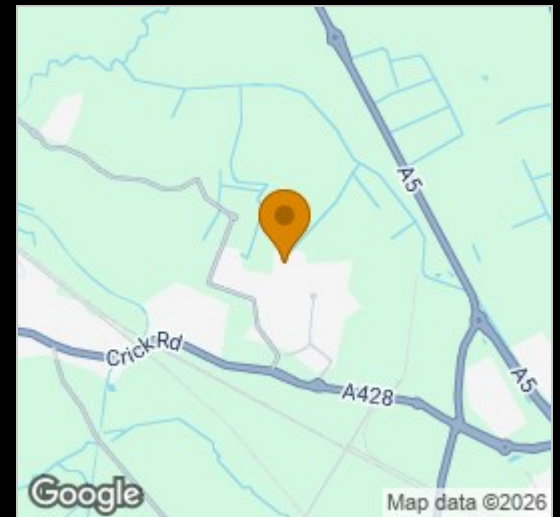
40% Shared ownership £110,000



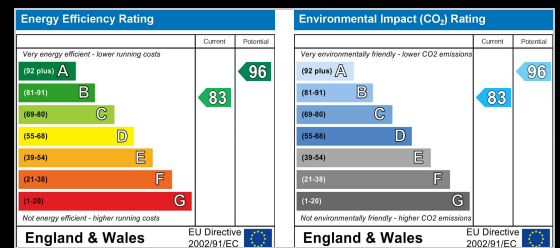
Floor Plan



Area Map



Energy Efficiency Graph



Please contact sales@citizenhousing.org.uk if you wish to arrange a viewing for this property or if you require further information.

- 40% Shared Ownership
- Semi-Detached House
- Open Plan Living
- Modern Kitchen
- Lounge
- Downstairs WC
- Two good-sized Bedrooms
- Well-appointed Bathroom
- Driveway for two vehicles
- Private Rear Garden

This lovely two-bedroom semi-detached house is now available in Houlton, Rugby through Shared Ownership.

The property comprises of an entrance hallway with the downstairs WC and access to the first floor on the left as you walk in. Open plan living space with a modern kitchen and living room with double door access to the private garden.

Upstairs you'll find a well-appointed bathroom and two good-sized bedrooms. This property benefits from off-street parking for two vehicles and a private rear garden.

Monthly Rent - £413.62

Monthly Service Charge - £18.38

Total monthly charge of £432.00 is payable to Citizen Housing who will act as the landlord for the remaining 60%.

This property has the opportunity to staircase ownership and purchase the 100% share, please contact Citizen Housing for more information.

4040 Lakeside, Solihull, West Midlands, B37 7YN

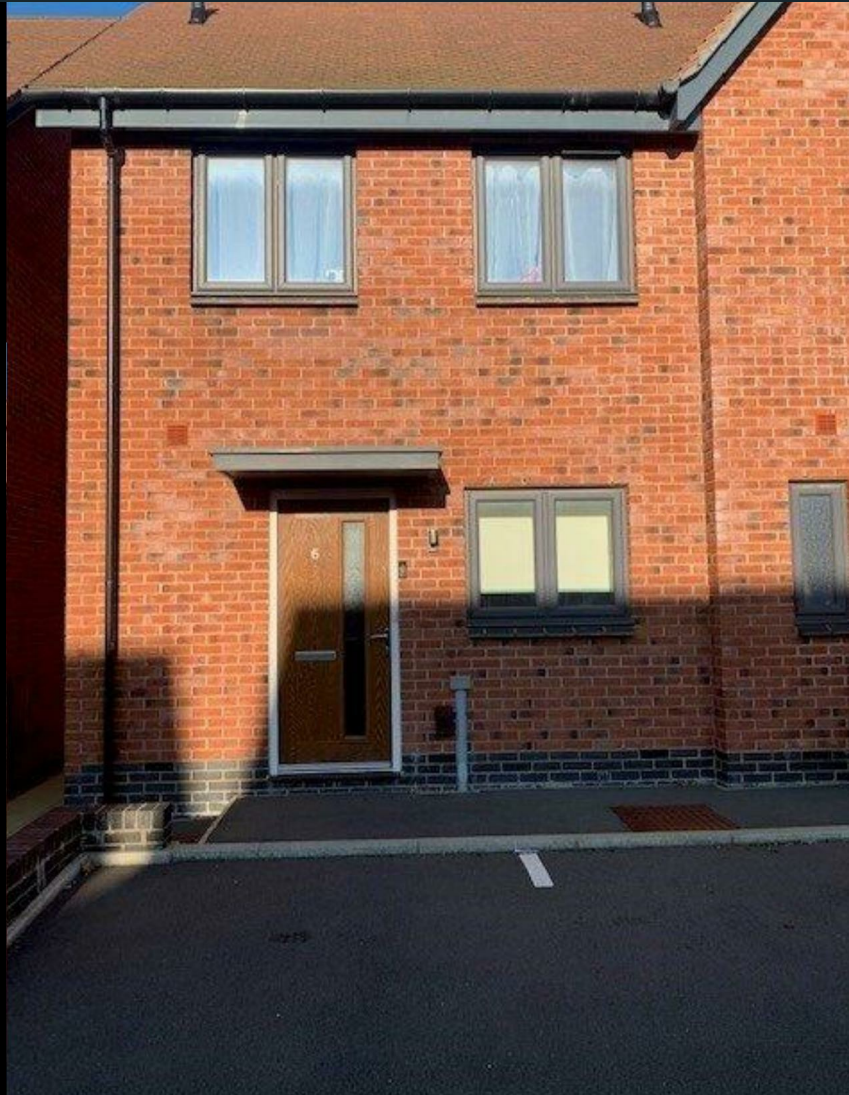
Email: sales@citizenhousing.org.uk or visit www.citizenhousing.org.uk



These particulars, whilst believed to be accurate are set out as a general outline only for guidance and do not constitute any part of an offer or contract. Intending purchasers should not rely on them as statements of representation of fact, but must satisfy themselves by inspection or otherwise as to their accuracy. No person in this firm's employment has the authority to make or give any representation or warranty in respect of the property.



CITIZEN



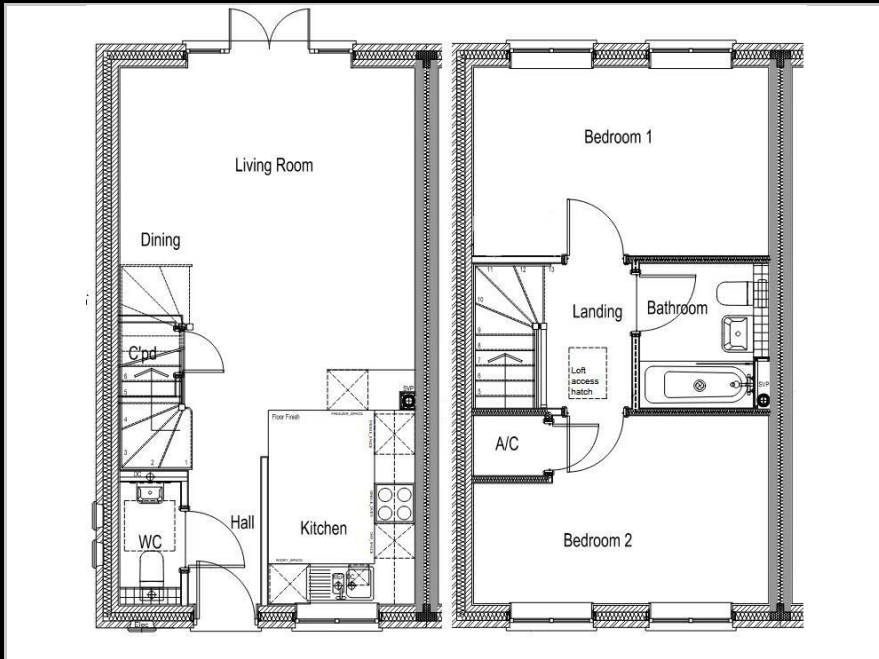
6 Gill Crescent

Houlton, Rugby, Warwickshire, CV23 1AP

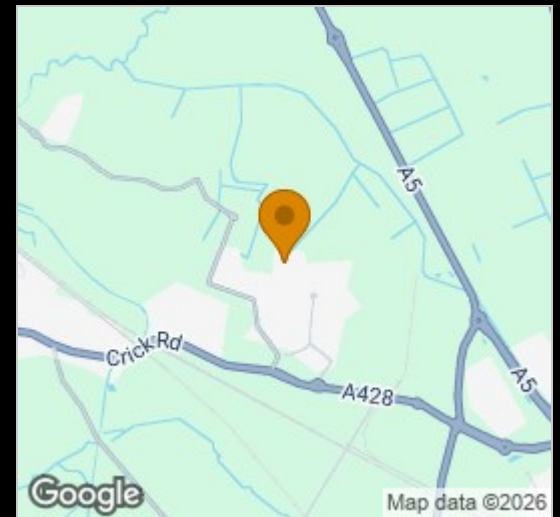
Price **£275,000**



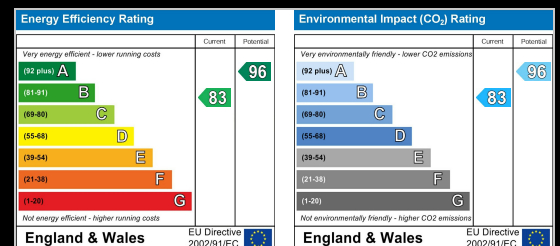
Floor Plan



Area Map



Energy Efficiency Graph



Please contact sales@citizenhousing.org.uk if you wish to arrange a viewing for this property or if you require further information.

- Houlton, Rugby
- Open Plan Living
- Lounge
- Two good-sized Bedrooms
- Driveway for two vehicles
- Semi-Detached House
- Modern Kitchen
- Downstairs WC
- Well-appointed Bathroom
- Private Rear Garden

This lovely two-bedroom semi-detached house is now available in Houlton, Rugby through Shared Ownership.

There is a non-refundable fee of £350.00 to purchase this property.

The property comprises of an entrance hallway with the downstairs WC and access to the first floor on the left as you walk in. Open plan living space with a modern kitchen and living room with double door access to the private garden.

Upstairs you'll find a well-appointed bathroom and two good-sized bedrooms. This property benefits from off-street parking for two vehicles and a private rear garden.



These particulars, whilst believed to be accurate are set out as a general outline only for guidance and do not constitute any part of an offer or contract. Intending purchasers should not rely on them as statements of representation of fact, but must satisfy themselves by inspection or otherwise as to their accuracy. No person in this firm's employment has the authority to make or give any representation or warranty in respect of the property.

4040 Lakeside, Solihull, West Midlands, B37 7YN

Email: sales@citizenhousing.org.uk or visit www.citizenhousing.org.uk