



CITIZEN



## 16 Romney Way - 35% Share

Kingstone, Hereford, HR2 9TN

**35% Shared ownership £91,000**



# 16 Romney Way - 35% Share



This lovely three-bedroom semi-detached house is now available in Kingstone, Hereford through Shared Ownership.

The property boasts a cozy entrance hall, leading onto a downstairs WC and storage cupboard on the right as you walk in and the modern kitchen and dining room on the left. To the back of the house is the separate lounge that leads to the garden.

Upstairs you'll find a well-appointed bathroom and three good sized bedrooms, with the main bedroom having a ensuite shower room. This property benefits from a driveway to the side and a lovely rear garden.

Monthly Rent - £426.71  
Monthly Service Charge - £43.63

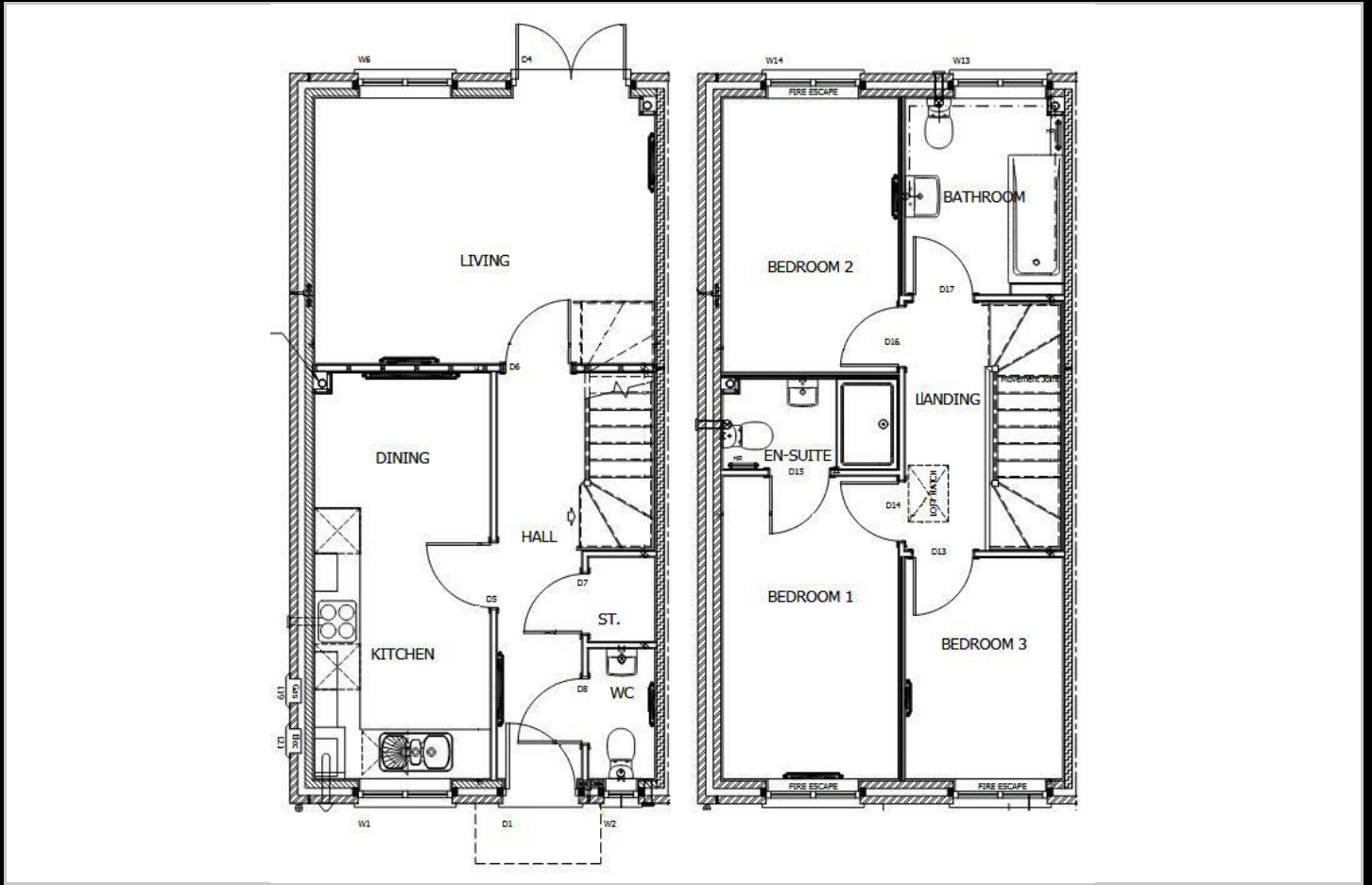
Total monthly charge of £470.34 is payable to Citizen Housing who will act as the landlord for the remaining 65%.

- 35% Shared Ownership
- Semi-Detached House Property
- Modern Kitchen Diner
- Downstairs WC
- Separate Lounge
- Three Bedrooms
- Main Bedroom with Ensuite
- Well-appointed Bathroom
- Driveway
- Lovely Rear Garden





## Floor Plan

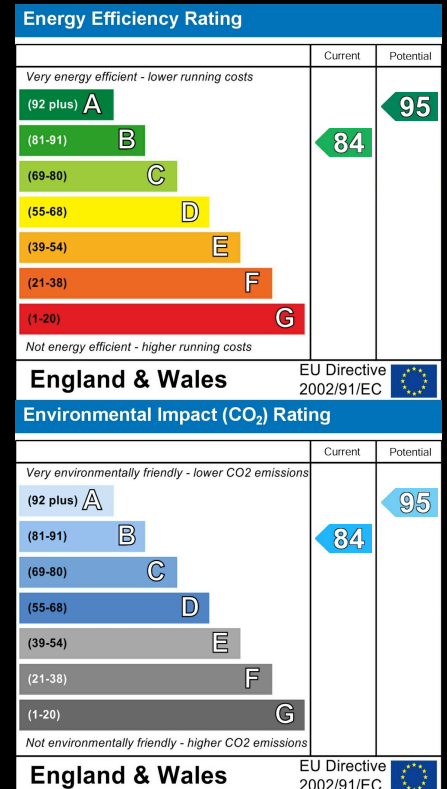


## Area Map



Please contact our sales team at [sales@citizenhousing.org.uk](mailto:sales@citizenhousing.org.uk) if you wish to arrange a viewing for this property or if you require further information.

## Energy Efficiency Graph



These particulars, whilst believed to be accurate are set out as a general outline only for guidance and do not constitute any part of an offer or contract. Intending purchasers should not rely on them as statements of representation of fact, but must satisfy themselves by inspection or otherwise as to their accuracy. No person in this firm's employment has the authority to make or give any representation or warranty in respect of the property.

4040 Lakeside, Solihull, West Midlands, B37 7YN

Email: [sales@citizenhousing.org.uk](mailto:sales@citizenhousing.org.uk) or visit [www.citizenhousing.org.uk](http://www.citizenhousing.org.uk)



CITIZEN



## 16 Romney Way

Kingstone, Hereford, HR2 9TN

**Price £260,000**



# 16 Romney Way



This lovely three-bedroom semi-detached house is now available in Kingstone, Hereford.

The property boasts a cozy entrance hall, leading onto a downstairs WC and storage cupboard on the right as you walk in and the modern kitchen and dining room on the left. To the back of the house is the separate lounge that leads to the garden.

Upstairs you'll find a well-appointed bathroom and three good sized bedrooms, with the main bedroom having a ensuite shower room. This property benefits from a driveway to the side and a lovely rear garden.

There is a non-refundable fee of £350.00 to purchase this property.

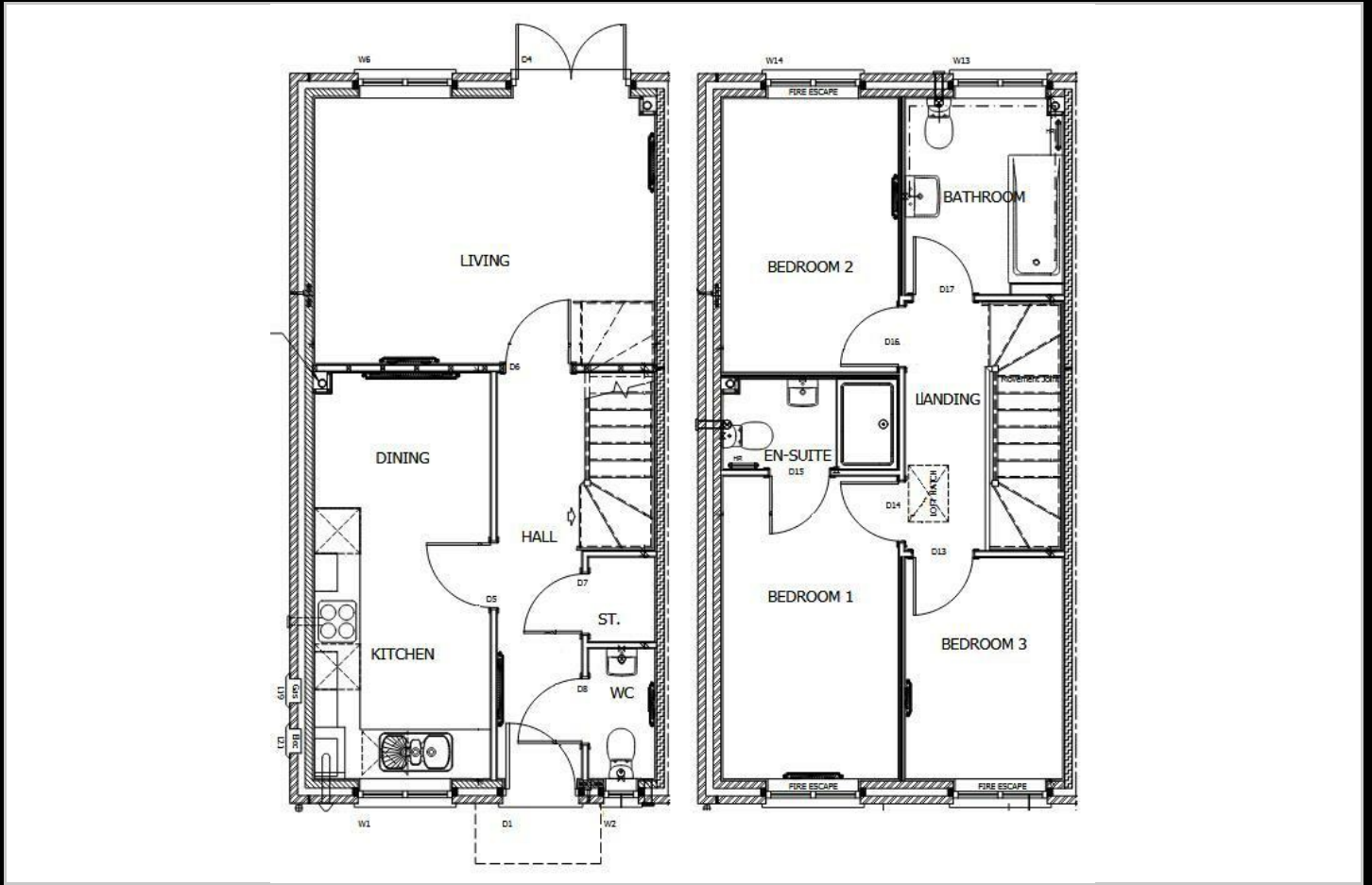
- Kingstone, Hereford
- Modern Kitchen Diner
- Separate Lounge
- Main Bedroom with Ensuite
- Driveway
- Semi-Detached House
- Downstairs WC
- Three Bedrooms
- Well-appointed Bathroom
- Lovely Rear Garden



16 Romney Way



## Floor Plan

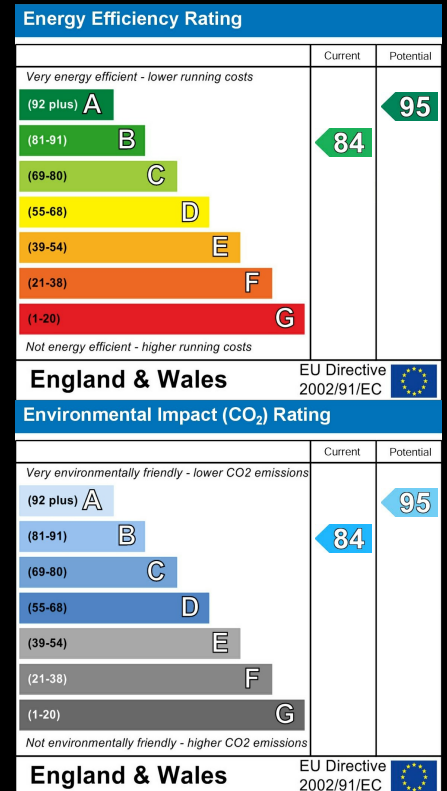


## Area Map



Please contact our sales team at [sales@citizenhousing.org.uk](mailto:sales@citizenhousing.org.uk) if you wish to arrange a viewing for this property or if you require further information.

## Energy Efficiency Graph



These particulars, whilst believed to be accurate are set out as a general outline only for guidance and do not constitute any part of an offer or contract. Intending purchasers should not rely on them as statements of representation of fact, but must satisfy themselves by inspection or otherwise as to their accuracy. No person in this firm's employment has the authority to make or give any representation or warranty in respect of the property.

4040 Lakeside, Solihull, West Midlands, B37 7YN

Email: [sales@citizenhousing.org.uk](mailto:sales@citizenhousing.org.uk) or visit [www.citizenhousing.org.uk](http://www.citizenhousing.org.uk)



CITIZEN



3 Ryeland Lane - 65% Share

Kingstone, Hereford, HR2 9TS

65% Shared Ownership - £175,500



# 3 Ryeland Lane - 65% Share



This lovely three-bedroom semi-detached house is now available in Kingstone, Herefordshire through Shared Ownership.

The property comprises of an entrance hallway with a downstairs WC and cloakroom on your right as you walk in and the modern kitchen dining room on the left. The separate living room is to the back of the house with double door access to the private garden.

Upstairs you'll find a well-appointed bathroom and three good sized bedrooms with the main bedroom having an ensuite shower room. This property benefits from off-street parking and a private rear garden.

Monthly Rent - £229.78  
Monthly Service Charge - £44.69

Total monthly charge of £274.47 is payable to Citizen Housing who will act as the landlord for the remaining 35%.

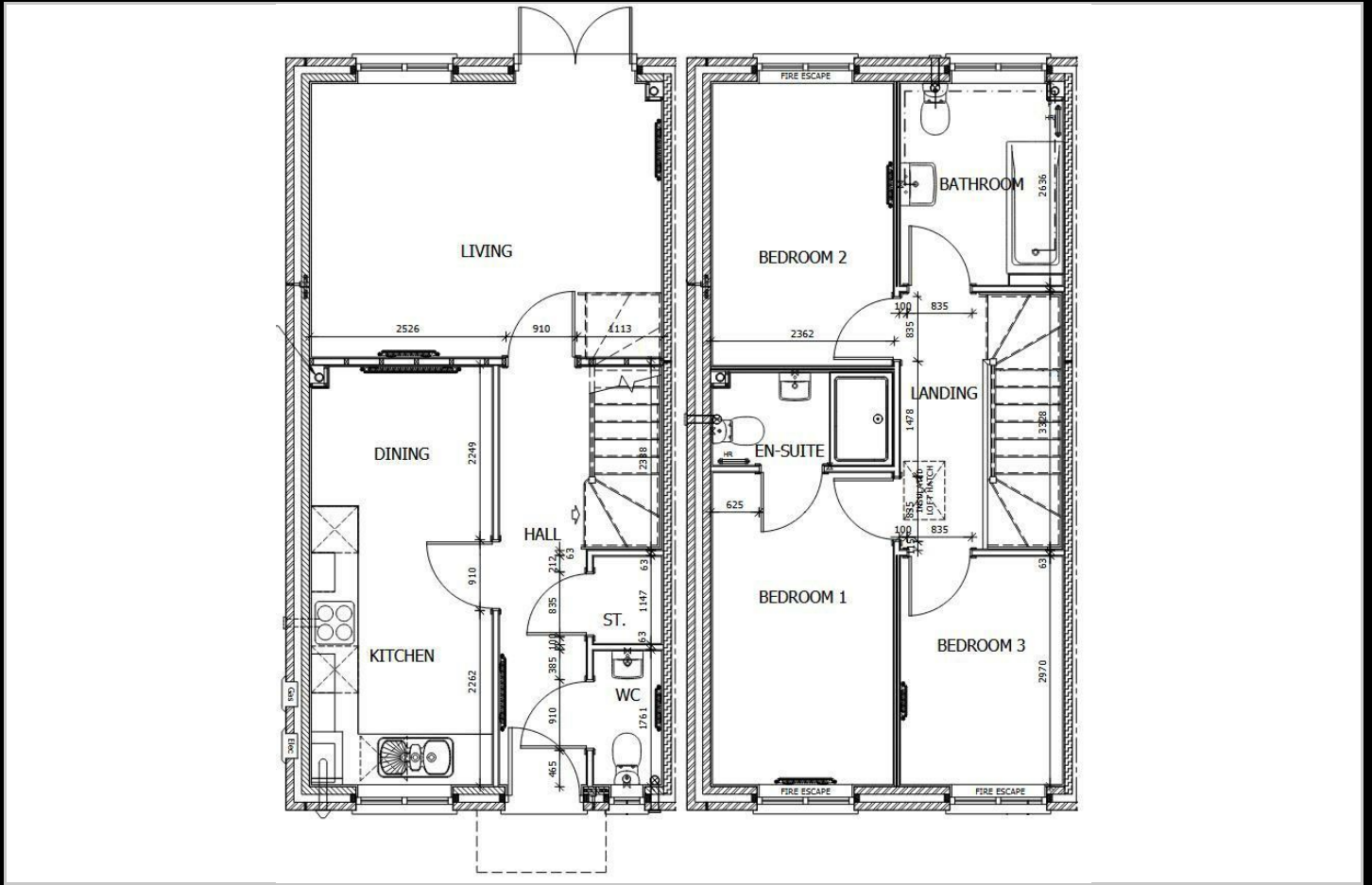
- 65% Shared Ownership
- Semi Detached House
- Modern Kitchen Diner
- Separate Lounge
- Downstairs WC
- Three good-sized Bedrooms
- Main Bedroom has Ensuite
- Well-appointed Bathroom
- Driveway to the side
- Private Rear Garden



# 3 Ryeland Lane - 65% Share



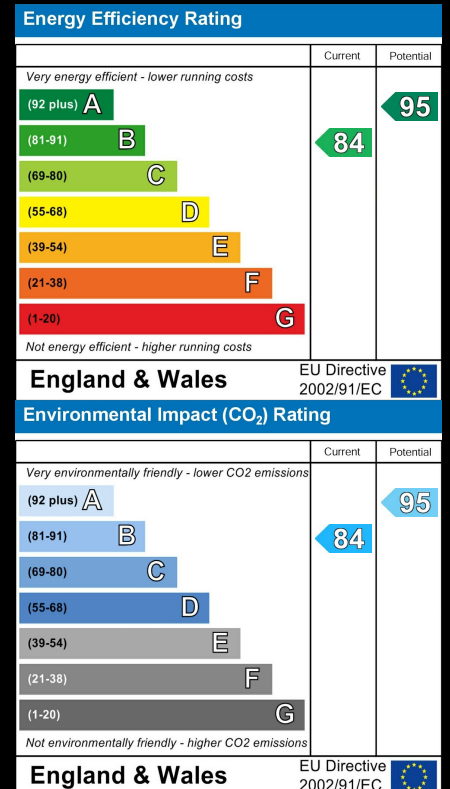
## Floor Plan



## Area Map



## Energy Efficiency Graph



Please contact our sales team at [sales@citizenhousing.org.uk](mailto:sales@citizenhousing.org.uk) if you wish to arrange a viewing for this property or if you require further information.

These particulars, whilst believed to be accurate are set out as a general outline only for guidance and do not constitute any part of an offer or contract. Intending purchasers should not rely on them as statements of representation of fact, but must satisfy themselves by inspection or otherwise as to their accuracy. No person in this firm's employment has the authority to make or give any representation or warranty in respect of the property.

4040 Lakeside, Solihull, West Midlands, B37 7YN

Email: [sales@citizenhousing.org.uk](mailto:sales@citizenhousing.org.uk) or visit [www.citizenhousing.org.uk](http://www.citizenhousing.org.uk)



## 3 Ryeland Lane

Kingstone, Hereford, HR2 9TS

**Price £270,000**



# 3 Ryeland Lane



This lovely three-bedroom semi-detached house is now available in Kingstone, Herefordshire.

There is a non-refundable fee of £350.00 to purchase this property.

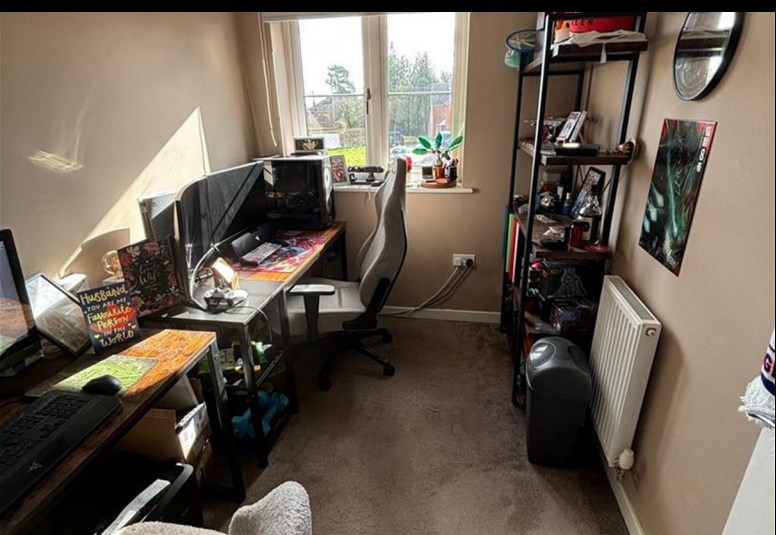
The property comprises of an entrance hallway with a downstairs WC and cloakroom on your right as you walk in and the modern kitchen dining room on the left. The separate living room is to the back of the house with double door access to the private garden.

Upstairs you'll find a well-appointed bathroom and three good sized bedrooms with the main bedroom having an ensuite shower room. This property benefits from off-street parking and a private rear garden.

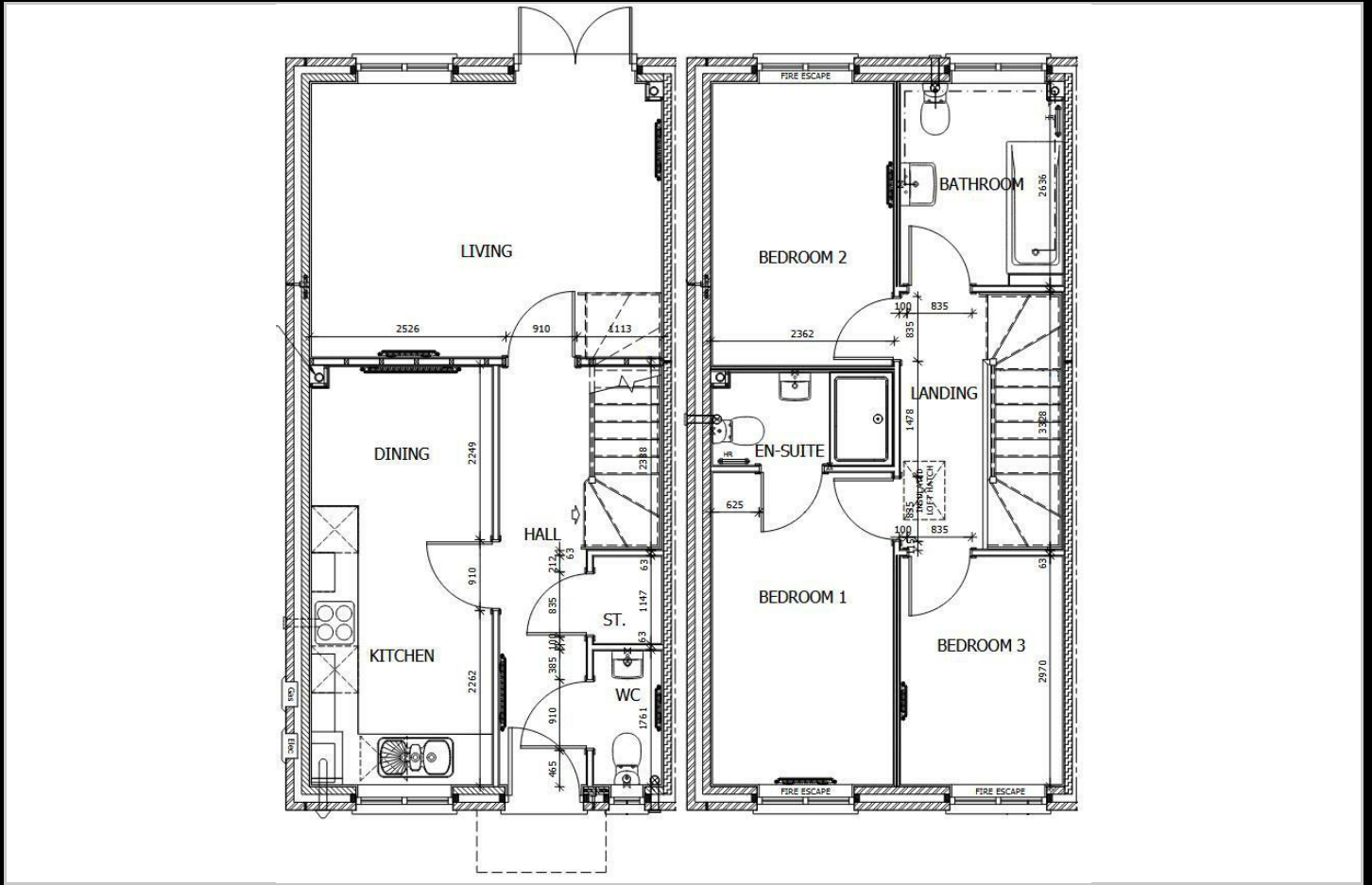
- Kingstone, Herefordshire
- Modern Kitchen Diner
- Downstairs WC
- Main Bedroom has Ensuite
- Driveway to the side
- Semi Detached House
- Separate Lounge
- Three good-sized Bedrooms
- Well-appointed Bathroom
- Private Rear Garden



# 3 Ryeland Lane



## Floor Plan

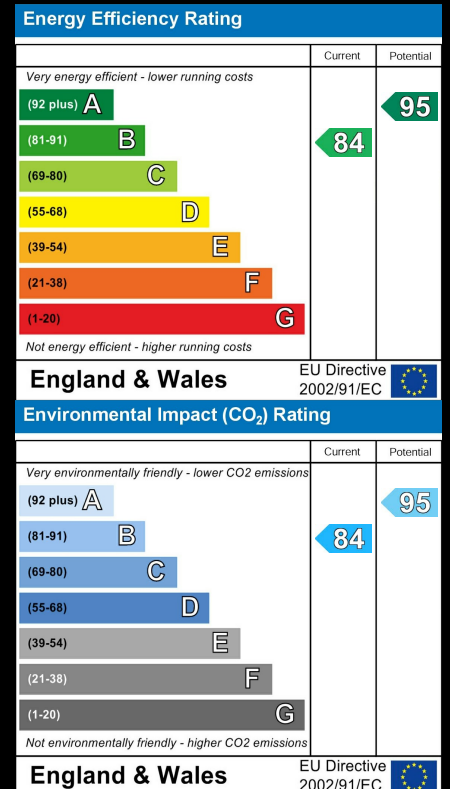


## Area Map



Please contact our sales team at [sales@citizenhousing.org.uk](mailto:sales@citizenhousing.org.uk) if you wish to arrange a viewing for this property or if you require further information.

## Energy Efficiency Graph



These particulars, whilst believed to be accurate are set out as a general outline only for guidance and do not constitute any part of an offer or contract. Intending purchasers should not rely on them as statements of representation of fact, but must satisfy themselves by inspection or otherwise as to their accuracy. No person in this firm's employment has the authority to make or give any representation or warranty in respect of the property.

4040 Lakeside, Solihull, West Midlands, B37 7YN

Email: [sales@citizenhousing.org.uk](mailto:sales@citizenhousing.org.uk) or visit [www.citizenhousing.org.uk](http://www.citizenhousing.org.uk)