



## 7 Oldbury Close - 50% Share

Cawston, Rugby, CV22 7ZB

**50% Shared Ownership £120,000**



2



1



1



B



## 7 Oldbury Close - 50% Share



This charming two-bedroom semi-detached house boasts a cosy entrance hallway that leads to the first floor and to the lounge on the right. Towards the back of the house you will find the downstairs WC and storage cupboard, before reaching the spacious kitchen diner that has access to the garden.

Upstairs you'll find a well-appointed family bathroom and two good-sized bedrooms. This property benefits from a driveway for two vehicles and a lovely rear garden.

Shared Ownership Semi-Detached house available for a 50% share for £120,000 (full market value £240,000).

Total monthly rent and service charge £330.72 payable to Citizen Housing who will act as the landlord for the remaining 50%.

- Peaceful Area
- Semi-Detached House
- Separate Lounge
- Two good-sized Bedrooms
- Driveway for two vehicles
- Cawston, Rugby
- Kitchen Diner
- Downstairs WC
- Well-appointed Bathroom
- Lovely Rear Garden

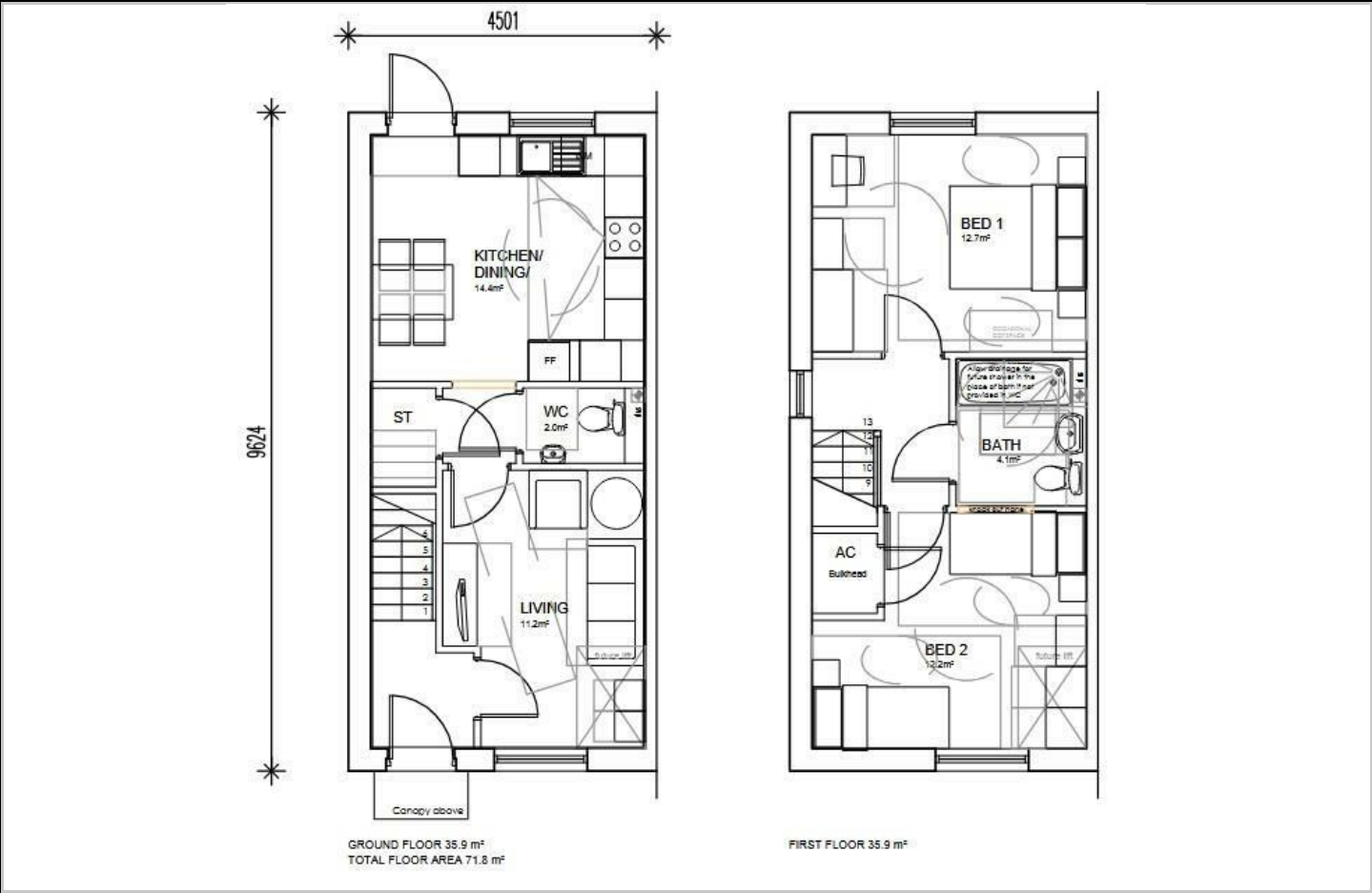




## 7 Oldbury Close - 50% Share



Floor Plan

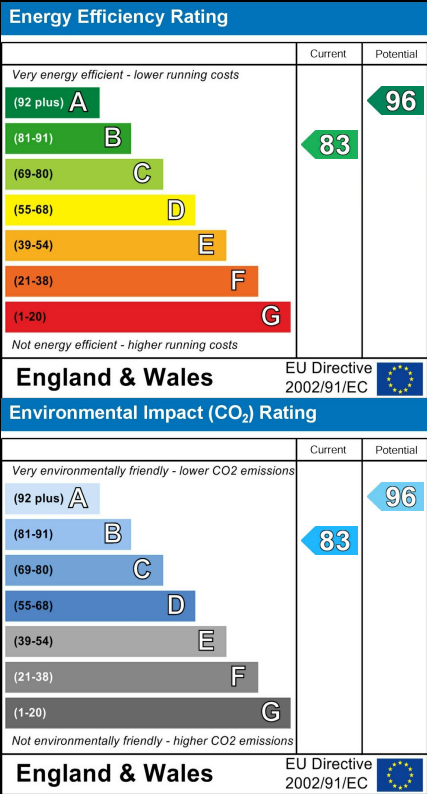


Area Map



Please contact our sales team at [sales@citizenhousing.org.uk](mailto:sales@citizenhousing.org.uk) if you wish to arrange a viewing for this property or if you require further information.

Energy Efficiency Graph



These particulars, whilst believed to be accurate are set out as a general outline only for guidance and do not constitute any part of an offer or contract. Intending purchasers should not rely on them as statements of representation of fact, but must satisfy themselves by inspection or otherwise as to their accuracy. No person in this firms employment has the authority to make or give any representation or warranty in respect of the property.

4040 Lakeside, Solihull, West Midlands, B37 7YN  
Email: [sales@citizenhousing.org.uk](mailto:sales@citizenhousing.org.uk) or visit [www.citizenhousing.org.uk](http://www.citizenhousing.org.uk)





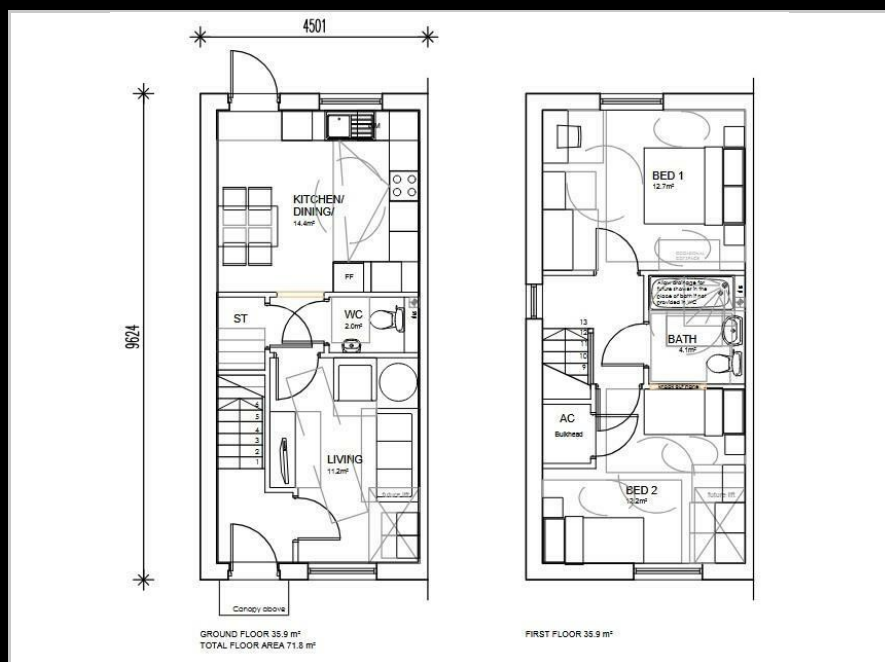
7 Oldbury Close

Cawston, Rugby, CV22 7ZB

Price £240,000



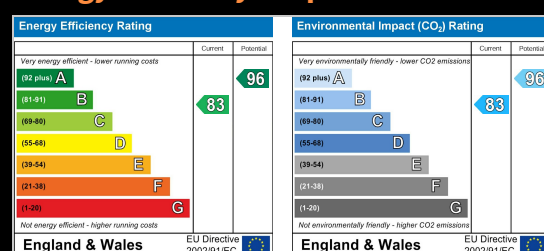
## Floor Plan



## Area Map



## Energy Efficiency Graph



Please contact our sales team at [sales@citizenhousing.org.uk](mailto:sales@citizenhousing.org.uk) if you wish to arrange a viewing for this property or if you require further

- Peaceful Area
- Semi-Detached House
- Separate Lounge
- Two good-sized Bedrooms
- Driveway for two vehicles
- Cawston, Rugby
- Kitchen Diner
- Downstairs WC
- Well-appointed Bathroom
- Lovely Rear Garden

This charming two-bedroom semi-detached house boasts a cosy entrance hallway that leads to the first floor and to the lounge on the right. Towards the back of the house you will find the downstairs WC and storage cupboard, before reaching the spacious kitchen diner that has access to the garden.

Upstairs you'll find a well-appointed family bathroom and two good-sized bedrooms. This property benefits from a driveway for two vehicles and a lovely rear garden.

There is a non-refundable fee of £350.00 to purchase this property.



These particulars, whilst believed to be accurate are set out as a general outline only for guidance and do not constitute any part of an offer or contract. Intending purchasers should not rely on them as statements of representation of fact, but must satisfy themselves by inspection or otherwise as to their accuracy. No person in this firm's employment has the authority to make or give any representation or warranty in respect of the property.

4040 Lakeside, Solihull, West Midlands, B37 7YN

Email: [sales@citizenhousing.org.uk](mailto:sales@citizenhousing.org.uk) or visit [www.citizenhousing.org.uk](http://www.citizenhousing.org.uk)