



CITIZEN



Plot 304 Malvern Rise 'Type B' - 40% share

33 Byson Place, Malvern, WR14 3RP

40% Shared ownership £106,000



Plot 304 Malvern Rise 'Type B' - 40% share



Description

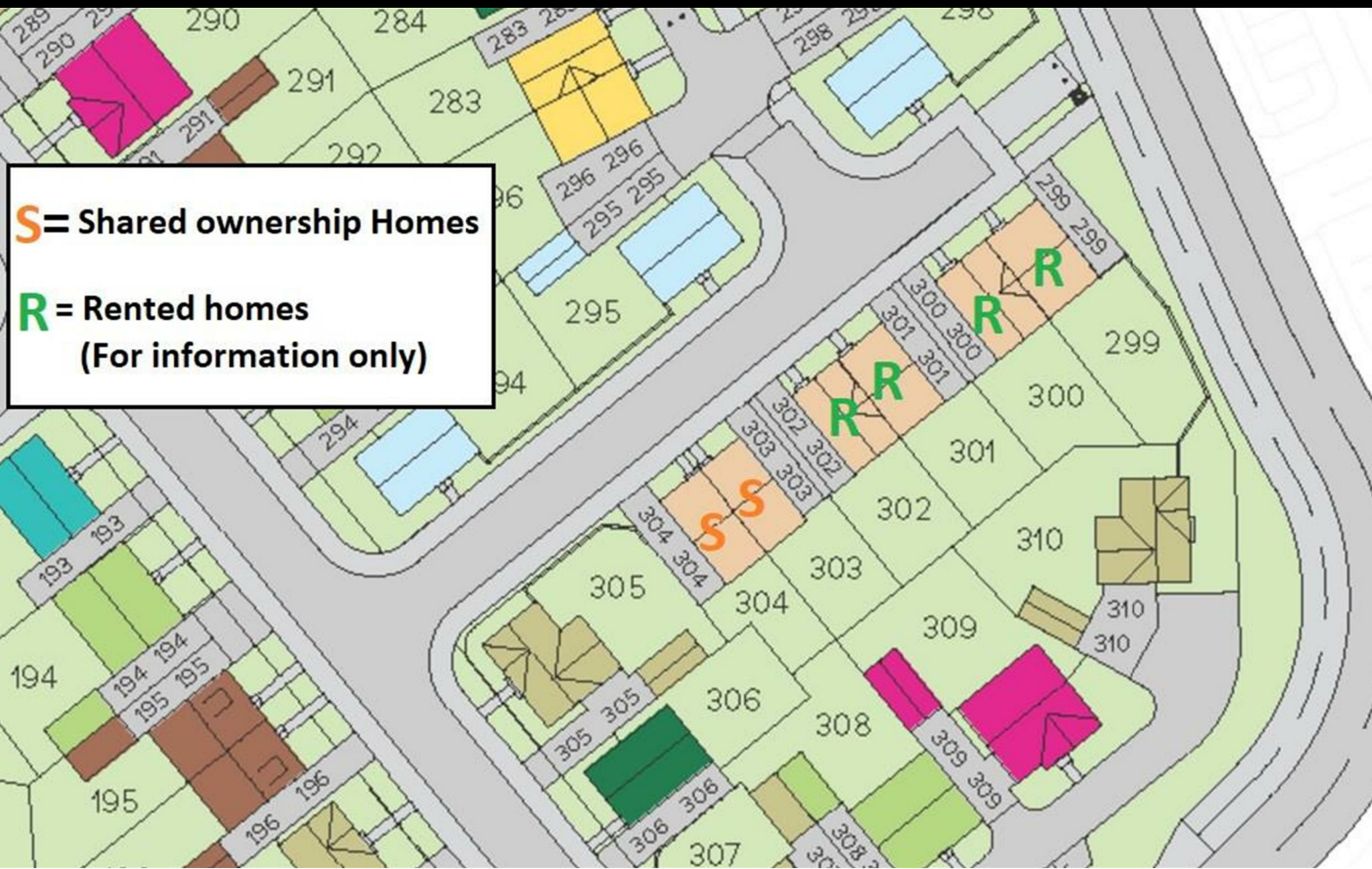
Plot 304 Malvern Rise - Purchase Price 40% share £106,000
Total Rent £398.52 pcm

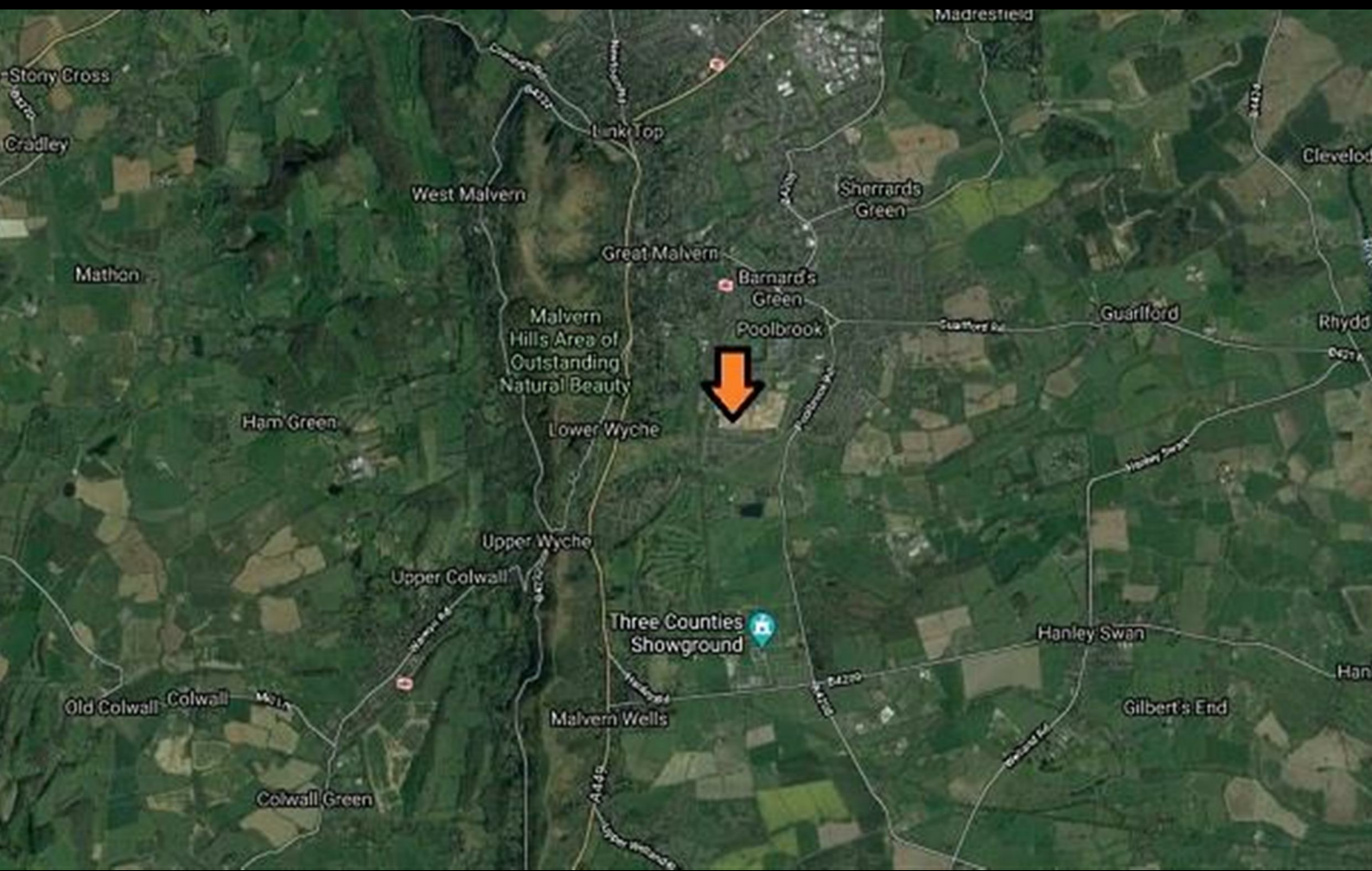
READY TO OCCUPY

If you would like to apply for this property, please complete our online application form via our Signature Website

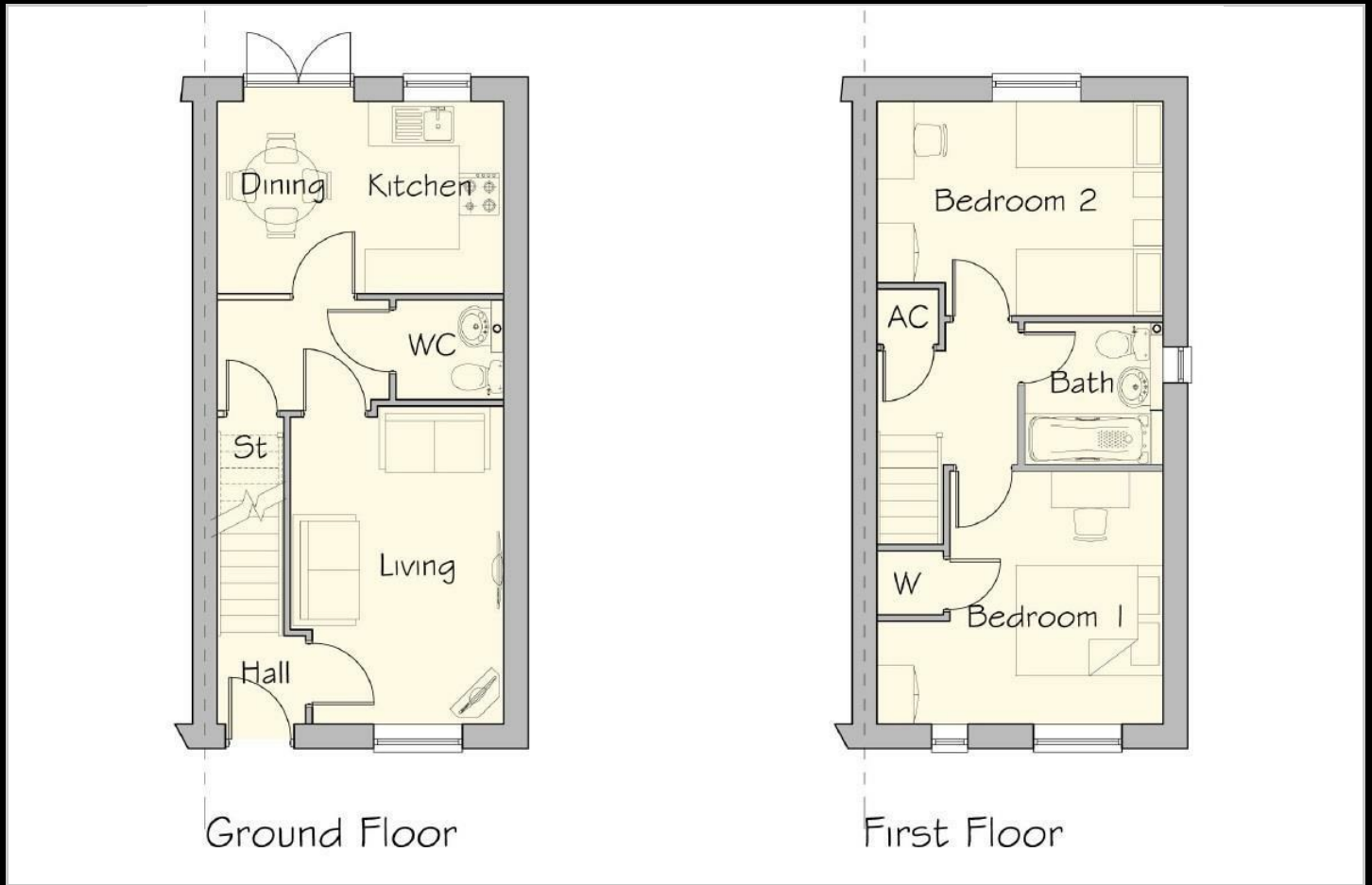
* Images are for illustration purposes only

- Semi detached
- Good transport links
- Double glazing
- 2 off road parking spaces
- Vinyl flooring to wet areas
- New build
- Turf to rear garden
- Downstairs cloakroom
- Kitchen with oven hob & extractor

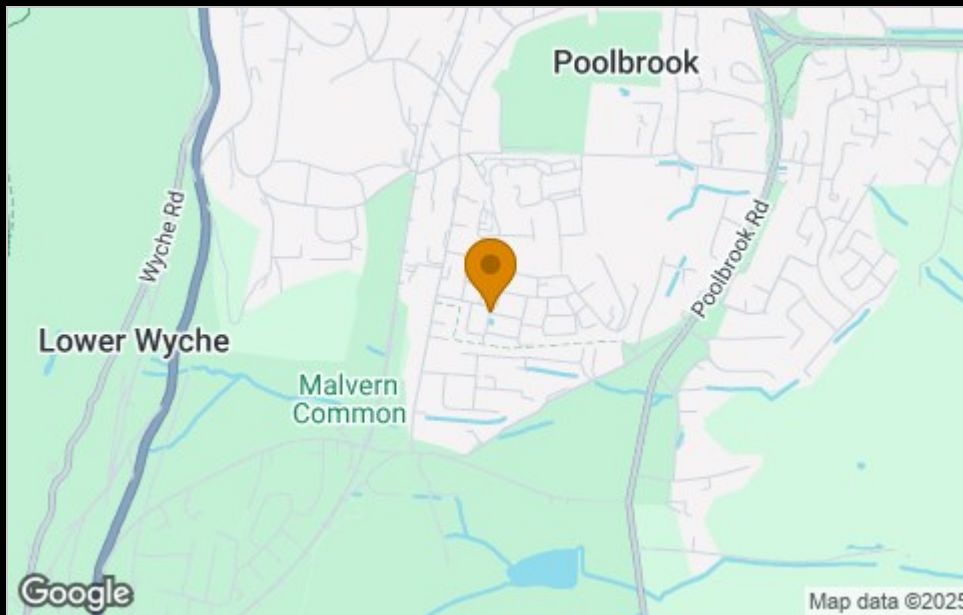




Floor Plan



Area Map



Viewing

Please contact our sales team at sales@citizenhousing.org.uk if you wish to arrange a viewing appointment for this property or require further information.

These particulars, whilst believed to be accurate are set out as a general outline only for guidance and do not constitute any part of an offer or contract. Intending purchasers should not rely on them as statements of representation of fact, but must satisfy themselves by inspection or otherwise as to their accuracy. No person in this firm's employment has the authority to make or give any representation or warranty in respect of the property.

4040 Lakeside, Solihull, West Midlands, B37 7YN

Email: sales@citizenhousing.org.uk or visit www.citizenhousing.org.uk

Energy Efficiency Graph

Energy Efficiency Rating		Current	Potential
Very energy efficient - lower running costs			
(92 plus) A			
(81-91) B			
(69-80) C			
(55-68) D			
(39-54) E			
(21-38) F			
(1-20) G			
Not energy efficient - higher running costs			
England & Wales		EU Directive 2002/91/EC	
Environmental Impact (CO ₂) Rating		Current	Potential
Very environmentally friendly - lower CO ₂ emissions			
(92 plus) A			
(81-91) B			
(69-80) C			
(55-68) D			
(39-54) E			
(21-38) F			
(1-20) G			
Not environmentally friendly - higher CO ₂ emissions			
England & Wales		EU Directive 2002/91/EC	