



CITIZEN



## Plot 12 Meadow Gardens - 40% share

12 Willow Close, Atherstone, CV9 2DY

**40% Shared ownership £94,500**



2



1



1





# Plot 12 Meadow Gardens - 40% share



## Description

Plot 12 Meadow Gardens Purchase Price £98,000 40% Share

Total Rent £370.87 pcm

If you would like to apply for this property, please complete our online application form via our Signature Website

Ready to Occupy Spring 2026 - AVAILABLE TO RESERVE NOW

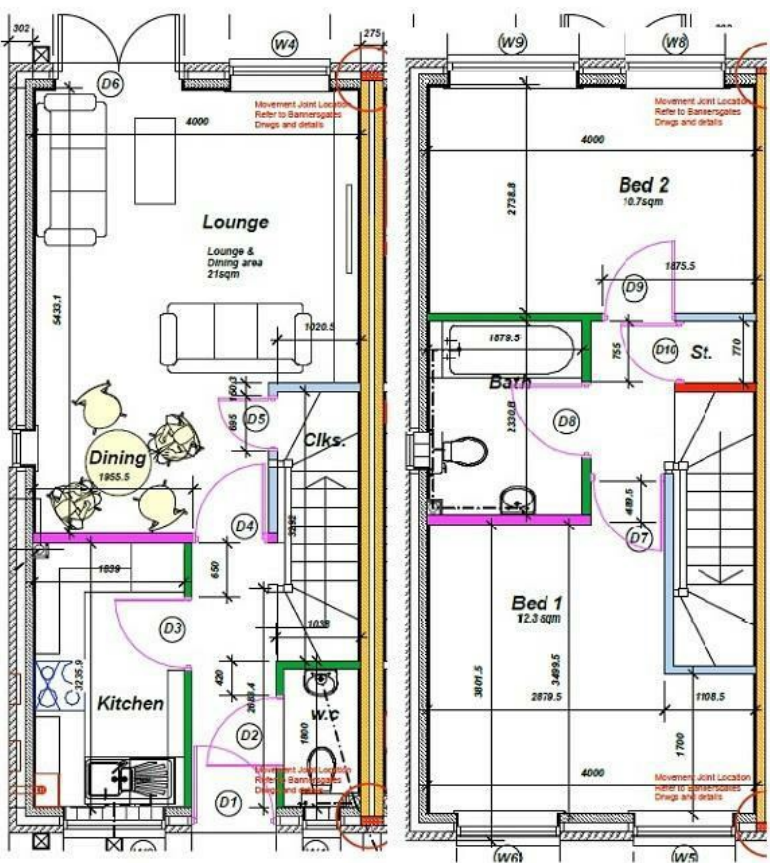
All images/photographs are for illustrative purposes only

- New Build
- 2 Parking spaces
- Fitted kitchen with oven, hob & extractor
- 2 spacious bedrooms
- uPVC windows
- Semi Detached
- Vinyl flooring to wet areas
- Turf to rear garden
- Downstairs cloakroom
- Near Atherstone





Floor Plan



Area Map



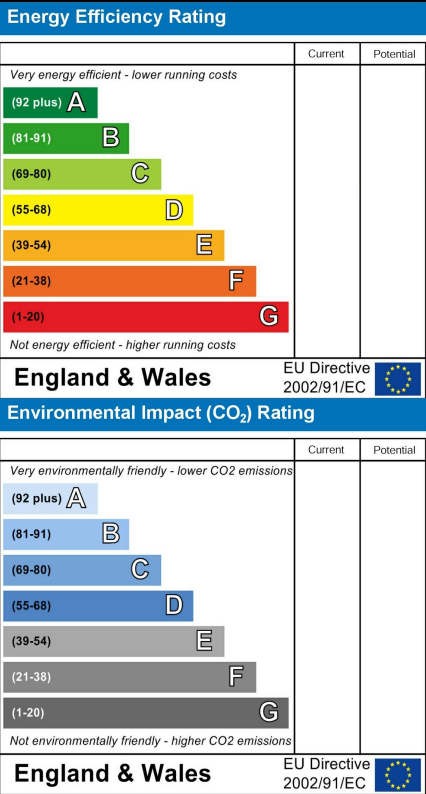
Viewing

Please contact our sales team at [sales@citizenhousing.org.uk](mailto:sales@citizenhousing.org.uk) if you wish to arrange a viewing appointment for this property or require further information.

These particulars, whilst believed to be accurate are set out as a general outline only for guidance and do not constitute any part of an offer or contract. Intending purchasers should not rely on them as statements of representation of fact, but must satisfy themselves by inspection or otherwise as to their accuracy. No person in this firms employment has the authority to make or give any representation or warranty in respect of the property.

4040 Lakeside, Solihull, West Midlands, B37 7YN  
Email: [sales@citizenhousing.org.uk](mailto:sales@citizenhousing.org.uk) or visit [www.citizenhousing.org.uk](http://www.citizenhousing.org.uk)

Energy Efficiency Graph





## Plot 14 Meadow Gardens - 40% share

14 Willow Close, Atherstone, CV9 2DY

**40% Shared ownership £98,000**





# Plot 14 Meadow Gardens - 40% share



## Description

Plot 14 Meadow Gardens Purchase Price £98,000 40% Share  
Total Rent £370.87 pcm

Ready to Occupy Spring 2026 - AVAILABLE TO RESERVE NOW

Please note there is a staircasing restriction on this home of a maximum ownership percentage of 80%

If you would like to apply for this property, please complete our online application form via our Signature Website

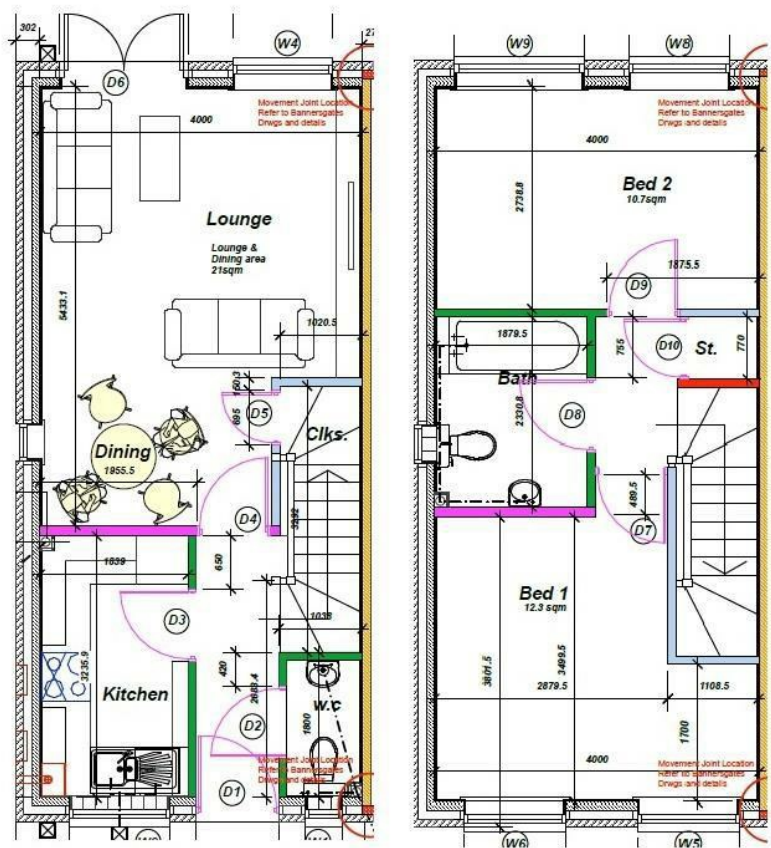
All images/photographs are for illustrative purposes only

- New Build
- 2 Parking spaces
- Fitted kitchen with oven, hob & extractor
- 2 spacious bedrooms
- uPVC windows
- Semi Detached
- Vinyl flooring to wet areas
- Turf to rear garden
- Downstairs cloakroom
- Near Atherstone





Floor Plan



Area Map



Viewing

Please contact our sales team at [sales@citizenhousing.org.uk](mailto:sales@citizenhousing.org.uk) if you wish to arrange a viewing appointment for this property or require further information.

These particulars, whilst believed to be accurate are set out as a general outline only for guidance and do not constitute any part of an offer or contract. Intending purchasers should not rely on them as statements of representation of fact, but must satisfy themselves by inspection or otherwise as to their accuracy. No person in this firms employment has the authority to make or give any representation or warranty in respect of the property.

4040 Lakeside, Solihull, West Midlands, B37 7YN  
Email: [sales@citizenhousing.org.uk](mailto:sales@citizenhousing.org.uk) or visit [www.citizenhousing.org.uk](http://www.citizenhousing.org.uk)

Energy Efficiency Graph

