



## Plot 79 Ludlow Green "AH3B" 35% Share

6 Paper Mill Drive, Ludlow, SY8 4DP

**35% Shared ownership £107,625**



3



1



1





# Plot 79 Ludlow Green "AH3B" 35% Share



## Description

Plot 79 Ludlow Green "AH3B" Purchase Price £107,625 35% Share  
Total Rent £508.63 pcm

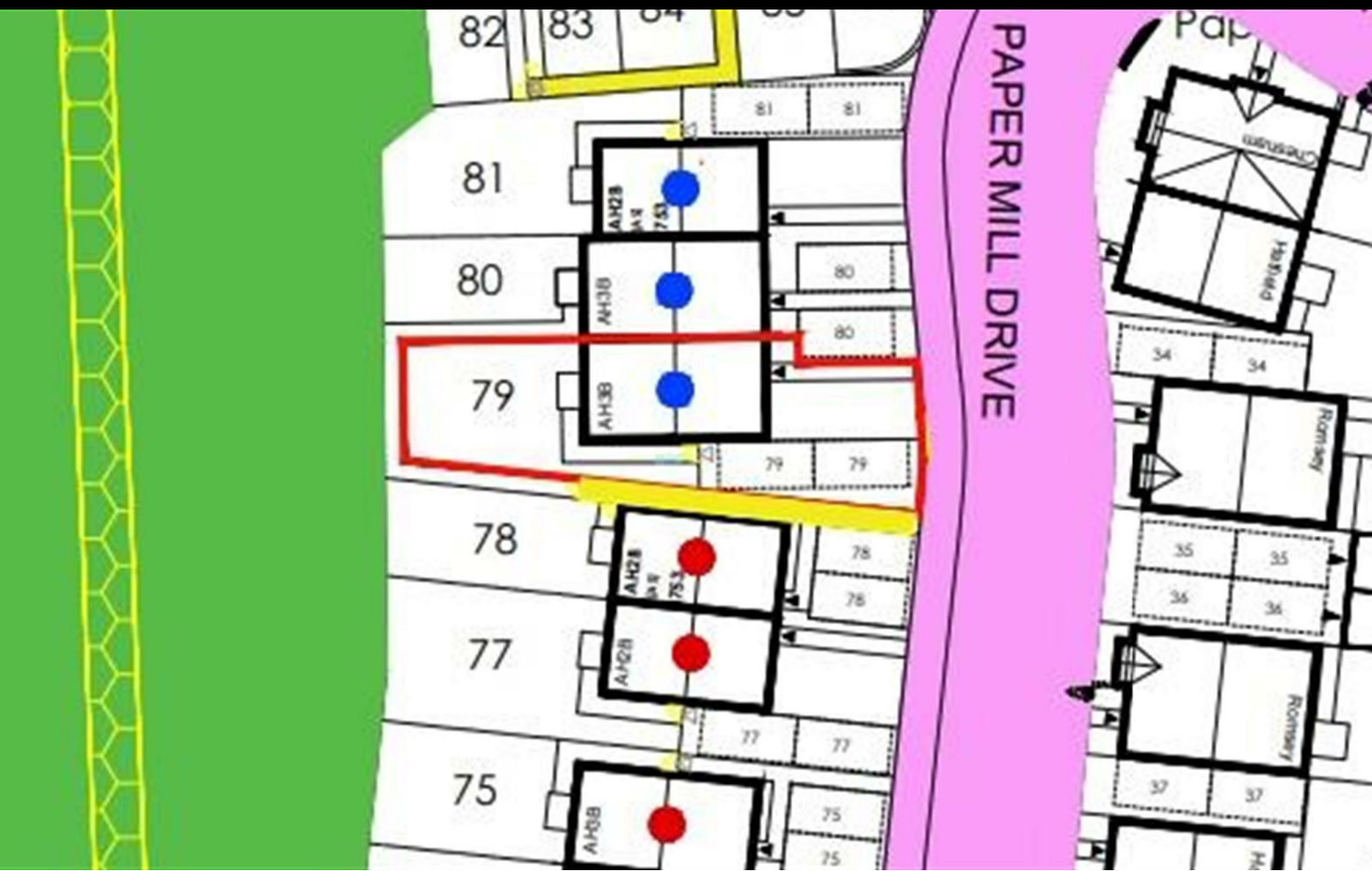
READY TO OCCUPY

If you would like to apply for this property, please complete our online application form via our Signature Website

Please note there is an 80% staircasing restriction on these homes.

\* Images are for illustration purposes only

- New build
- 3 bedrooms
- Vinyl flooring to wet areas
- Turf to rear garden
- Good transport links to Hereford
- End terrace
- Downstairs cloakroom
- Oven, hob & extractor included
- nr Ludlow





**DON'T MISS OUT, ON THESE HOT OFFERS**  
**ALL OFFERS END THE 24/12/25**



## **SHARED OWNERSHIP NEW HOMES SALE**

**Offers on selected homes**

Various offers available\*

- \* Carpets included
- \* £1,000 Amazon voucher
- \* £1,000 Legal fees

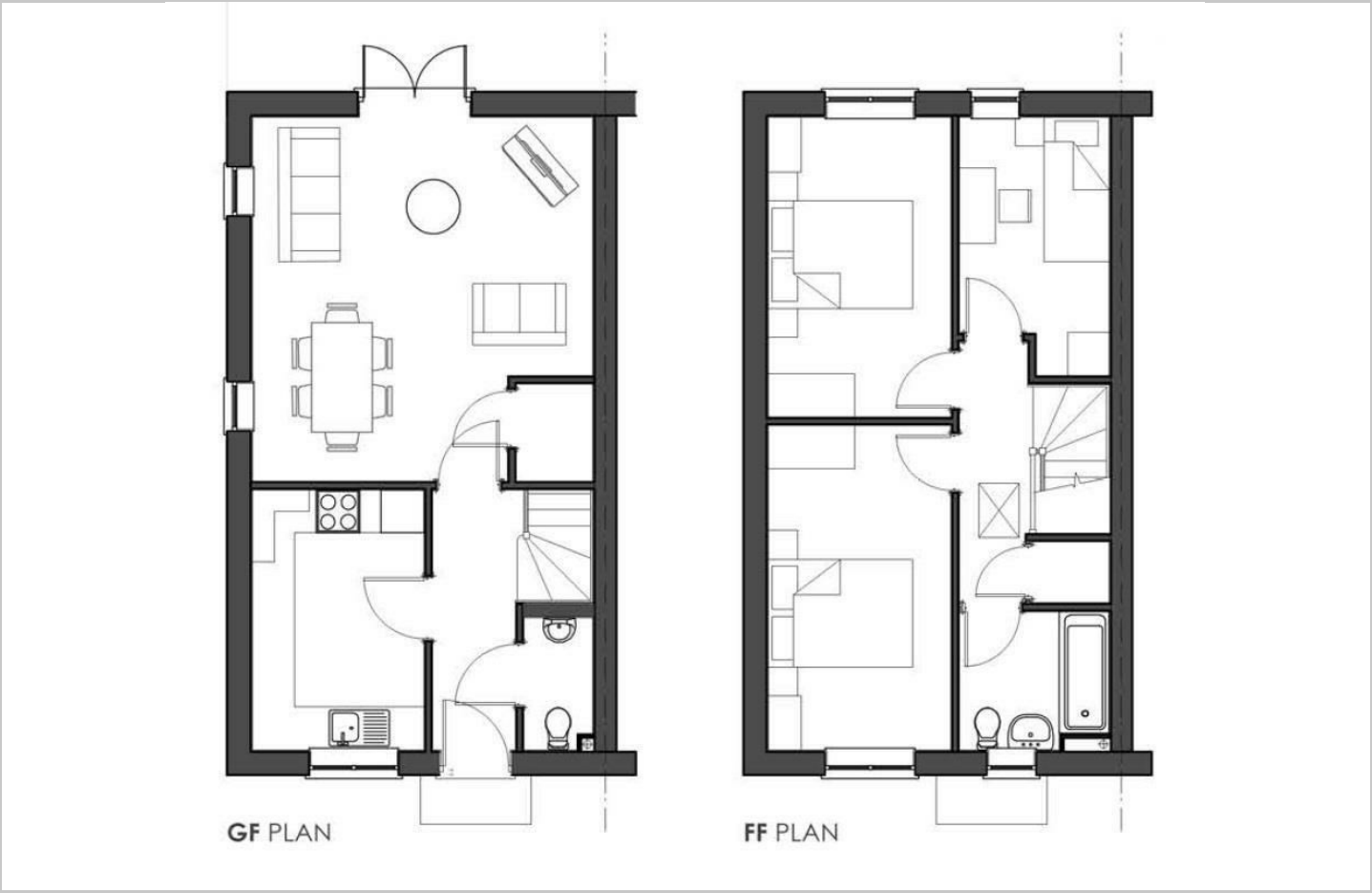
**5 %**

**DEPOSIT PAID (OF ADVERTISED SHARE)**

\* Please note, not all advertised offers are available on each property, please refer to our website [www.citizenhousing.org.uk](http://www.citizenhousing.org.uk)



Floor Plan



Area Map



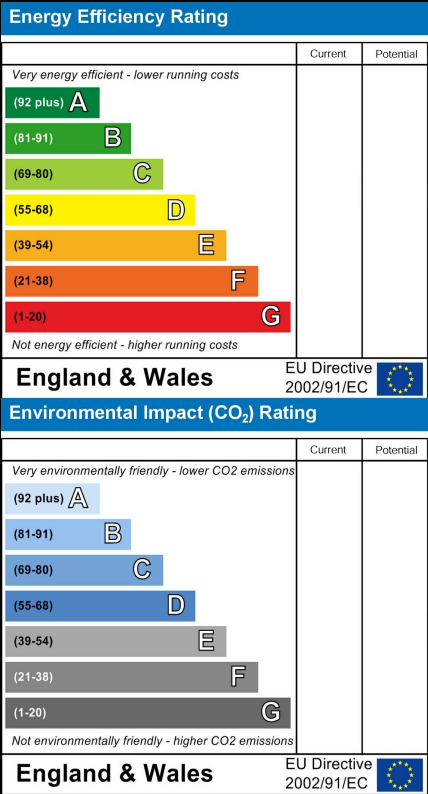
Viewing

Please contact our sales team at [sales@citizenhousing.org.uk](mailto:sales@citizenhousing.org.uk) if you wish to arrange a viewing appointment for this property or require further information.

These particulars, whilst believed to be accurate are set out as a general outline only for guidance and do not constitute any part of an offer or contract. Intending purchasers should not rely on them as statements of representation of fact, but must satisfy themselves by inspection or otherwise as to their accuracy. No person in this firms employment has the authority to make or give any representation or warranty in respect of the property.

4040 Lakeside, Solihull, West Midlands, B37 7YN  
Email: [sales@citizenhousing.org.uk](mailto:sales@citizenhousing.org.uk) or visit [www.citizenhousing.org.uk](http://www.citizenhousing.org.uk)

Energy Efficiency Graph







## Plot 85 Ludlow Green "AH2B" 40% Share

41 Corn Mill Road, Ludlow, SY8 4BL

**40% Shared ownership £106,000**



2



1



1





# Plot 85 Ludlow Green "AH2B" 40% Share



## Description

Plot 85 Ludlow Green "AH2B" Purchase Price £106,000 40% Share  
Total Rent £413.17 pcm

READY TO OCCUPY

If you would like to apply for this property, please complete our online application form via our Signature Website

Please note there is an 80% staircasing restriction on these homes.

\* Images are for illustration purposes only

- New Build
- 2 double bedrooms
- Vinyl flooring to wet areas
- Turf to rear garden
- Transport links to Hereford
- Semi Detached
- Downstairs cloakroom
- Oven, hob & extractor included
- nr Ludlow







**DON'T MISS OUT, ON THESE HOT OFFERS**  
**ALL OFFERS END THE 24/12/25**



## **SHARED OWNERSHIP NEW HOMES SALE**

**Offers on selected homes**

**Various offers available\***

- \* Carpets included**
- \* £1,000 Amazon voucher**
- \* £1,000 Legal fees**

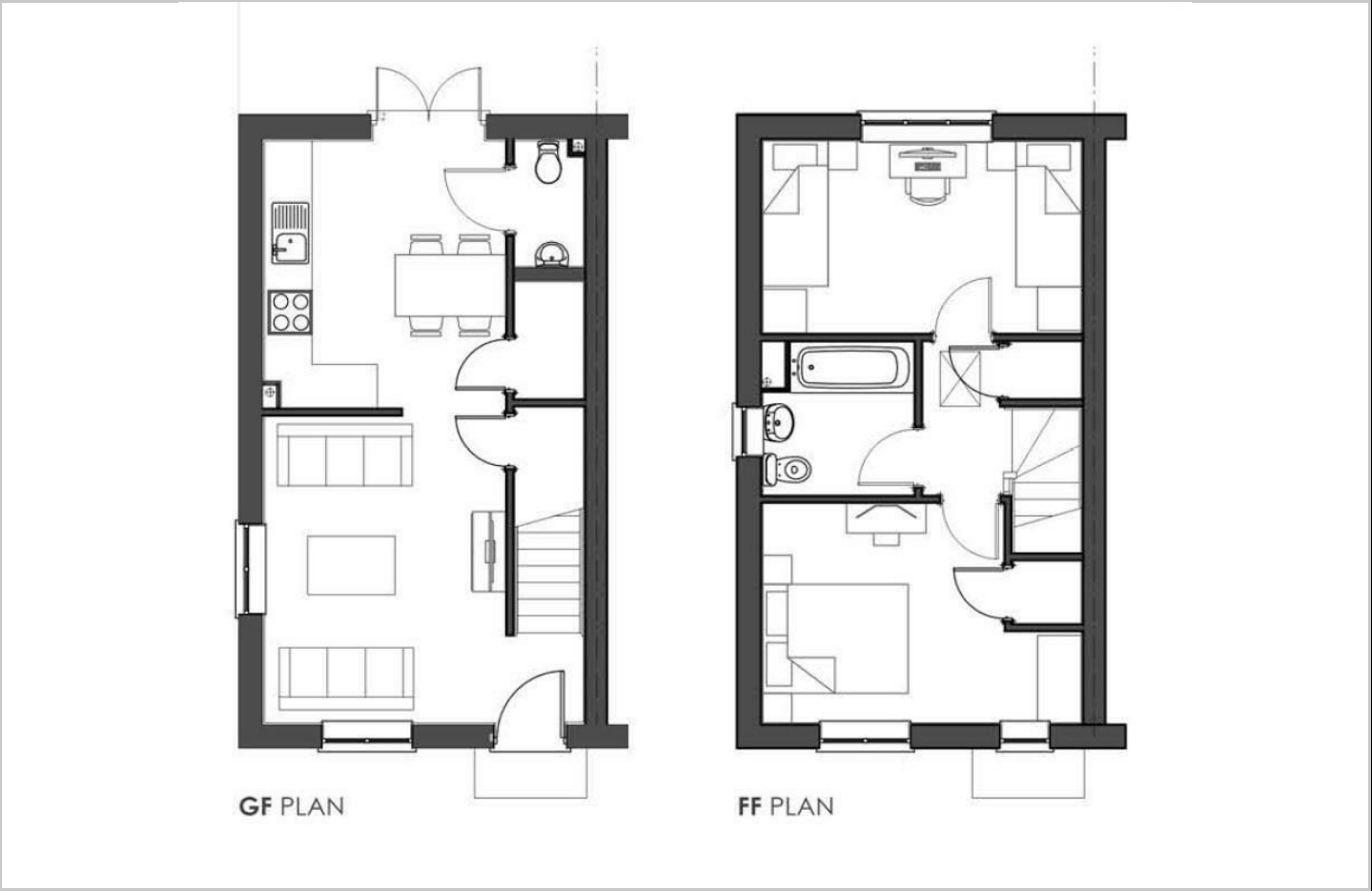
**5 %**

**DEPOSIT PAID (OF ADVERTISED SHARE)**

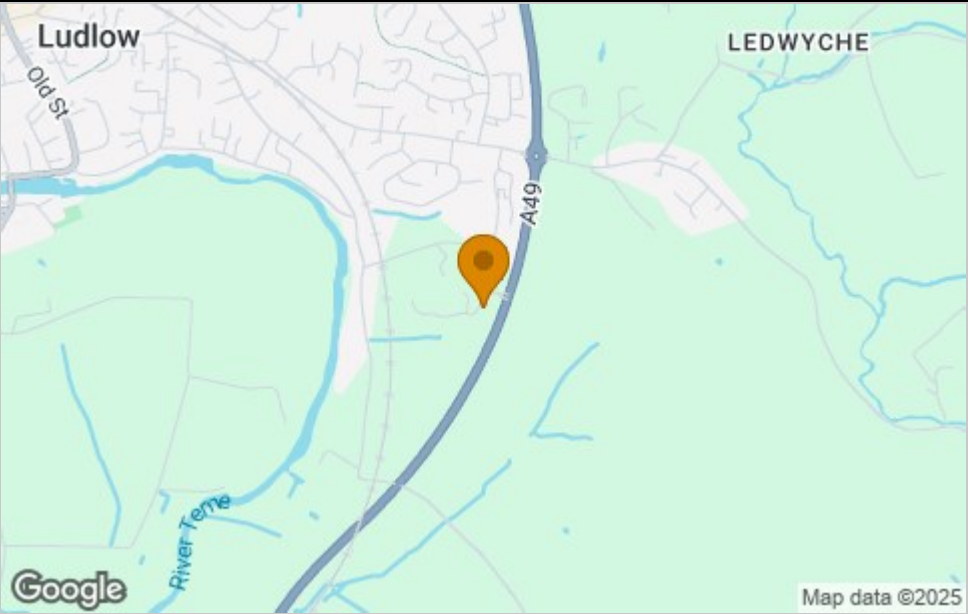
\* Please note, not all advertised offers are available on each property, please refer to our website [www.citizenhousing.org.uk](http://www.citizenhousing.org.uk)



Floor Plan



Area Map



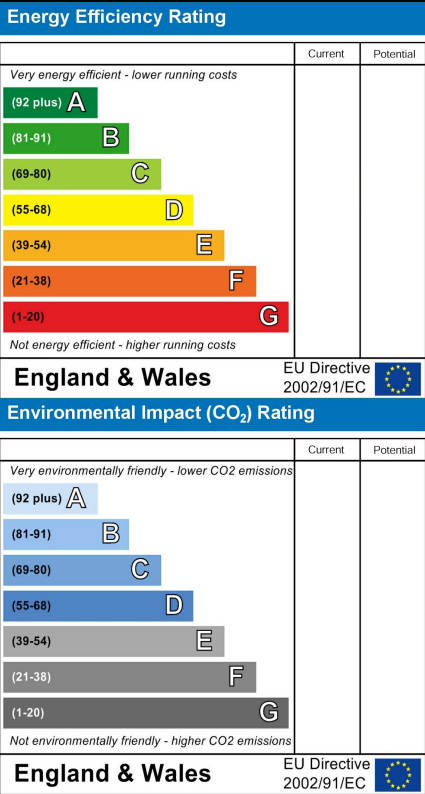
Viewing

Please contact our sales team at [sales@citizenhousing.org.uk](mailto:sales@citizenhousing.org.uk) if you wish to arrange a viewing appointment for this property or require further information.

These particulars, whilst believed to be accurate are set out as a general outline only for guidance and do not constitute any part of an offer or contract. Intending purchasers should not rely on them as statements of representation of fact, but must satisfy themselves by inspection or otherwise as to their accuracy. No person in this firms employment has the authority to make or give any representation or warranty in respect of the property.

4040 Lakeside, Solihull, West Midlands, B37 7YN  
Email: [sales@citizenhousing.org.uk](mailto:sales@citizenhousing.org.uk) or visit [www.citizenhousing.org.uk](http://www.citizenhousing.org.uk)

Energy Efficiency Graph







## Plot 86 Ludlow Green "AH2B" 40% Share

39 Corn Mill Road, Ludlow, SY8 4BL

**40% Shared ownership £106,000**



2



1



1





# Plot 86 Ludlow Green "AH2B" 40% Share



## Description

Plot 86 Ludlow Green "AH2B" Purchase Price £106,000 40% Share  
Total Rent £413.17 pcm

READY TO OCCUPY

If you would like to apply for this property, please complete our online application form via our Signature Website

Please note there is an 80% staircasing restriction on these homes.

\* Images are for illustration purposes only

- New Build
- 2 double bedrooms
- Vinyl flooring to wet areas
- Turf to rear garden
- Transport links to Hereford
- Semi Detached
- Downstairs cloakroom
- Oven, hob & extractor included
- nr Ludlow







**DON'T MISS OUT, ON THESE HOT OFFERS**  
**ALL OFFERS END THE 24/12/25**



## **SHARED OWNERSHIP** **NEW HOMES SALE**

**Offers on selected homes**

**Various offers available\***

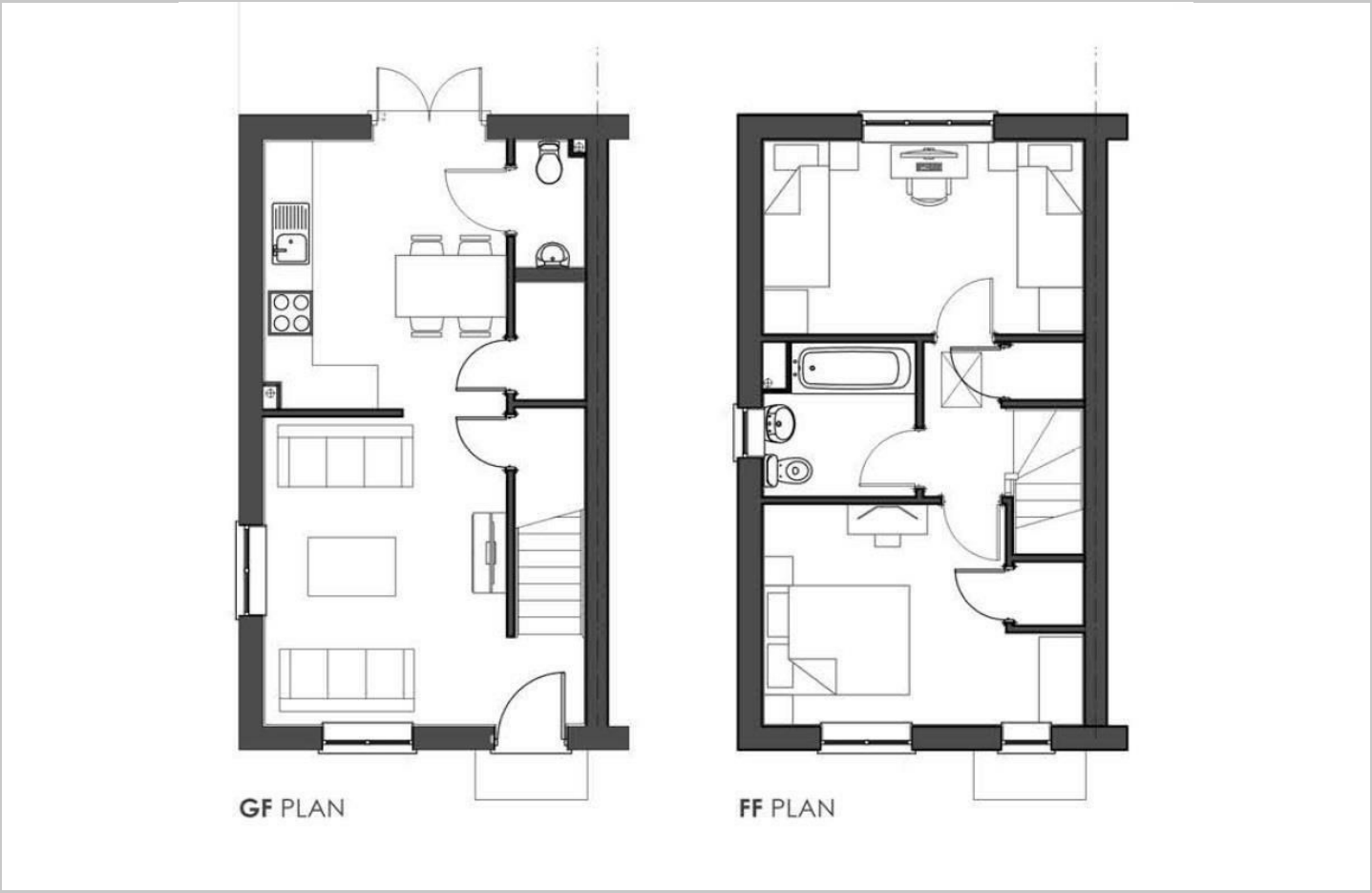
- \* Carpets included**
- \* £1,000 Amazon voucher**
- \* £1,000 Legal fees**

**5 %**

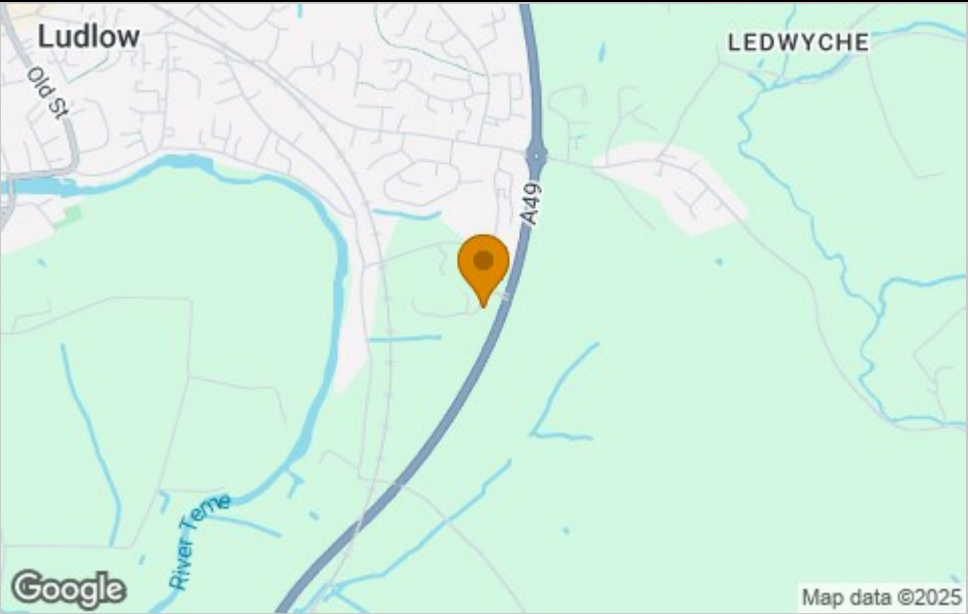
**DEPOSIT PAID (OF ADVERTISED SHARE)**

\* Please note, not all advertised offers are available on each property, please refer to our website [www.citizenhousing.org.uk](http://www.citizenhousing.org.uk)

Floor Plan



Area Map



Viewing

Please contact our sales team at [sales@citizenhousing.org.uk](mailto:sales@citizenhousing.org.uk) if you wish to arrange a viewing appointment for this property or require further information.

These particulars, whilst believed to be accurate are set out as a general outline only for guidance and do not constitute any part of an offer or contract. Intending purchasers should not rely on them as statements of representation of fact, but must satisfy themselves by inspection or otherwise as to their accuracy. No person in this firms employment has the authority to make or give any representation or warranty in respect of the property.

4040 Lakeside, Solihull, West Midlands, B37 7YN  
Email: [sales@citizenhousing.org.uk](mailto:sales@citizenhousing.org.uk) or visit [www.citizenhousing.org.uk](http://www.citizenhousing.org.uk)

Energy Efficiency Graph

