



## Plot 24 Oakfields "Type 860" - 40% Share

49 Oakfields View, Credenhill, HR4 7FL

**40% Shared ownership £116,000**



# Plot 24 Oakfields "Type 860" - 40% Share



## Description

Plot 24 Oakfields View Purchase price £116,000 40% Share  
Total Rent £444.48 pcm

READY TO OCCUPY

Please note there is an 80% staircasing restriction on these homes.

If you would like to apply for this property, please complete our online application form via our Signature Website

All images/photographs are for illustrative purposes only

- New Build
- 2 Parking Spaces
- Fitted kitchen with oven, hob & extractor
- near Hereford
- Downstairs cloakroom
- Semi Detached
- Vinyl flooring to wet areas
- Turf to rear garden
- 2 spacious bedrooms
- uPVC windows

Help with your deposit on 2 & 3  
bedroom homes at Oakfields,  
Credenhill, Hereford, HR4 7FL

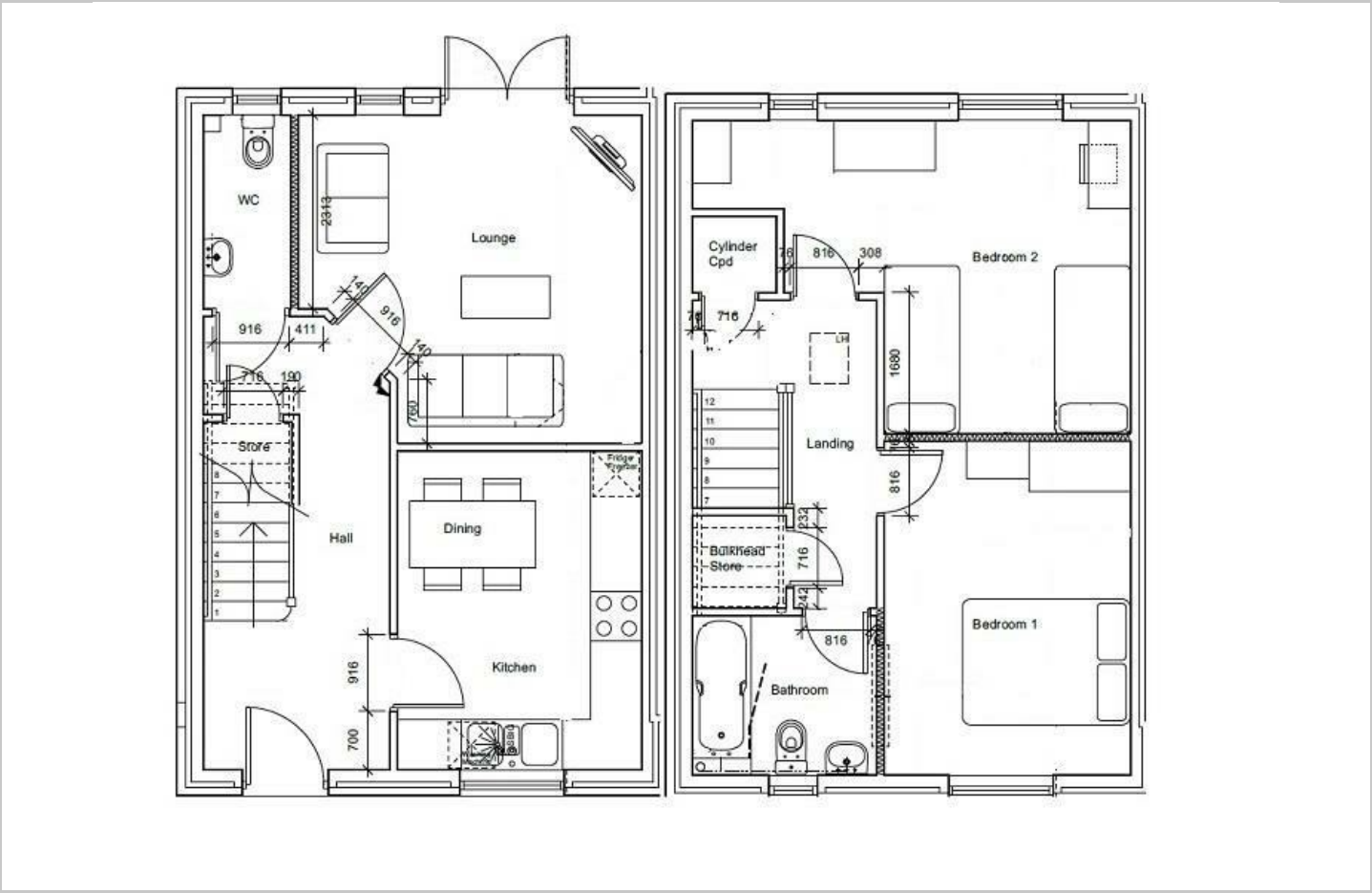
**5%**  
**Deposit**  
**Paid\***

\*5% of advertised  
share only

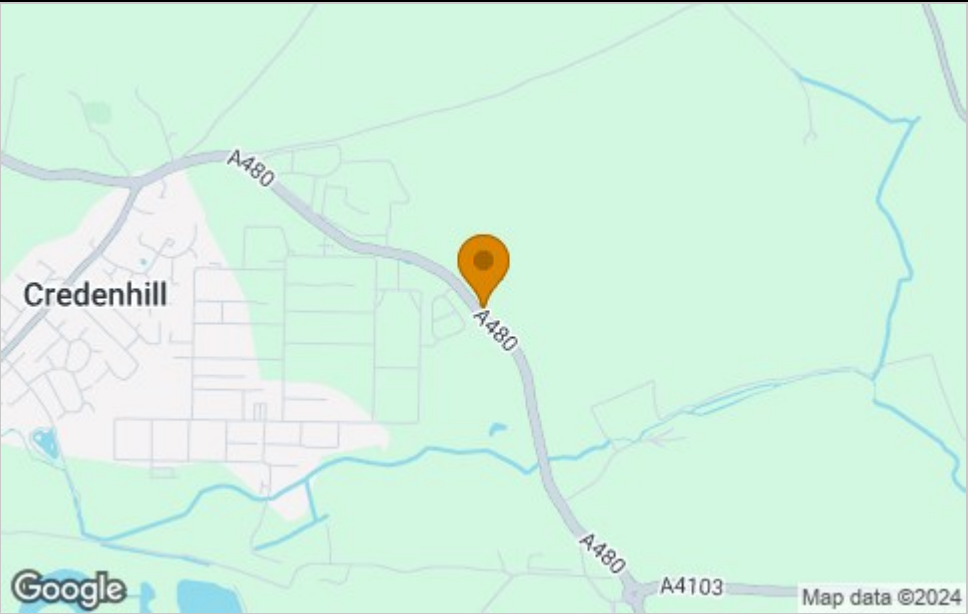




Floor Plan



Area Map



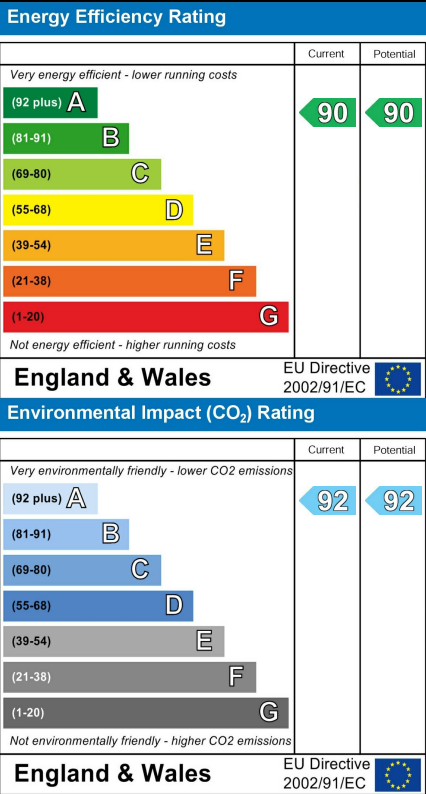
Viewing

Please contact our Citizen-Oakfields, Credenhill Office on 07790336902 if you wish to arrange a viewing appointment for this property

These particulars, whilst believed to be accurate are set out as a general outline only for guidance and do not constitute any part of an offer or contract. Intending purchasers should not rely on them as statements of representation of fact, but must satisfy themselves by inspection or otherwise as to their accuracy. No person in this firms employment has the authority to make or give any representation or warranty in respect of the property.

4040 Lakeside, Solihull, West Midlands, B37 7YN  
Email: [sales@citizenhousing.org.uk](mailto:sales@citizenhousing.org.uk) or visit [www.citizenhousing.org.uk](http://www.citizenhousing.org.uk)

Energy Efficiency Graph





## Plot 31 Oakfields "Type 1001" - 35% Share

63 Oakfields View, Credenhill, HR4 7FL

**35% Shared ownership £123,375**



3



1



1



B

# Plot 31 Oakfields "Type 1001" - 35% Share



## Description

Plot 31 Oakfields View Purchase Price £123,375 35% Share  
Total Rent £576.85 pcm

Ready to occupy September 2024 - AVAILABLE TO RESERVE NOW

Please note there is an 80% staircasing restriction on these homes.

If you would like to apply for this property, please complete our online application form via our Signature Website

All images/photographs are for illustrative purposes only

- New Build
- 2 Parking Spaces
- Fitted kitchen with oven, hob & extractor
- near Hereford
- Downstairs cloakroom
- End Terrace
- Vinyl flooring to wet areas
- Turf to rear garden
- 3 bedrooms
- uPVC windows

Help with your deposit on 2 & 3  
bedroom homes at Oakfields,  
Credenhill, Hereford, HR4 7FL

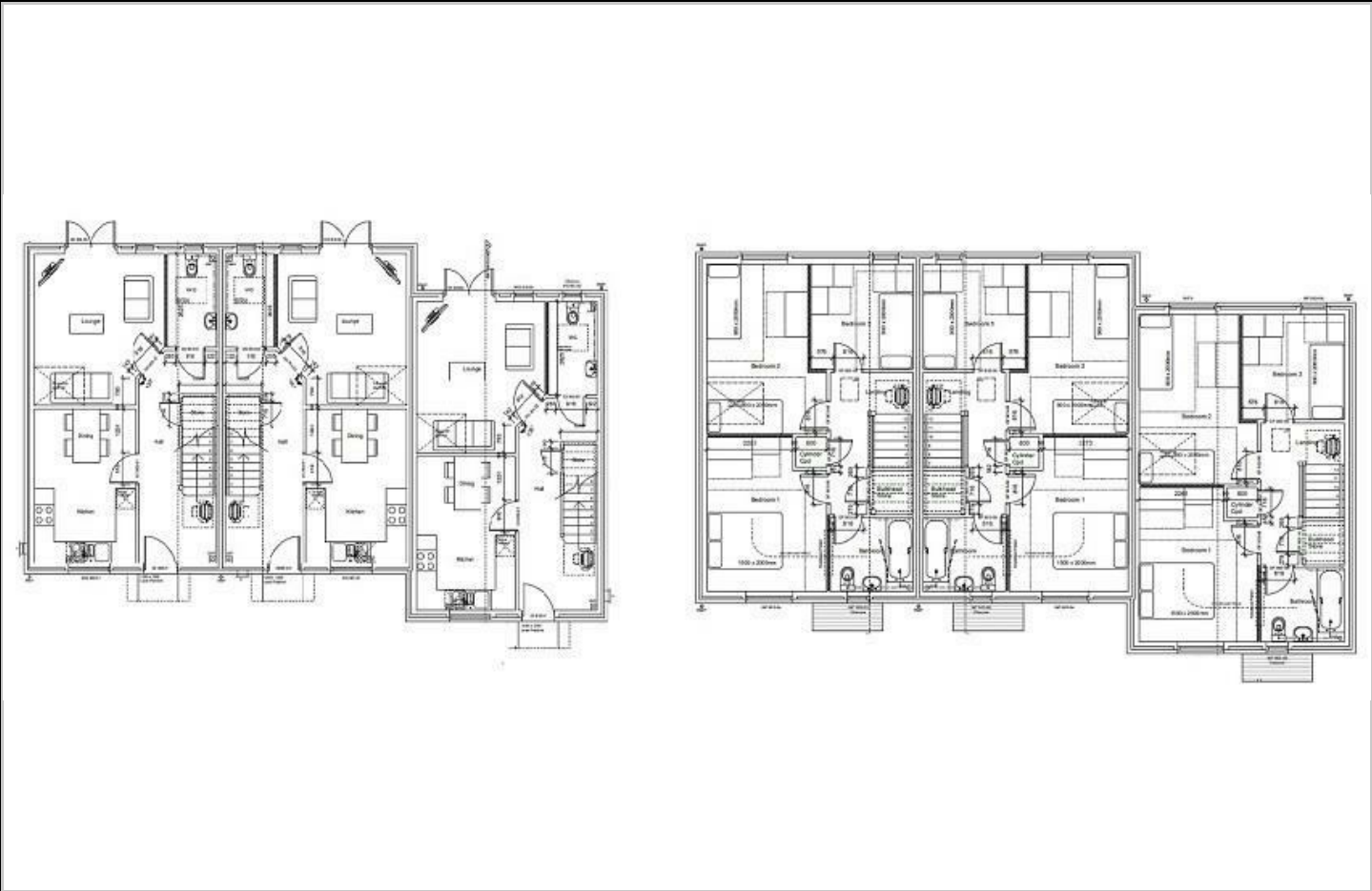
**5%**  
**Deposit**  
**Paid\***

\*5% of advertised  
share only

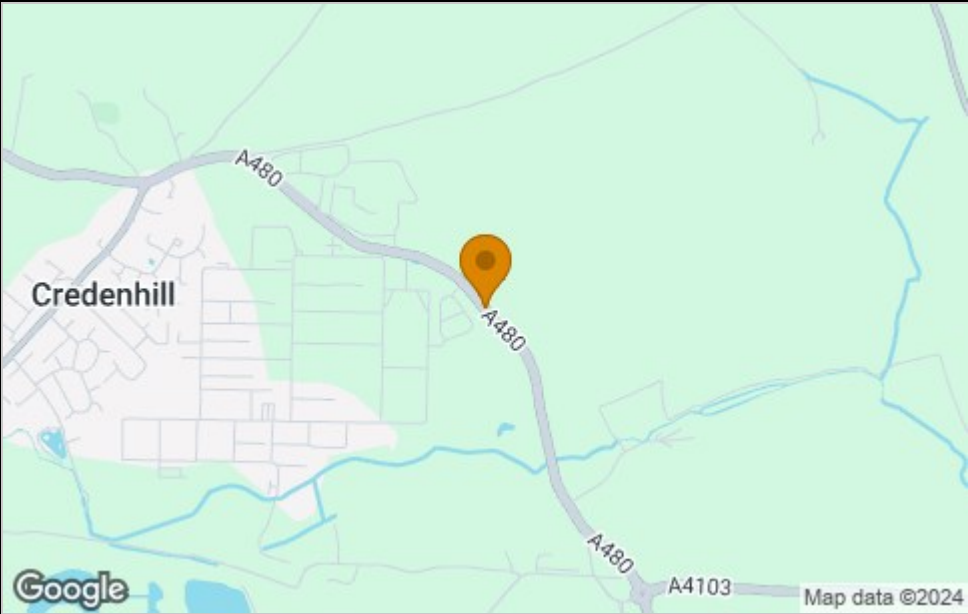




Floor Plan



Area Map



Viewing

Please contact our Citizen-Oakfields, Credenhill Office on 07790336902 if you wish to arrange a viewing appointment for this property

These particulars, whilst believed to be accurate are set out as a general outline only for guidance and do not constitute any part of an offer or contract. Intending purchasers should not rely on them as statements of representation of fact, but must satisfy themselves by inspection or otherwise as to their accuracy. No person in this firms employment has the authority to make or give any representation or warranty in respect of the property.

4040 Lakeside, Solihull, West Midlands, B37 7YN  
Email: [sales@citizenhousing.org.uk](mailto:sales@citizenhousing.org.uk) or visit [www.citizenhousing.org.uk](http://www.citizenhousing.org.uk)

Energy Efficiency Graph

Energy Efficiency Rating		
	Current	Potential
Very energy efficient - lower running costs		
(92 plus) A	90	90
(81-91) B		
(69-80) C		
(55-68) D		
(39-54) E		
(21-38) F		
(1-20) G		
Not energy efficient - higher running costs		
England & Wales EU Directive 2002/91/EC		
Environmental Impact (CO <sub>2</sub> ) Rating		
	Current	Potential
Very environmentally friendly - lower CO <sub>2</sub> emissions		
(92 plus) A	92	92
(81-91) B		
(69-80) C		
(55-68) D		
(39-54) E		
(21-38) F		
(1-20) G		
Not environmentally friendly - higher CO <sub>2</sub> emissions		
England & Wales EU Directive 2002/91/EC		



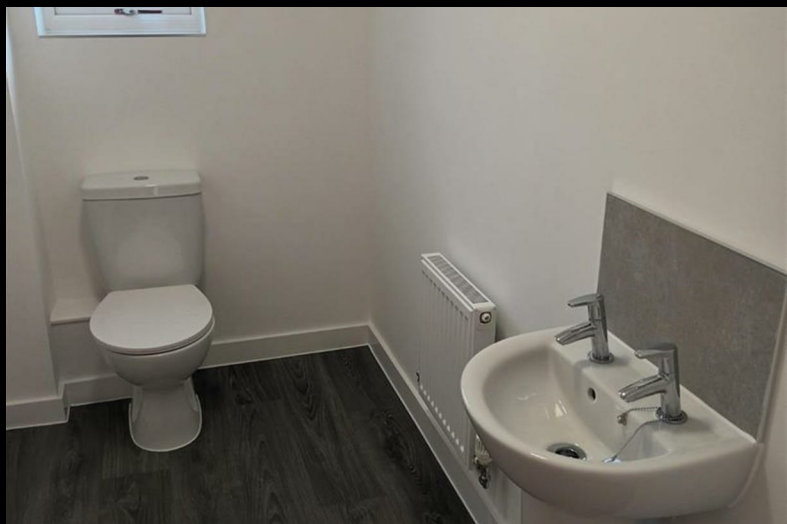
## Plot 32 Oakfields "Type 1001" - 35% Share

65 Oakfields View, Credenhill, HR4 7FL

**35% Shared ownership £122,500**



# Plot 32 Oakfields "Type 1001" - 35% Share



## Description

Plot 32 Oakfields View Purchase Price £122,500 35% Share  
Total Rent £573.12 pcm

Ready to occupy September 2024 - AVAILABLE TO RESERVE NOW

Please note there is an 80% staircasing restriction on these homes.

If you would like to apply for this property, please complete our online application form via our Signature Website

All images/photographs are for illustrative purposes only

- New Build
- 2 Parking Spaces
- Fitted kitchen with oven, hob & extractor
- near Hereford
- Downstairs cloakroom
- Mid Terrace
- Vinyl flooring to wet areas
- Turf to rear garden
- 3 bedrooms
- uPVC windows

Help with your deposit on 2 & 3 bedroom homes at Oakfields, Credenhill, Hereford, HR4 7FL

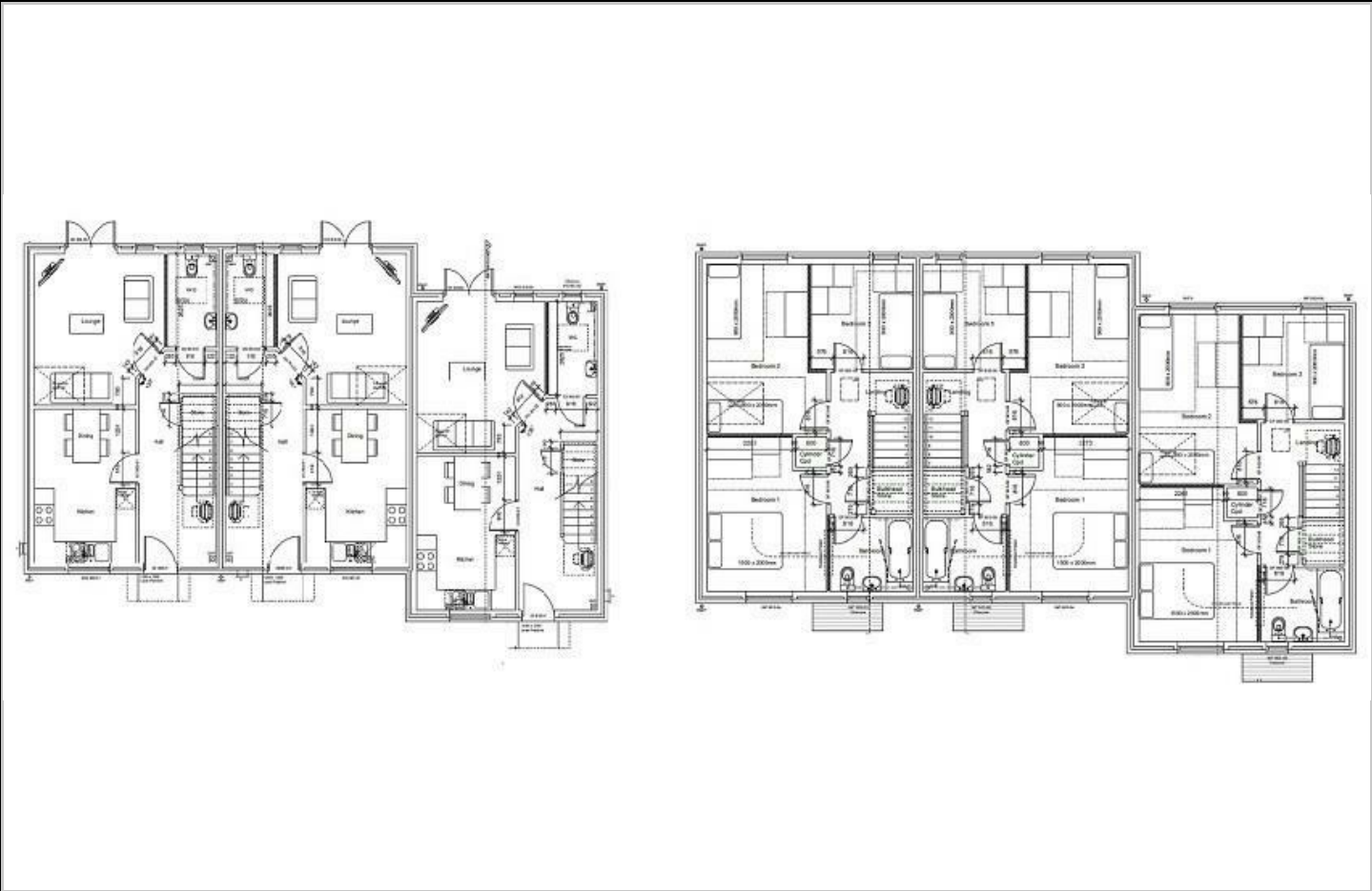
**5%  
Deposit  
Paid\***

\*5% of advertised share only

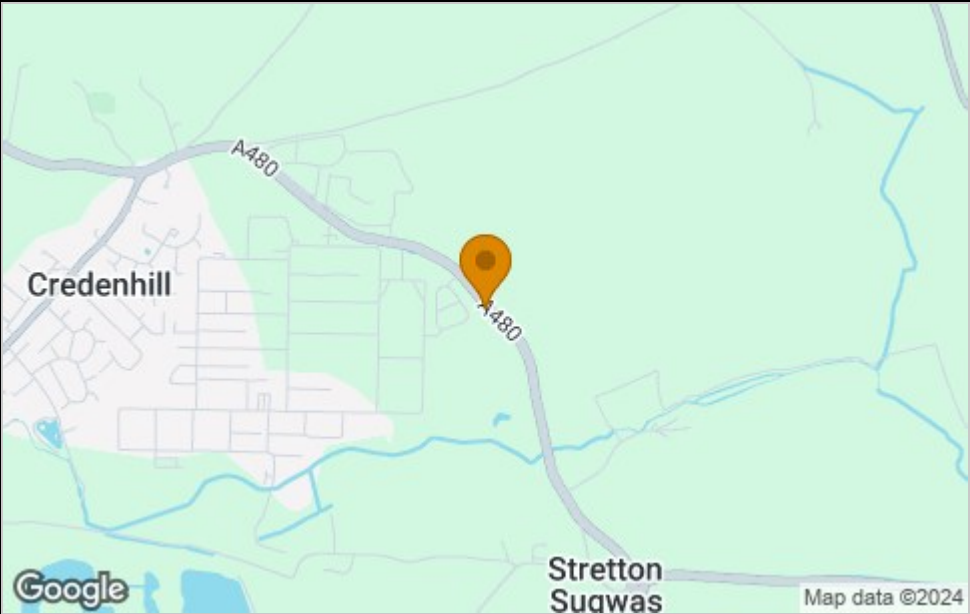




Floor Plan



Area Map



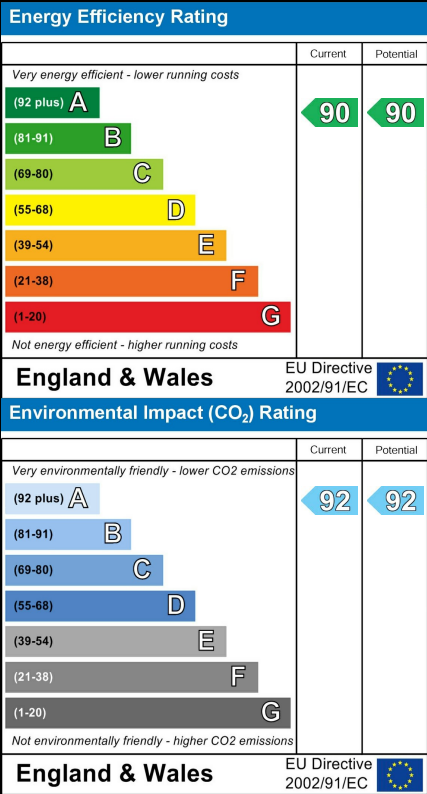
Viewing

Please contact our Citizen-Oakfields, Credenhill Office on 07790336902 if you wish to arrange a viewing appointment for this property

These particulars, whilst believed to be accurate are set out as a general outline only for guidance and do not constitute any part of an offer or contract. Intending purchasers should not rely on them as statements of representation of fact, but must satisfy themselves by inspection or otherwise as to their accuracy. No person in this firms employment has the authority to make or give any representation or warranty in respect of the property.

4040 Lakeside, Solihull, West Midlands, B37 7YN  
Email: [sales@citizenhousing.org.uk](mailto:sales@citizenhousing.org.uk) or visit [www.citizenhousing.org.uk](http://www.citizenhousing.org.uk)

Energy Efficiency Graph





## Plot 33 Oakfields "Type 1001" - 35% Share

67 Oakfields View, Credenhill, HR4 7FL

**35% Shared ownership £123,375**



# Plot 33 Oakfields "Type 1001" - 35% Share



## Description

Plot 33 Oakfields View Purchase Price £123,375 35% Share  
Total Rent £576.85 pcm

Ready to occupy September 2024 - AVAILABLE TO RESERVE NOW

Please note there is an 80% staircasing restriction on these homes.

If you would like to apply for this property, please complete our online application form via our Signature Website

All images/photographs are for illustrative purposes only

- New Build
- 2 Parking Spaces
- Fitted kitchen with oven, hob & extractor
- near Hereford
- Downstairs cloakroom
- End Terrace
- Vinyl flooring to wet areas
- Turf to rear garden
- 3 bedrooms
- uPVC windows

Help with your deposit on 2 & 3  
bedroom homes at Oakfields,  
Credenhill, Hereford, HR4 7FL

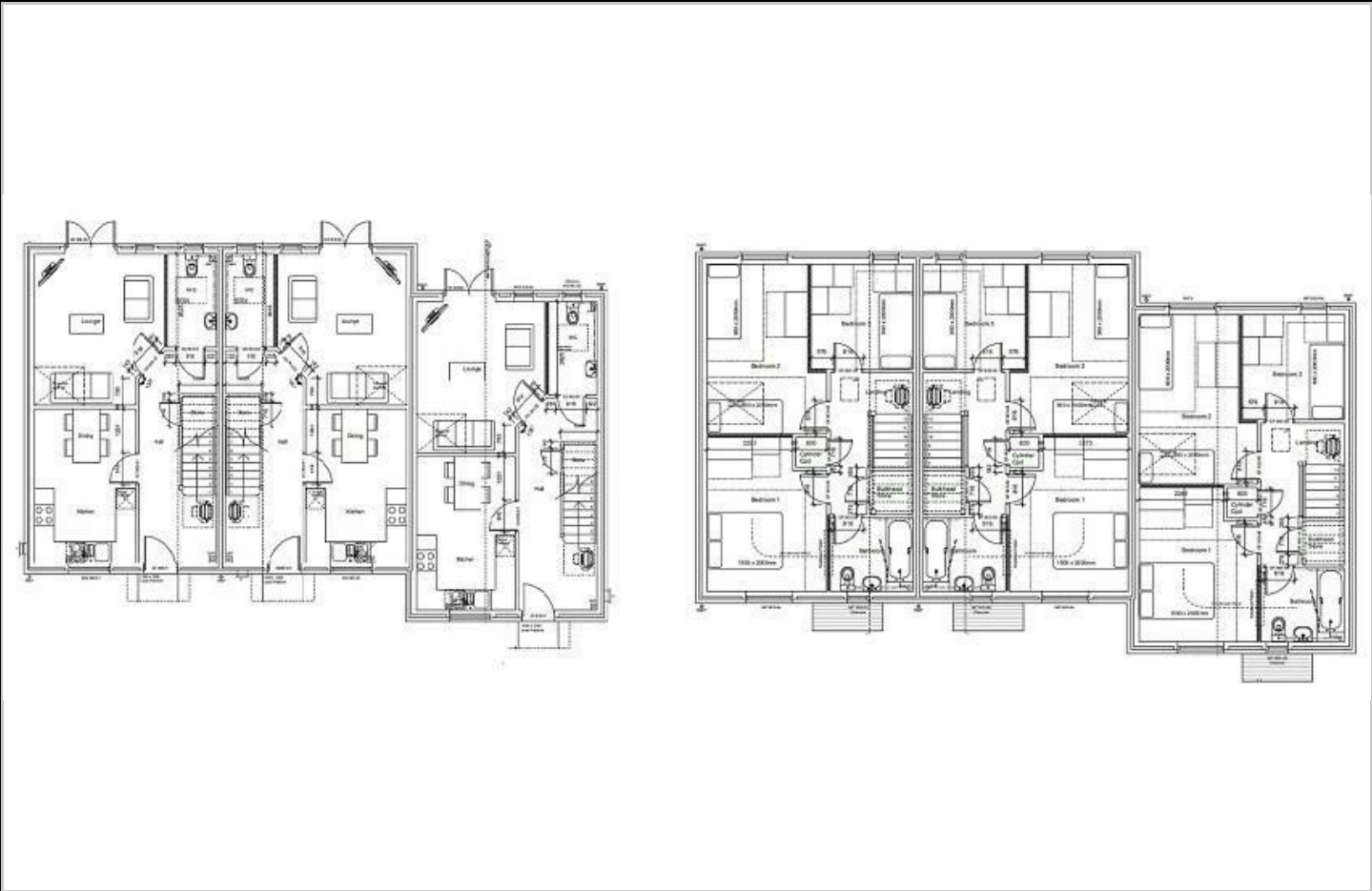
**5%**  
**Deposit**  
**Paid\***

\*5% of advertised  
share only

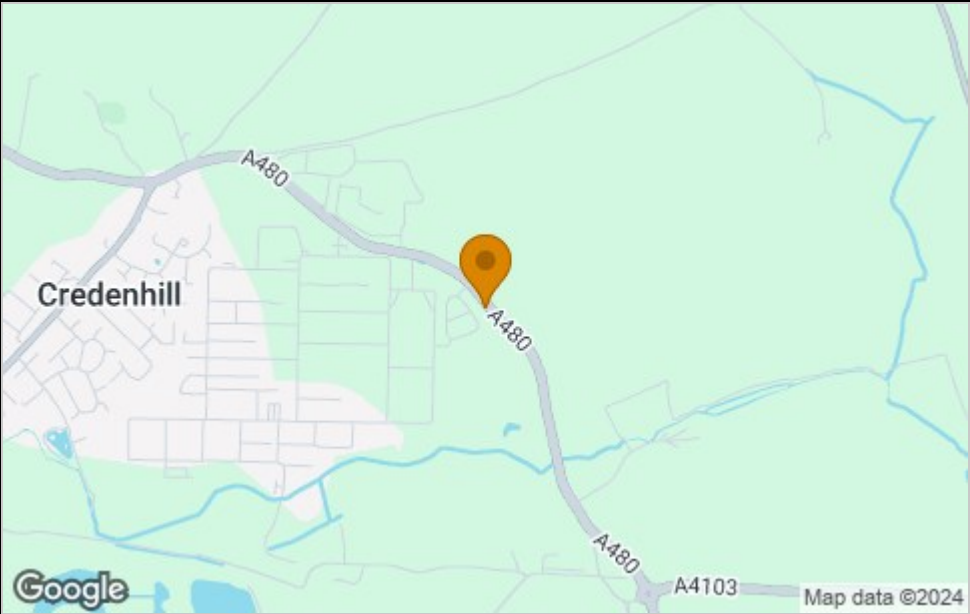




Floor Plan



Area Map



Viewing

Please contact our Citizen-Oakfields, Credenhill Office on 07790336902 if you wish to arrange a viewing appointment for this property

These particulars, whilst believed to be accurate are set out as a general outline only for guidance and do not constitute any part of an offer or contract. Intending purchasers should not rely on them as statements of representation of fact, but must satisfy themselves by inspection or otherwise as to their accuracy. No person in this firms employment has the authority to make or give any representation or warranty in respect of the property.

4040 Lakeside, Solihull, West Midlands, B37 7YN  
Email: [sales@citizenhousing.org.uk](mailto:sales@citizenhousing.org.uk) or visit [www.citizenhousing.org.uk](http://www.citizenhousing.org.uk)

Energy Efficiency Graph

Energy Efficiency Rating		
	Current	Potential
Very energy efficient - lower running costs		
(92 plus) A	90	90
(81-91) B		
(69-80) C		
(55-68) D		
(39-54) E		
(21-38) F		
(1-20) G		
Not energy efficient - higher running costs		
England & Wales EU Directive 2002/91/EC		
Environmental Impact (CO <sub>2</sub> ) Rating		
	Current	Potential
Very environmentally friendly - lower CO <sub>2</sub> emissions		
(92 plus) A	92	92
(81-91) B		
(69-80) C		
(55-68) D		
(39-54) E		
(21-38) F		
(1-20) G		
Not environmentally friendly - higher CO <sub>2</sub> emissions		
England & Wales EU Directive 2002/91/EC		



## Plot 55 Oakfields "Type 860" - 40% Share

26 Oakfields View, Credenhill, HR4 7FL

**40% Shared ownership £116,000**



2



1



1



B

# Plot 55 Oakfields "Type 860" - 40% Share

Help with your deposit on 2 & 3  
bedroom homes at Oakfields,  
Credenhill, Hereford, HR4 7FL

**5%  
Deposit  
Paid\***

\*5% of advertised  
share only



## Description

Plot 55 Oakfields View Purchase price £116,000 40% Share  
Total Rent £444.48 pcm

Please note there is an 80% staircasing restriction on these homes.

If you would like to apply for this property, please complete our  
online application form via our Signature Website

READY TO OCCUPY

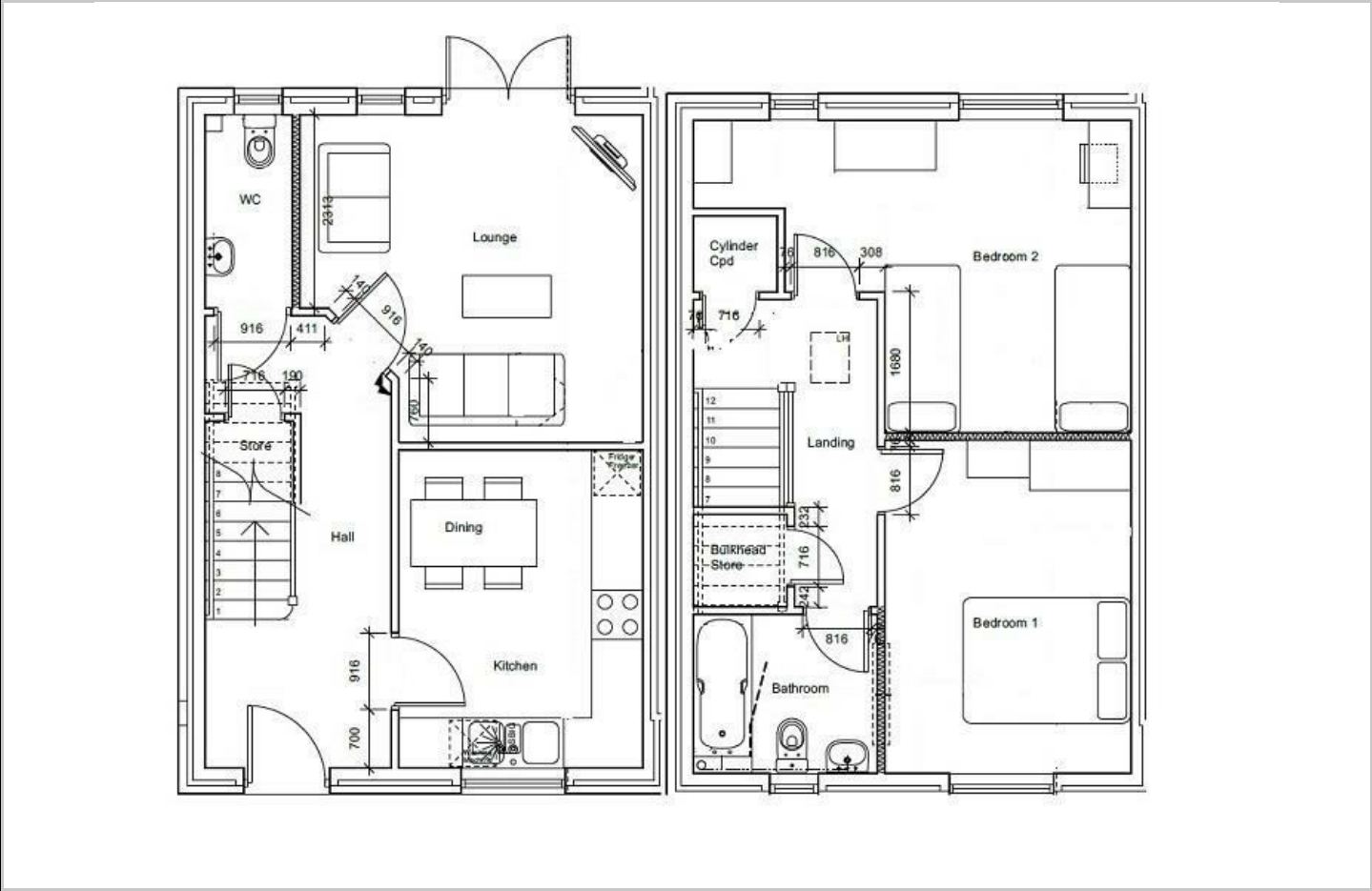
All images/photographs are for illustrative purposes only

- New Build
- 2 Parking Spaces
- Fitted kitchen with oven, hob & extractor
- near Hereford
- Downstairs cloakroom
- Semi Detached
- Vinyl flooring to wet areas
- Turf to rear garden
- 2 spacious bedrooms
- uPVC windows

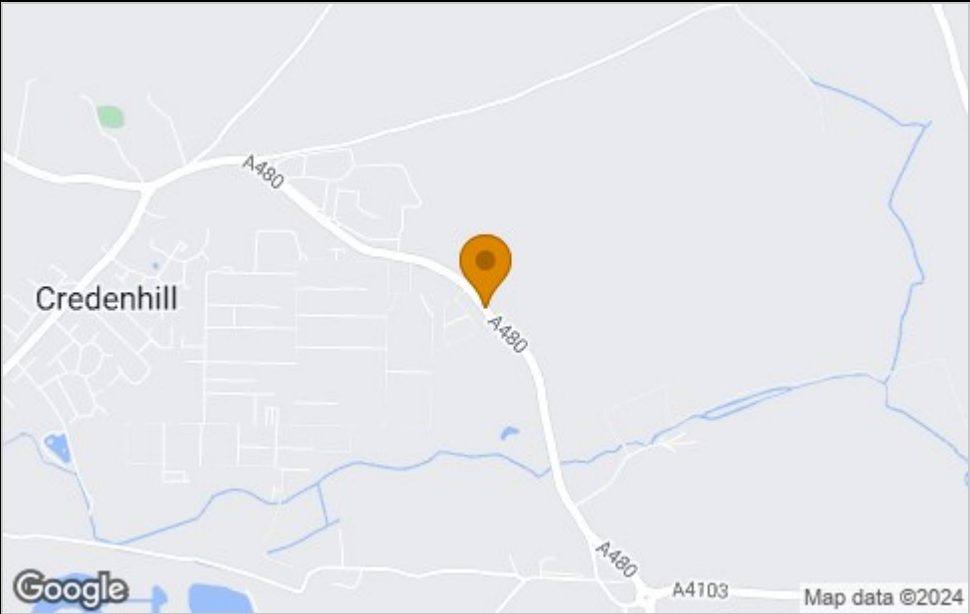




Floor Plan



Area Map



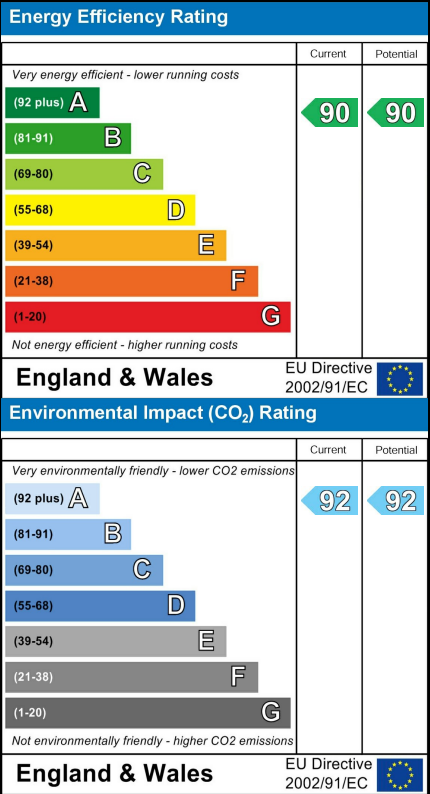
Viewing

Please contact our Sales Advisor Oksana on 07946 505552 if you wish to arrange a viewing appointment for this property or require further information.

These particulars, whilst believed to be accurate are set out as a general outline only for guidance and do not constitute any part of an offer or contract. Intending purchasers should not rely on them as statements of representation of fact, but must satisfy themselves by inspection or otherwise as to their accuracy. No person in this firms employment has the authority to make or give any representation or warranty in respect of the property.

4040 Lakeside, Solihull, West Midlands, B37 7YN  
Email: [sales@citizenhousing.org.uk](mailto:sales@citizenhousing.org.uk) or visit [www.citizenhousing.org.uk](http://www.citizenhousing.org.uk)

Energy Efficiency Graph





## Plot 57 Oakfields "Type 1001" - 35% Share

22 Oakfields View, Credenhill, HR4 7FL

**35% Shared ownership £124,250**



3



1



1



B

# Plot 57 Oakfields "Type 1001" - 35% Share

Help with your deposit on 2 & 3 bedroom homes at Oakfields, Credenhill, Hereford, HR4 7FL

**5% Deposit Paid\***

\*5% of advertised share only



## Description

Plot 57 Oakfields View Purchase Price £124,250 35% Share  
Total Rent £575.10 pcm

READY TO OCCUPY

Please note there is an 80% staircasing restriction on these homes.

If you would like to apply for this property, please complete our online application form via our Signature Website

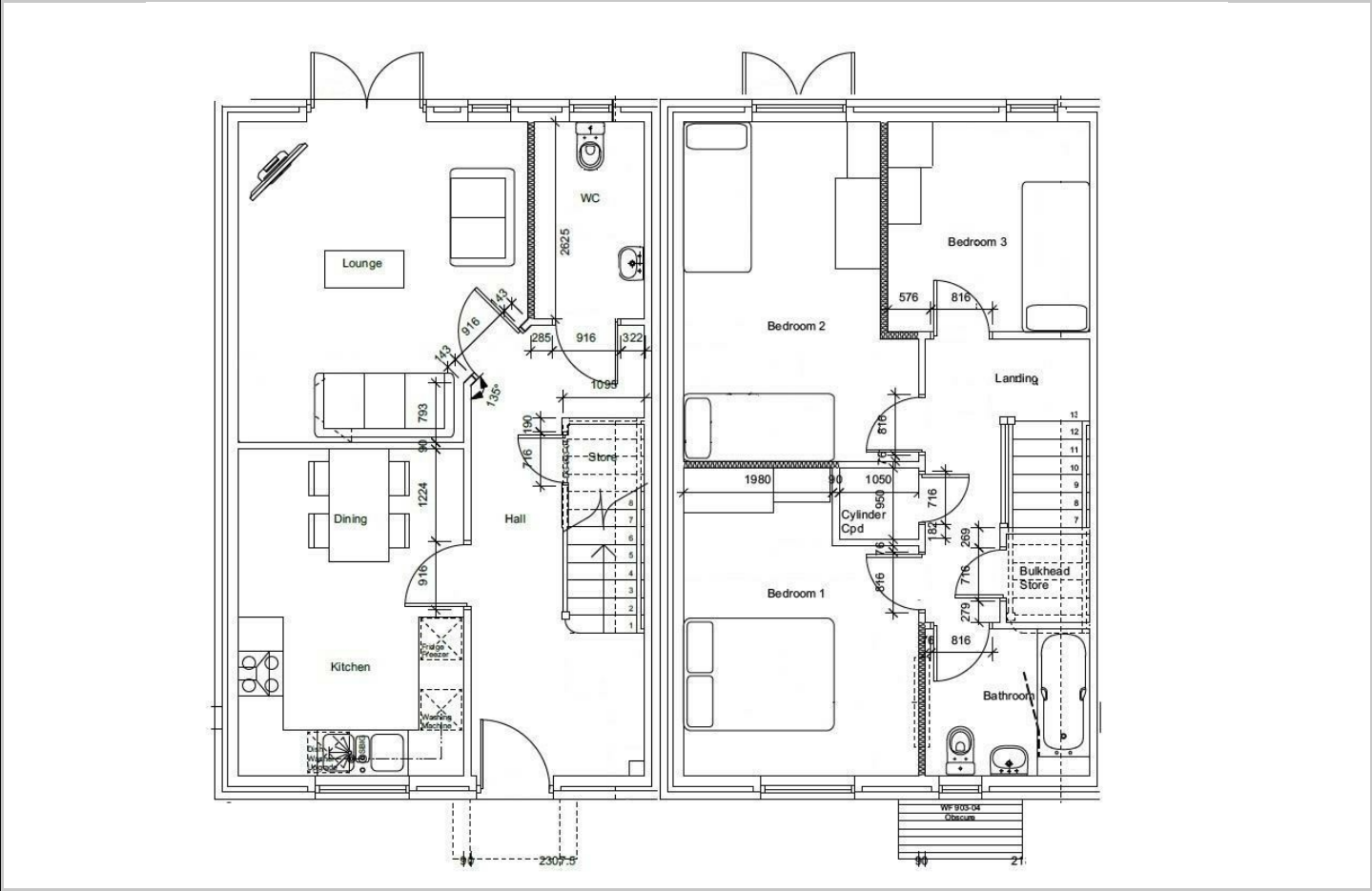
All images/photographs are for illustrative purposes only

- New Build
- 2 Parking Spaces
- Fitted kitchen with oven, hob & extractor
- near Hereford
- Downstairs cloakroom
- Semi Detached
- Vinyl flooring to wet areas
- Turf to rear garden
- 3 bedrooms
- uPVC windows

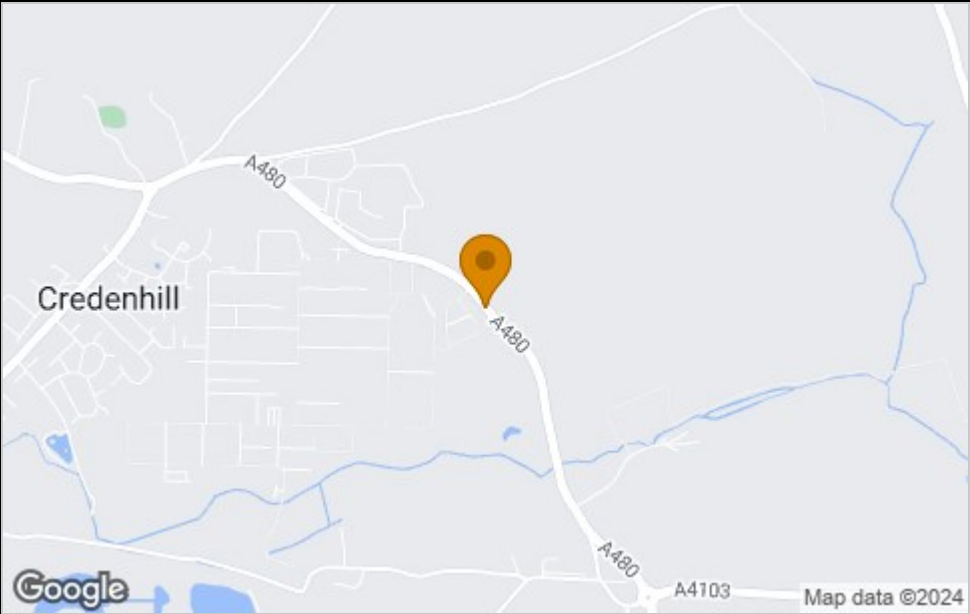




Floor Plan



Area Map



Viewing

Please contact our Sales Advisor Oksana on 07946 505552 if you wish to arrange a viewing appointment for this property or require further information.

These particulars, whilst believed to be accurate are set out as a general outline only for guidance and do not constitute any part of an offer or contract. Intending purchasers should not rely on them as statements of representation of fact, but must satisfy themselves by inspection or otherwise as to their accuracy. No person in this firms employment has the authority to make or give any representation or warranty in respect of the property.

4040 Lakeside, Solihull, West Midlands, B37 7YN  
Email: [sales@citizenhousing.org.uk](mailto:sales@citizenhousing.org.uk) or visit [www.citizenhousing.org.uk](http://www.citizenhousing.org.uk)

Energy Efficiency Graph

