



## Plot 16 Sonnet Park “Haldon” 40% Share

33 Windhover Road, Stratford-Upon-Avon, CV37 7FY

**40% Shared ownership £112,600**



# Plot 16 Sonnet Park "Haldon" 40% Share



## Description

Plot 16 Sonnet Park "Haldon" 40% Share Total Rent £439.95 pcm

READY TO OCCUPY

This house type is 772 sq ft which is larger than the 2 bedroom Persimmon private homes available, "Alnmouth (643sq ft)" and the "Arden" (554 sq ft)

If you would like to apply for this property, please complete our online application form via our Signature Website

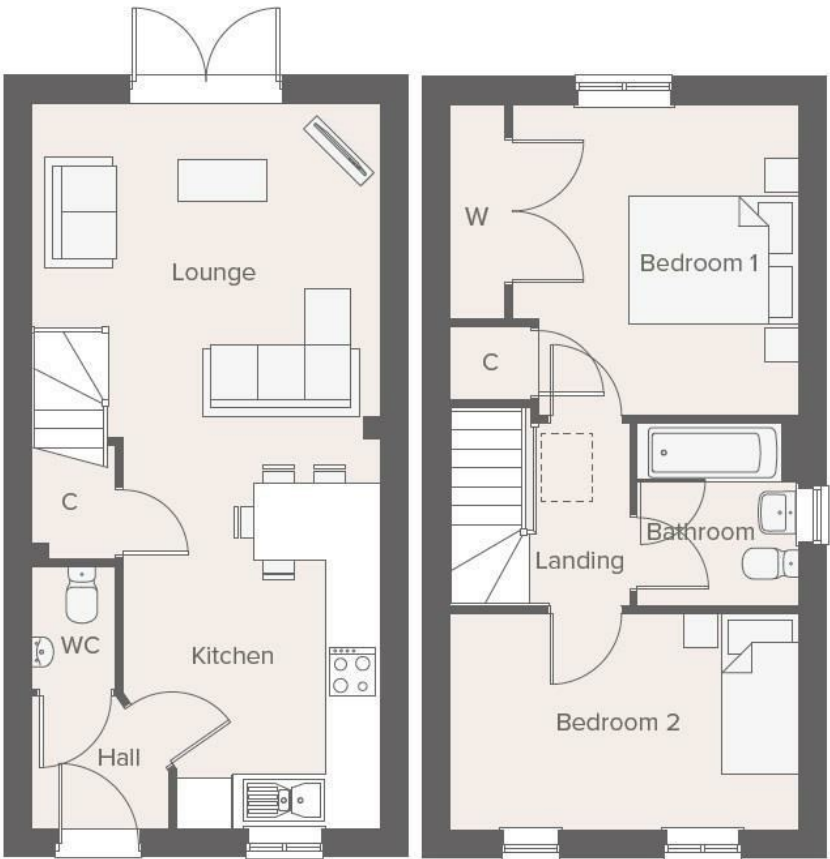
- Mid terrace
- Vinyl flooring to wet areas
- Turf to rear garden
- Oven, hob and extractor included
- New build
- 2 parking spaces
- Carpets fitted throughout
- 2 spacious bedrooms
- Good transport links - nr Warwick
- Downstairs clockroom



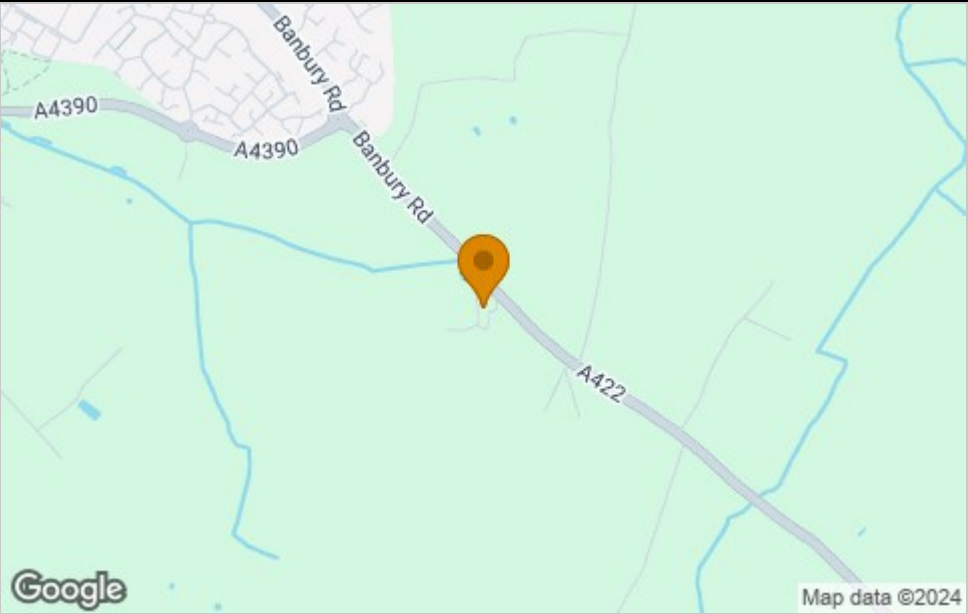




Floor Plan



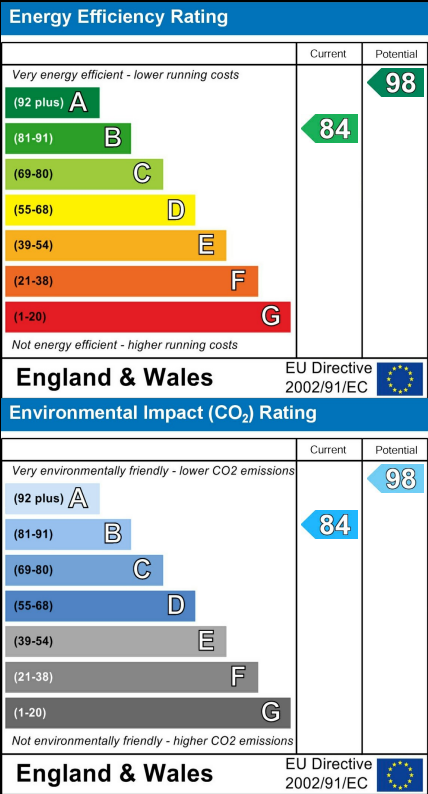
Area Map



Viewing

Please contact our Sales Advisor Sara on 07967 321165 if you wish to arrange a viewing appointment for this property or require further information.

Energy Efficiency Graph



These particulars, whilst believed to be accurate are set out as a general outline only for guidance and do not constitute any part of an offer or contract. Intending purchasers should not rely on them as statements of representation of fact, but must satisfy themselves by inspection or otherwise as to their accuracy. No person in this firms employment has the authority to make or give any representation or warranty in respect of the property.

4040 Lakeside, Solihull, West Midlands, B37 7YN  
Email: [sales@citizenhousing.org.uk](mailto:sales@citizenhousing.org.uk) or visit [www.citizenhousing.org.uk](http://www.citizenhousing.org.uk)





## Plot 17 Sonnet Park “Haldon” 40% Share

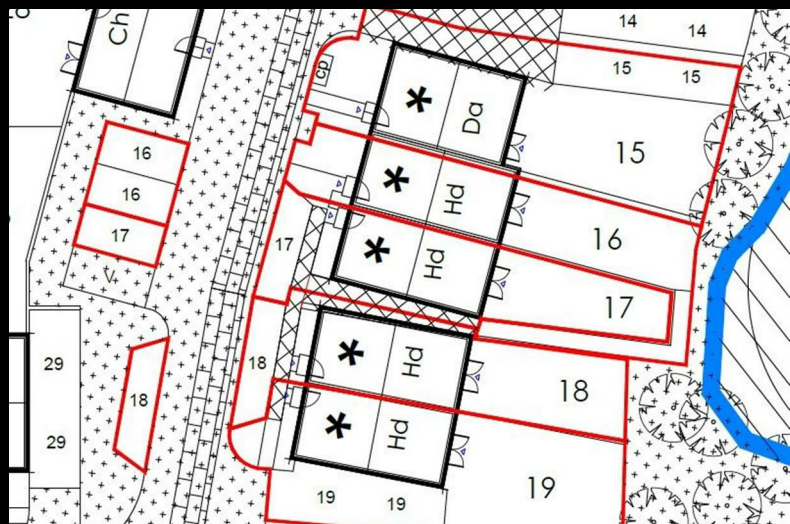
35 Windhover Road, Stratford-Upon-Avon, CV37 7FY

**40% Shared ownership £114,510**





# Plot 17 Sonnet Park "Haldon" 40% Share



## Description

Plot 17 Sonnet Park "Haldon" 40% Share Total Rent £446.52 pcm

READY TO OCCUPY

This house type is 772 sq ft which is larger than the 2 bedroom Persimmon private homes available, "Alnmouth (643sq ft)" and the "Arden" (554 sq ft)

If you would like to apply for this property, please complete our online application form via our Signature Website

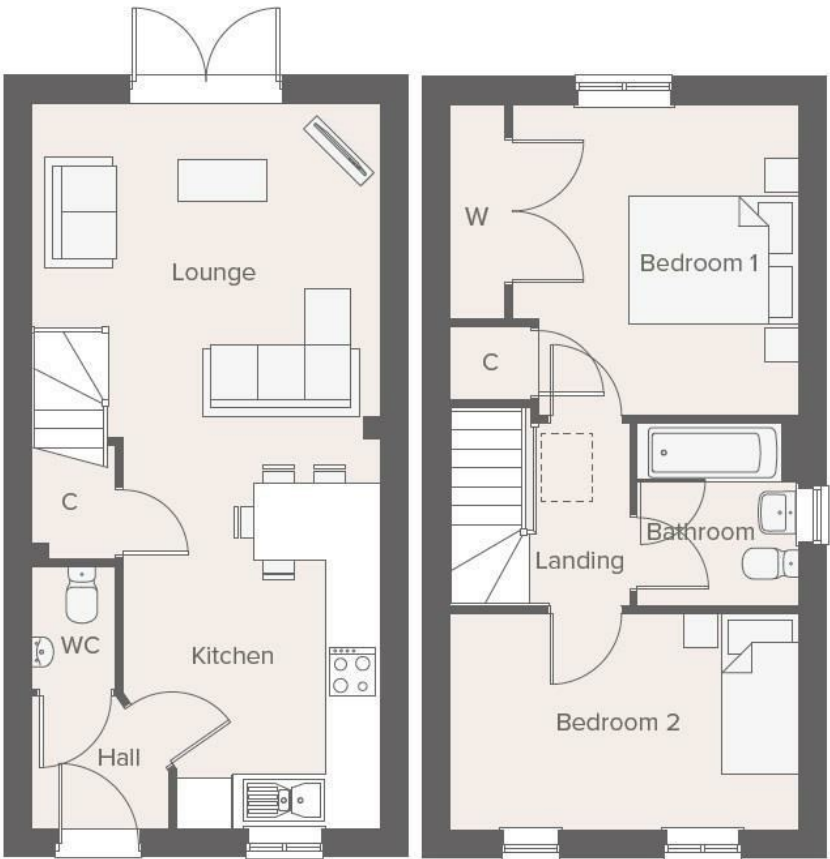
- End terrace
- Vinyl flooring to wet areas
- Turf to rear garden
- Oven, hob and extractor included
- New build
- 2 parking spaces
- Carpets fitted throughout
- 2 spacious bedrooms
- nr Warwick - good transport links
- Downstairs cloakroom



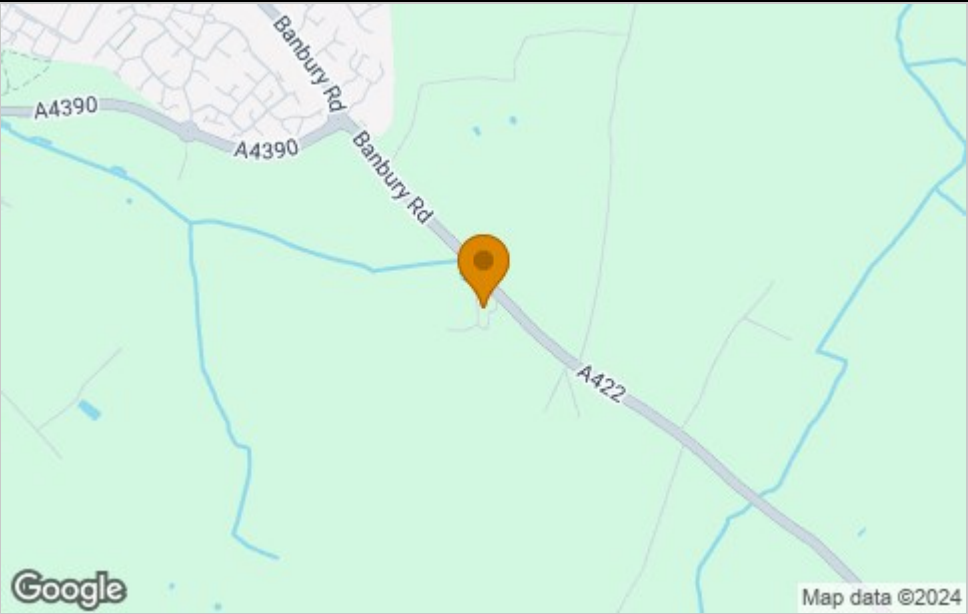




Floor Plan



Area Map



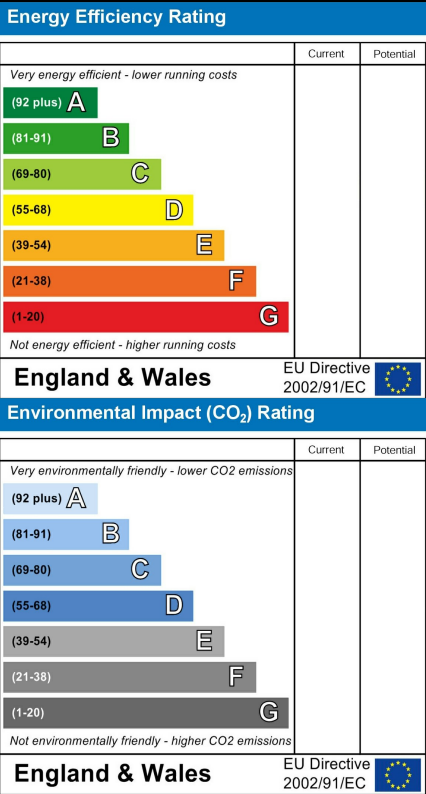
Viewing

Please contact our Sales Advisor Sara on 07967 321165 if you wish to arrange a viewing appointment for this property or require further information.

These particulars, whilst believed to be accurate are set out as a general outline only for guidance and do not constitute any part of an offer or contract. Intending purchasers should not rely on them as statements of representation of fact, but must satisfy themselves by inspection or otherwise as to their accuracy. No person in this firms employment has the authority to make or give any representation or warranty in respect of the property.

4040 Lakeside, Solihull, West Midlands, B37 7YN  
Email: [sales@citizenhousing.org.uk](mailto:sales@citizenhousing.org.uk) or visit [www.citizenhousing.org.uk](http://www.citizenhousing.org.uk)

Energy Efficiency Graph







## Plot 18 Sonnet Park “Haldon” 40% Share

37 Windhover Road, Stratford-Upon-Avon, CV37 7FY

**40% Shared ownership £116,510**





# Plot 18 Sonnet Park “Haldon” 40% Share



## Description

Plot 18 Sonnet Park “Haldon” 40% Share £129,150 Total Rent £453.39 pcm

### READY TO OCCUPY

This house type is 772 sq ft which is larger than the 2 bedroom Persimmon private homes available, "Alnmouth (643sq ft)" and the "Arden" (554 sq ft)

If you would like to apply for this property, please complete our online application form via our Signature Website

- Semi Detached
- Vinyl flooring to wet areas
- Turf to rear garden
- Oven, hob and extractor included
- New build
- 2 parking spaces
- Carpets fitted throughout
- 2 spacious bedrooms
- Good transport links - nr Warwick
- Downstairs cloakroom



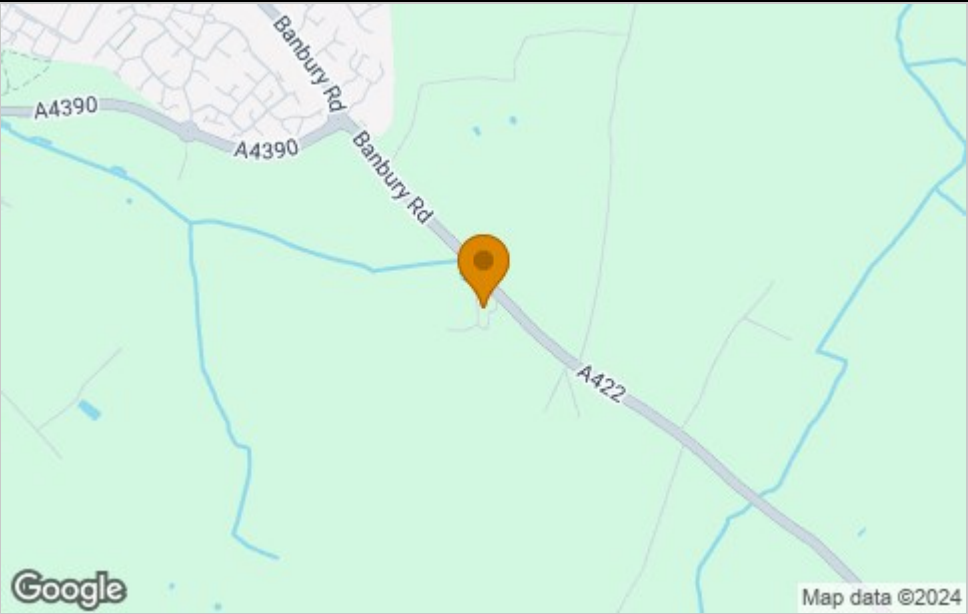




Floor Plan



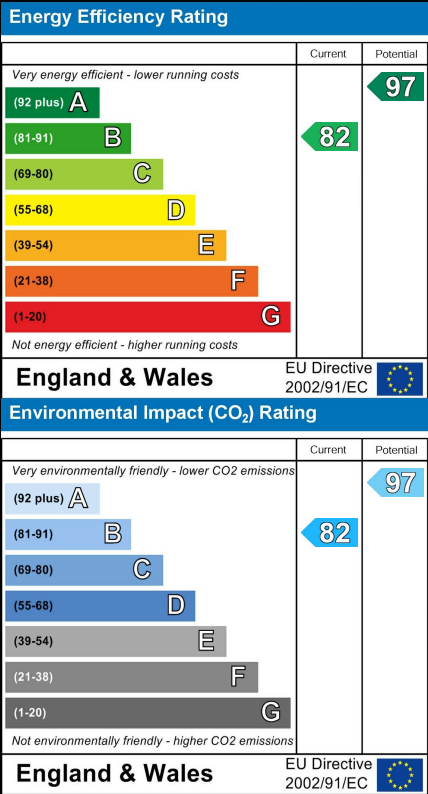
Area Map



Viewing

Please contact our Sales Advisor Sara on 07967 321165 if you wish to arrange a viewing appointment for this property or require further information.

Energy Efficiency Graph



These particulars, whilst believed to be accurate are set out as a general outline only for guidance and do not constitute any part of an offer or contract. Intending purchasers should not rely on them as statements of representation of fact, but must satisfy themselves by inspection or otherwise as to their accuracy. No person in this firms employment has the authority to make or give any representation or warranty in respect of the property.

4040 Lakeside, Solihull, West Midlands, B37 7YN  
Email: [sales@citizenhousing.org.uk](mailto:sales@citizenhousing.org.uk) or visit [www.citizenhousing.org.uk](http://www.citizenhousing.org.uk)





## Plot 19 Sonnet Park “Haldon” 40% Share

39 Windhover Road, Stratford-Upon-Avon, CV37 7FY

**40% Shared ownership £116,510**



2



1



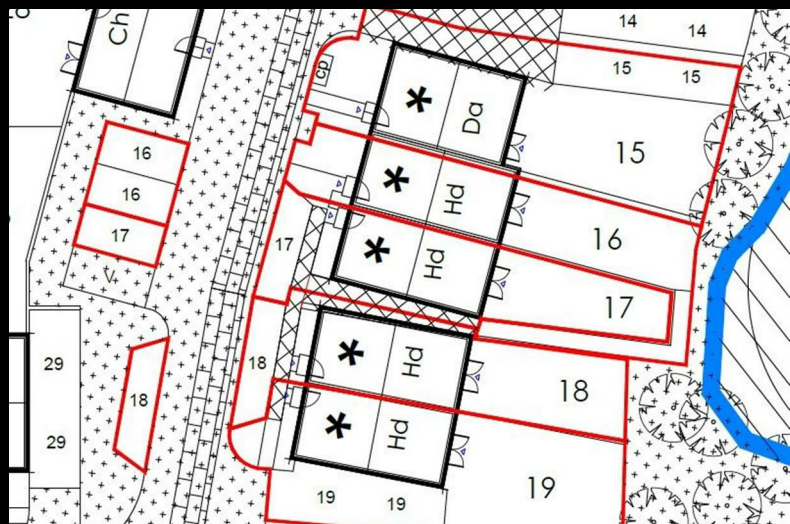
1



B



# Plot 19 Sonnet Park "Haldon" 40% Share



## Description

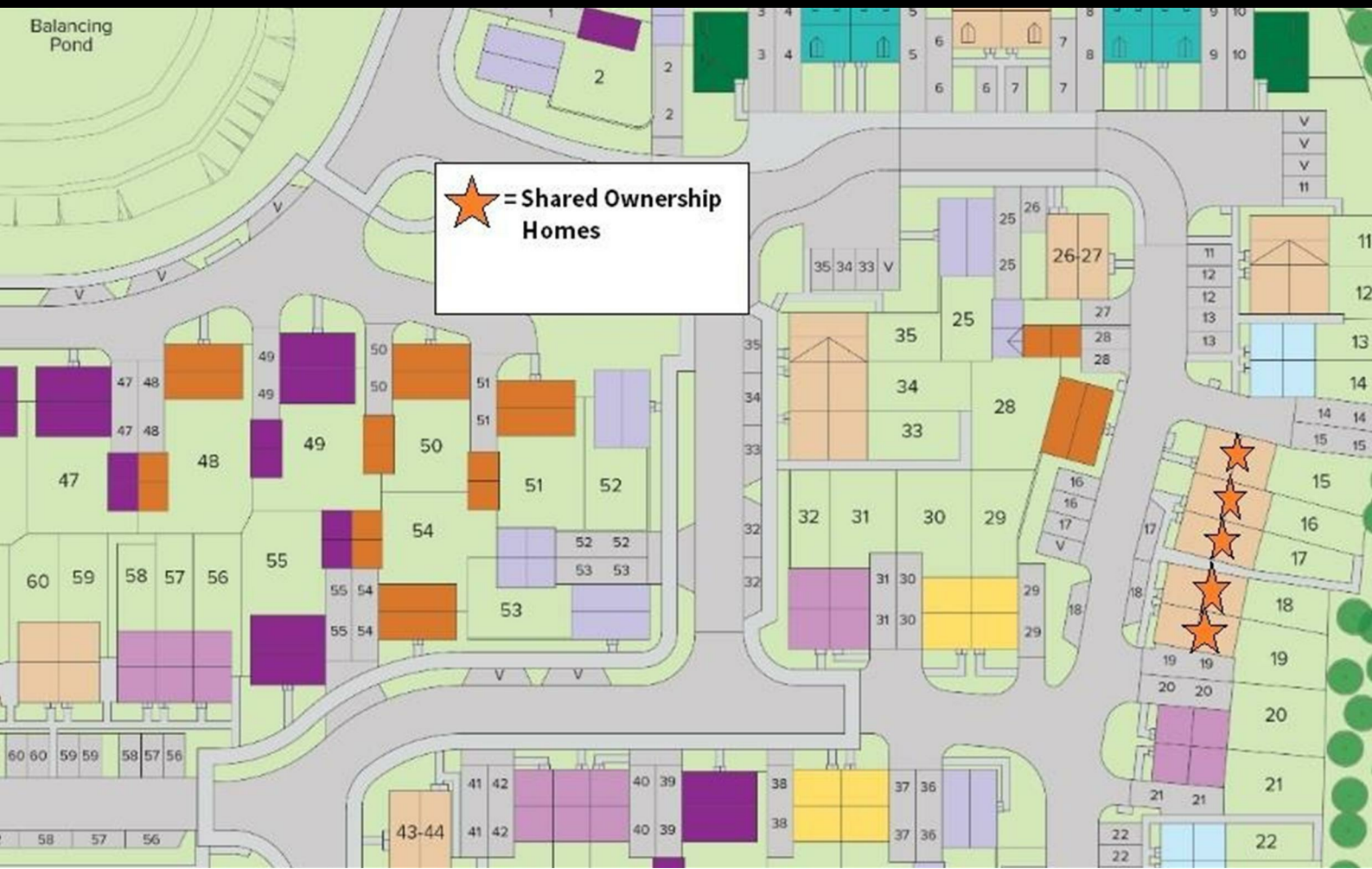
Plot 19 Sonnet Park "Haldon" 40% Share Total Rent £453.39 pcm

READY TO OCCUPY

This house type is 772 sq ft which is larger than the 2 bedroom Persimmon private homes available, "Alnmouth (643sq ft)" and the "Arden" (554 sq ft)

If you would like to apply for this property, please complete our online application form via our Signature Website

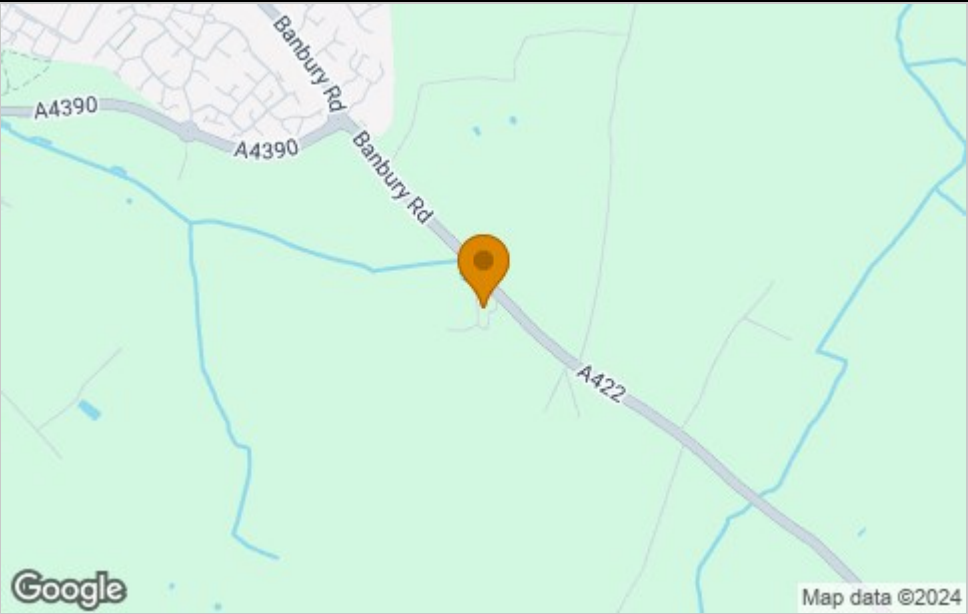
- Semi Detached
- Vinyl flooring to wet areas
- Turf to rear garden
- Oven, hob and extractor included
- New build
- 2 parking spaces
- Carpets fitted throughout
- 2 spacious bedrooms
- Good transport links - nr Warwick
- Downstairs cloakroom



Floor Plan



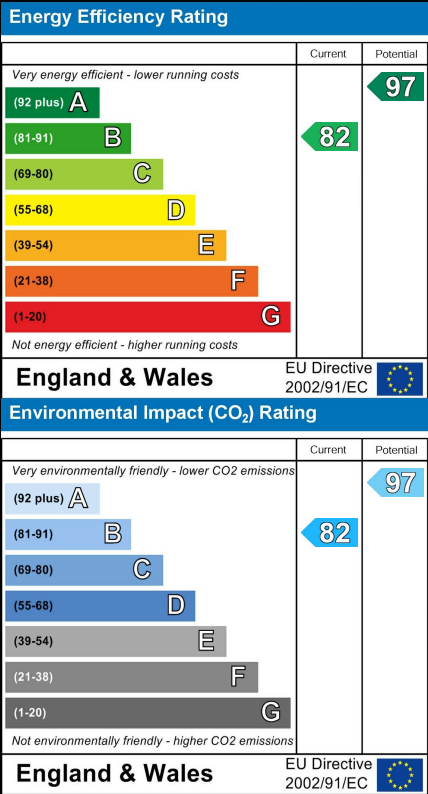
Area Map



Viewing

Please contact our Sales Advisor Sara on 07967 321165 if you wish to arrange a viewing appointment for this property or require further information.

Energy Efficiency Graph



These particulars, whilst believed to be accurate are set out as a general outline only for guidance and do not constitute any part of an offer or contract. Intending purchasers should not rely on them as statements of representation of fact, but must satisfy themselves by inspection or otherwise as to their accuracy. No person in this firms employment has the authority to make or give any representation or warranty in respect of the property.

4040 Lakeside, Solihull, West Midlands, B37 7YN  
Email: [sales@citizenhousing.org.uk](mailto:sales@citizenhousing.org.uk) or visit [www.citizenhousing.org.uk](http://www.citizenhousing.org.uk)



