



CITIZEN



## Plot 16 Sonnet Park "Haldon" 40% Share

33 Windhover Road, Stratford-Upon-Avon, CV37 7HT

**40% Shared ownership £127,100**



# Plot 16 Sonnet Park "Haldon" 40% Share



## Description

Plot 16 Sonnet Park "Haldon" 40% Share Total Rent £486.50 pcm

READY TO OCCUPY

If you would like to apply for this property, please complete our online application form via our Signature Website

- Mid terrace
- Vinyl flooring to wet areas
- Turf to rear garden
- near Warwick
- New build
- 2 parking spaces
- Oven, hob and extractor included
- 2 spacious bedrooms
- Good transport links
- Downstairs cloakroom

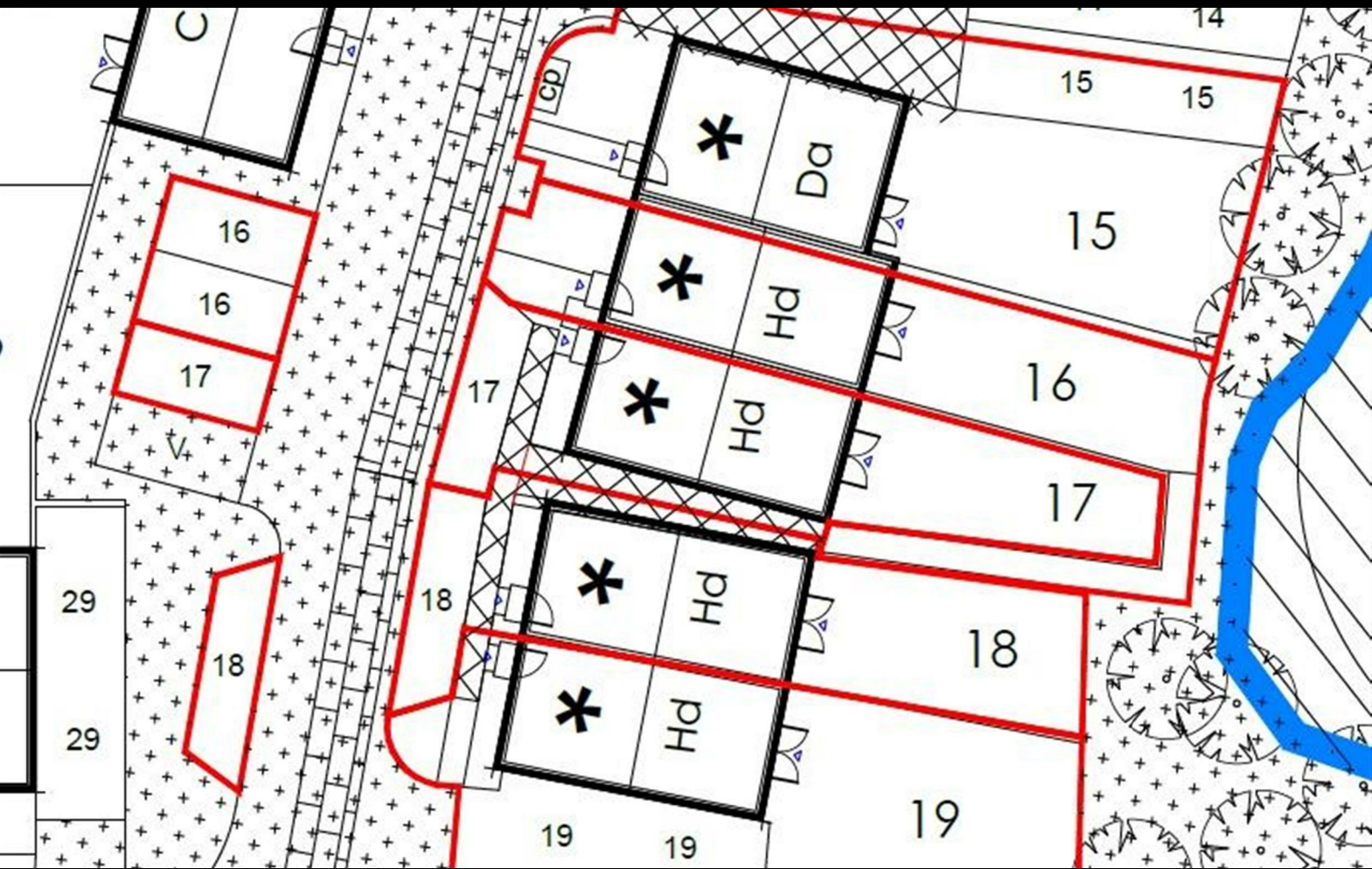


**House of the month offers  
at Sonnet Park, Stratford Upon Avon**

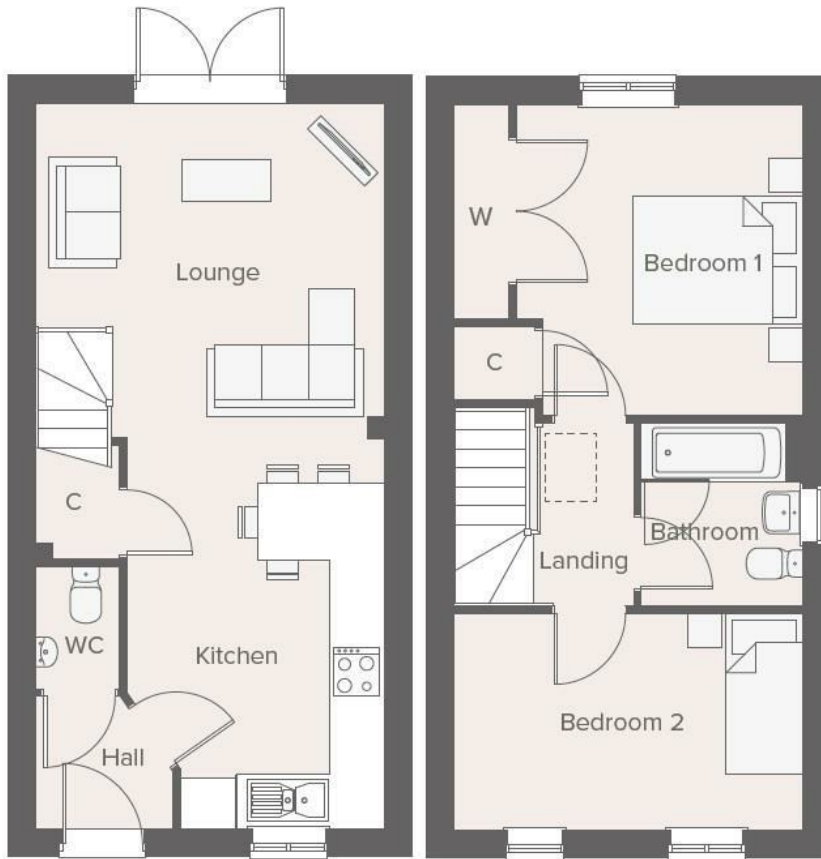


**\*£1,000  
towards  
legal fees**

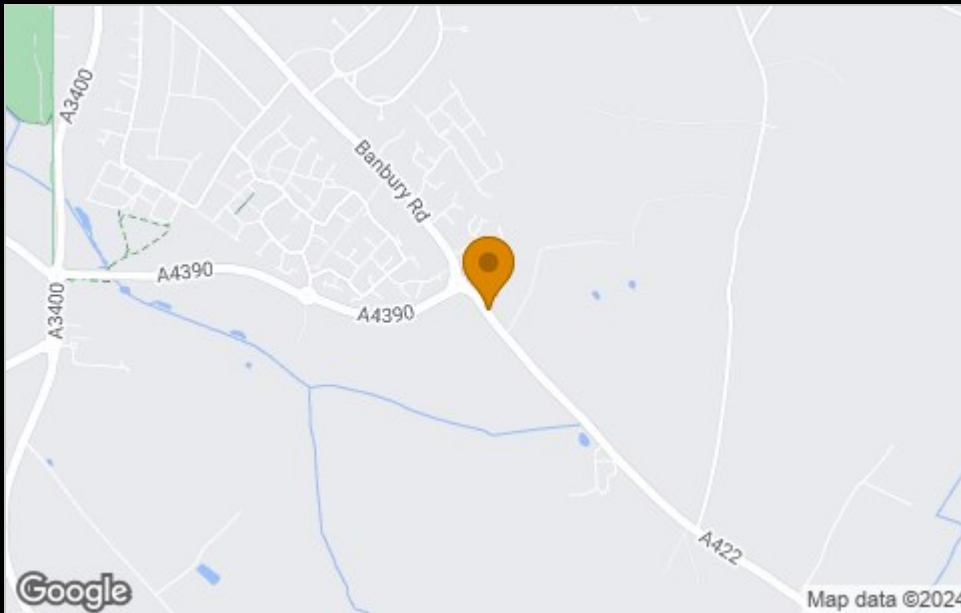
**\*£1,000  
Amazon  
voucher**



## Floor Plan



## Area Map



## Viewing

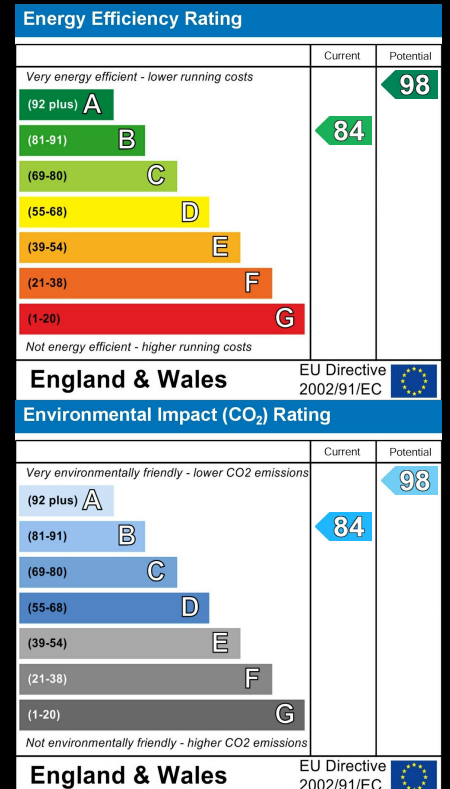
Please contact our Citizen-Sonnet Park-S U A Office on 07790 336902 if you wish to arrange a viewing appointment for this property or require further information.

These particulars, whilst believed to be accurate are set out as a general outline only for guidance and do not constitute any part of an offer or contract. Intending purchasers should not rely on them as statements of representation of fact, but must satisfy themselves by inspection or otherwise as to their accuracy. No person in this firm's employment has the authority to make or give any representation or warranty in respect of the property.

4040 Lakeside, Solihull, West Midlands, B37 7YN

Email: [sales@citizenhousing.org.uk](mailto:sales@citizenhousing.org.uk) or visit [www.citizenhousing.org.uk](http://www.citizenhousing.org.uk)

## Energy Efficiency Graph





CITIZEN



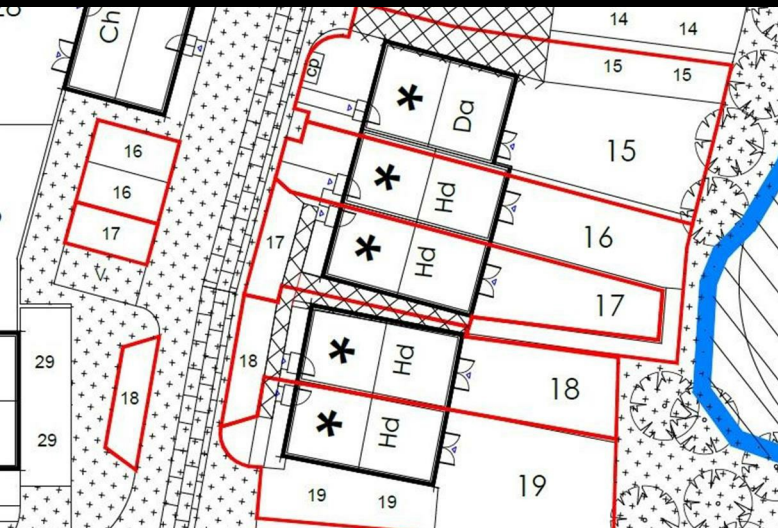
## Plot 17 Sonnet Park "Haldon" 40% Share

35 Windhover Road, Stratford-Upon-Avon, CV37 7FY

**40% Shared ownership £128,100**



# Plot 17 Sonnet Park "Haldon" 40% Share



## Description

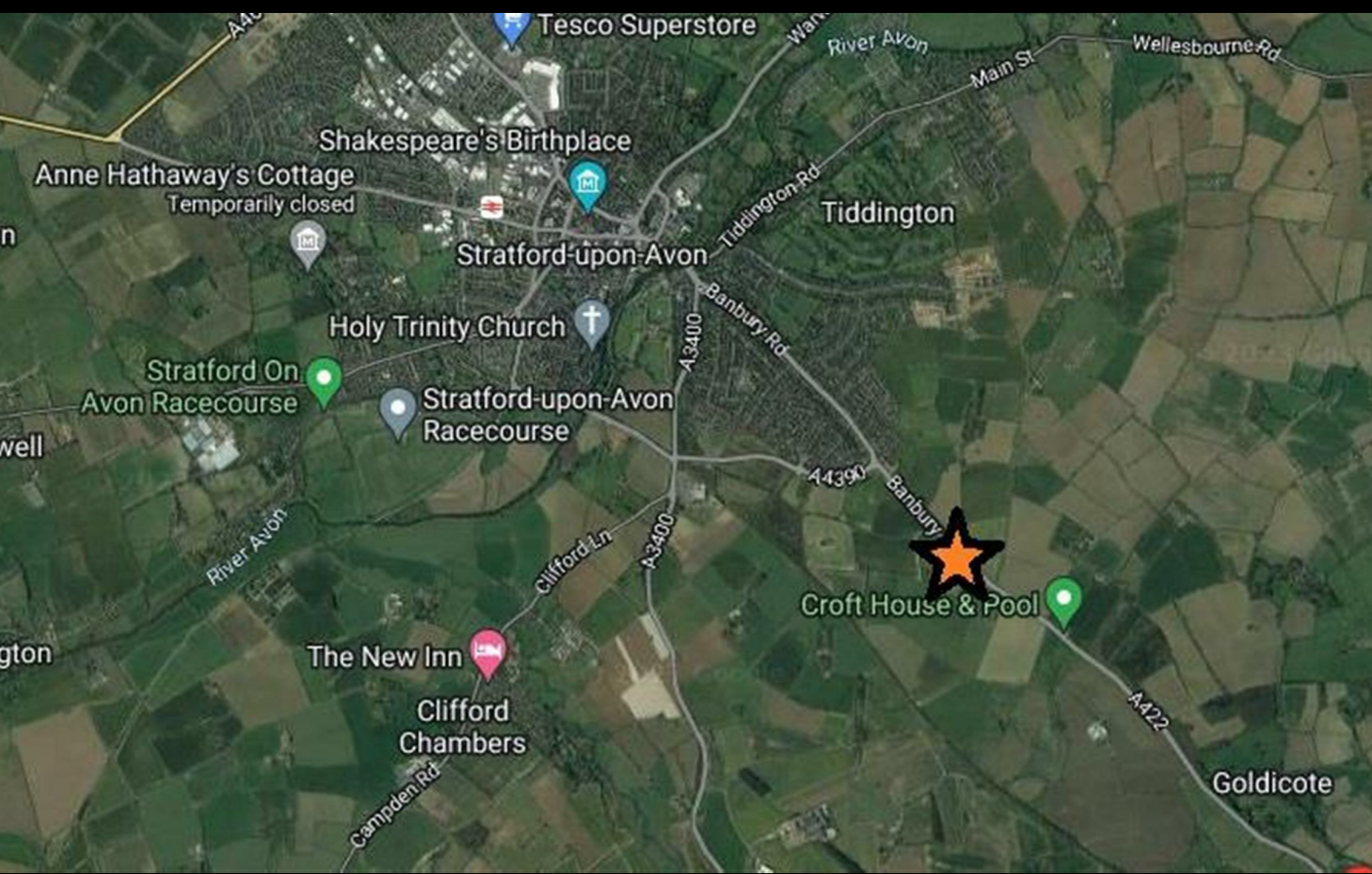
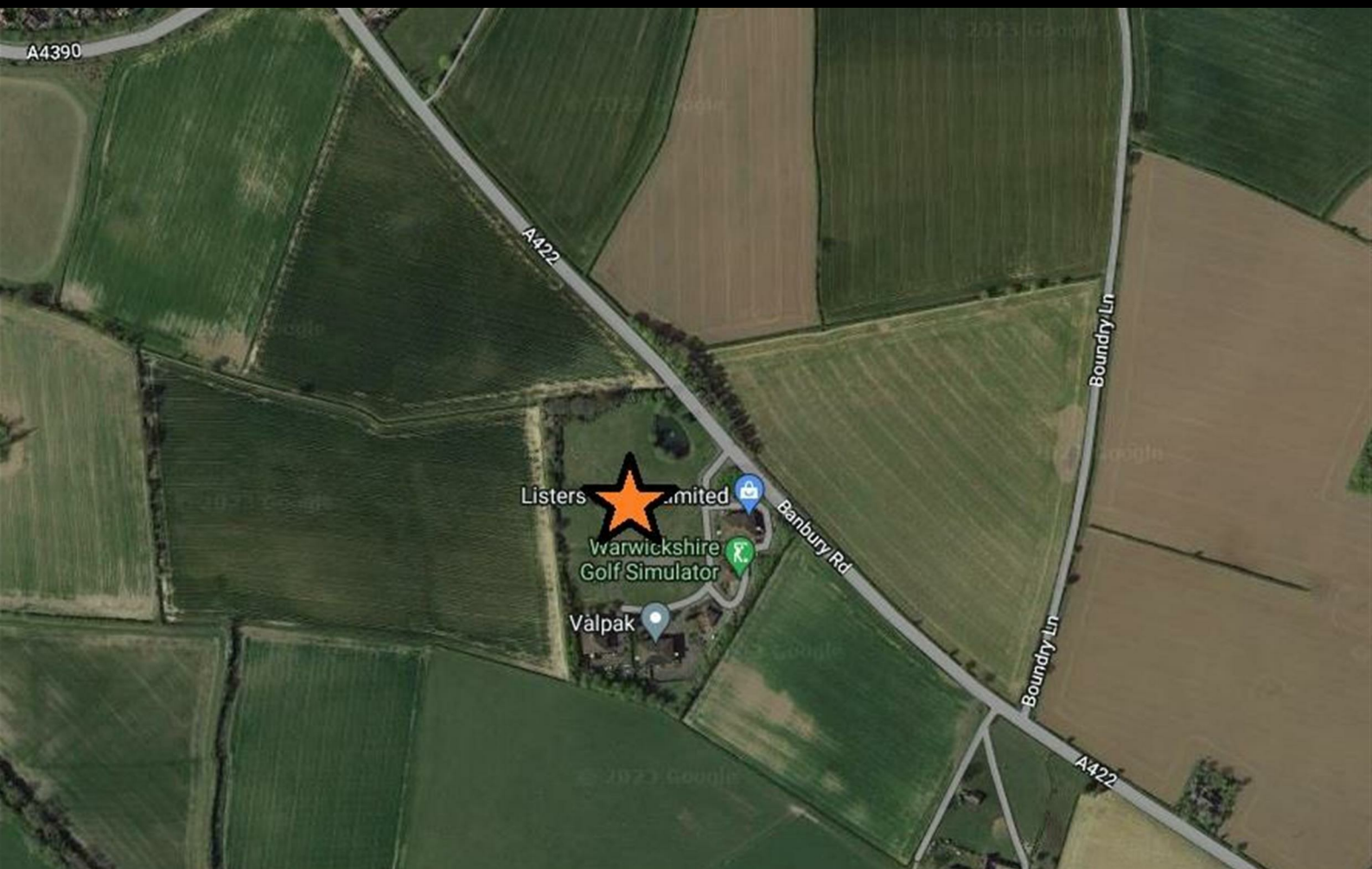
Plot 17 Sonnet Park "Haldon" 40% Share Total Rent £489.94 pcm

READY TO OCCUPY

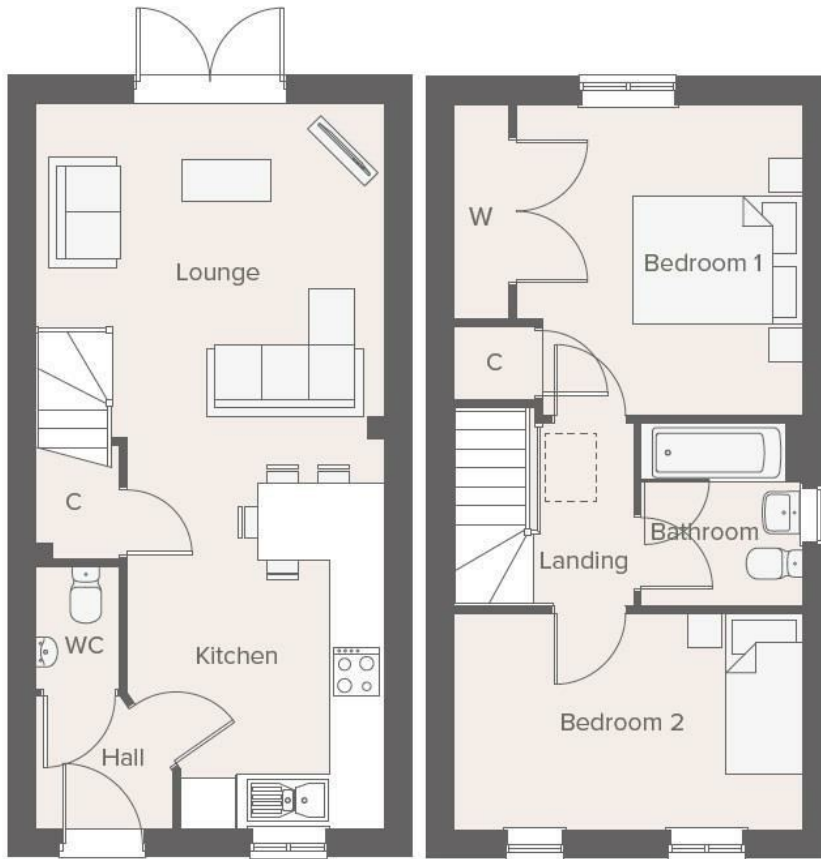
If you would like to apply for this property, please complete our online application form via our Signature Website

- End terrace
- Vinyl flooring to wet areas
- Turf to rear garden
- near Warwick
- New build
- 2 parking spaces
- Oven, hob and extractor included
- 2 spacious bedrooms
- Good transport links
- Downstairs cloakroom

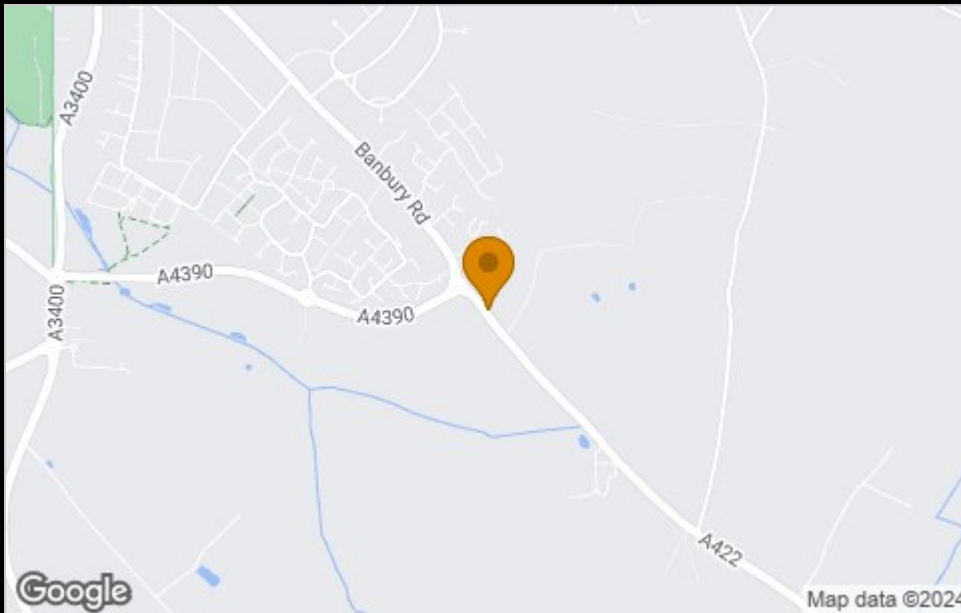




## Floor Plan



## Area Map



## Viewing



Please contact our Citizen-Sonnet Park-S U A Office on 07790336902 if you wish to arrange a viewing appointment for this property

These particulars, whilst believed to be accurate are set out as a general outline only for guidance and do not constitute any part of an offer or contract. Intending purchasers should not rely on them as statements of representation of fact, but must satisfy themselves by inspection or otherwise as to their accuracy. No person in this firm's employment has the authority to make or give any representation or warranty in respect of the property.

4040 Lakeside, Solihull, West Midlands, B37 7YN

Email: [sales@citizenhousing.org.uk](mailto:sales@citizenhousing.org.uk) or visit [www.citizenhousing.org.uk](http://www.citizenhousing.org.uk)

## Energy Efficiency Graph

Energy Efficiency Rating		Current	Potential
Very energy efficient - lower running costs			
(92 plus) <b>A</b>			
(81-91) <b>B</b>			
(69-80) <b>C</b>			
(55-68) <b>D</b>			
(39-54) <b>E</b>			
(21-38) <b>F</b>			
(1-20) <b>G</b>			
Not energy efficient - higher running costs			
<b>England &amp; Wales</b>		EU Directive 2002/91/EC 	
Environmental Impact (CO <sub>2</sub> ) Rating		Current	Potential
Very environmentally friendly - lower CO <sub>2</sub> emissions			
(92 plus) <b>A</b>			
(81-91) <b>B</b>			
(69-80) <b>C</b>			
(55-68) <b>D</b>			
(39-54) <b>E</b>			
(21-38) <b>F</b>			
(1-20) <b>G</b>			
Not environmentally friendly - higher CO <sub>2</sub> emissions			
<b>England &amp; Wales</b>		EU Directive 2002/91/EC 	





CITIZEN



## Plot 18 Sonnet Park "Haldon" 40% Share

37 Windhover Road, Stratford-Upon-Avon, CV37 7FY

**40% Shared ownership £129,150**



# Plot 18 Sonnet Park "Haldon" 40% Share



## Description

Plot 18 Sonnet Park "Haldon" 40% Share £129,150

Total Rent£493.55 pcm

READY TO OCCUPY

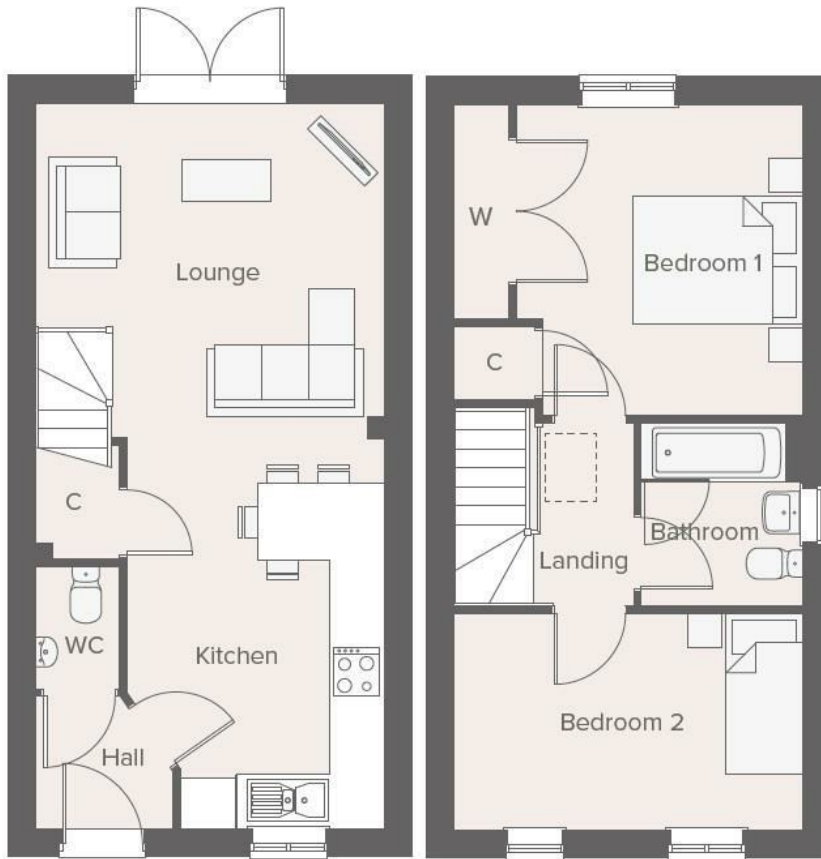
If you would like to apply for this property, please complete our online application form via our Signature Website

- Semi Detached
- Vinyl flooring to wet areas
- Turf to rear garden
- near Warwick
- New build
- 2 parking spaces
- Oven, hob and extractor included
- 2 spacious bedrooms
- Good transport links
- Downstairs clockroom

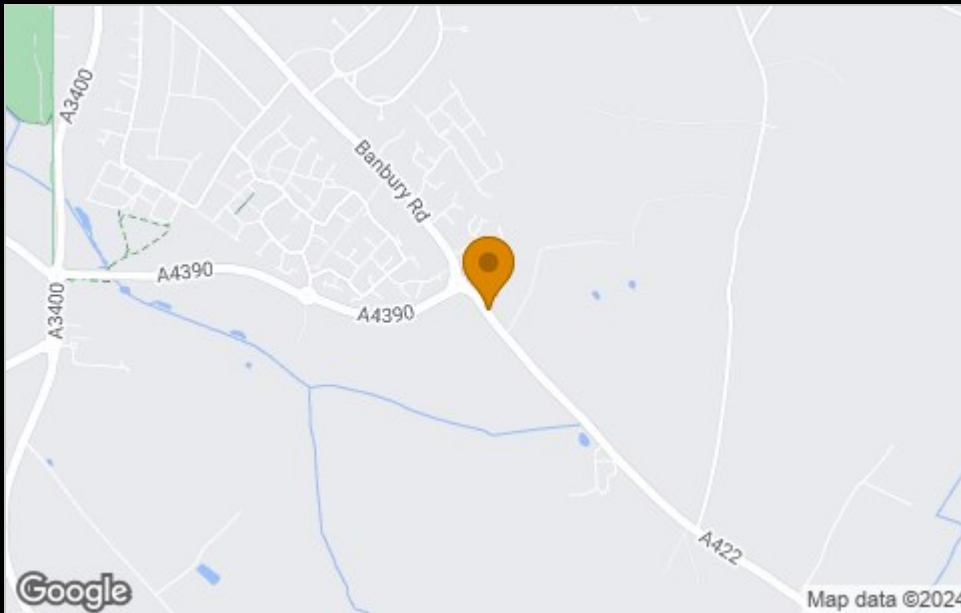




## Floor Plan



## Area Map



## Viewing

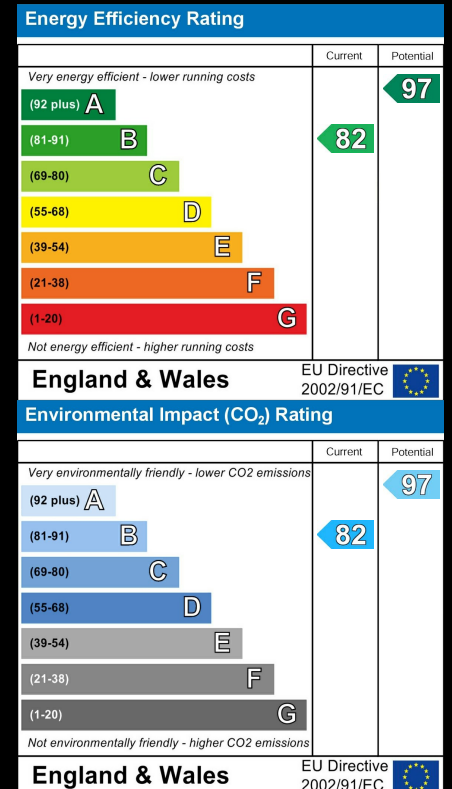
Please contact our Citizen-Sonnet Park-S U A Office on 07790336902 if you wish to arrange a viewing appointment for this property

These particulars, whilst believed to be accurate are set out as a general outline only for guidance and do not constitute any part of an offer or contract. Intending purchasers should not rely on them as statements of representation of fact, but must satisfy themselves by inspection or otherwise as to their accuracy. No person in this firm's employment has the authority to make or give any representation or warranty in respect of the property.

4040 Lakeside, Solihull, West Midlands, B37 7YN

Email: [sales@citizenhousing.org.uk](mailto:sales@citizenhousing.org.uk) or visit [www.citizenhousing.org.uk](http://www.citizenhousing.org.uk)

## Energy Efficiency Graph





CITIZEN



## Plot 19 Sonnet Park "Haldon" 40% Share

39 Windhover Road, Stratford-Upon-Avon, CV37 7FY

**40% Shared ownership £129,150**



# Plot 19 Sonnet Park "Haldon" 40% Share



## Description

Plot 19 Sonnet Park "Haldon" 40% Share Total Rent £493.55 pcm

READY TO OCCUPY

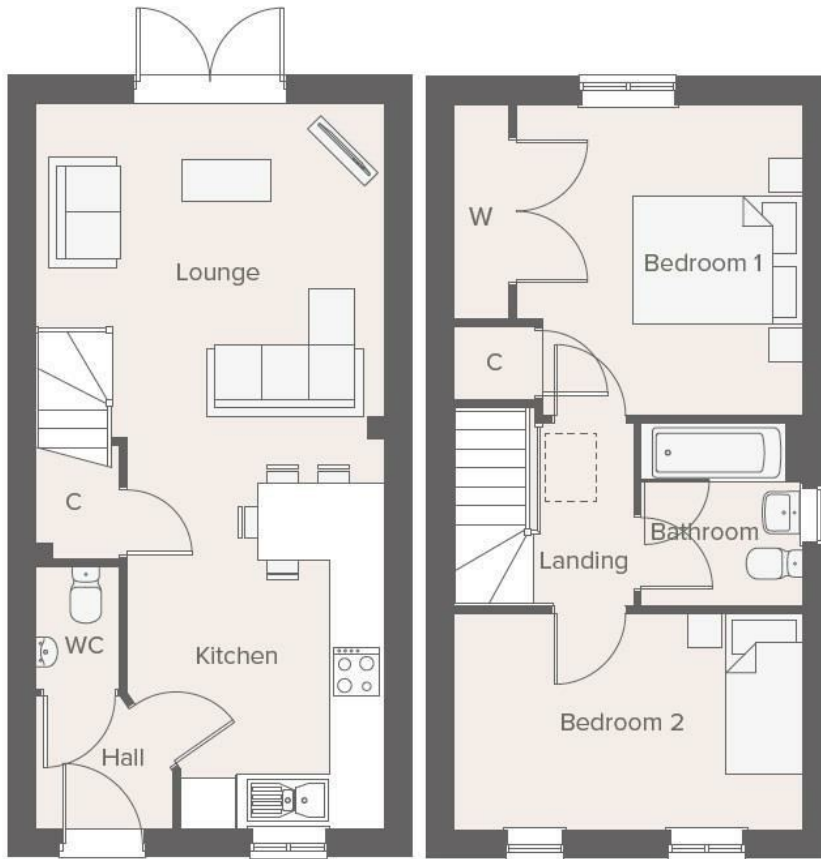
If you would like to apply for this property, please complete our online application form via our Signature Website

- Semi Detached
- Vinyl flooring to wet areas
- Turf to rear garden
- near Warwick
- New build
- 2 parking spaces
- Oven, hob and extractor included
- 2 spacious bedrooms
- Good transport links
- Downstairs cloakroom

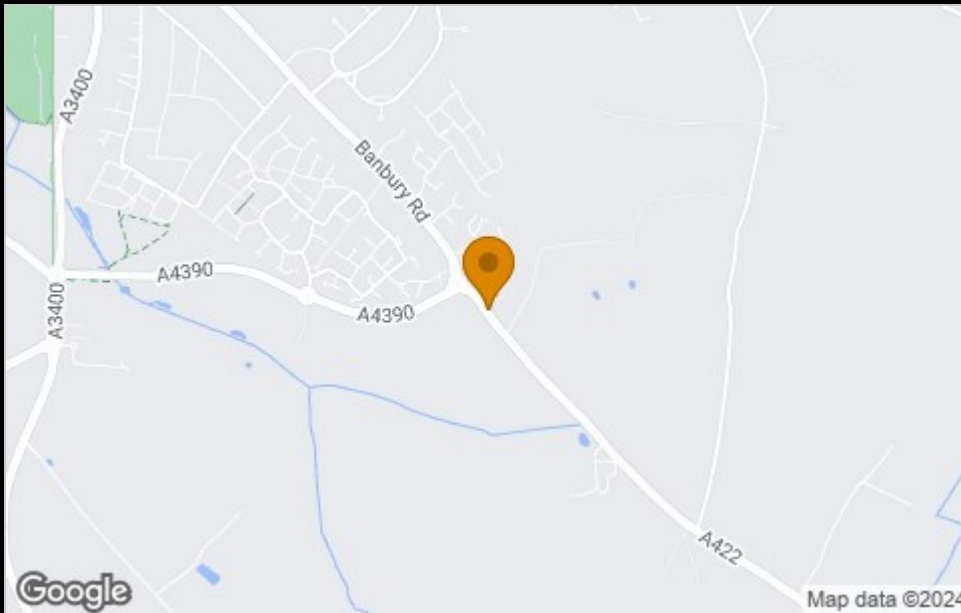




## Floor Plan



## Area Map



## Viewing

Please contact our Citizen-Sonnet Park-S U A Office on 07790336902 if you wish to arrange a viewing appointment for this property

These particulars, whilst believed to be accurate are set out as a general outline only for guidance and do not constitute any part of an offer or contract. Intending purchasers should not rely on them as statements of representation of fact, but must satisfy themselves by inspection or otherwise as to their accuracy. No person in this firm's employment has the authority to make or give any representation or warranty in respect of the property.

4040 Lakeside, Solihull, West Midlands, B37 7YN

Email: [sales@citizenhousing.org.uk](mailto:sales@citizenhousing.org.uk) or visit [www.citizenhousing.org.uk](http://www.citizenhousing.org.uk)

## Energy Efficiency Graph

