



CITIZEN



## Plot 1 - The Coppice Ph2 - 35% Share

Off Wyson Lane, Brimfield, SY8 4NH

**35% Shared ownership £94,465**



# Plot 1 - The Coppice Ph2 - 35% Share



## Description

Plot 1 The Coppice Ph2 - 35% share £94,465 purchase price

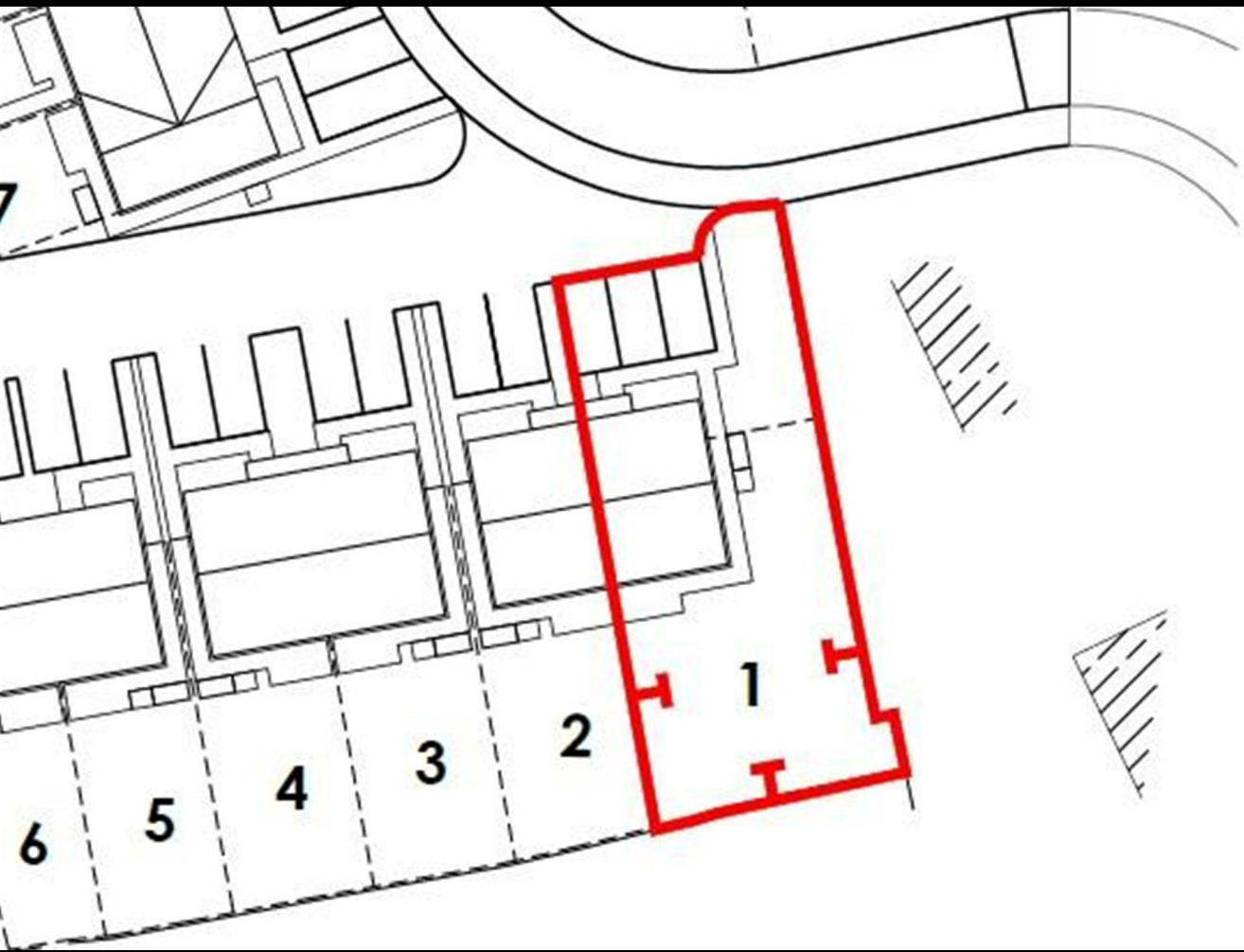
Total Rent £460.58 pcm

Please note there is an 80% staircasing restriction on these homes.

All images/photographs are for illustrative purposes only

- Semi Detached
- Fitted kitchen with oven hob & extractor
- near Ludlow
- Turf to rear garden
- UPVc double glazing
- New Build
- Vinyl flooring to wet areas & extractor
- Downstairs cloakroom
- 2 parking spaces







CITIZEN



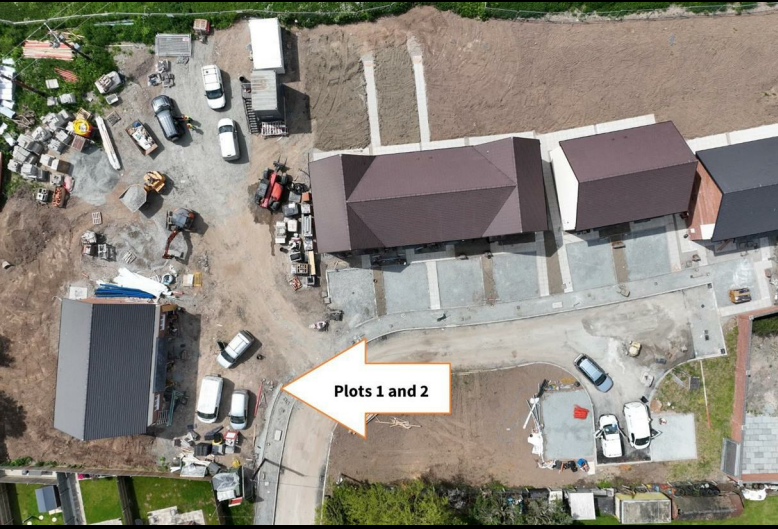
## Plot 2 - The Coppice Ph2 - 35% Share

Off Wyson Lane, Brimfield, SY8 4NH

**35% Shared ownership £94,465**



# Plot 2 - The Coppice Ph2 - 35% Share



## Description

Plot 2 The Coppice Ph2 - 35% share £94,465 purchase price

Total Rent £460.58 pcm

Please note there is an 80% staircasing restriction on these homes.

AVAILABLE NOW

All images/photographs are for illustrative purposes only

- Semi Detached
- Fitted kitchen with oven hob & extractor
- near Ludlow
- Turf to rear garden
- UPvc double glazing
- New Build
- Vinyl flooring to wet areas
- Downstairs cloakroom
- 2 parking spaces







CITIZEN

For illustration only, plots shown are 1  
refer to Sales Advisor for render clarity

4



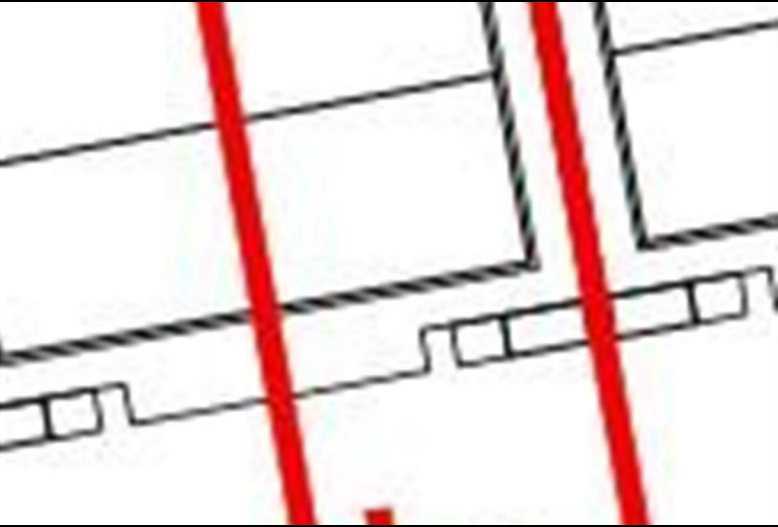
## Plot 3 - The Coppice Ph2 - 35% Share

Off Wyson Lane, Brimfield, SY8 4NH

**35% Shared ownership £94,465**



# Plot 3 - The Coppice Ph2 - 35% Share



## Description

Plot 3 The Coppice Ph2 - 35% share £94,465 purchase price

Total Rent £460.58 pcm

Please note there is an 80% staircasing restriction on these homes.

AVAILABLE NOW

All images/photographs are for illustrative purposes only

- Semi Detached
- Fitted kitchen with oven hob & extractor
- near Ludlow
- Turf to rear garden
- UPvc double glazing
- New Build
- Vinyl flooring to wet areas
- Downstairs cloakroom
- 2 parking spaces







CITIZEN

For illustration only, plots shown are 1  
refer to Sales Advisor for render clarity

4



## Plot 4 - The Coppice Ph2 - 35% Share

Off Wyson Lane, Brimfield, SY8 4NH

**35% Shared ownership £94,465**



# Plot 4 - The Coppice Ph2 - 35% Share



## Description

Plot 4 The Coppice Ph2 - 35% share £94,465 purchase price

Total Rent £460.58pcm

Please note there is an 80% staircasing restriction on these homes.

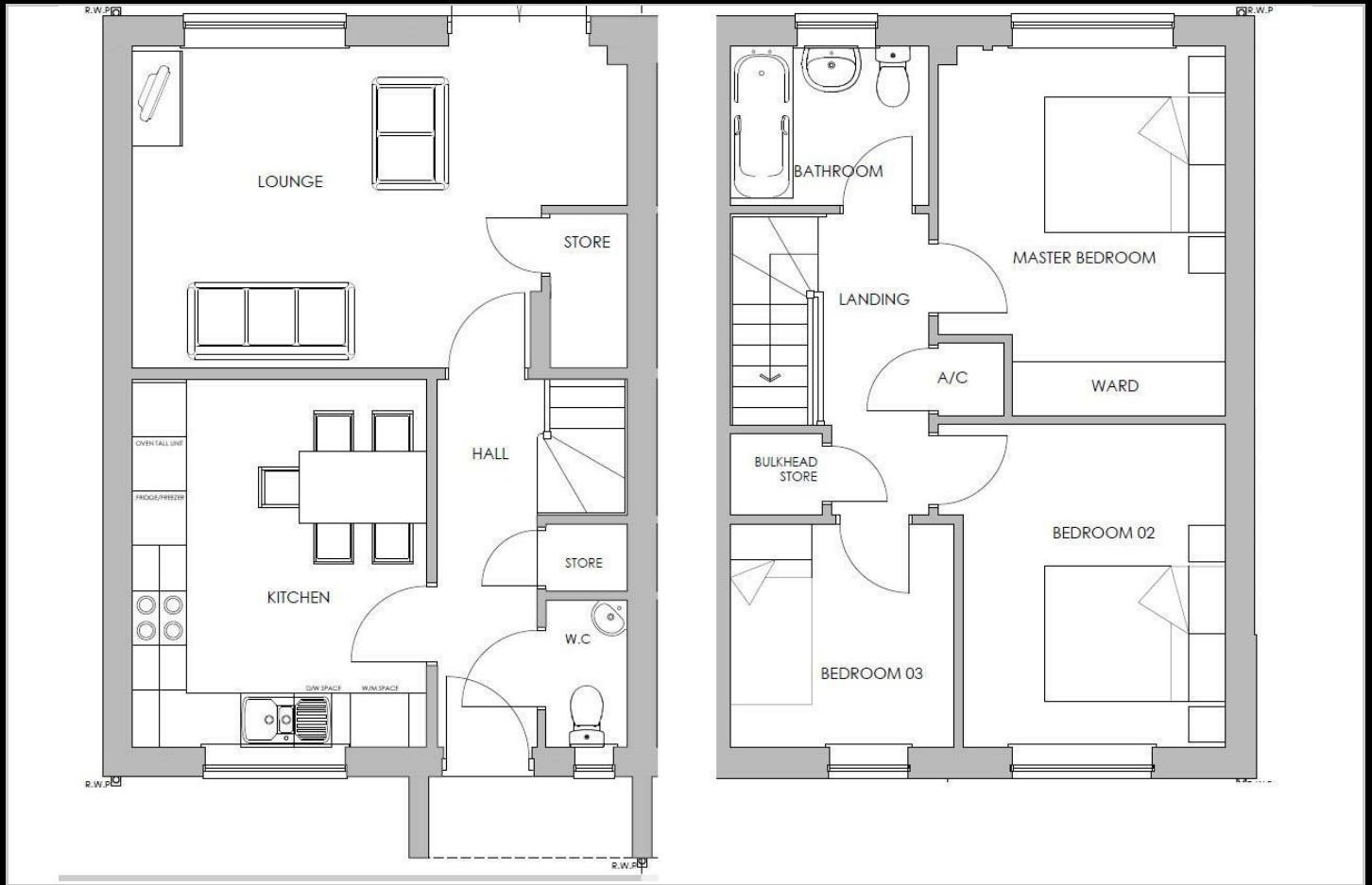
AVAILABLE NOW

All images/photographs are for illustrative purposes only

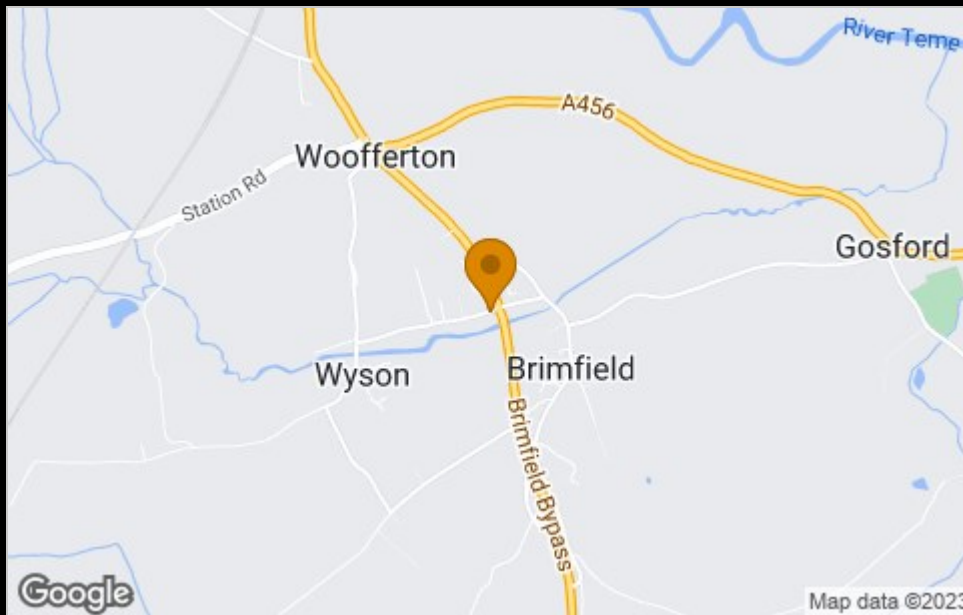
- Semi Detached
- Fitted kitchen with oven hob & extractor
- near Ludlow
- Turf to rear garden
- UPVc double glazing
- New Build
- Vinyl flooring to wet areas & extractor
- Downstairs cloakroom
- 2 parking spaces



## Floor Plan



## Area Map



## Viewing

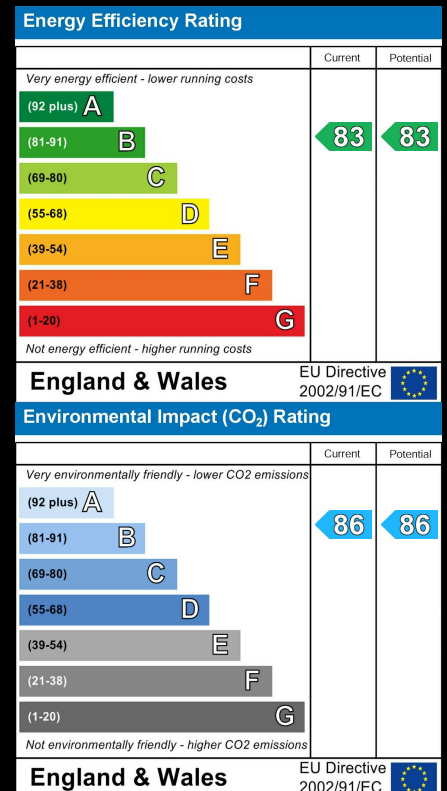
Please contact our Citizen-The Coppice, Shropshire Office on 07971-576-882 if you wish to arrange a viewing appointment for this property

These particulars, whilst believed to be accurate are set out as a general outline only for guidance and do not constitute any part of an offer or contract. Intending purchasers should not rely on them as statements of representation of fact, but must satisfy themselves by inspection or otherwise as to their accuracy. No person in this firm's employment has the authority to make or give any representation or warranty in respect of the property.

4040 Lakeside, Solihull, West Midlands, B37 7YN

Email: [sales@citizenhousing.org.uk](mailto:sales@citizenhousing.org.uk) or visit [www.citizenhousing.org.uk](http://www.citizenhousing.org.uk)

## Energy Efficiency Graph





**CITIZEN**

For illustration only, plots  
pictured 11 & 12, please  
refer to Sales Advisor on  
clarity of render for plots 5  
& 6



## Plot 5- The Coppice Ph2 - 40% Share

Off Wyson Lane, Brimfield, SY8 4NH

**40% Shared ownership £98,000**



# Plot 5- The Coppice Ph2 - 40% Share



## Description

Plot 5 The Coppice Ph2 40% Share Purchase price £98,000

Total Rent £393.78 pcm

Please note there is an 80% staircasing restriction on these homes.

AVAILABLE TO RESERVE NOW

All images/photographs are for illustrative purposes only

- New build
- 2 parking spaces
- Fitted kitchen with oven, hob & extractor
- 2 spacious bedrooms
- Semi detached
- Turf to rear garden
- Vinyl to wet areas
- UPVC double glazing
- downstairs cloakroom
- Near Ludlow





**CITIZEN**

For illustration only, plots  
pictured 11 & 12, please  
refer to Sales Advisor on  
clarity of render for plots 5  
& 6



## Plot 6- The Coppice Ph2 - 40% Share

Off Wyson Lane, Brimfield, SY8 4NH

**40% Shared ownership £98,000**



# Plot 6- The Coppice Ph2 - 40% Share



## Description

Plot 6 The Coppice Ph2 40% Share Purchase price £98,000

Total Rent £393.78 pcm

Please note there is an 80% staircasing restriction on these homes.

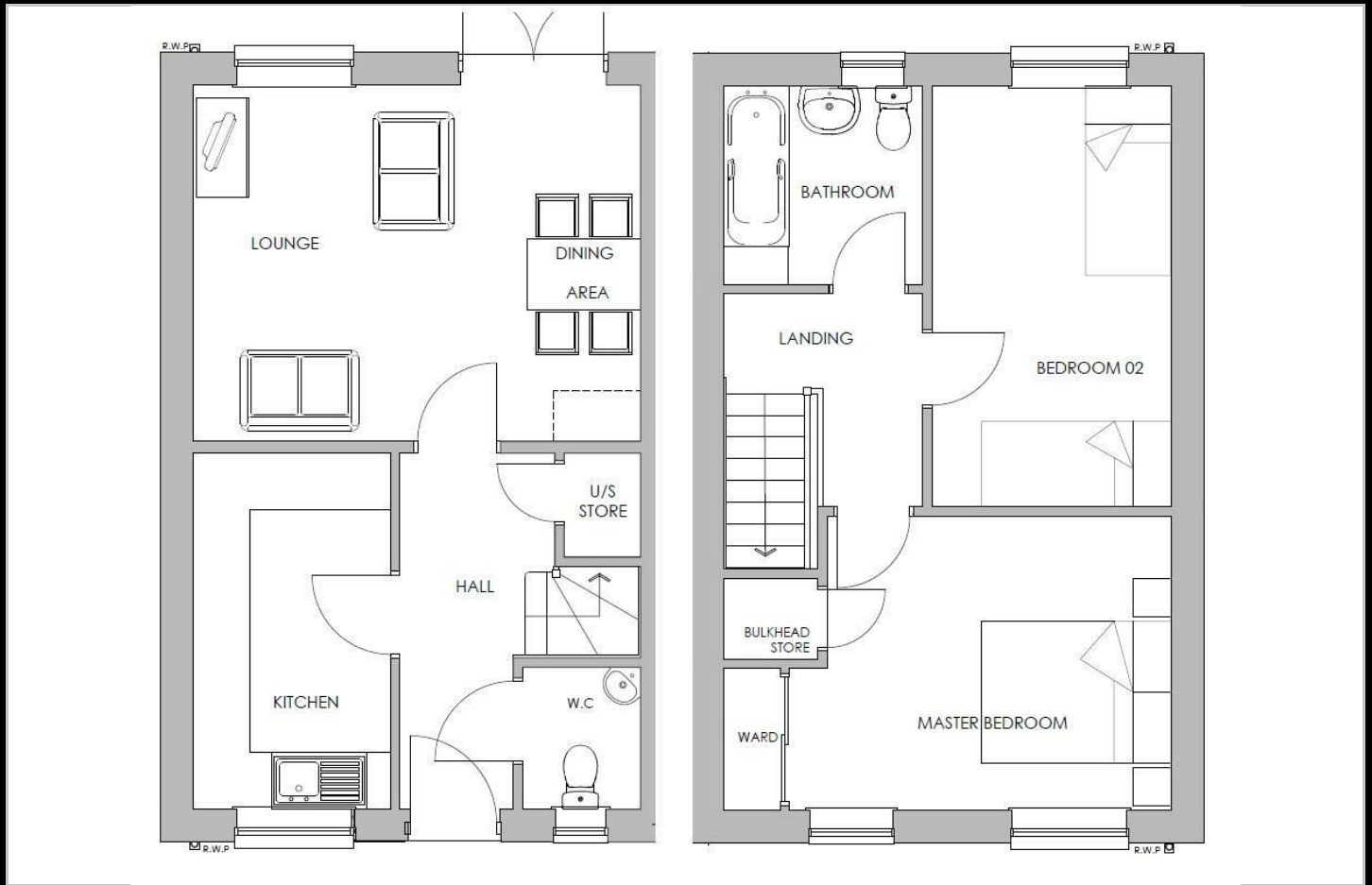
AVAILABLE TO RESERVE NOW

All images/photographs are for illustrative purposes only

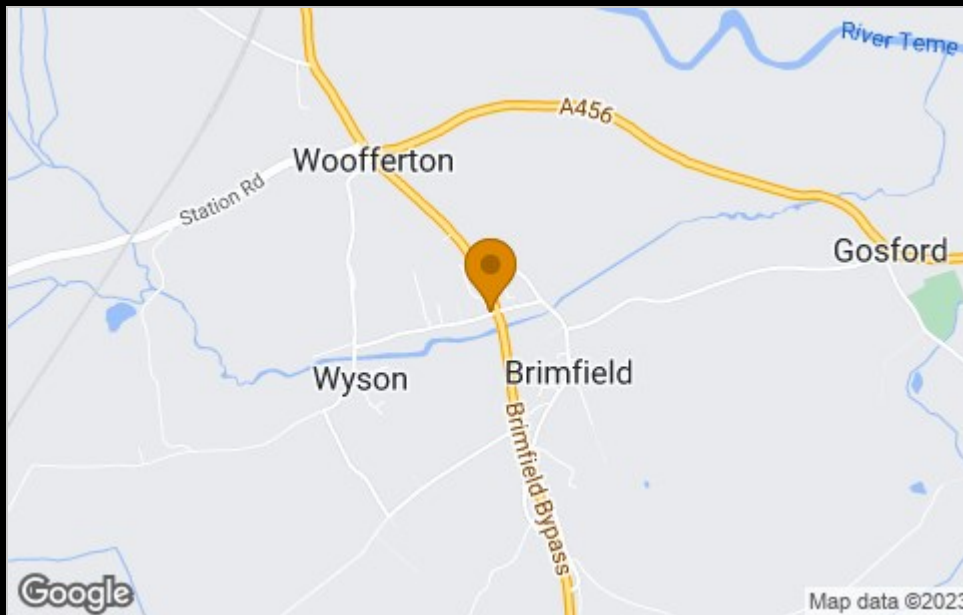
- New build
- 2 parking spaces
- Fitted kitchen with oven, hob & extractor
- 2 spacious bedrooms
- Semi detached
- Turf to rear garden
- Vinyl to wet areas
- UPVC double glazing
- downstairs cloakroom
- Near Ludlow



## Floor Plan



## Area Map



## Viewing

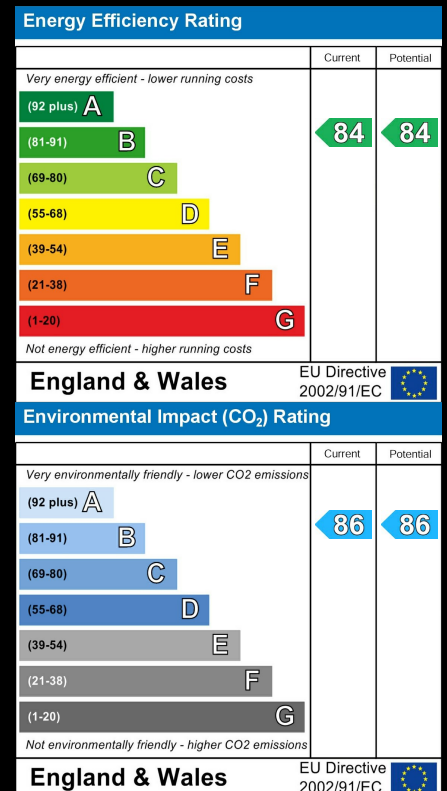
Please contact our Citizen-The Coppice, Shropshire Office on 07971-576-882 if you wish to arrange a viewing appointment for this property

These particulars, whilst believed to be accurate are set out as a general outline only for guidance and do not constitute any part of an offer or contract. Intending purchasers should not rely on them as statements of representation of fact, but must satisfy themselves by inspection or otherwise as to their accuracy. No person in this firm's employment has the authority to make or give any representation or warranty in respect of the property.

4040 Lakeside, Solihull, West Midlands, B37 7YN

Email: [sales@citizenhousing.org.uk](mailto:sales@citizenhousing.org.uk) or visit [www.citizenhousing.org.uk](http://www.citizenhousing.org.uk)

## Energy Efficiency Graph







CITIZEN



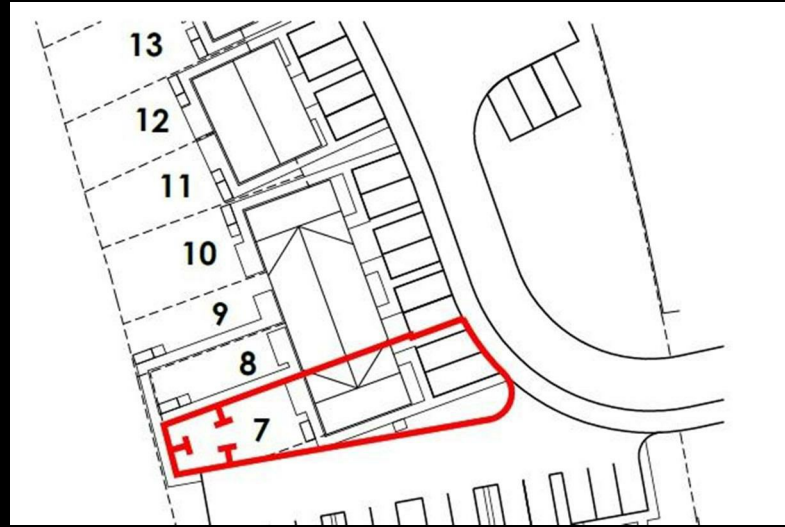
## Plot 7 The Coppice Ph2 - 35% Share

7 Kop Close, Wyson Lane, Brimfield, SY8 4FB

**35% Shared ownership £93,240**



# Plot 7 The Coppice Ph2 - 35% Share



## Description

Plot 7 The Coppice Ph2 - 35% share £93,240 purchase price

Total Rent £446.59 pcm

Please note there is an 80% staircasing restriction on these homes.

If you would like to apply for this property, please complete our online application form via our Signature Website

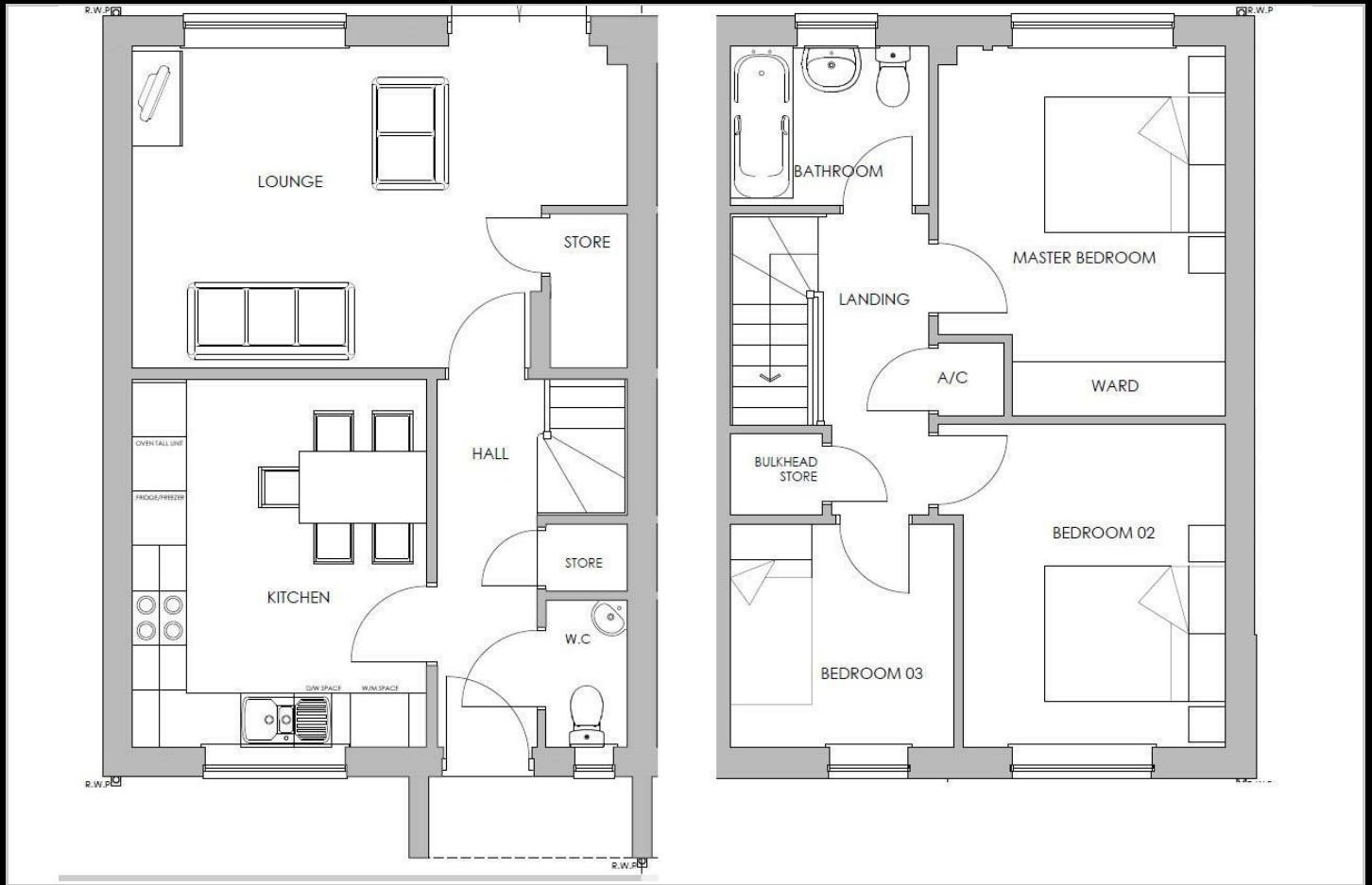
AVAILABLE TO RESERVE NOW

All images/photographs are for illustrative purposes only

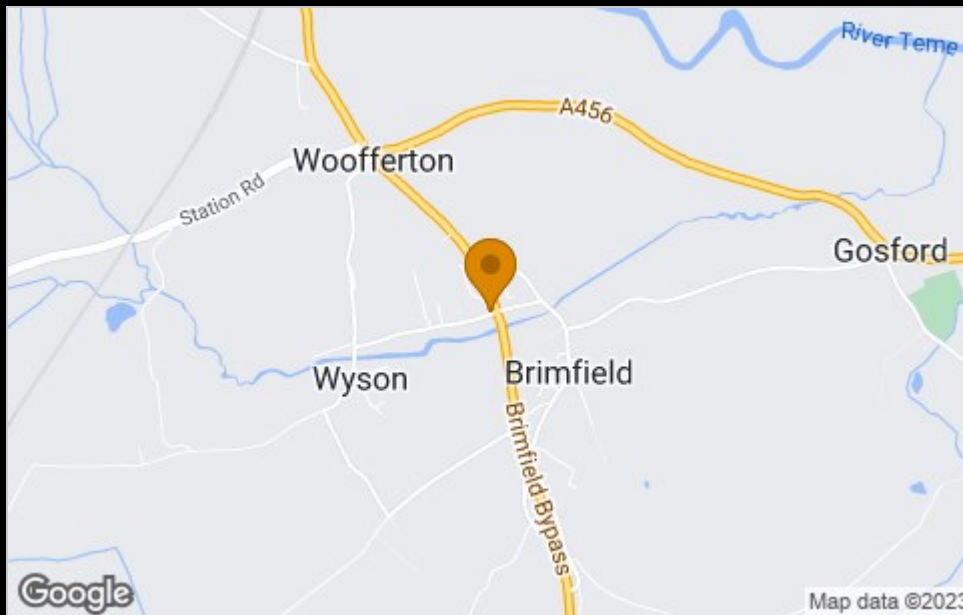
- End Terrace
- Fitted kitchen with oven hob & extractor
- near Ludlow
- Turf to rear garden
- UPVc double glazing
- New Build
- Vinyl flooring to wet areas
- Downstairs cloakroom
- 2 parking spaces



## Floor Plan



## Area Map



## Viewing

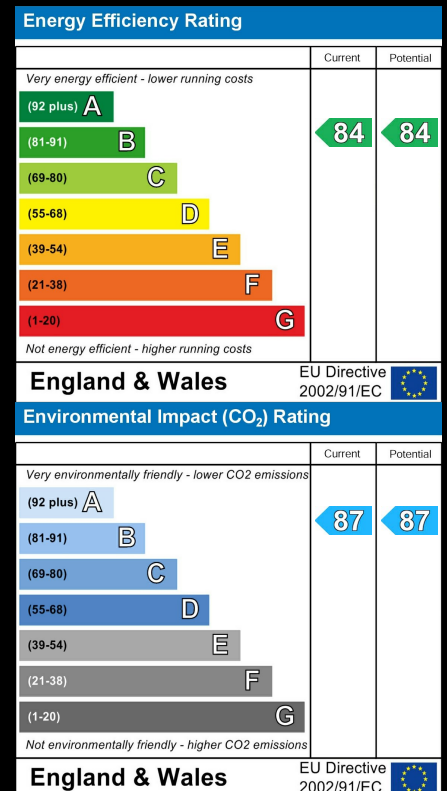
Please contact our Citizen-The Coppice, Shropshire Office on 07971-576-882 if you wish to arrange a viewing appointment for this property

These particulars, whilst believed to be accurate are set out as a general outline only for guidance and do not constitute any part of an offer or contract. Intending purchasers should not rely on them as statements of representation of fact, but must satisfy themselves by inspection or otherwise as to their accuracy. No person in this firm's employment has the authority to make or give any representation or warranty in respect of the property.

4040 Lakeside, Solihull, West Midlands, B37 7YN

Email: [sales@citizenhousing.org.uk](mailto:sales@citizenhousing.org.uk) or visit [www.citizenhousing.org.uk](http://www.citizenhousing.org.uk)

## Energy Efficiency Graph





CITIZEN



## Plot 8 - The Coppice Ph2 - 40% Share

8 Kop Close, Wyson Lane, Brimfield, SY8 4FB

**40% Shared ownership £96,600**



# Plot 8 - The Coppice Ph2 - 40% Share



## Description

Plot 8 The Coppice Ph2 - 40% share £96,600 purchase price  
Total Rent £388.97 pcm

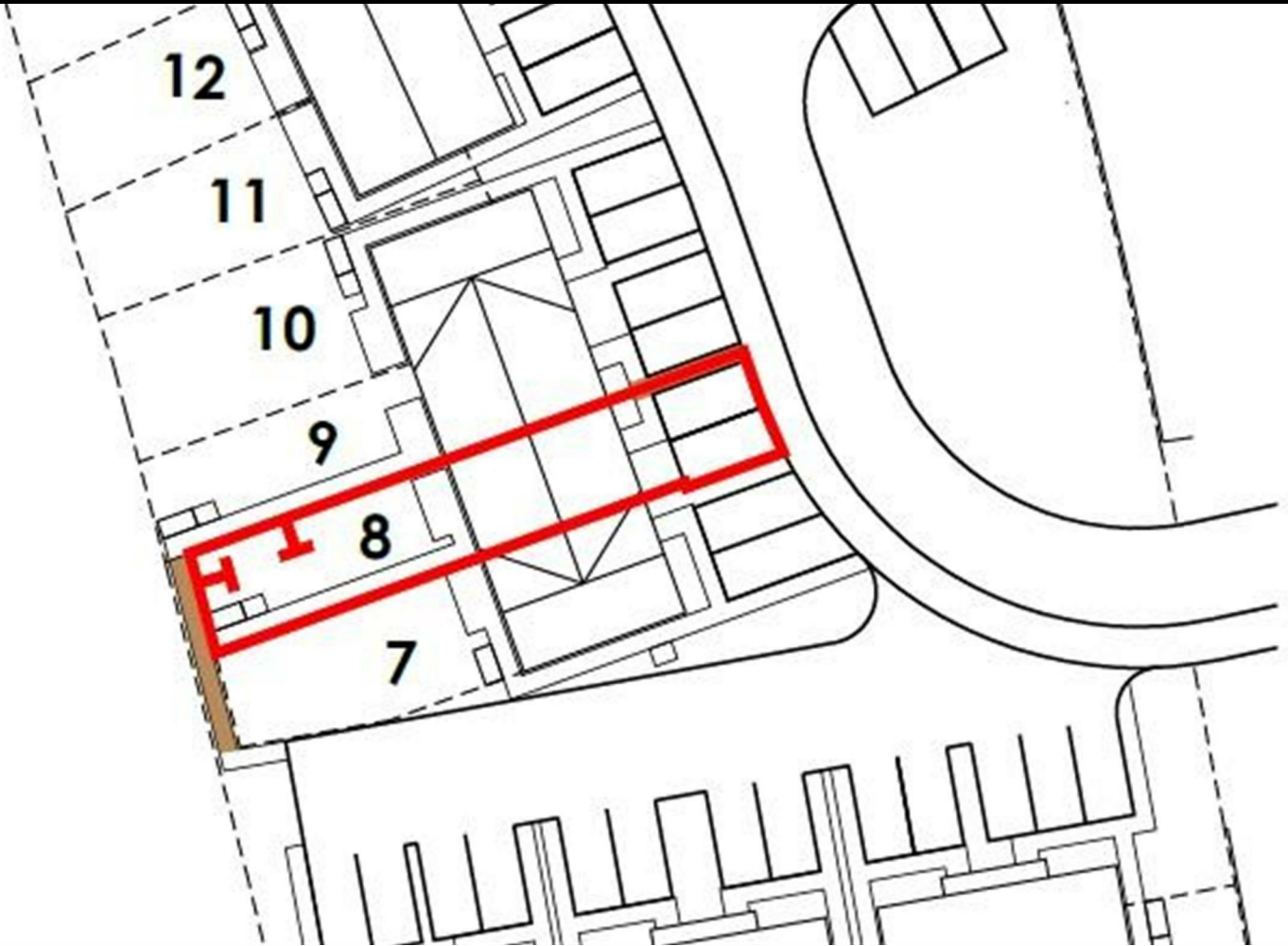
Please note there is an 80% staircasing restriction on these homes.

If you would like to apply for this property, please complete our online application form via our Signature Website

AVAILABLE NOW

All images/photographs are for illustrative purposes only

- End Terrace
- Fitted kitchen with oven hob & extractor
- near Ludlow
- Turf to rear garden
- UPVc double glazing
- New Build
- Vinyl flooring to wet areas
- Downstairs cloakroom
- 2 parking spaces





CITIZEN



## Plot 9 - The Coppice Ph2 - 40% Share

9 Kop Close, Wyson Lane, Brimfield, SY8 4FB

**40% Shared ownership £96,600**



# Plot 9 - The Coppice Ph2 - 40% Share



## Description

Plot 9 The Coppice Ph2 - 40% share £96,600 purchase price  
Total Rent £388.97 pcm

Please note there is an 80% staircasing restriction on these homes.

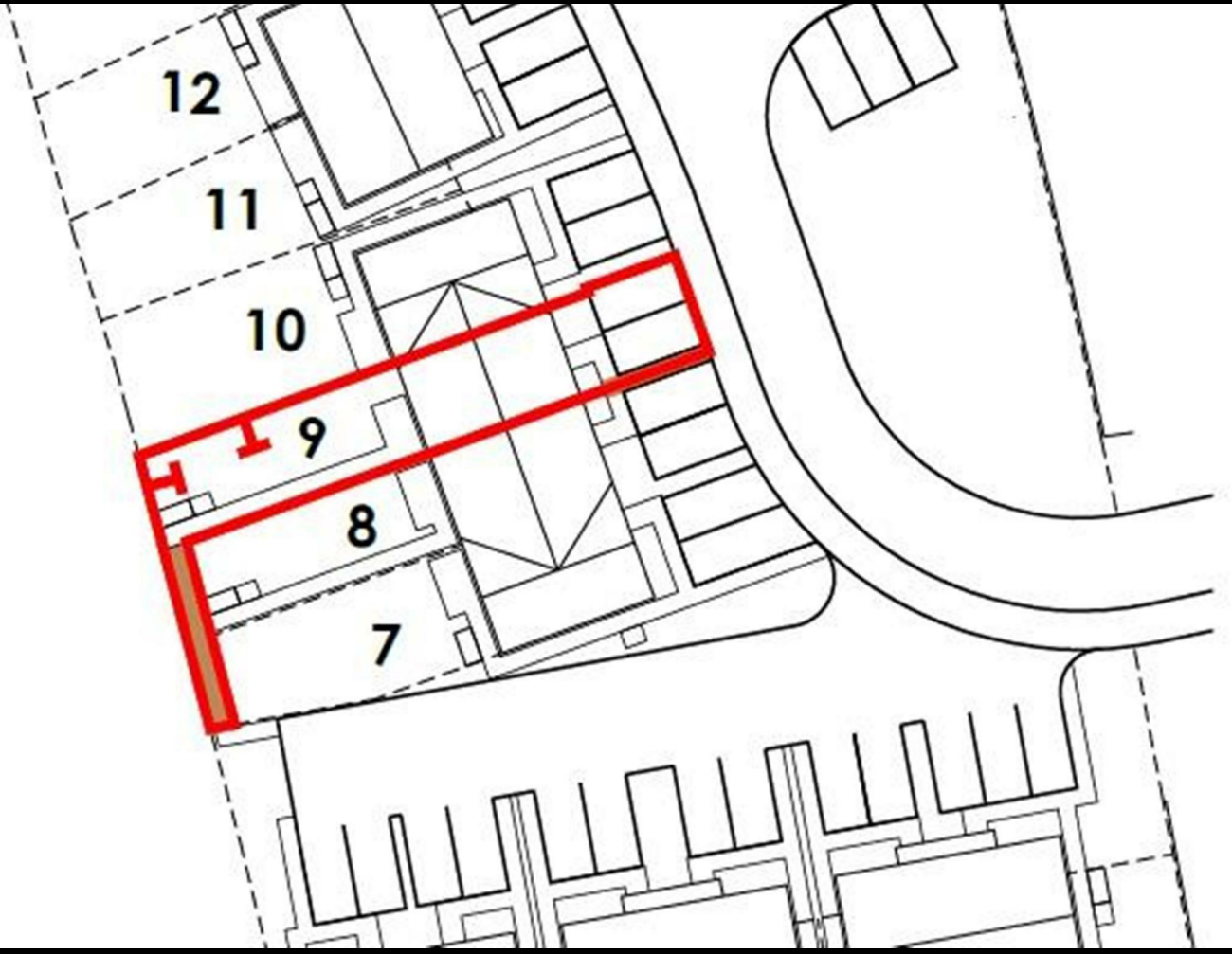
If you would like to apply for this property, please complete our online application form via our Signature Website

AVAILABLE NOW

All images/photographs are for illustrative purposes only

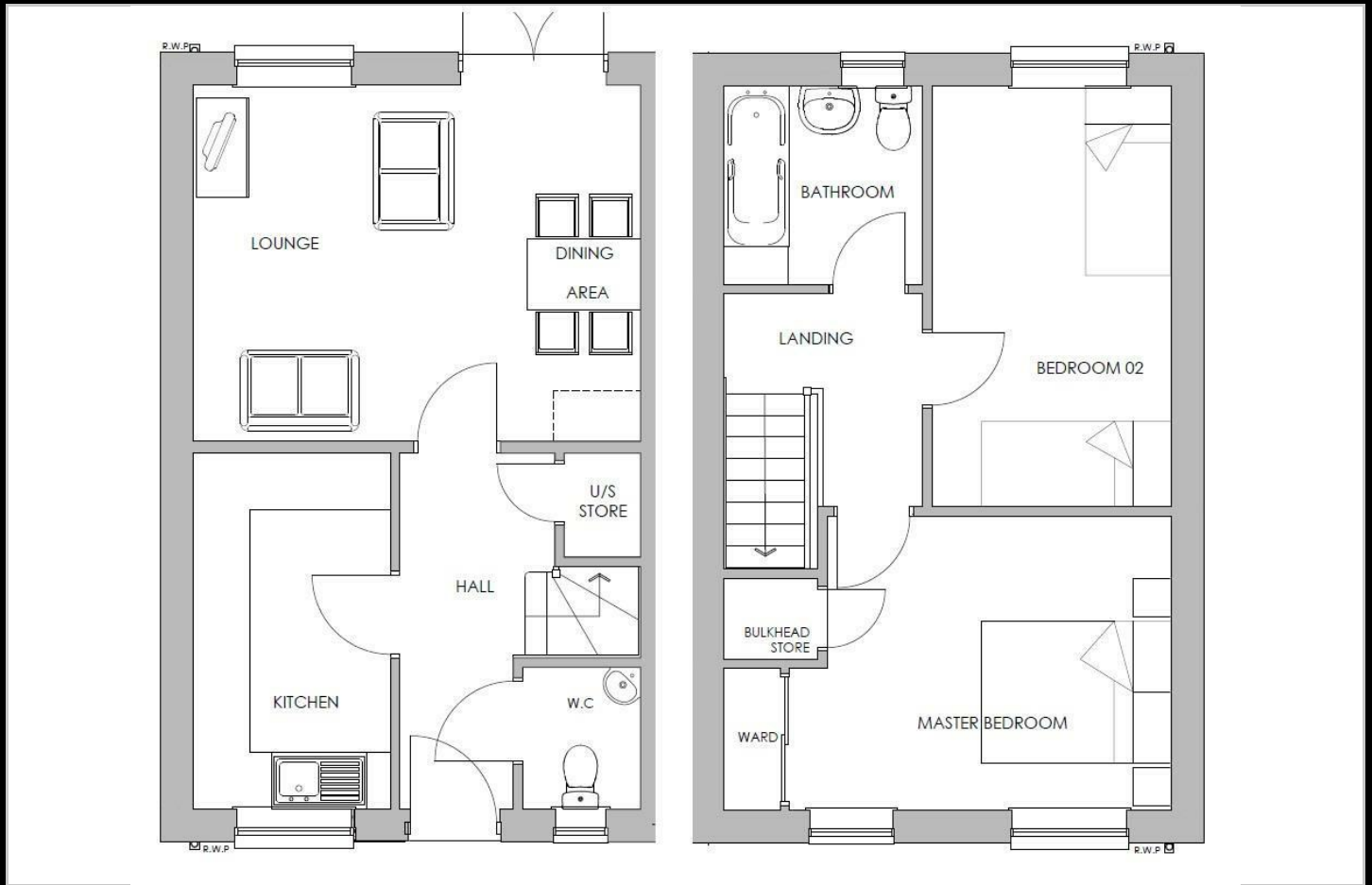
- End Terrace
- Fitted kitchen with oven hob & extractor
- near Ludlow
- Turf to rear garden
- UPvc double glazing
- New Build
- Vinyl flooring to wet areas
- Downstairs cloakroom
- 2 parking spaces



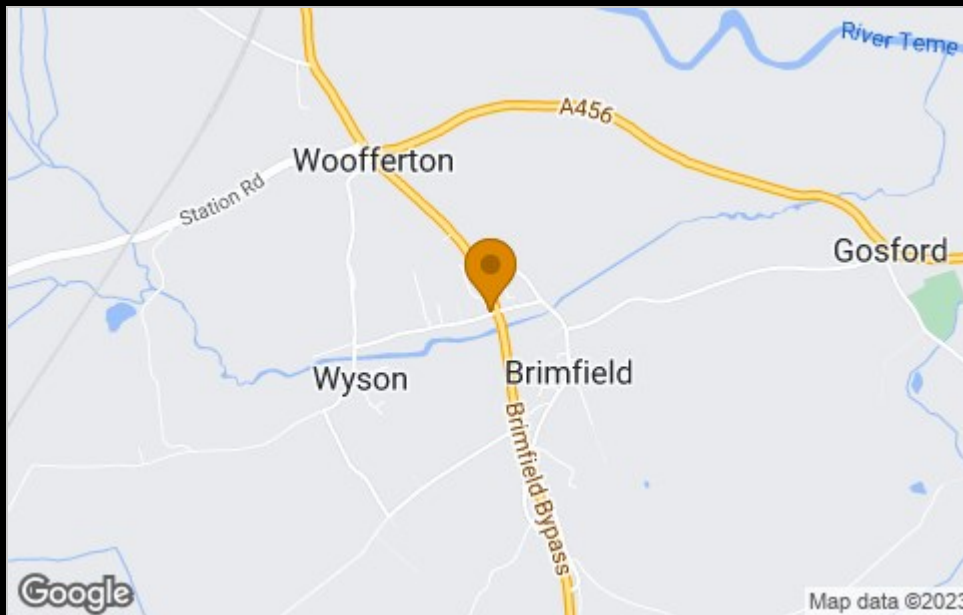




## Floor Plan



## Area Map



## Viewing

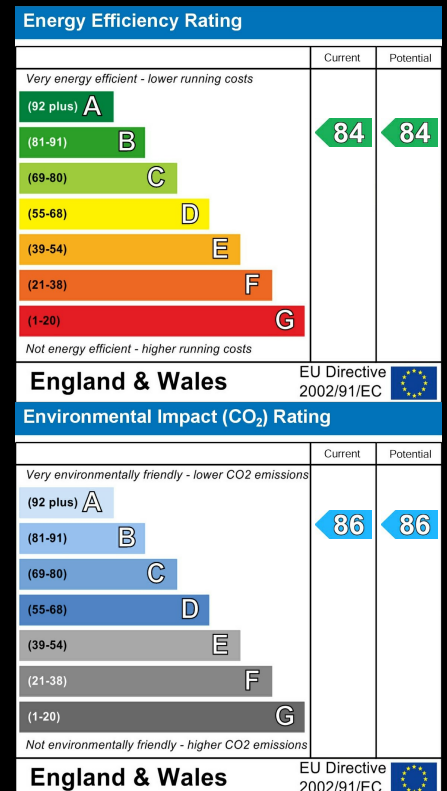
Please contact our Citizen-The Coppice, Shropshire Office on 07971-576-882 if you wish to arrange a viewing appointment for this property

These particulars, whilst believed to be accurate are set out as a general outline only for guidance and do not constitute any part of an offer or contract. Intending purchasers should not rely on them as statements of representation of fact, but must satisfy themselves by inspection or otherwise as to their accuracy. No person in this firm's employment has the authority to make or give any representation or warranty in respect of the property.

4040 Lakeside, Solihull, West Midlands, B37 7YN

Email: [sales@citizenhousing.org.uk](mailto:sales@citizenhousing.org.uk) or visit [www.citizenhousing.org.uk](http://www.citizenhousing.org.uk)

## Energy Efficiency Graph





CITIZEN



## Plot 10 The Coppice Ph2 - 35% Share

10 Kop Close, Wyson Lane, Brimfield, SY8 4FB

**35% Shared ownership £93,240**



# Plot 10 The Coppice Ph2 - 35% Share



## Description

Plot 10 The Coppice Ph2 - 35% share £93,240 purchase price

Total Rent £455.37 pcm

Please note there is an 80% staircasing restriction on these homes.

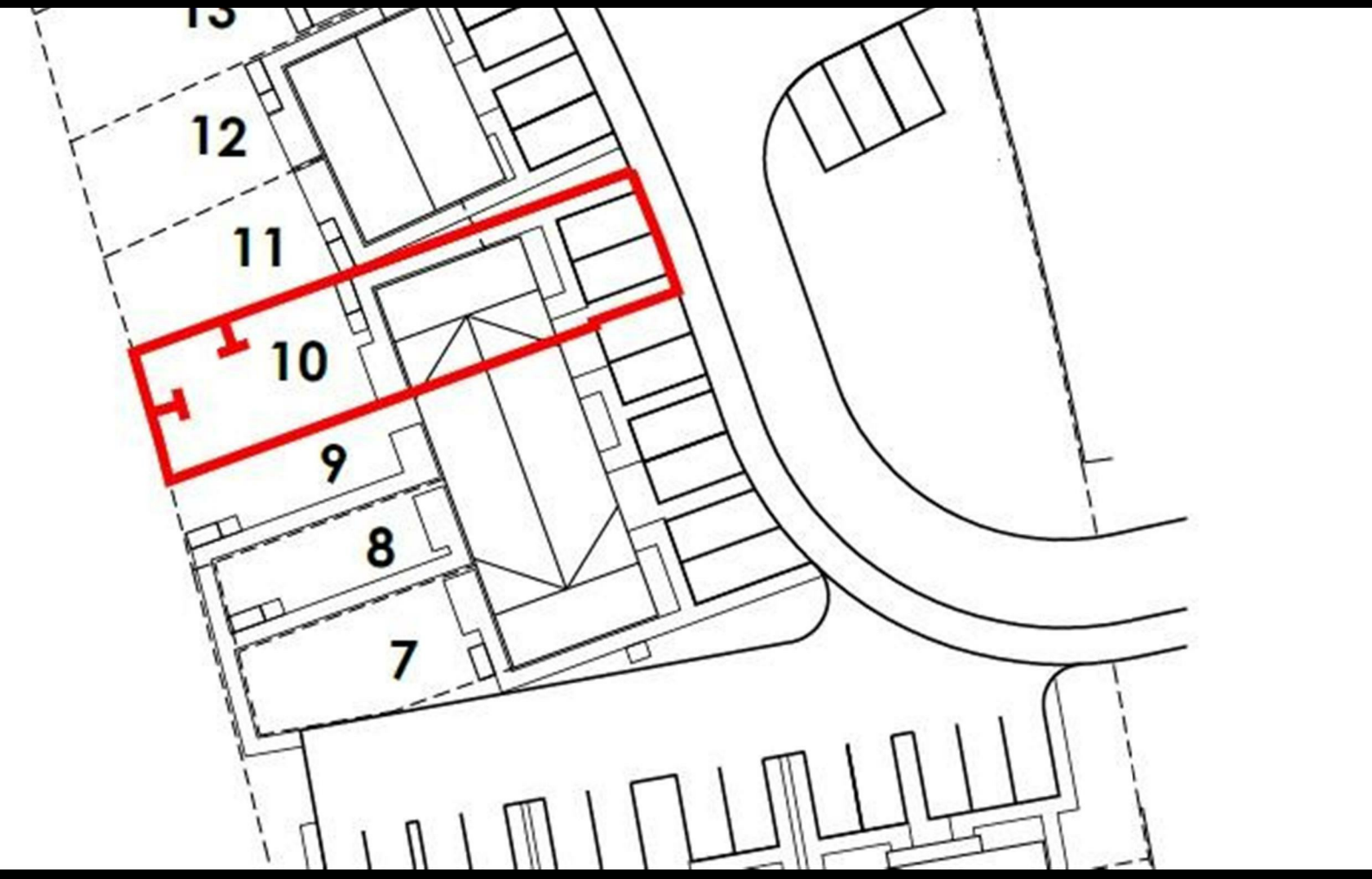
If you would like to apply for this property, please complete our online application form via our Signature Website

AVAILABLE NOW

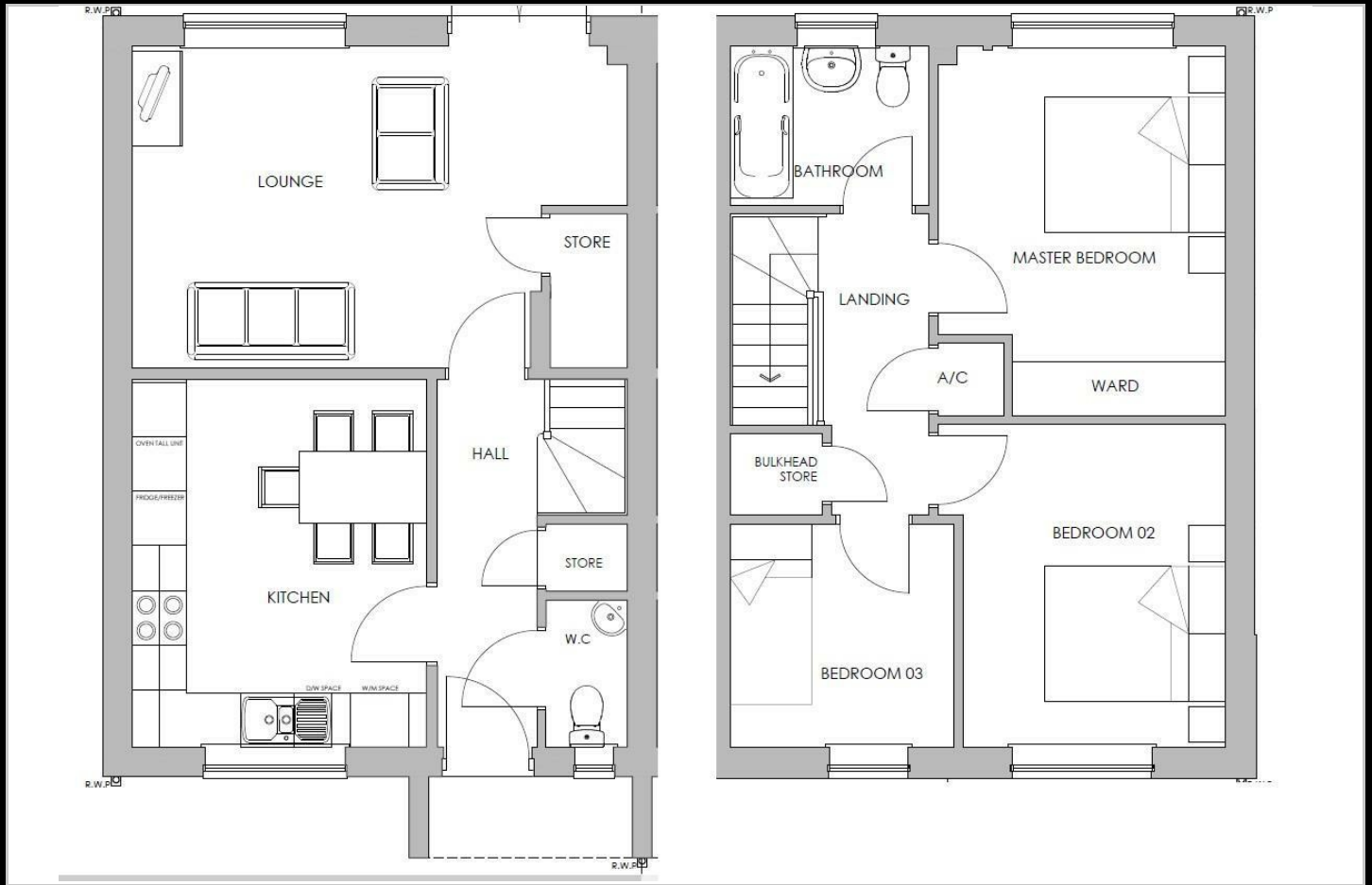
All images/photographs are for illustrative purposes only

- End Terrace
- Fitted kitchen with oven hob & extractor
- near Ludlow
- Turf to rear garden
- UPVc double glazing
- New Build
- Vinyl flooring to wet areas
- Downstairs cloakroom
- 2 parking spaces

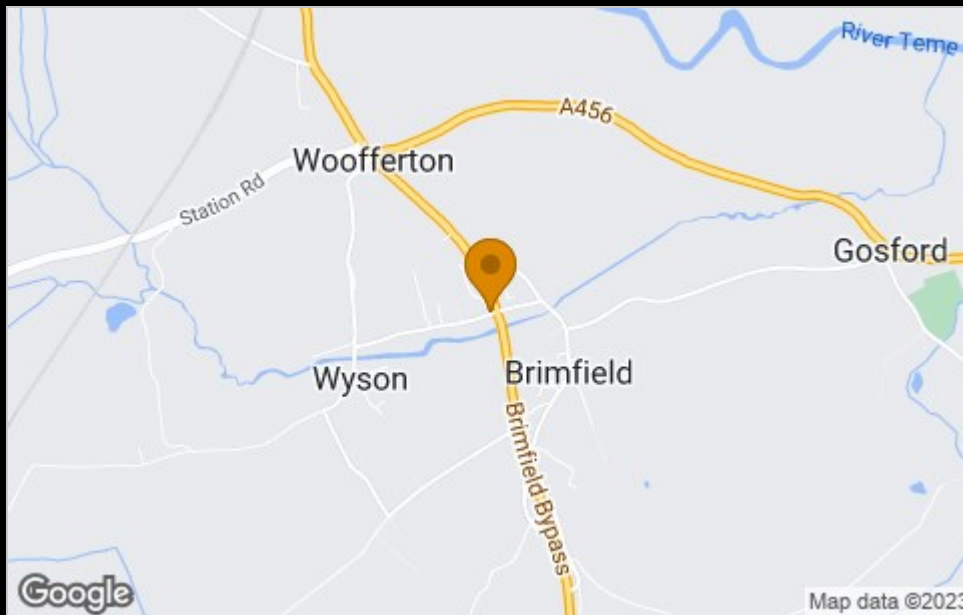




## Floor Plan



## Area Map



## Viewing

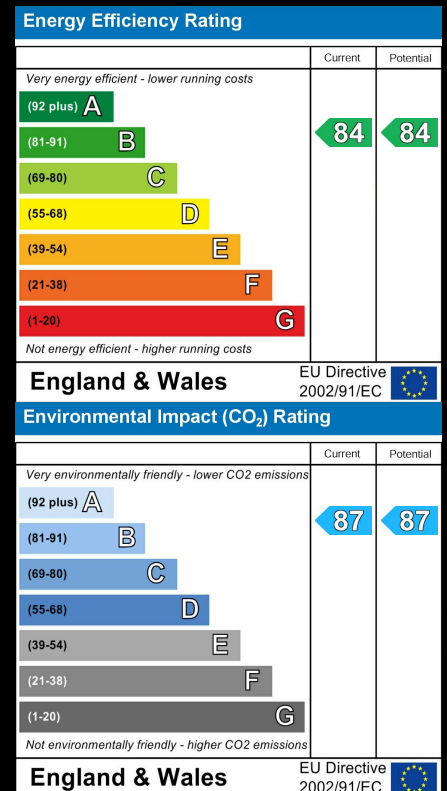
Please contact our Citizen-The Coppice, Shropshire Office on 07971-576-882 if you wish to arrange a viewing appointment for this property

These particulars, whilst believed to be accurate are set out as a general outline only for guidance and do not constitute any part of an offer or contract. Intending purchasers should not rely on them as statements of representation of fact, but must satisfy themselves by inspection or otherwise as to their accuracy. No person in this firm's employment has the authority to make or give any representation or warranty in respect of the property.

4040 Lakeside, Solihull, West Midlands, B37 7YN

Email: [sales@citizenhousing.org.uk](mailto:sales@citizenhousing.org.uk) or visit [www.citizenhousing.org.uk](http://www.citizenhousing.org.uk)

## Energy Efficiency Graph





CITIZEN



## Plot 11 - The Coppice Ph2 - 40% Share

11 Kop Close, Wyson Lane, Brimfield, SY8 4FB

**40% Shared ownership £98,000**



# Plot 11 - The Coppice Ph2 - 40% Share



## Description

Plot 11 The Coppice Ph2 40% Share Purchase price £98,000

Total Rent £393.78 pcm

Please note there is an 80% staircasing restriction on these homes.

If you would like to apply for this property, please complete our online application form via our Signature Website

AVAILABLE NOW

All images/photographs are for illustrative purposes only

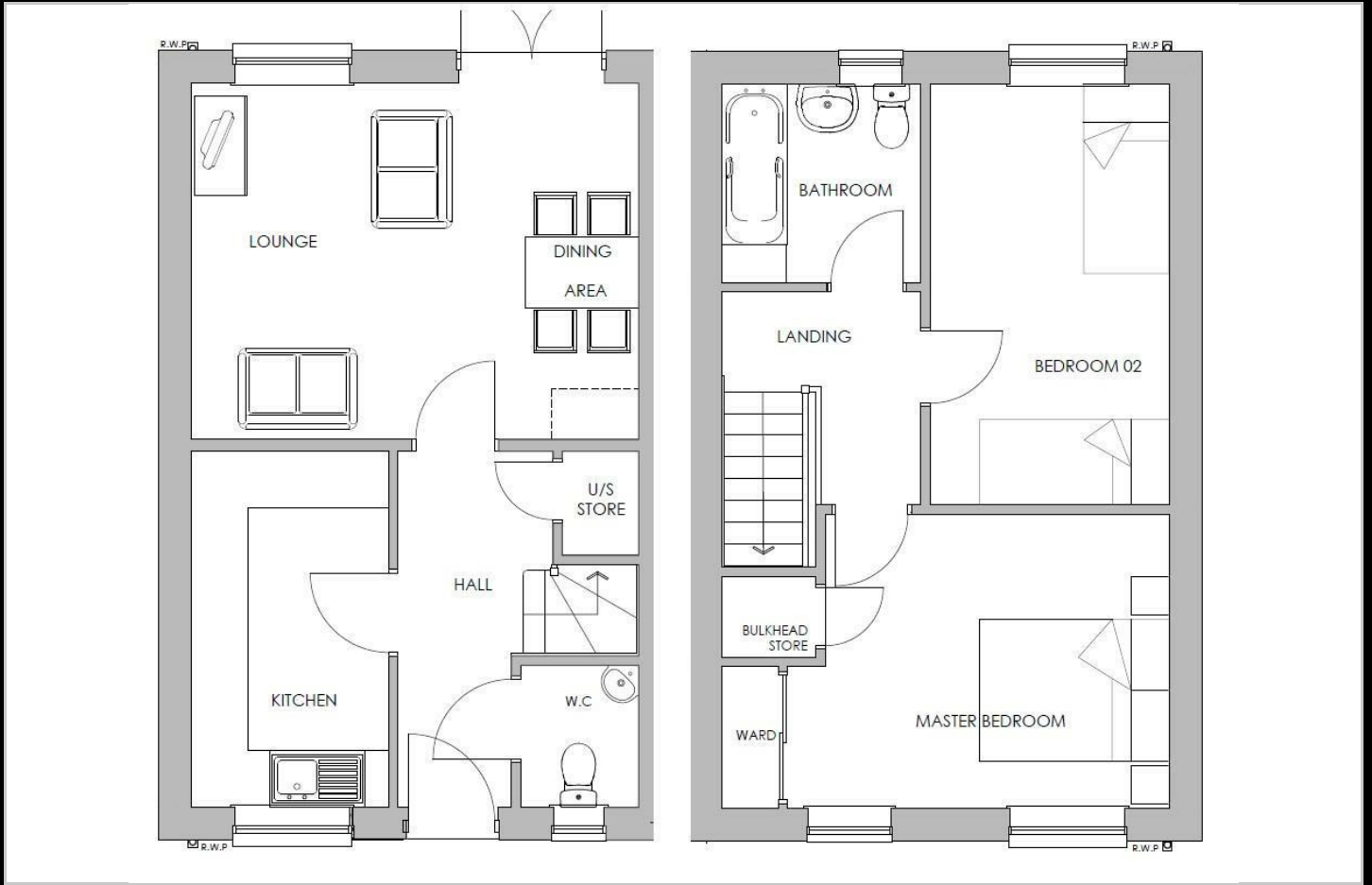
- New build
- 2 parking spaces
- Fitted kitchen with oven, hob & extractor
- 2 spacious bedrooms
- Semi detached
- Turf to rear garden
- Vinyl to wet areas
- UPVC double glazing
- downstairs cloakroom
- Near Ludlow



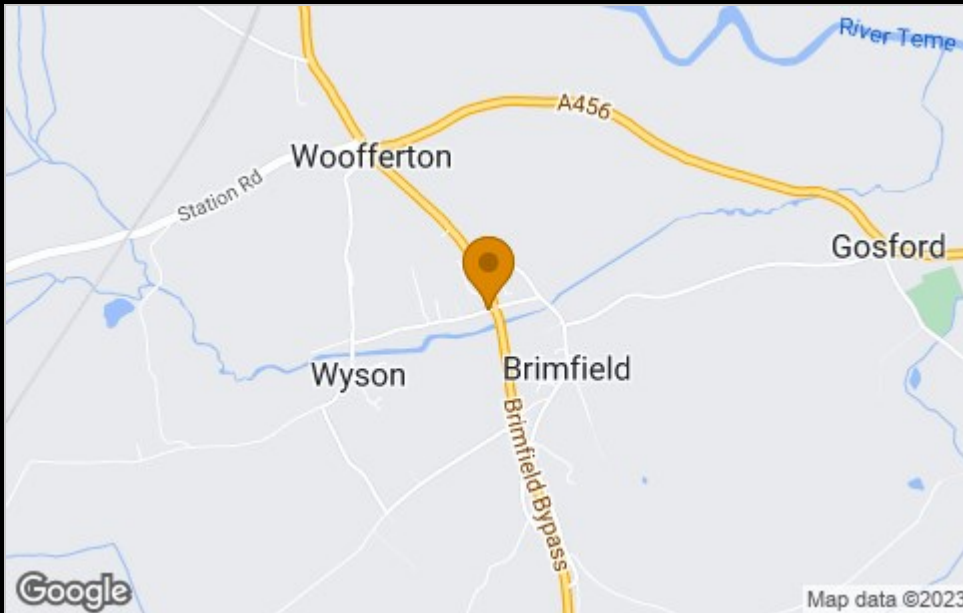




## Floor Plan



## Area Map



## Viewing

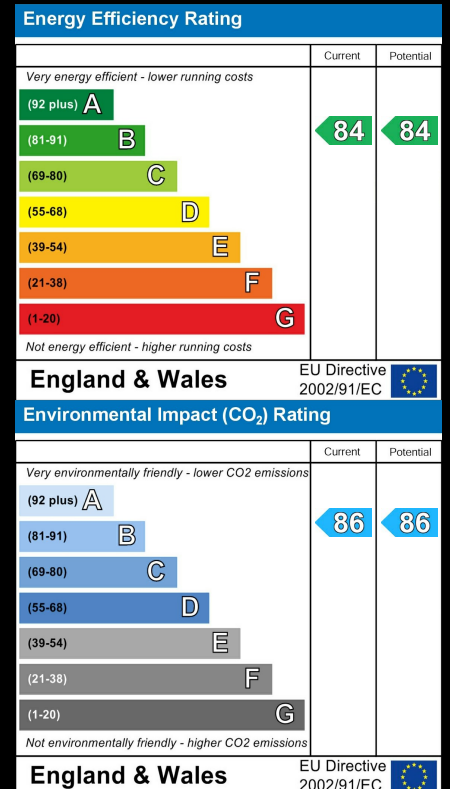
Please contact our Citizen-The Coppice, Shropshire Office on 07971-576-882 if you wish to arrange a viewing appointment for this property

These particulars, whilst believed to be accurate are set out as a general outline only for guidance and do not constitute any part of an offer or contract. Intending purchasers should not rely on them as statements of representation of fact, but must satisfy themselves by inspection or otherwise as to their accuracy. No person in this firm's employment has the authority to make or give any representation or warranty in respect of the property.

4040 Lakeside, Solihull, West Midlands, B37 7YN

Email: [sales@citizenhousing.org.uk](mailto:sales@citizenhousing.org.uk) or visit [www.citizenhousing.org.uk](http://www.citizenhousing.org.uk)

## Energy Efficiency Graph





CITIZEN



## Plot 12 - The Coppice Ph2 - 40% Share

12 Kop Close, Wyson Lane, Brimfield, SY8 4FB

**40% Shared ownership £98,000**



# Plot 12 - The Coppice Ph2 - 40% Share



## Description

Plot 12 The Coppice Ph2 40% Share Purchase price £98,000  
Total Rent £393.78 pcm

Please note there is an 80% staircasing restriction on these homes.

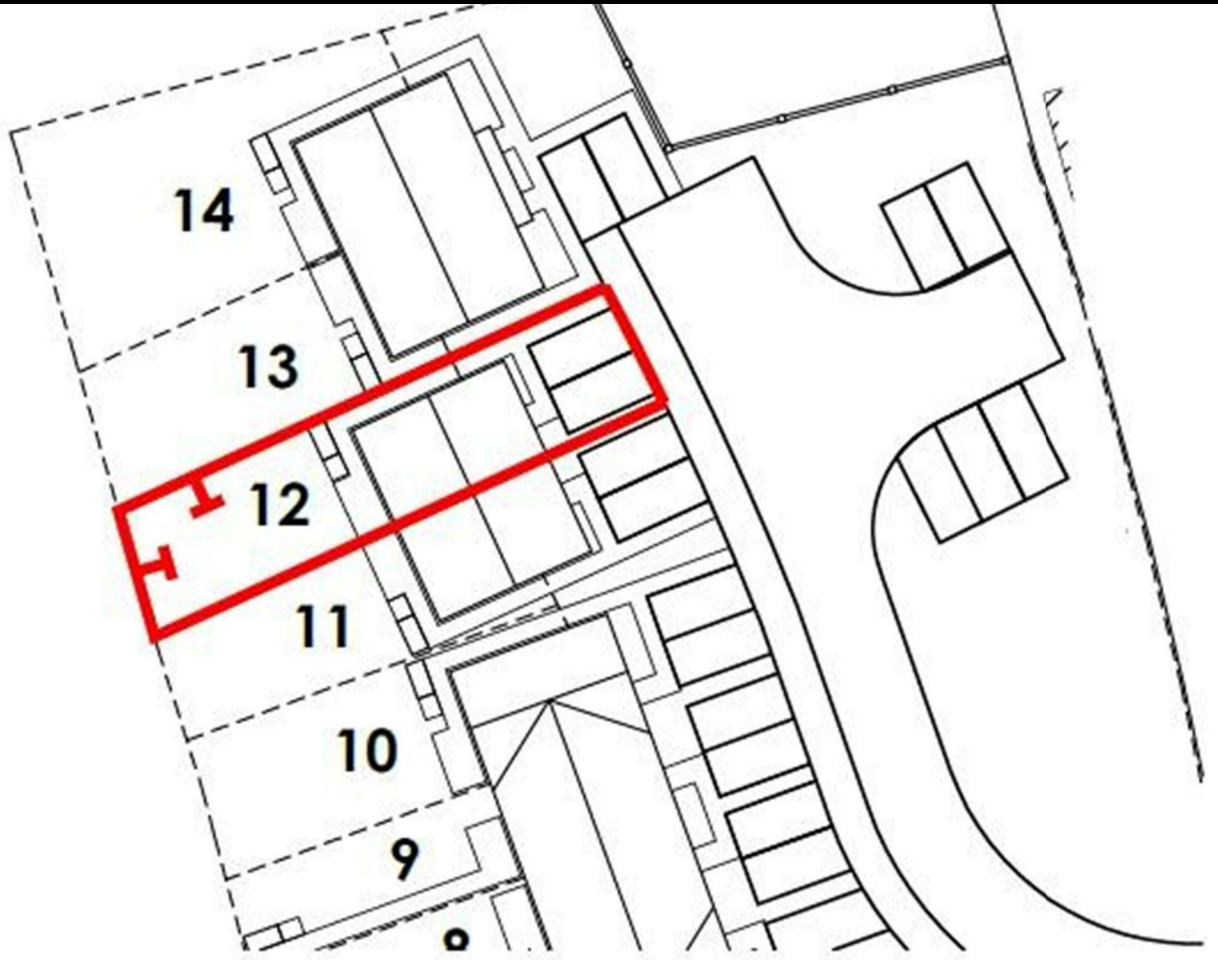
If you would like to apply for this property, please complete our online application form via our Signature Website

AVAILABLE NOW

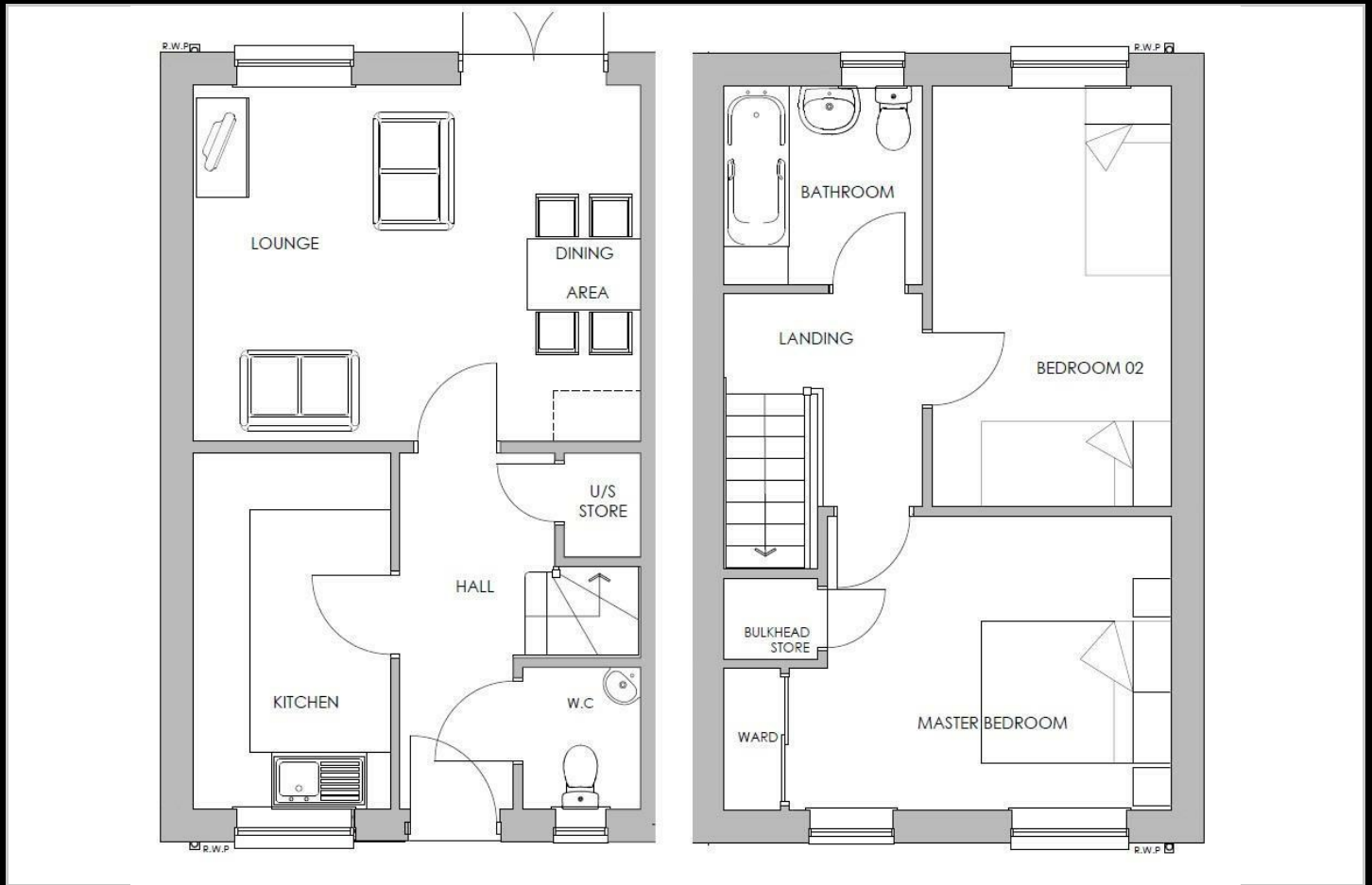
All images/photographs are for illustrative purposes only

- New build
- 2 parking spaces
- Fitted kitchen with oven, hob & extractor
- 2 spacious bedrooms
- Semi detached
- Turf to rear garden
- Vinyl to wet areas
- UPVC double glazing
- downstairs cloakroom
- Near Ludlow

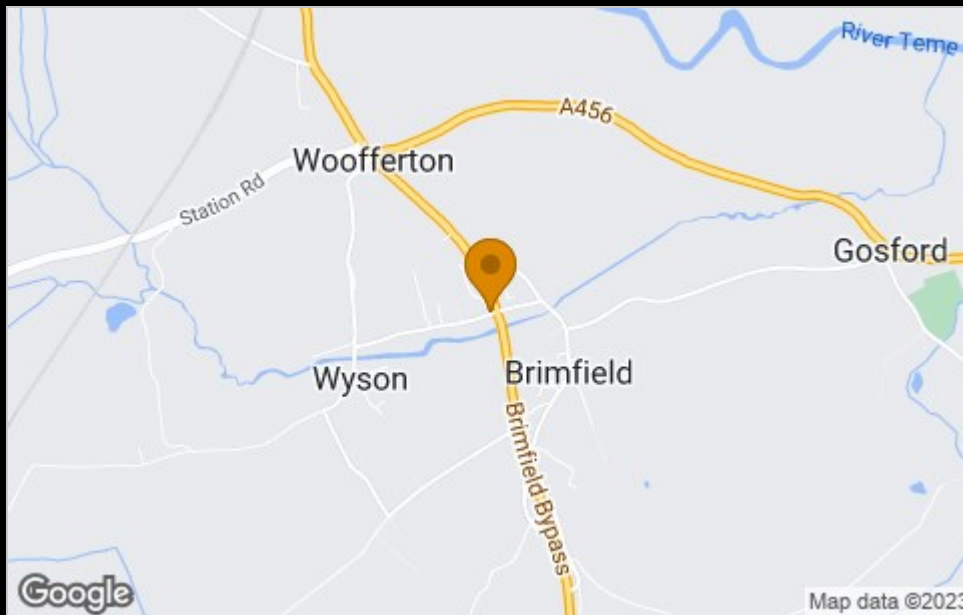




## Floor Plan



## Area Map



## Viewing

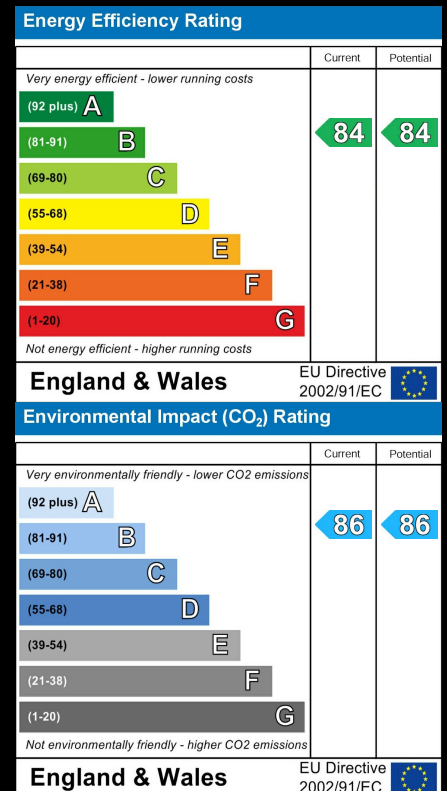
Please contact our Citizen-The Coppice, Shropshire Office on 07971-576-882 if you wish to arrange a viewing appointment for this property

These particulars, whilst believed to be accurate are set out as a general outline only for guidance and do not constitute any part of an offer or contract. Intending purchasers should not rely on them as statements of representation of fact, but must satisfy themselves by inspection or otherwise as to their accuracy. No person in this firm's employment has the authority to make or give any representation or warranty in respect of the property.

4040 Lakeside, Solihull, West Midlands, B37 7YN

Email: [sales@citizenhousing.org.uk](mailto:sales@citizenhousing.org.uk) or visit [www.citizenhousing.org.uk](http://www.citizenhousing.org.uk)

## Energy Efficiency Graph





CITIZEN



## Plot 13 - The Coppice Ph2 - 35% Share

14 Kop Close, Wyson Lane, Brimfield, SY8 4FB

**35% Shared ownership £94,465**



# Plot 13 - The Coppice Ph2 - 35% Share



## Description

Plot 13 The Coppice Ph2 - 35% share £94,465 purchase price

Total Rent £460.58 pcm

Please note there is an 80% staircasing restriction on these homes.

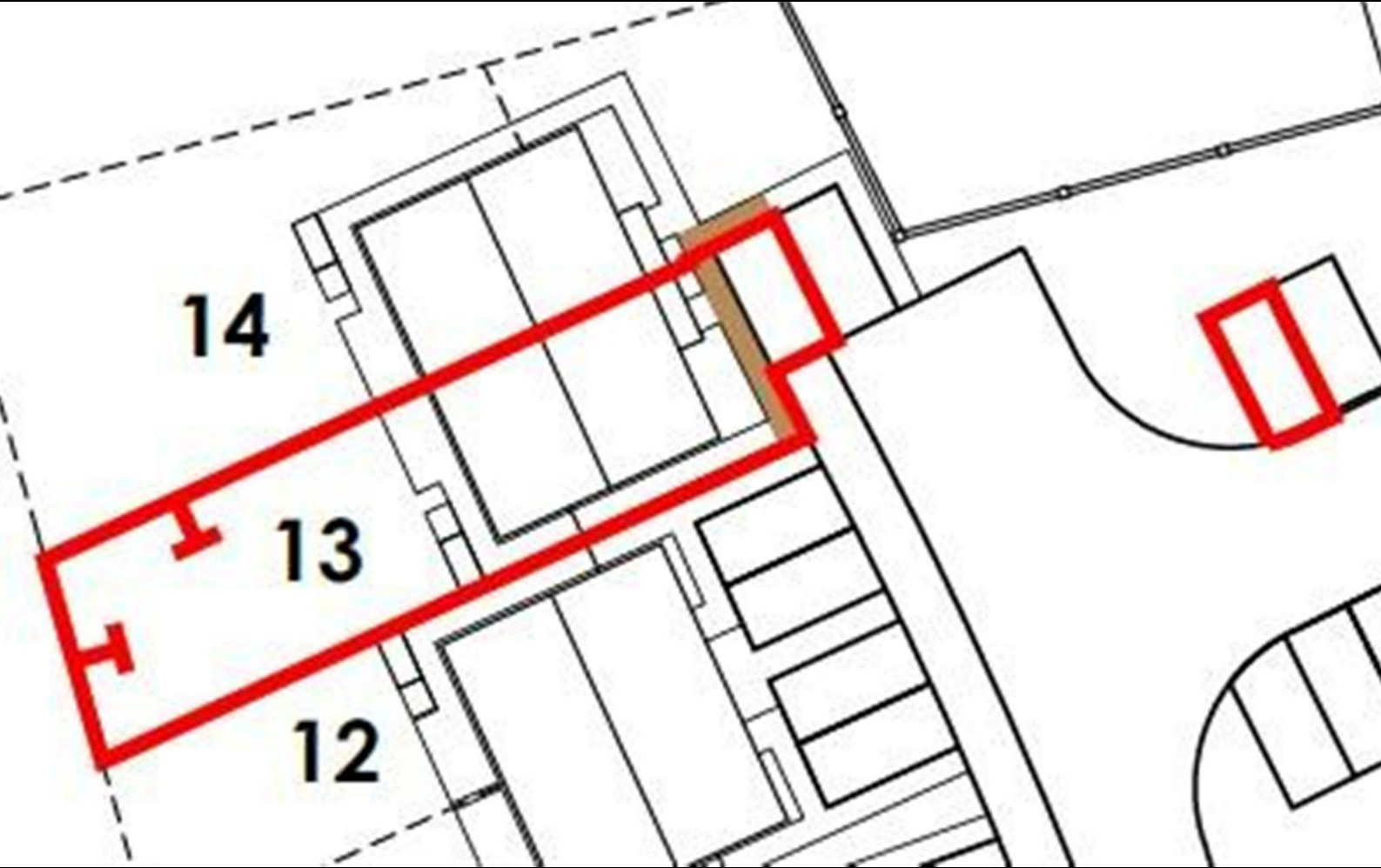
If you would like to apply for this property, please complete our online application form via our Signature Website

AVAILABLE NOW

All images/photographs are for illustrative purposes only

- Semi Detached
- Fitted kitchen with oven hob & extractor
- near Ludlow
- Turf to rear garden
- UPVc double glazing
- New Build
- Vinyl flooring to wet areas
- Downstairs cloakroom
- 2 parking spaces









CITIZEN



## Plot 14 - The Coppice Ph2 - 35% Share

15 Kop Close, Wyson Lane, Brimfield, SY8 4FB

**35% Shared ownership £94,465**



3



1



1



B

# Plot 14 - The Coppice Ph2 - 35% Share



## Description

Plot 14 The Coppice Ph2 - 35% share £94,465 purchase price  
Total Rent £460.58 pcm

Please note there is an 80% staircasing restriction on these homes.

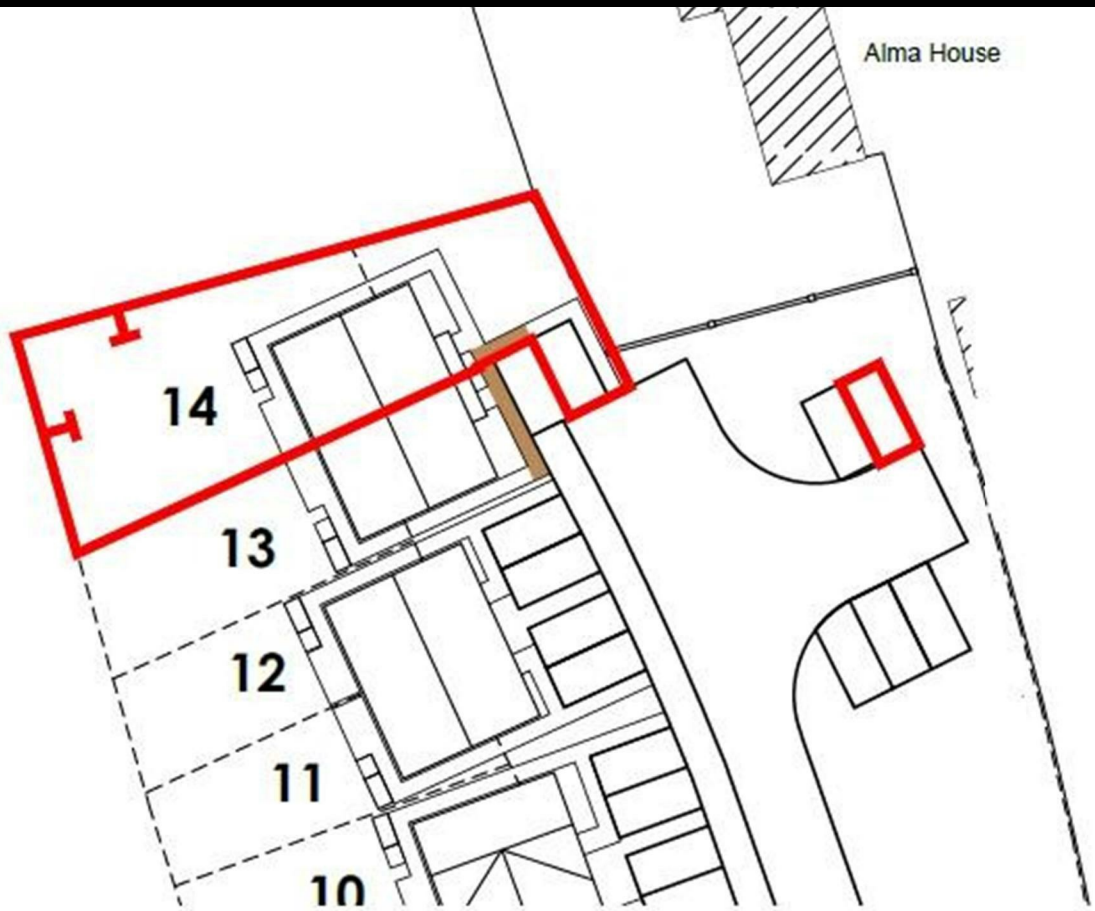
If you would like to apply for this property, please complete our online application form via our Signature Website

AVAILABLE NOW

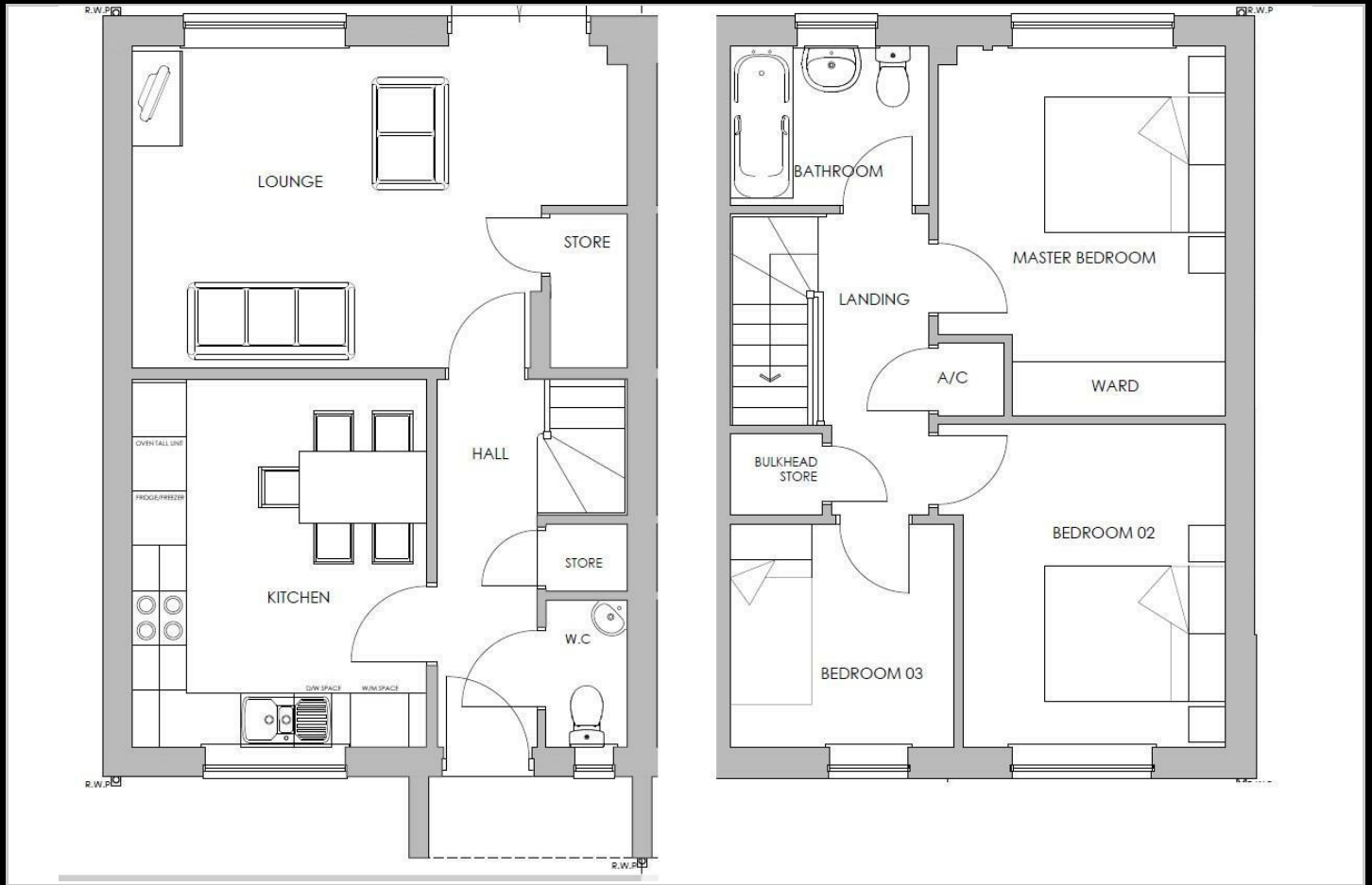
All images/photographs are for illustrative purposes only

- Semi Detached
- Fitted kitchen with oven hob & extractor
- near Ludlow
- Turf to rear garden
- UPVc double glazing
- New Build
- Vinyl flooring to wet areas
- Downstairs cloakroom
- 2 parking spaces





## Floor Plan



## Area Map



## Viewing

Please contact our Citizen-The Coppice, Shropshire Office on 07971-576-882 if you wish to arrange a viewing appointment for this property

These particulars, whilst believed to be accurate are set out as a general outline only for guidance and do not constitute any part of an offer or contract. Intending purchasers should not rely on them as statements of representation of fact, but must satisfy themselves by inspection or otherwise as to their accuracy. No person in this firm's employment has the authority to make or give any representation or warranty in respect of the property.

4040 Lakeside, Solihull, West Midlands, B37 7YN

Email: [sales@citizenhousing.org.uk](mailto:sales@citizenhousing.org.uk) or visit [www.citizenhousing.org.uk](http://www.citizenhousing.org.uk)

## Energy Efficiency Graph

