



CITIZEN



## Plot 8 Oakfields "Type 860" - 40% Share

17 Oakfields View, Credenhill, HR4 7FL

**40% Shared ownership £127,000**





# Plot 8 Oakfields "Type 860" - 40% Share



## Description

Plot 8 Oakfields View Purchase price £98,000 40% Share  
Total Rent £450.43 pcm (plus Management & Service Charge to be confirmed)  
Please note there is an 80% staircasing restriction on these homes.

If you would like to apply for this property, please complete our online application form via our Signature Website

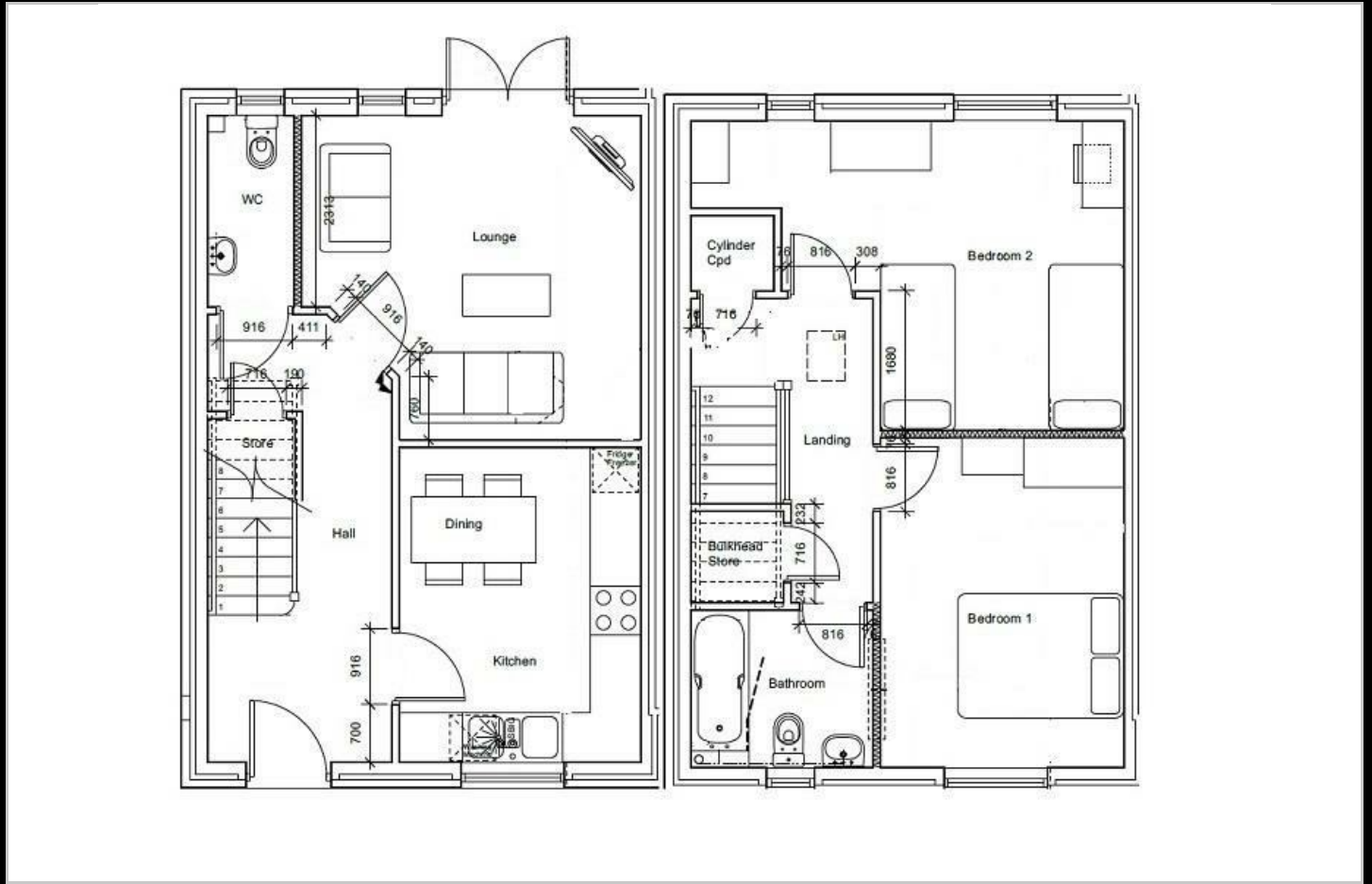
Ready to occupy February 2024

All images/photographs are for illustrative purposes only

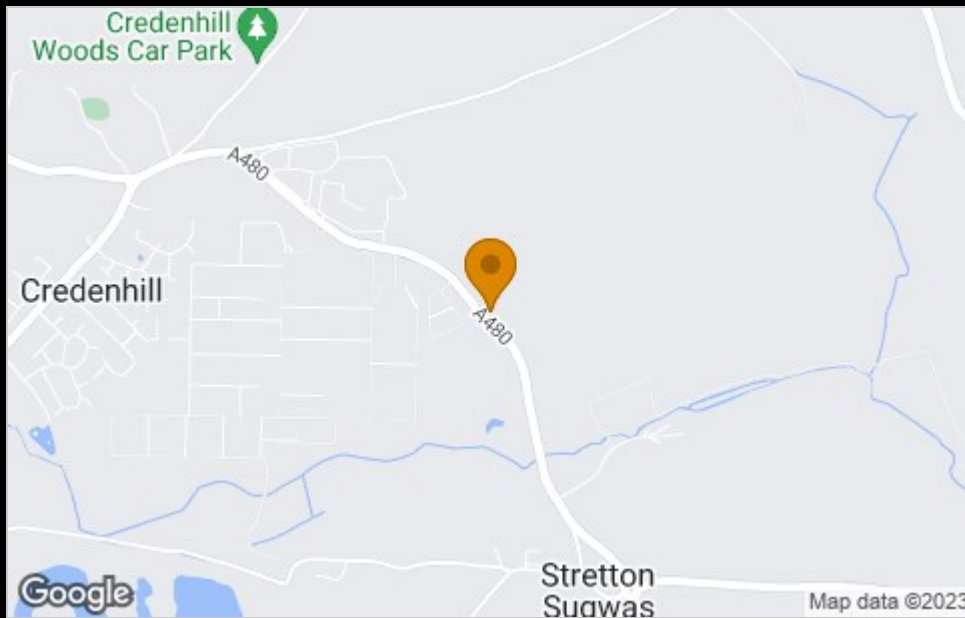
- New Build
- 2 Parking Spaces
- Fitted kitchen with oven, hob & extractor
- near Hereford
- Downstairs cloakroom
- End Terrace
- Vinyl flooring to wet areas
- Turf to rear garden
- 2 spacious bedrooms
- uPVC windows



## Floor Plan



## Area Map



## Viewing

Please contact our Sales Advisor on 07790 336902 if you wish to arrange a viewing appointment for this property or require further information.

These particulars, whilst believed to be accurate are set out as a general outline only for guidance and do not constitute any part of an offer or contract. Intending purchasers should not rely on them as statements of representation of fact, but must satisfy themselves by inspection or otherwise as to their accuracy. No person in this firm's employment has the authority to make or give any representation or warranty in respect of the property.

4040 Lakeside, Solihull, West Midlands, B37 7YN

Email: [sales@citizenhousing.org.uk](mailto:sales@citizenhousing.org.uk) or visit [www.citizenhousing.org.uk](http://www.citizenhousing.org.uk)

## Energy Efficiency Graph

Energy Efficiency Rating		Current	Potential
Very energy efficient - lower running costs			
(92 plus) <b>A</b>			
(81-91) <b>B</b>			
(69-80) <b>C</b>			
(55-68) <b>D</b>			
(39-54) <b>E</b>			
(21-38) <b>F</b>			
(1-20) <b>G</b>			
Not energy efficient - higher running costs			
<b>England &amp; Wales</b>		EU Directive 2002/91/EC	
Environmental Impact (CO <sub>2</sub> ) Rating		Current	Potential
Very environmentally friendly - lower CO <sub>2</sub> emissions			
(92 plus) <b>A</b>			
(81-91) <b>B</b>			
(69-80) <b>C</b>			
(55-68) <b>D</b>			
(39-54) <b>E</b>			
(21-38) <b>F</b>			
(1-20) <b>G</b>			
Not environmentally friendly - higher CO <sub>2</sub> emissions			
<b>England &amp; Wales</b>		EU Directive 2002/91/EC	





CITIZEN



## Plot 9 Oakfields "Type 860" - 40% Share

19 Oakfields View, Credenhill, HR4 7FL

**40% Shared ownership £126,000**





# Plot 9 Oakfields "Type 860" - 40% Share



## Description

Plot 9 Oakfields View Purchase price £126,000 40% Share  
Total Rent £447.00 pcm (plus Management & Service Charge to be confirmed)  
Please note there is an 80% staircasing restriction on these homes.

If you would like to apply for this property, please complete our online application form via our Signature Website

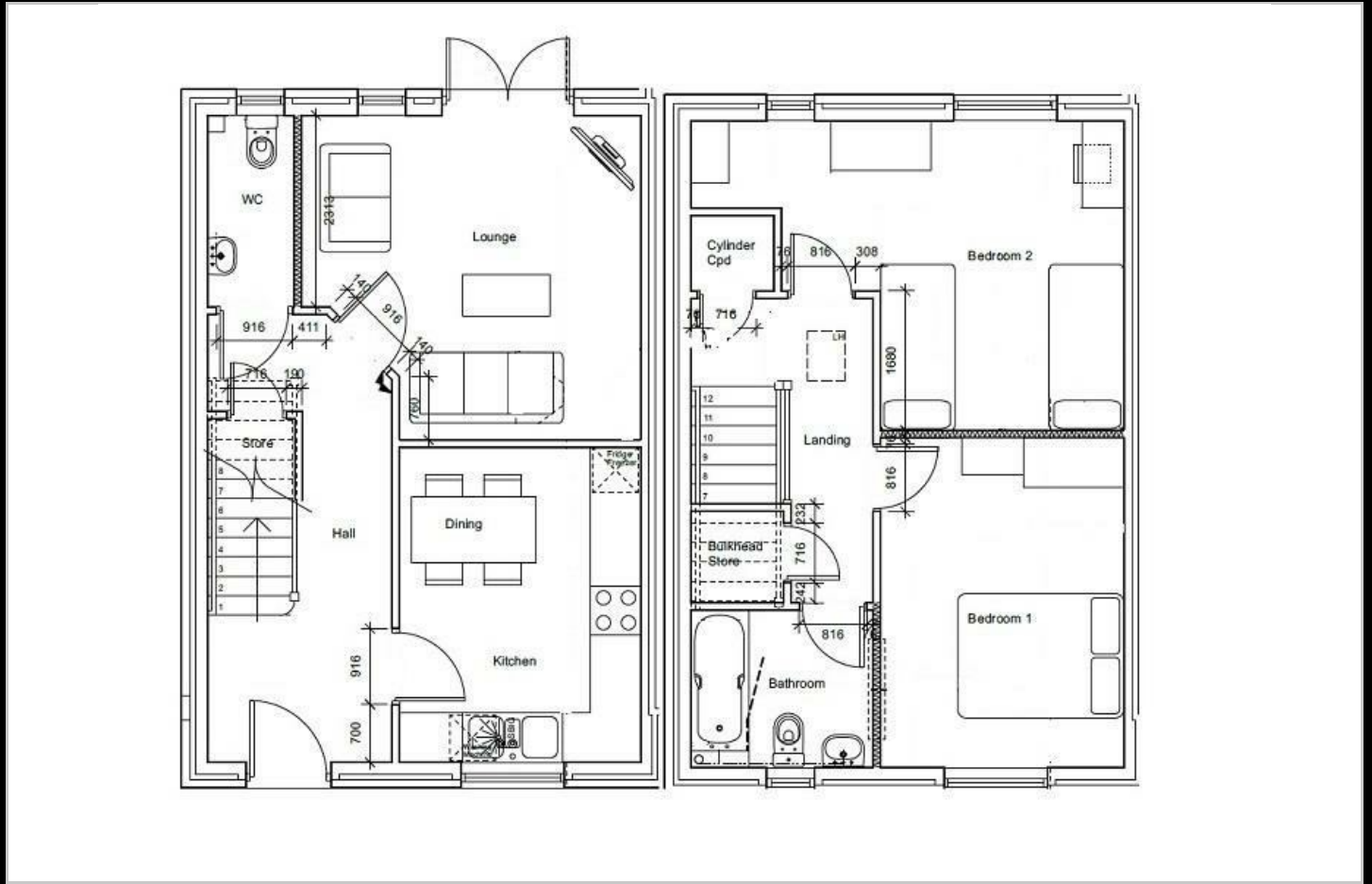
Ready to occupy February 2024

All images/photographs are for illustrative purposes only

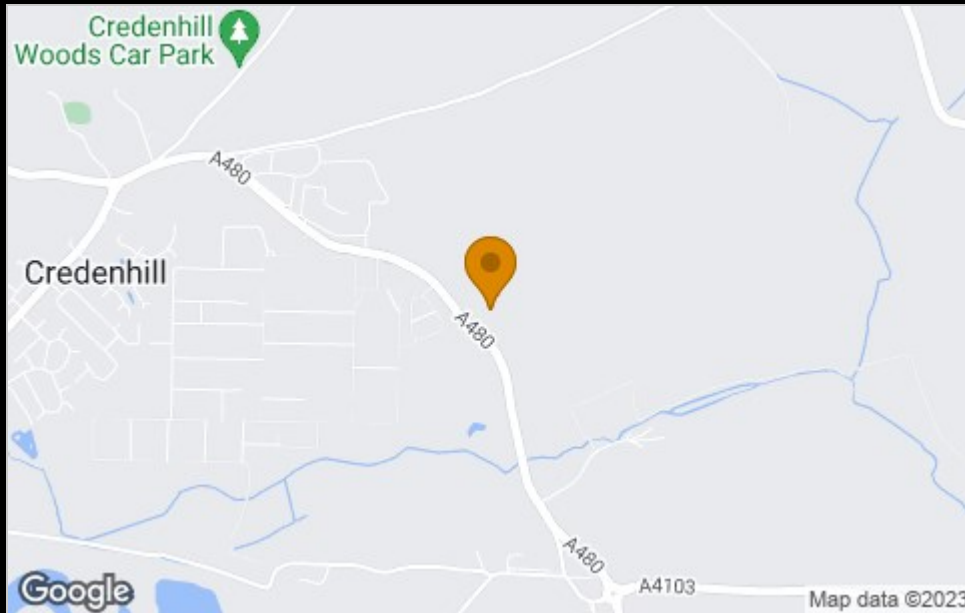
- New Build
- 2 Parking Spaces
- Fitted kitchen with oven, hob & extractor
- near Hereford
- Downstairs cloakroom
- Mid Terrace
- Vinyl flooring to wet areas
- Turf to rear garden
- 2 spacious bedrooms
- uPVC windows



## Floor Plan



## Area Map



## Viewing

Please contact our Sales Advisor on 07790 336902 if you wish to arrange a viewing appointment for this property or require further information.

These particulars, whilst believed to be accurate are set out as a general outline only for guidance and do not constitute any part of an offer or contract. Intending purchasers should not rely on them as statements of representation of fact, but must satisfy themselves by inspection or otherwise as to their accuracy. No person in this firm's employment has the authority to make or give any representation or warranty in respect of the property.

4040 Lakeside, Solihull, West Midlands, B37 7YN

Email: [sales@citizenhousing.org.uk](mailto:sales@citizenhousing.org.uk) or visit [www.citizenhousing.org.uk](http://www.citizenhousing.org.uk)

## Energy Efficiency Graph

Energy Efficiency Rating		Current	Potential
Very energy efficient - lower running costs			
(92 plus) <b>A</b>			
(81-91) <b>B</b>			
(69-80) <b>C</b>			
(55-68) <b>D</b>			
(39-54) <b>E</b>			
(21-38) <b>F</b>			
(1-20) <b>G</b>			
Not energy efficient - higher running costs			
<b>England &amp; Wales</b>		EU Directive 2002/91/EC	
Environmental Impact (CO <sub>2</sub> ) Rating		Current	Potential
Very environmentally friendly - lower CO <sub>2</sub> emissions			
(92 plus) <b>A</b>			
(81-91) <b>B</b>			
(69-80) <b>C</b>			
(55-68) <b>D</b>			
(39-54) <b>E</b>			
(21-38) <b>F</b>			
(1-20) <b>G</b>			
Not environmentally friendly - higher CO <sub>2</sub> emissions			
<b>England &amp; Wales</b>		EU Directive 2002/91/EC	





CITIZEN



## Plot 10 Oakfields "Type 860" - 40% Share

21 Oakfields View, Credenhill, HR4 7FL

**40% Shared ownership £127,000**





# Plot 10 Oakfields "Type 860" - 40% Share



## Description

Plot 10 Oakfields View Purchase price £127,000 40% Share  
Total Rent £450.43 pcm (plus Management & Service Charge to be confirmed)  
Please note there is an 80% staircasing restriction on these homes.

If you would like to apply for this property, please complete our online application form via our Signature Website

Ready to occupy February 2024

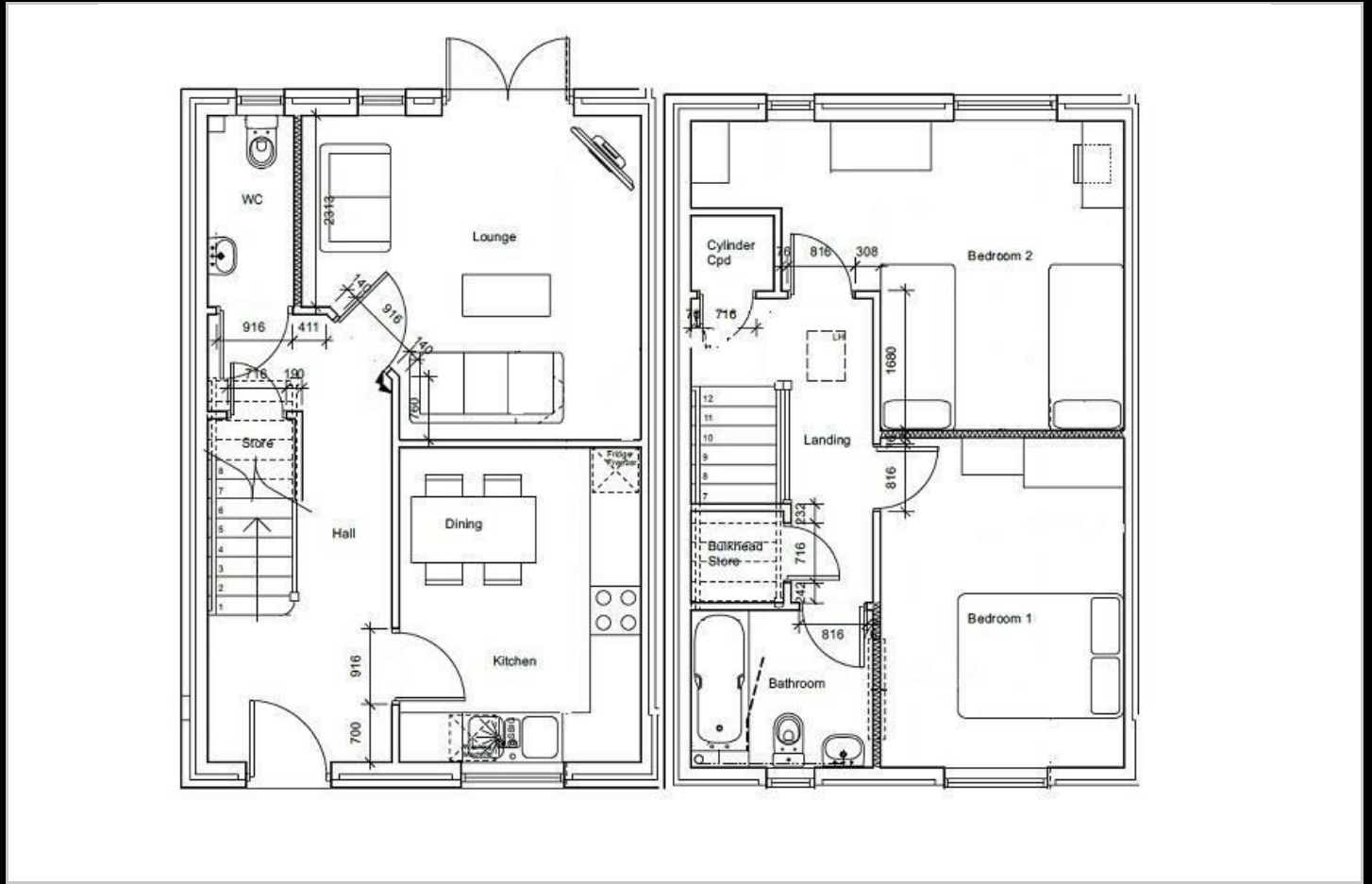
All images/photographs are for illustrative purposes only

- New Build
- 2 Parking Spaces
- Fitted kitchen with oven, hob & extractor
- near Hereford
- Downstairs cloakroom
- End Terrace
- Vinyl flooring to wet areas
- Turf to rear garden
- 2 spacious bedrooms
- uPVC windows

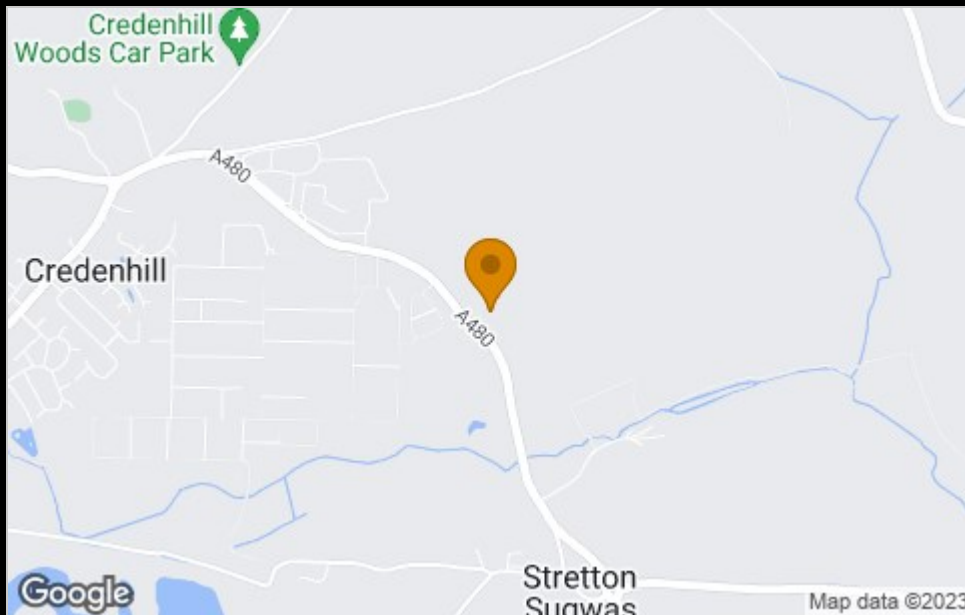




## Floor Plan



## Area Map



## Viewing

Please contact our Sales Advisor on 07790 336902 if you wish to arrange a viewing appointment for this property or require further information.

These particulars, whilst believed to be accurate are set out as a general outline only for guidance and do not constitute any part of an offer or contract. Intending purchasers should not rely on them as statements of representation of fact, but must satisfy themselves by inspection or otherwise as to their accuracy. No person in this firm's employment has the authority to make or give any representation or warranty in respect of the property.

4040 Lakeside, Solihull, West Midlands, B37 7YN

Email: [sales@citizenhousing.org.uk](mailto:sales@citizenhousing.org.uk) or visit [www.citizenhousing.org.uk](http://www.citizenhousing.org.uk)

## Energy Efficiency Graph

Energy Efficiency Rating		Current	Potential
Very energy efficient - lower running costs			
(92 plus) <b>A</b>			
(81-91) <b>B</b>			
(69-80) <b>C</b>			
(55-68) <b>D</b>			
(39-54) <b>E</b>			
(21-38) <b>F</b>			
(1-20) <b>G</b>			
Not energy efficient - higher running costs			
<b>England &amp; Wales</b>		EU Directive 2002/91/EC	
Environmental Impact (CO <sub>2</sub> ) Rating		Current	Potential
Very environmentally friendly - lower CO <sub>2</sub> emissions			
(92 plus) <b>A</b>			
(81-91) <b>B</b>			
(69-80) <b>C</b>			
(55-68) <b>D</b>			
(39-54) <b>E</b>			
(21-38) <b>F</b>			
(1-20) <b>G</b>			
Not environmentally friendly - higher CO <sub>2</sub> emissions			
<b>England &amp; Wales</b>		EU Directive 2002/91/EC	



CITIZEN



## Plot 24 Oakfields "Type 860" - 40% Share

49 Oakfields View, Credenhill, HR4 7FL

**40% Shared ownership £128,000**





# Plot 24 Oakfields "Type 860" - 40% Share



## Description

Plot 24 Oakfields View Purchase price £128,000 40% Share  
Total Rent £484.68 pcm  
Ready to Occupy June/July 2024 - AVAILABLE TO RESERVE NOW

Please note there is an 80% staircasing restriction on these homes.

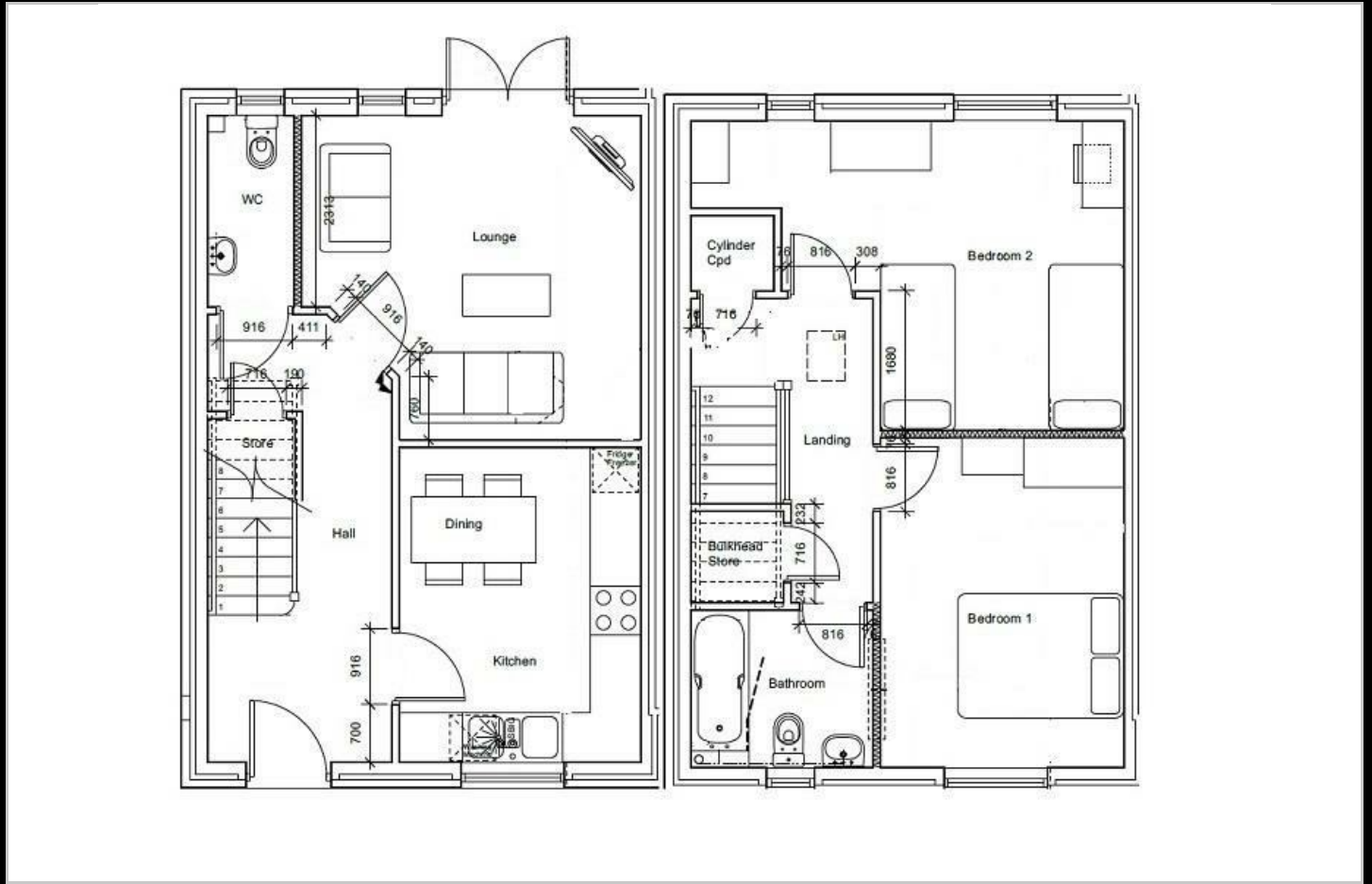
If you would like to apply for this property, please complete our online application form via our Signature Website

All images/photographs are for illustrative purposes only

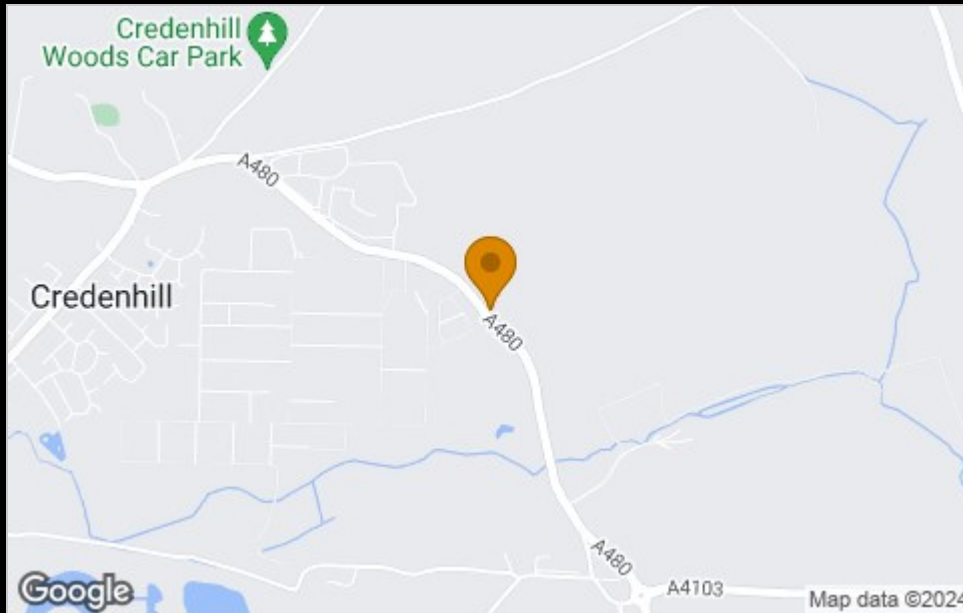
- New Build
- 2 Parking Spaces
- Fitted kitchen with oven, hob & extractor
- near Hereford
- Downstairs cloakroom
- Semi Detached
- Vinyl flooring to wet areas
- Turf to rear garden
- 2 spacious bedrooms
- uPVC windows



## Floor Plan



## Area Map



## Viewing

Please contact our Sales Advisor on 07790 336902 if you wish to arrange a viewing appointment for this property or require further information.

These particulars, whilst believed to be accurate are set out as a general outline only for guidance and do not constitute any part of an offer or contract. Intending purchasers should not rely on them as statements of representation of fact, but must satisfy themselves by inspection or otherwise as to their accuracy. No person in this firm's employment has the authority to make or give any representation or warranty in respect of the property.

4040 Lakeside, Solihull, West Midlands, B37 7YN

Email: [sales@citizenhousing.org.uk](mailto:sales@citizenhousing.org.uk) or visit [www.citizenhousing.org.uk](http://www.citizenhousing.org.uk)

## Energy Efficiency Graph

Energy Efficiency Rating		Current	Potential
Very energy efficient - lower running costs			
(92 plus) <b>A</b>		<b>90</b>	<b>90</b>
(81-91) <b>B</b>			
(69-80) <b>C</b>			
(55-68) <b>D</b>			
(39-54) <b>E</b>			
(21-38) <b>F</b>			
(1-20) <b>G</b>			
Not energy efficient - higher running costs			
<b>England &amp; Wales</b>		EU Directive 2002/91/EC	
Environmental Impact (CO <sub>2</sub> ) Rating		Current	Potential
Very environmentally friendly - lower CO <sub>2</sub> emissions			
(92 plus) <b>A</b>		<b>92</b>	<b>92</b>
(81-91) <b>B</b>			
(69-80) <b>C</b>			
(55-68) <b>D</b>			
(39-54) <b>E</b>			
(21-38) <b>F</b>			
(1-20) <b>G</b>			
Not environmentally friendly - higher CO <sub>2</sub> emissions			
<b>England &amp; Wales</b>		EU Directive 2002/91/EC	





CITIZEN



## Plot 25 Oakfields "Type 1001" - 35% Share

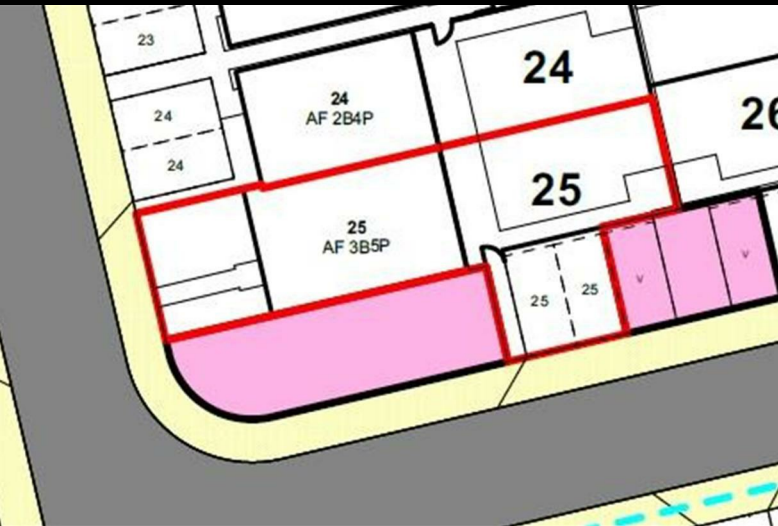
51 Oakfields View, Credenhill, HR4 7FL

**35% Shared ownership £124,250**





# Plot 25 Oakfields "Type 1001" - 35% Share



## Description

Plot 25 Oakfields View Purchase Price £124,250 35% Share  
Total Rent £575.11 pcm

Ready to occupy June/July 2024 AVAILABLE TO RESERVE NOW

Please note there is an 80% staircasing restriction on these homes.

If you would like to apply for this property, please complete our online application form via our Signature Website

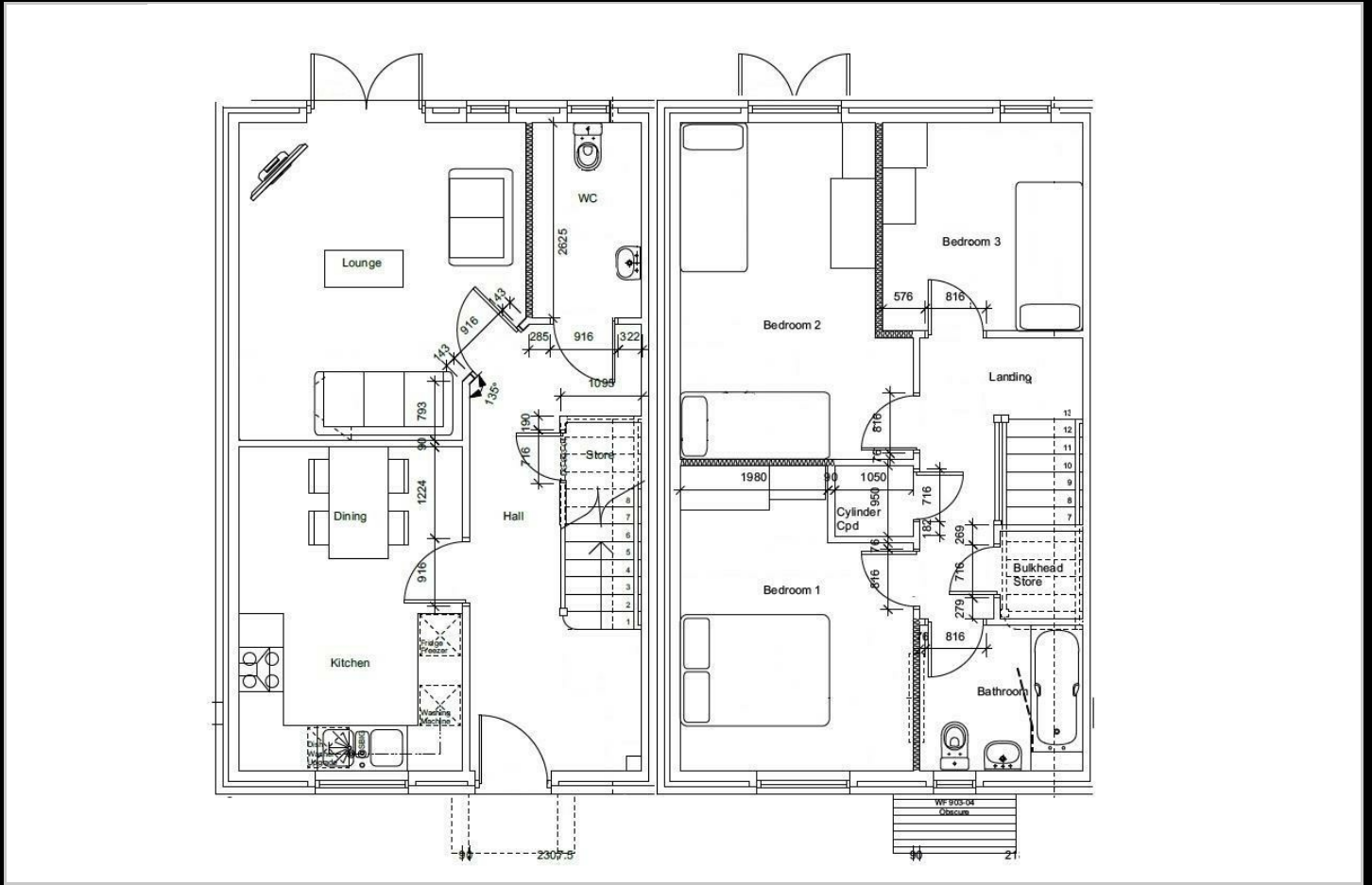
All images/photographs are for illustrative purposes only

- New Build
- 2 Parking Spaces
- Fitted kitchen with oven, hob & extractor
- near Hereford
- Downstairs cloakroom
- Semi Detached
- Vinyl flooring to wet areas
- Turf to rear garden
- 3 bedrooms
- uPVC windows

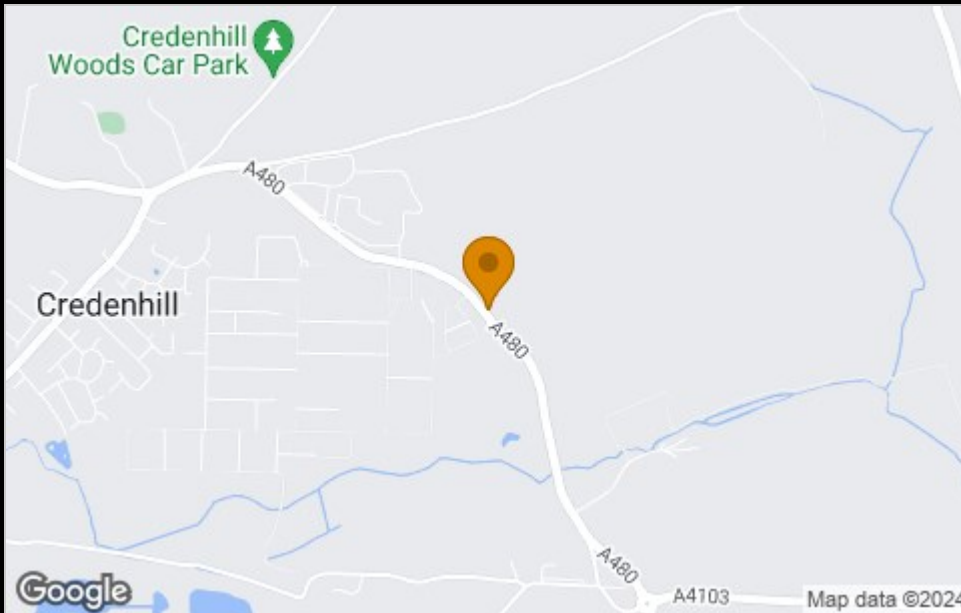




## Floor Plan



## Area Map



## Viewing

Please contact our Sales Advisor on 07790 336902 if you wish to arrange a viewing appointment for this property or require further information.

These particulars, whilst believed to be accurate are set out as a general outline only for guidance and do not constitute any part of an offer or contract. Intending purchasers should not rely on them as statements of representation of fact, but must satisfy themselves by inspection or otherwise as to their accuracy. No person in this firm's employment has the authority to make or give any representation or warranty in respect of the property.

4040 Lakeside, Solihull, West Midlands, B37 7YN

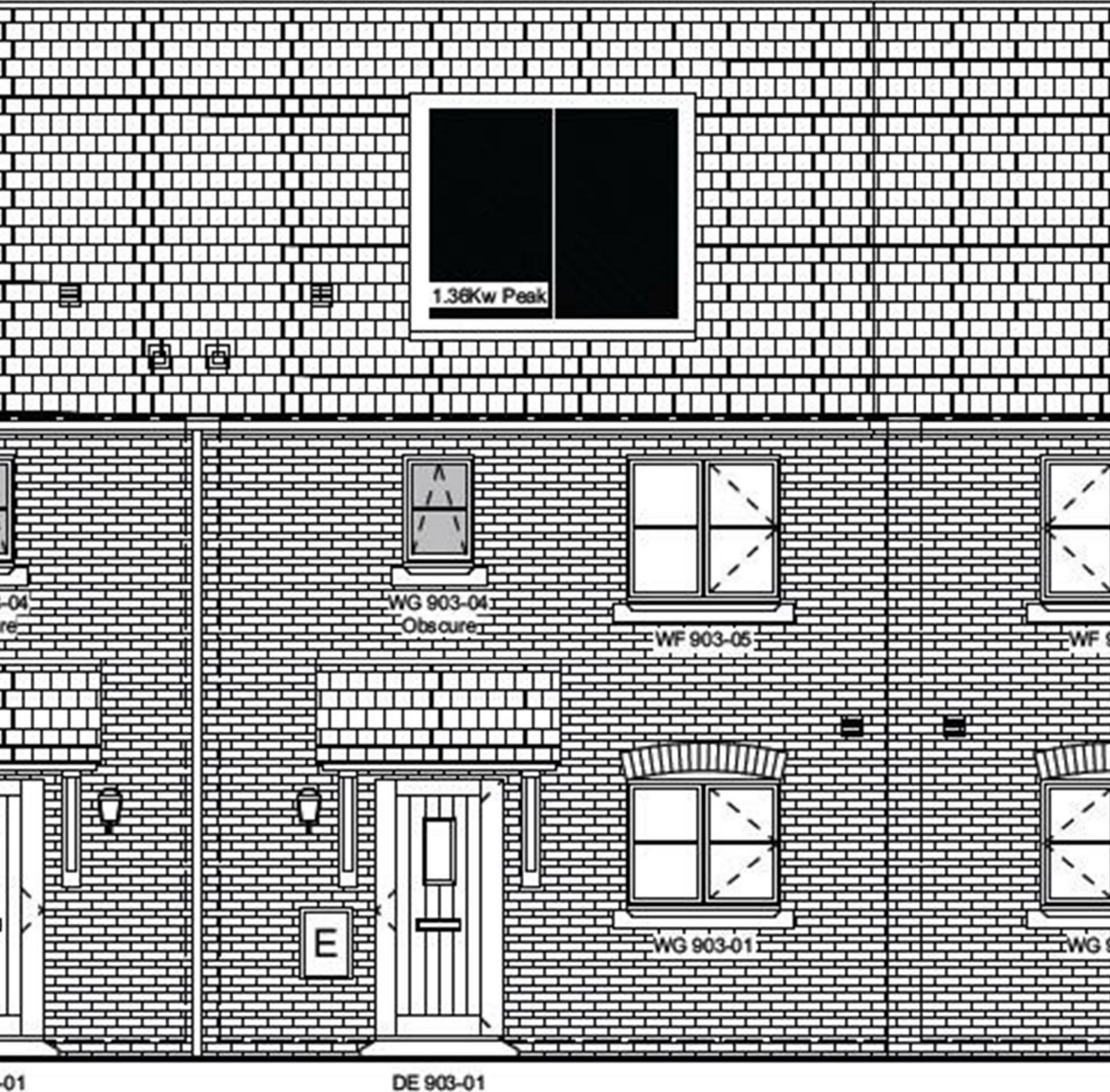
Email: [sales@citizenhousing.org.uk](mailto:sales@citizenhousing.org.uk) or visit [www.citizenhousing.org.uk](http://www.citizenhousing.org.uk)

## Energy Efficiency Graph

Energy Efficiency Rating		Current	Potential
Very energy efficient - lower running costs			
(92 plus) <b>A</b>		90	90
(81-91) <b>B</b>			
(69-80) <b>C</b>			
(55-68) <b>D</b>			
(39-54) <b>E</b>			
(21-38) <b>F</b>			
(1-20) <b>G</b>			
Not energy efficient - higher running costs			
<b>England &amp; Wales</b>		EU Directive 2002/91/EC	
Environmental Impact (CO <sub>2</sub> ) Rating		Current	Potential
Very environmentally friendly - lower CO <sub>2</sub> emissions			
(92 plus) <b>A</b>		92	92
(81-91) <b>B</b>			
(69-80) <b>C</b>			
(55-68) <b>D</b>			
(39-54) <b>E</b>			
(21-38) <b>F</b>			
(1-20) <b>G</b>			
Not environmentally friendly - higher CO <sub>2</sub> emissions			
<b>England &amp; Wales</b>		EU Directive 2002/91/EC	



CITIZEN



## Plot 31 Oakfields "Type 1001" - 35% Share

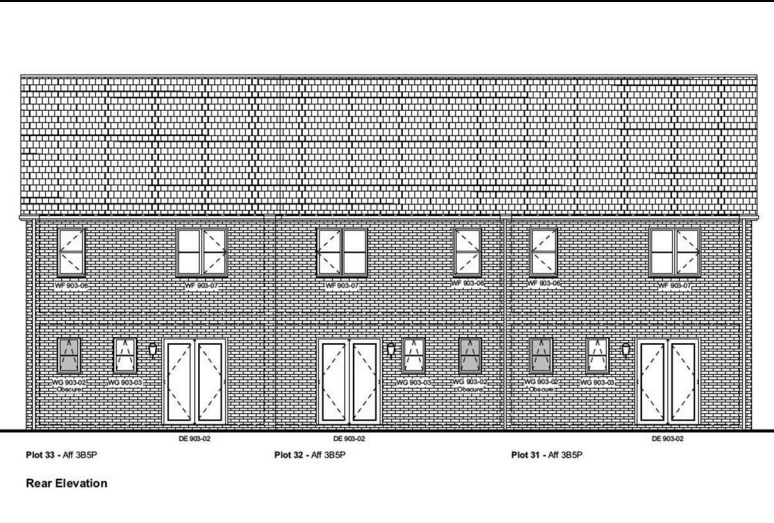
63 Oakfields View, Credenhill, HR4 7FL

**35% Shared ownership £123,375**





# Plot 31 Oakfields "Type 1001" - 35% Share



## Description

Plot 31 Oakfields View Purchase Price £123,375 35% Share  
Total Rent £571.39 pcm  
Ready to occupy August 2024 - AVAILABLE TO RESERVE NOW

Please note there is an 80% staircasing restriction on these homes.

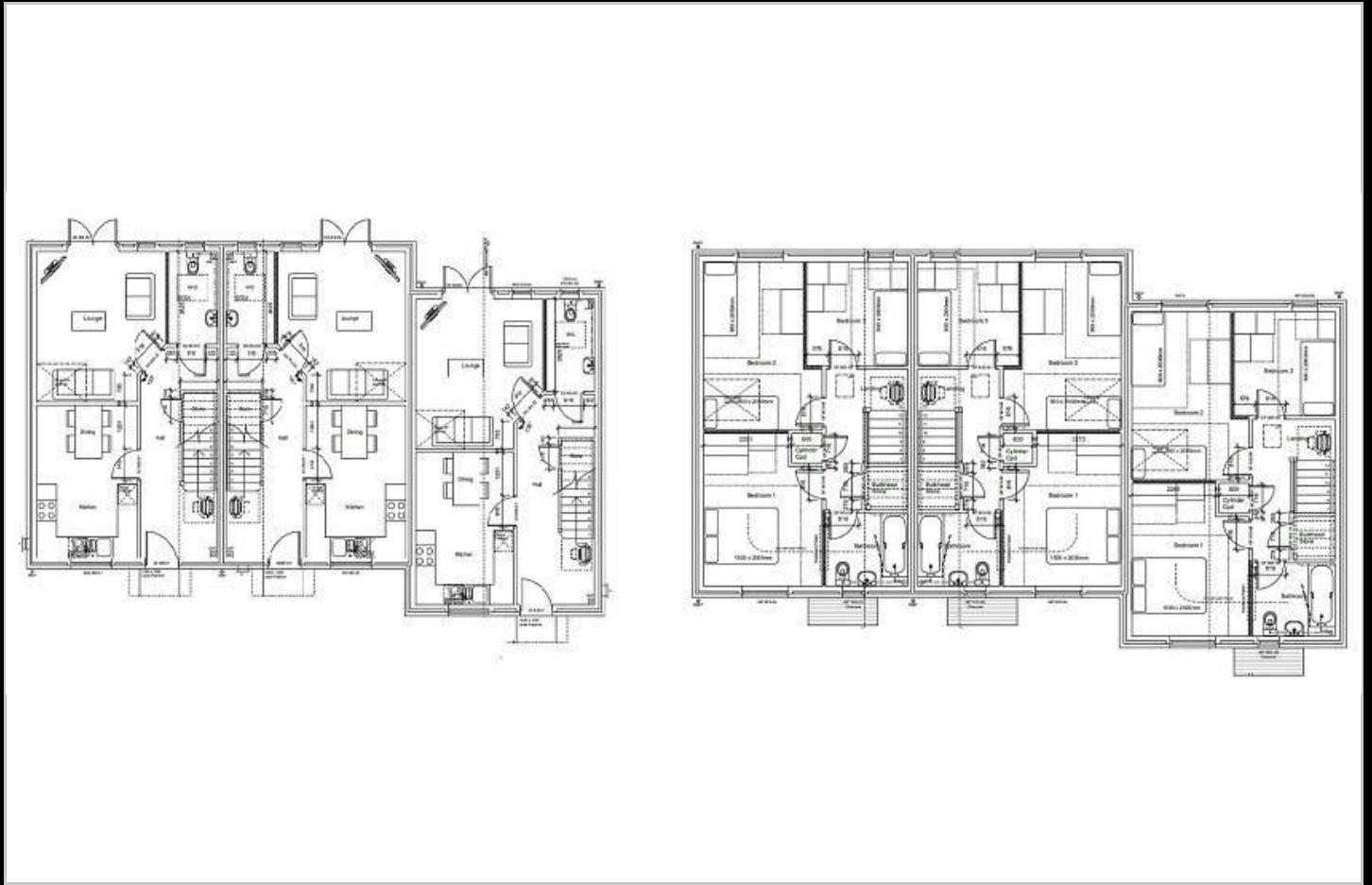
If you would like to apply for this property, please complete our online application form via our Signature Website

All images/photographs are for illustrative purposes only

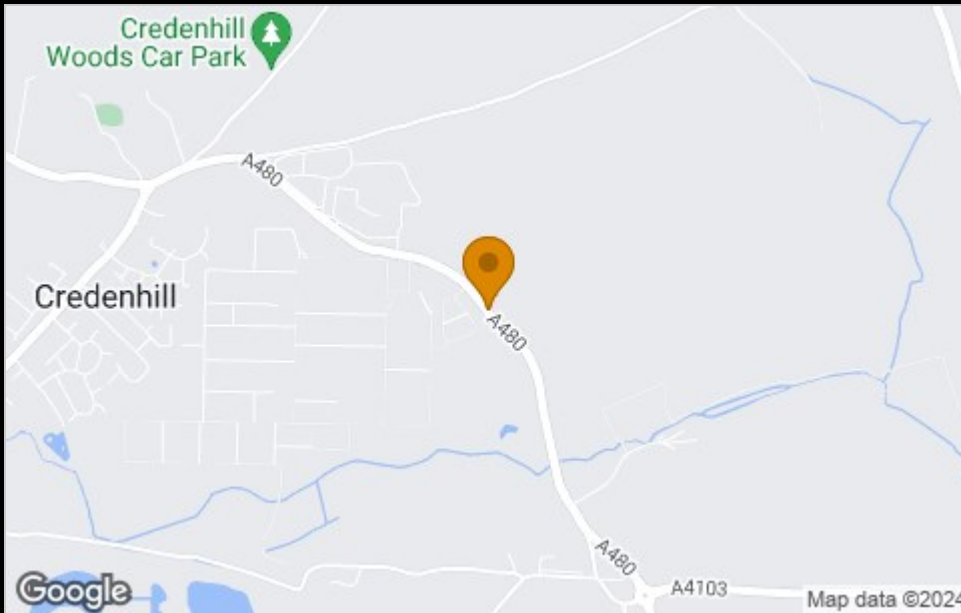
- New Build
- 2 Parking Spaces
- Fitted kitchen with oven, hob & extractor
- near Hereford
- Downstairs cloakroom
- End Terrace
- Vinyl flooring to wet areas
- Turf to rear garden
- 3 bedrooms
- uPVC windows



## Floor Plan



## Area Map



## Viewing

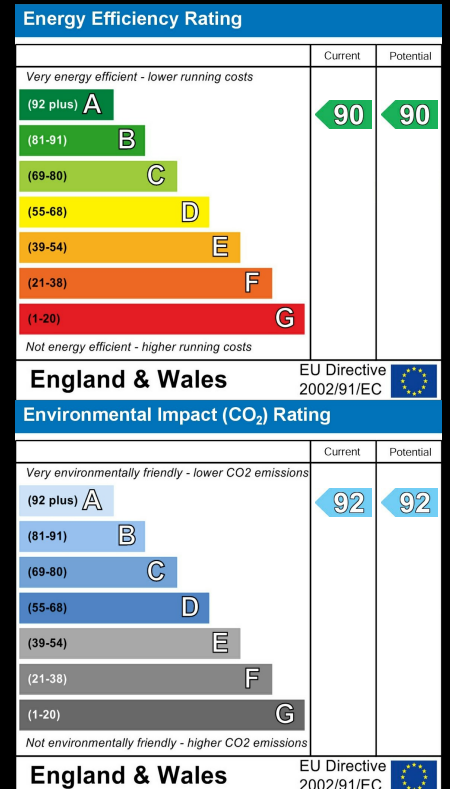
Please contact our Sales Advisor on 07790 336902 if you wish to arrange a viewing appointment for this property or require further information.

These particulars, whilst believed to be accurate are set out as a general outline only for guidance and do not constitute any part of an offer or contract. Intending purchasers should not rely on them as statements of representation of fact, but must satisfy themselves by inspection or otherwise as to their accuracy. No person in this firm's employment has the authority to make or give any representation or warranty in respect of the property.

4040 Lakeside, Solihull, West Midlands, B37 7YN

Email: [sales@citizenhousing.org.uk](mailto:sales@citizenhousing.org.uk) or visit [www.citizenhousing.org.uk](http://www.citizenhousing.org.uk)

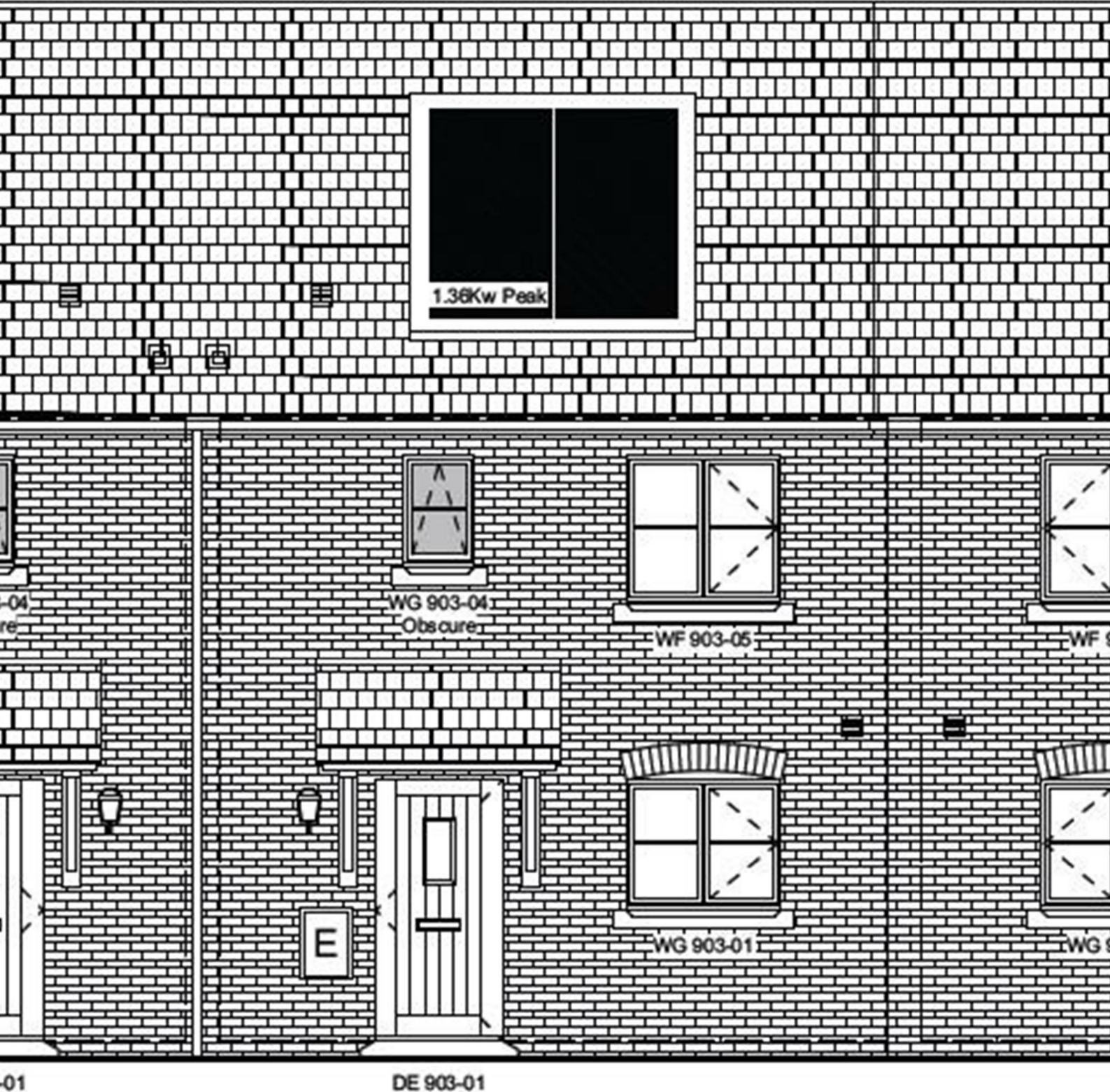
## Energy Efficiency Graph







CITIZEN



## Plot 32 Oakfields "Type 1001" - 35% Share

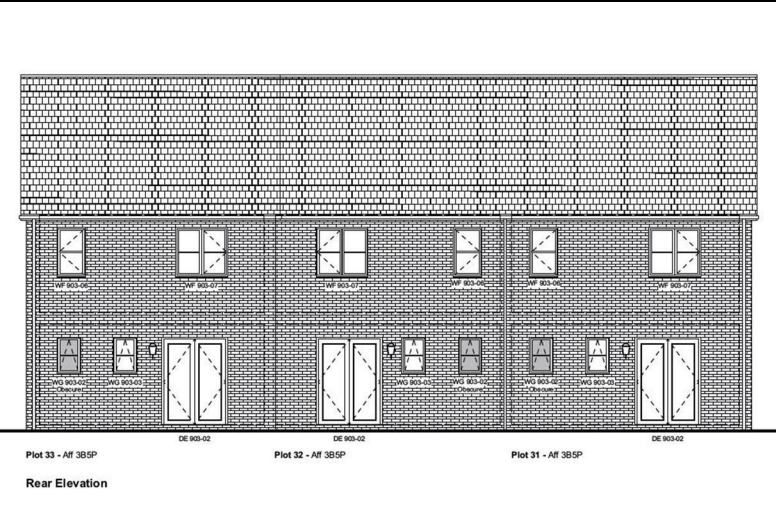
65 Oakfields View, Credenhill, HR4 7FL

**35% Shared ownership £122,500**





# Plot 32 Oakfields "Type 1001" - 35% Share



## Description

Plot 32 Oakfields View Purchase Price £122,500 35% Share  
 Total Rent £567.66 pcm  
 Ready to occupy August 2024 - AVAILABLE TO RESERVE NOW

Please note there is an 80% staircasing restriction on these homes.

If you would like to apply for this property, please complete our online application form via our Signature Website

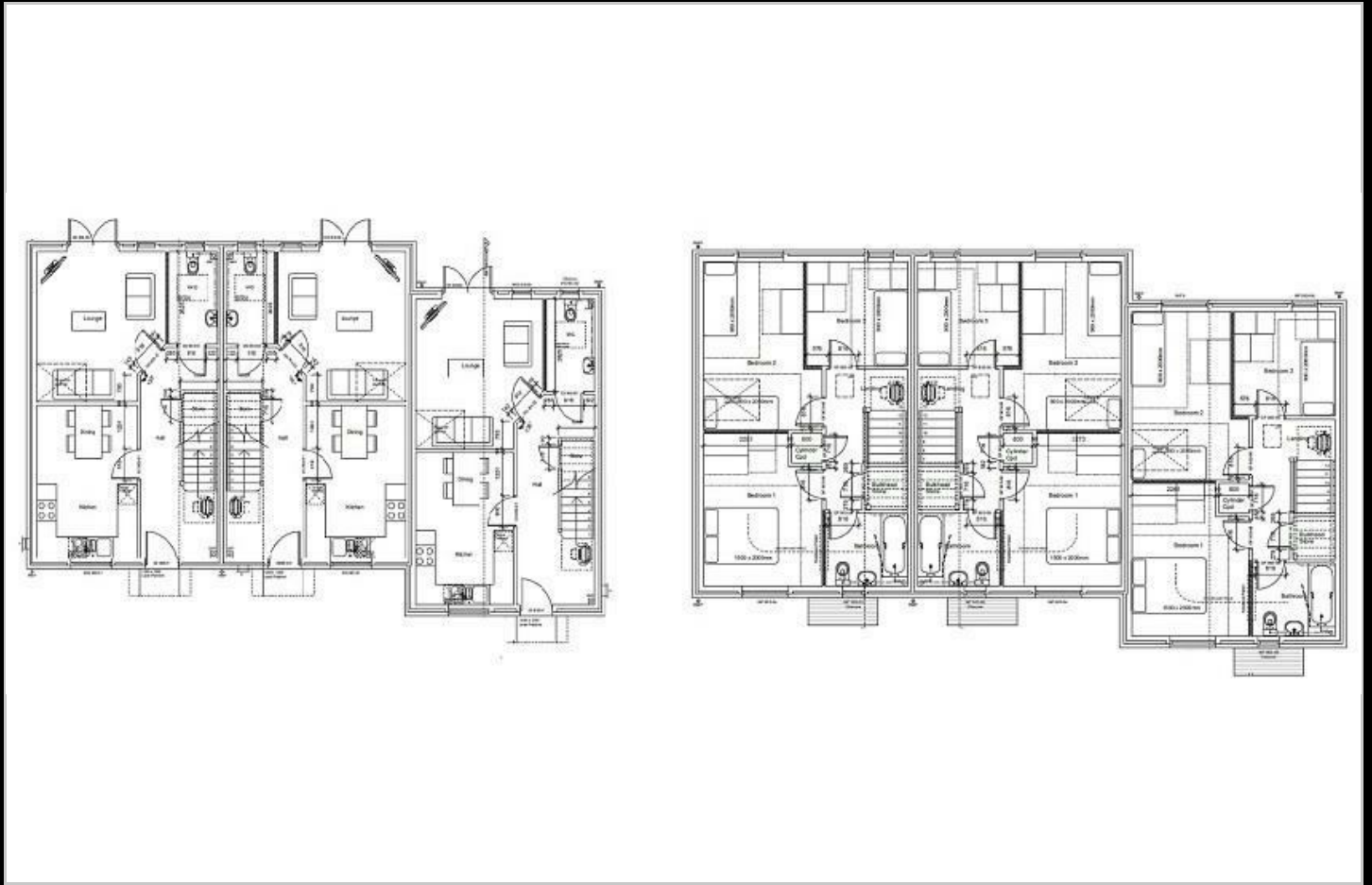
All images/photographs are for illustrative purposes only

- New Build
- 2 Parking Spaces
- Fitted kitchen with oven, hob & extractor
- near Hereford
- Downstairs cloakroom
- Mid Terrace
- Vinyl flooring to wet areas
- Turf to rear garden
- 3 bedrooms
- uPVC windows

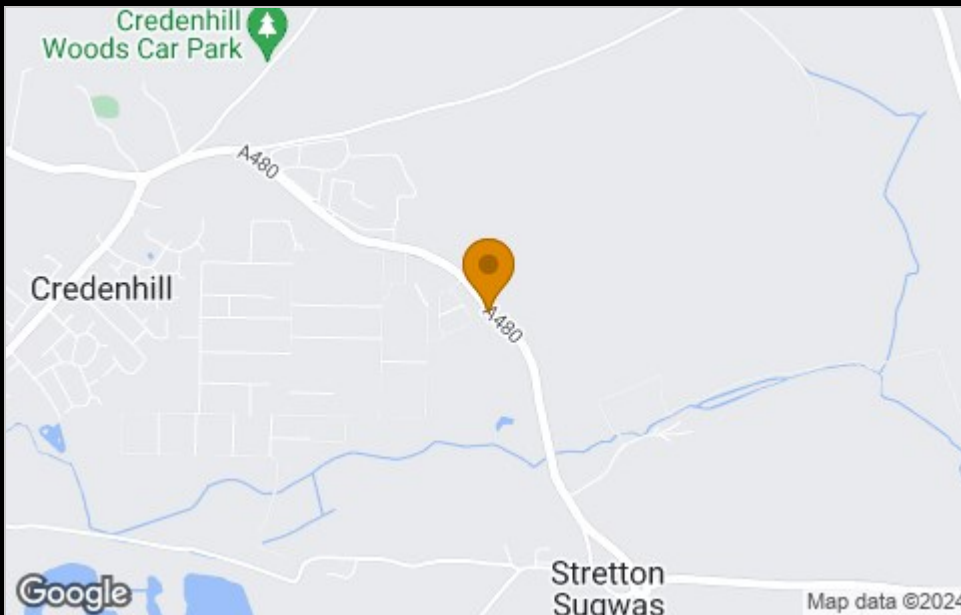




## Floor Plan



## Area Map



## Viewing

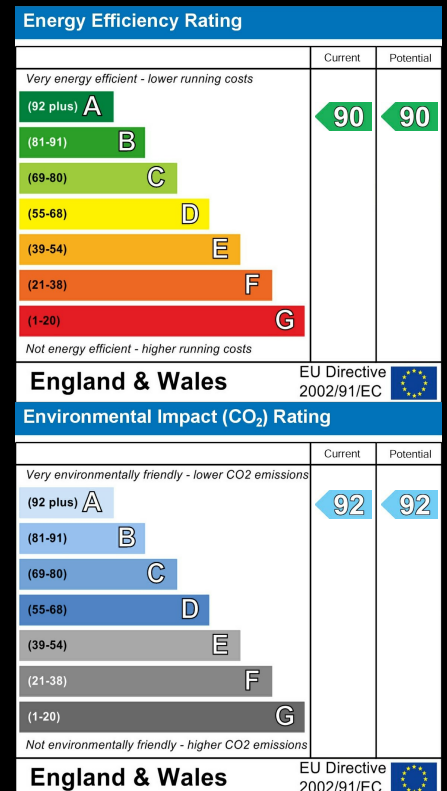
Please contact our Oakfields Sales Advisor on 07790 336902 if you wish to arrange a viewing appointment for this property or require further information.

These particulars, whilst believed to be accurate are set out as a general outline only for guidance and do not constitute any part of an offer or contract. Intending purchasers should not rely on them as statements of representation of fact, but must satisfy themselves by inspection or otherwise as to their accuracy. No person in this firm's employment has the authority to make or give any representation or warranty in respect of the property.

4040 Lakeside, Solihull, West Midlands, B37 7YN

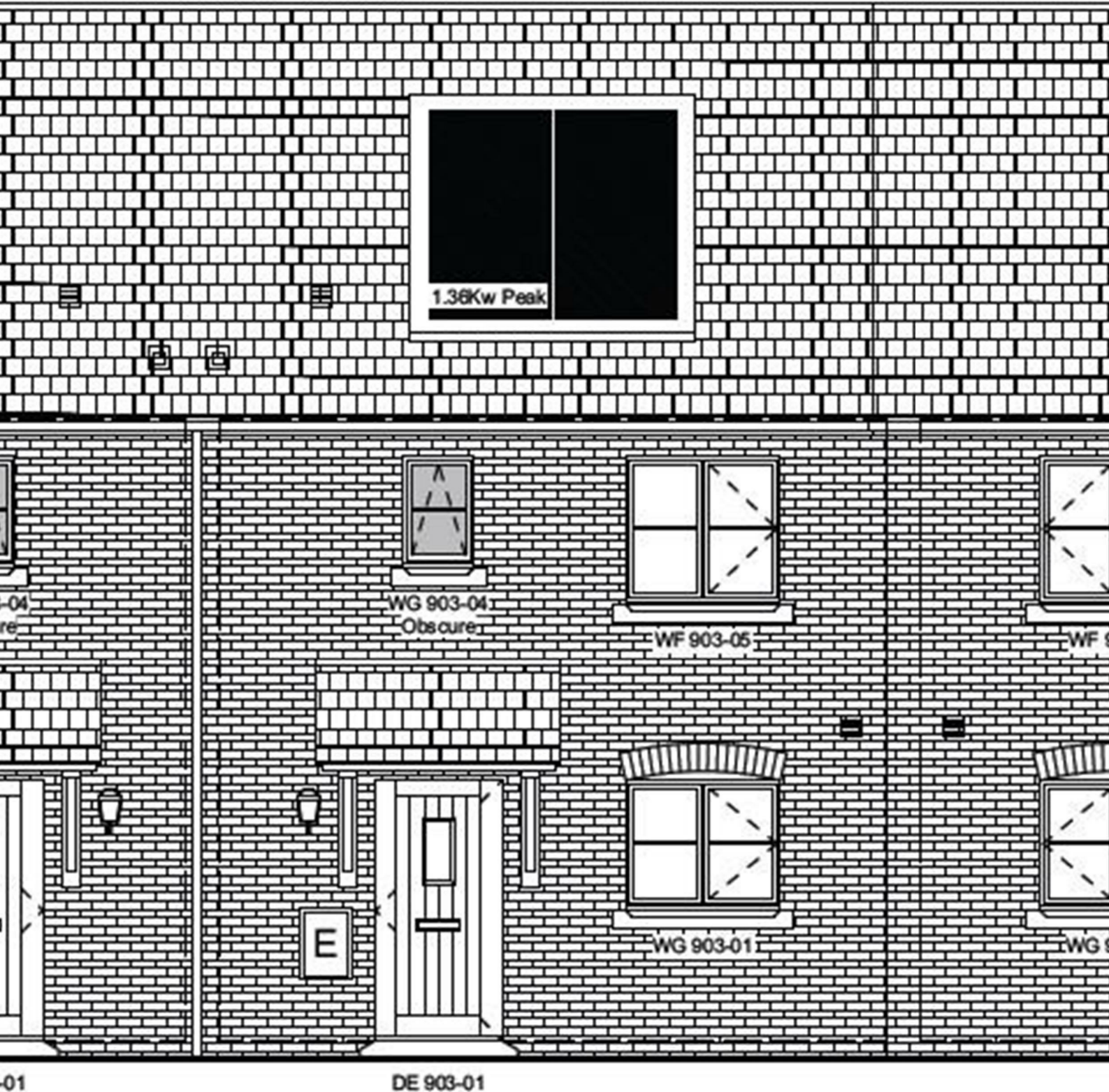
Email: [sales@citizenhousing.org.uk](mailto:sales@citizenhousing.org.uk) or visit [www.citizenhousing.org.uk](http://www.citizenhousing.org.uk)

## Energy Efficiency Graph





CITIZEN



## Plot 33 Oakfields "Type 1001" - 35% Share

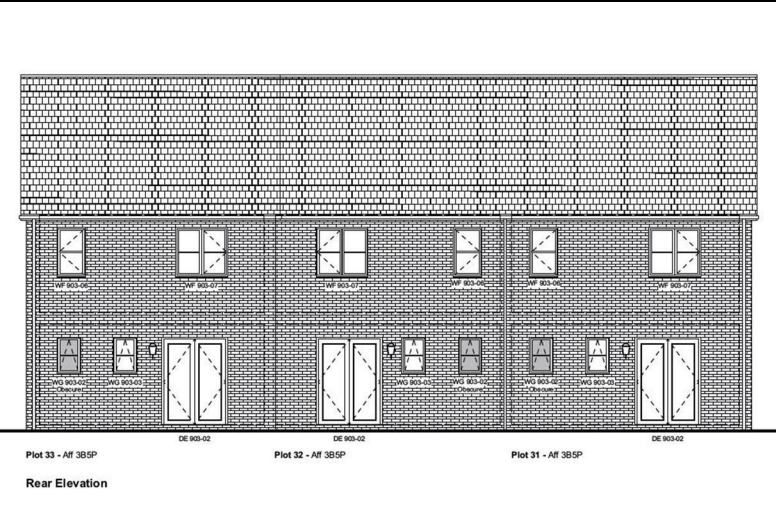
67 Oakfields View, Credenhill, HR4 7FL

**35% Shared ownership £123,375**





# Plot 33 Oakfields "Type 1001" - 35% Share



## Description

Plot 33 Oakfields View Purchase Price £123,375 35% Share  
 Total Rent £571.39 pcm  
 Ready to occupy August 2024 - AVAILABLE TO RESERVE NOW

Please note there is an 80% staircasing restriction on these homes.

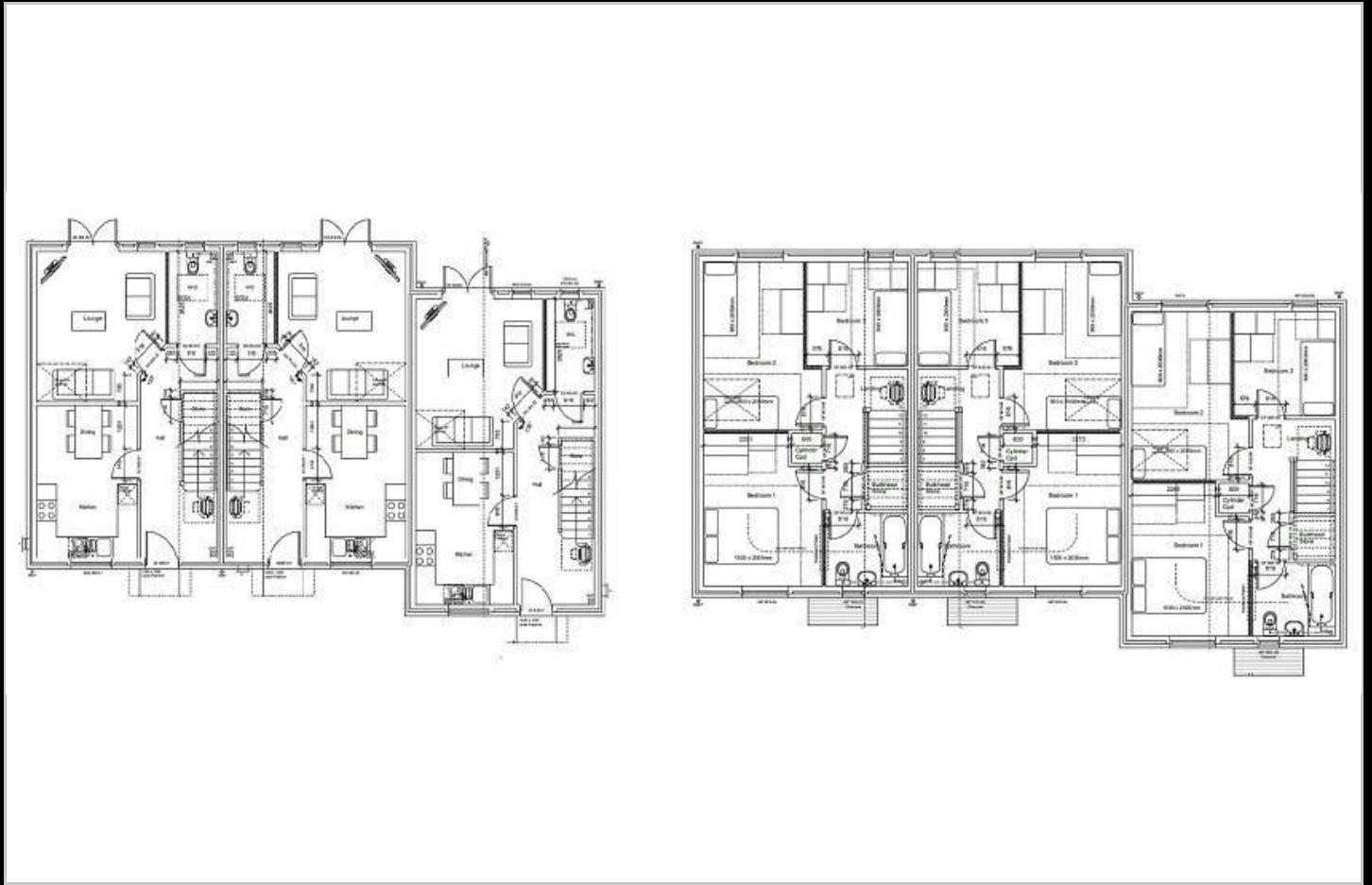
If you would like to apply for this property, please complete our online application form via our Signature Website

All images/photographs are for illustrative purposes only

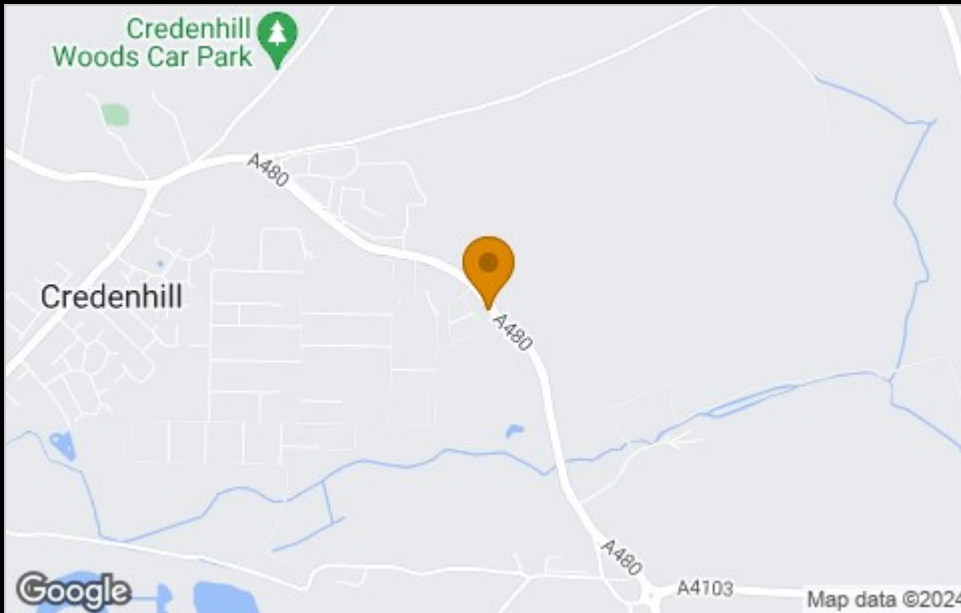
- New Build
- 2 Parking Spaces
- Fitted kitchen with oven, hob & extractor
- near Hereford
- Downstairs cloakroom
- End Terrace
- Vinyl flooring to wet areas
- Turf to rear garden
- 3 bedrooms
- uPVC windows



## Floor Plan



## Area Map



## Viewing

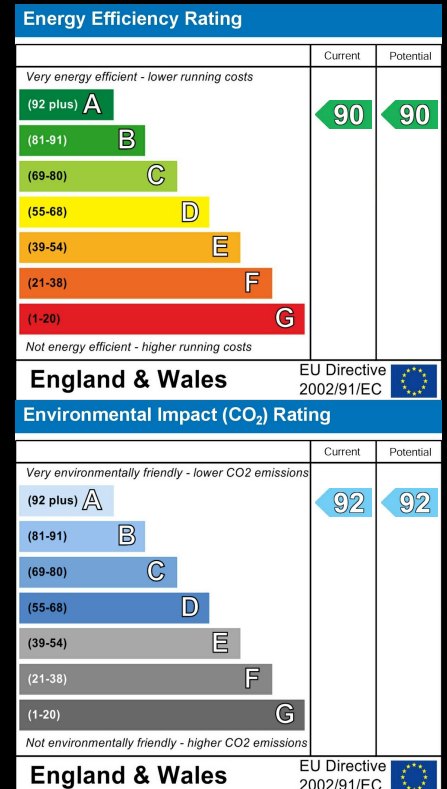
Please contact our Oakfields Sales Advisor on 07790 336902 if you wish to arrange a viewing appointment for this property or require further information.

These particulars, whilst believed to be accurate are set out as a general outline only for guidance and do not constitute any part of an offer or contract. Intending purchasers should not rely on them as statements of representation of fact, but must satisfy themselves by inspection or otherwise as to their accuracy. No person in this firm's employment has the authority to make or give any representation or warranty in respect of the property.

4040 Lakeside, Solihull, West Midlands, B37 7YN

Email: [sales@citizenhousing.org.uk](mailto:sales@citizenhousing.org.uk) or visit [www.citizenhousing.org.uk](http://www.citizenhousing.org.uk)

## Energy Efficiency Graph







CITIZEN



## Plot 55 Oakfields "Type 860" - 40% Share

26 Oakfields View, Credenhill, HR4 7FL

**40% Shared ownership £128,000**





# Plot 55 Oakfields "Type 860" - 40% Share



## Description

Plot 10 Oakfields View Purchase price £128,000 40% Share  
Total Rent £453.87 pcm (plus Management & Service Charge to be confirmed)  
Please note there is an 80% staircasing restriction on these homes.

If you would like to apply for this property, please complete our online application form via our Signature Website

Ready to occupy February 2024

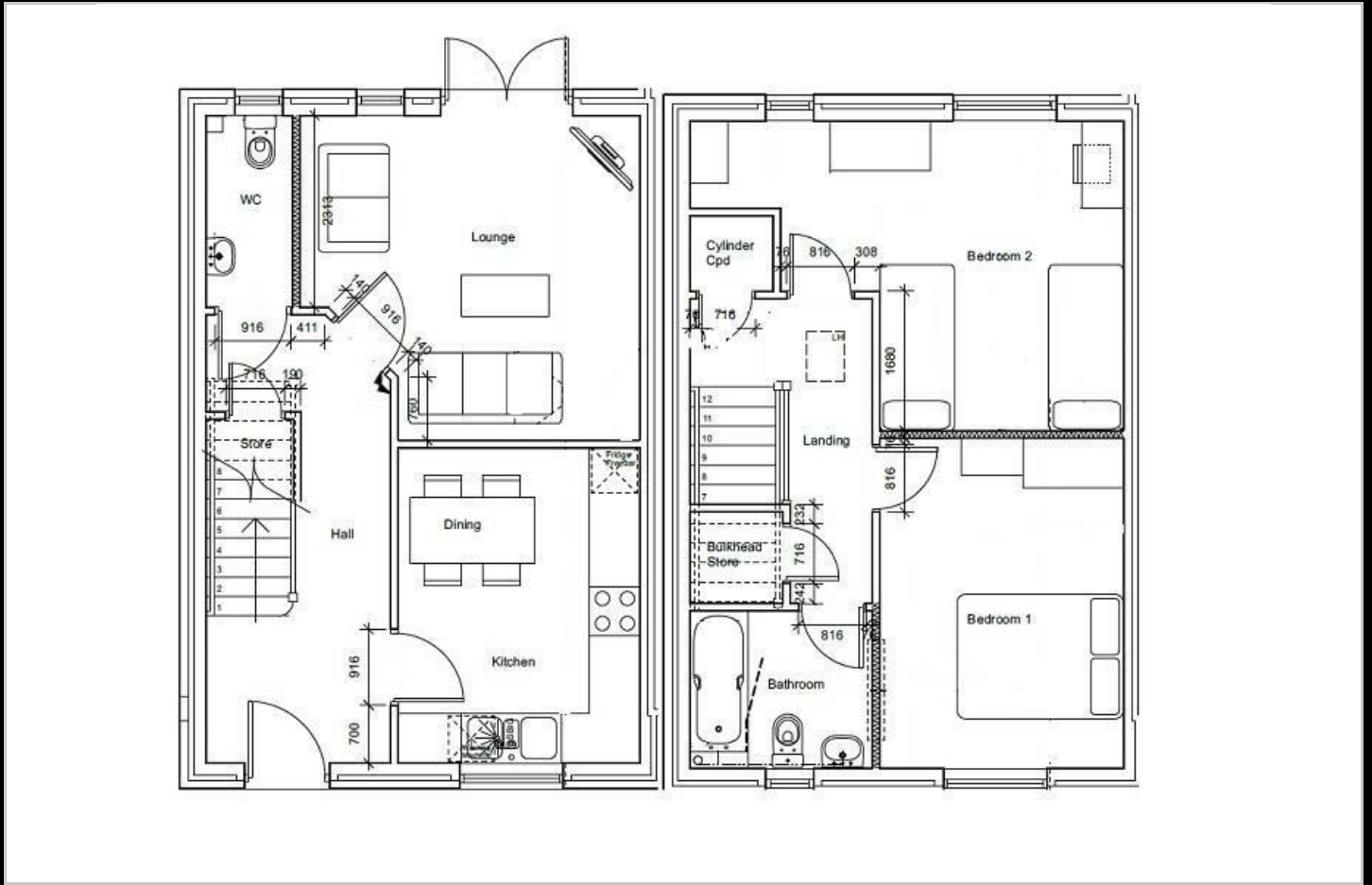
All images/photographs are for illustrative purposes only

- New Build
- 2 Parking Spaces
- Fitted kitchen with oven, hob & extractor
- near Hereford
- Downstairs cloakroom
- Semi Detached
- Vinyl flooring to wet areas
- Turf to rear garden
- 2 spacious bedrooms
- uPVC windows

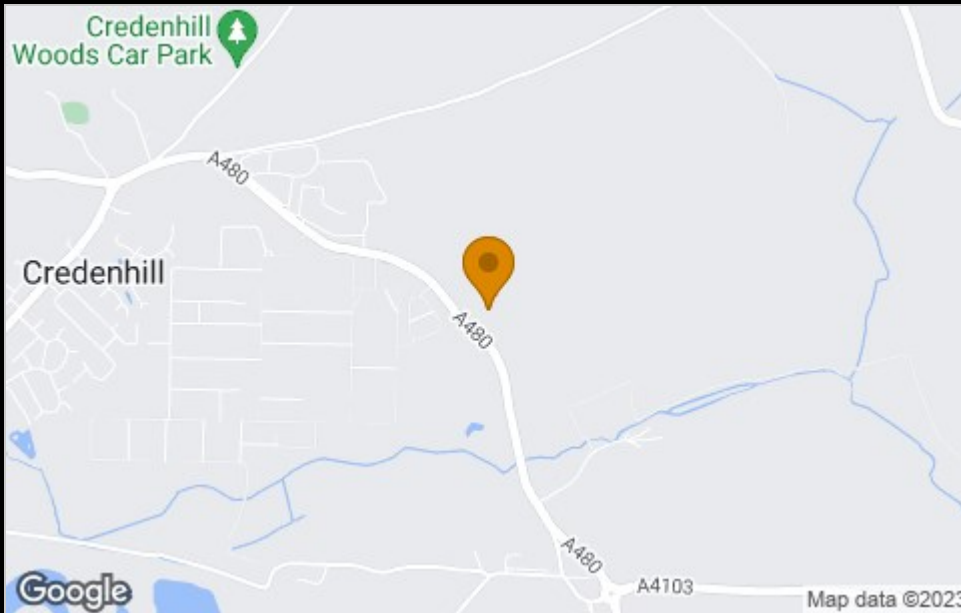




## Floor Plan



## Area Map



## Viewing



Please contact our Sales Advisor on 07790336902 if you wish to arrange a viewing appointment for this property or require further information.

These particulars, whilst believed to be accurate are set out as a general outline only for guidance and do not constitute any part of an offer or contract. Intending purchasers should not rely on them as statements of representation of fact, but must satisfy themselves by inspection or otherwise as to their accuracy. No person in this firm's employment has the authority to make or give any representation or warranty in respect of the property.

4040 Lakeside, Solihull, West Midlands, B37 7YN

Email: [sales@citizenhousing.org.uk](mailto:sales@citizenhousing.org.uk) or visit [www.citizenhousing.org.uk](http://www.citizenhousing.org.uk)

## Energy Efficiency Graph

Energy Efficiency Rating		Current	Potential
Very energy efficient - lower running costs			
(92 plus) <b>A</b>			
(81-91) <b>B</b>			
(69-80) <b>C</b>			
(55-68) <b>D</b>			
(39-54) <b>E</b>			
(21-38) <b>F</b>			
(1-20) <b>G</b>			
Not energy efficient - higher running costs			
<b>England &amp; Wales</b>		EU Directive 2002/91/EC 	
Environmental Impact (CO <sub>2</sub> ) Rating		Current	Potential
Very environmentally friendly - lower CO <sub>2</sub> emissions			
(92 plus) <b>A</b>			
(81-91) <b>B</b>			
(69-80) <b>C</b>			
(55-68) <b>D</b>			
(39-54) <b>E</b>			
(21-38) <b>F</b>			
(1-20) <b>G</b>			
Not environmentally friendly - higher CO <sub>2</sub> emissions			
<b>England &amp; Wales</b>		EU Directive 2002/91/EC 	



CITIZEN



## Plot 57 Oakfields "Type 1001" - 35% Share

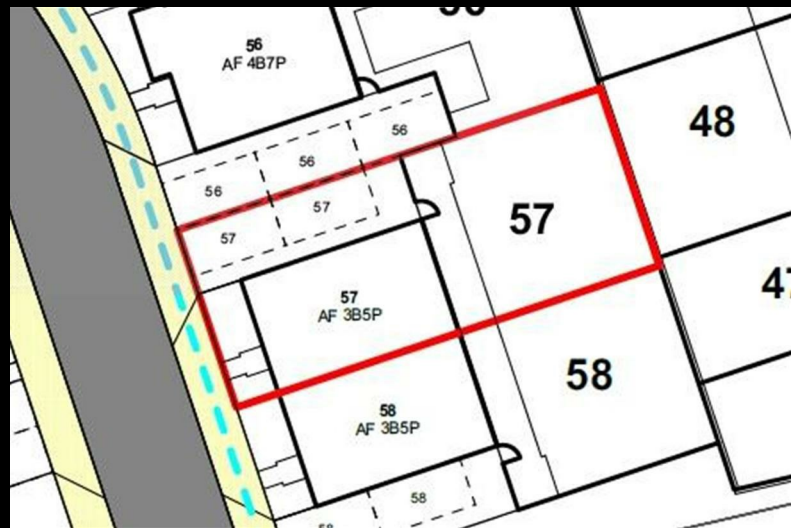
22 Oakfields View, Credenhill, HR4 7FL

**35% Shared ownership £124,250**





# Plot 57 Oakfields "Type 1001" - 35% Share



## Description

Plot 57 Oakfields View Purchase Price £124,250 35% Share  
Total Rent £575.11 pcm

Ready to occupy March 2024

Please note there is an 80% staircasing restriction on these homes.

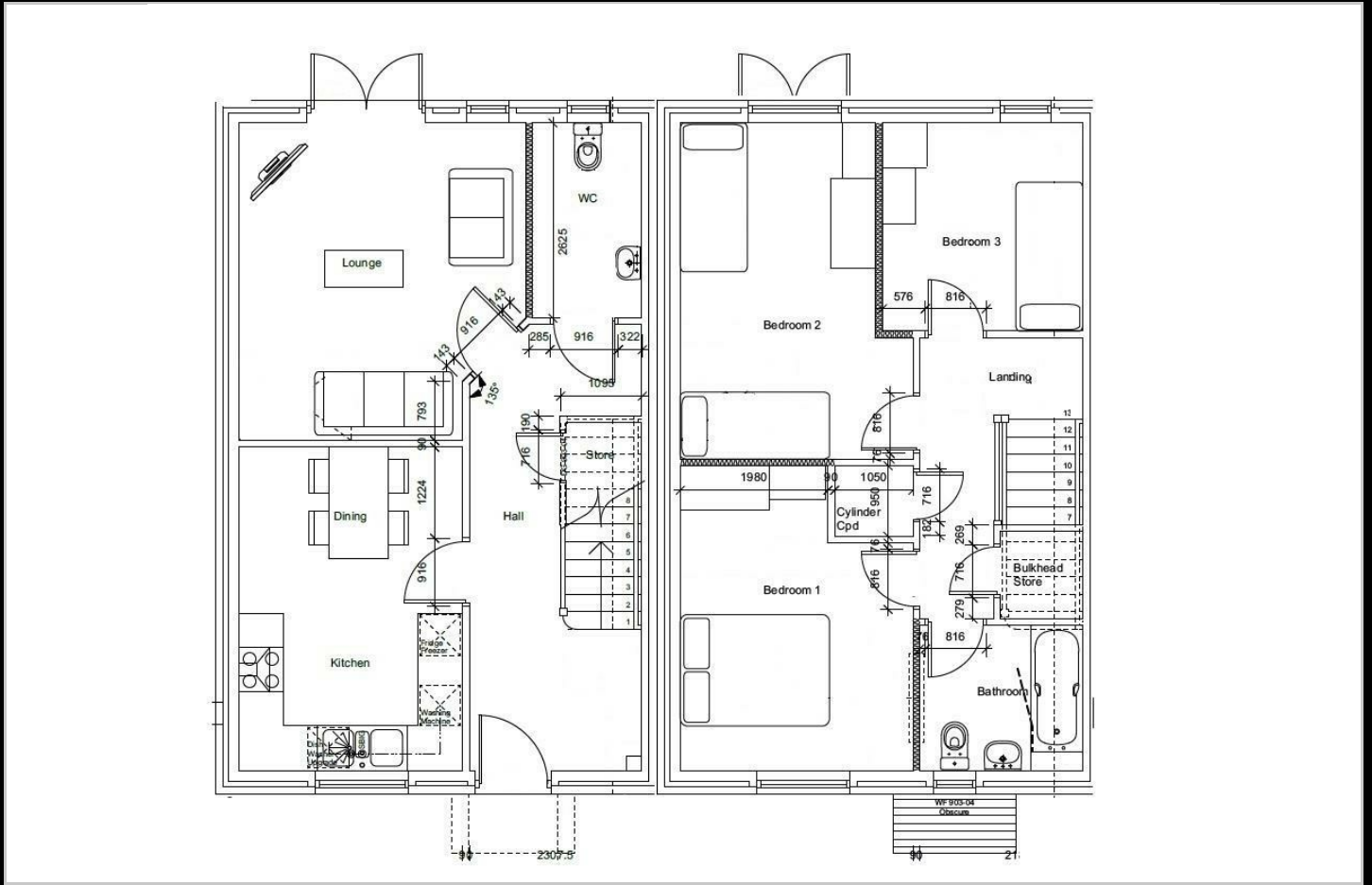
If you would like to apply for this property, please complete our online application form via our Signature Website

All images/photographs are for illustrative purposes only

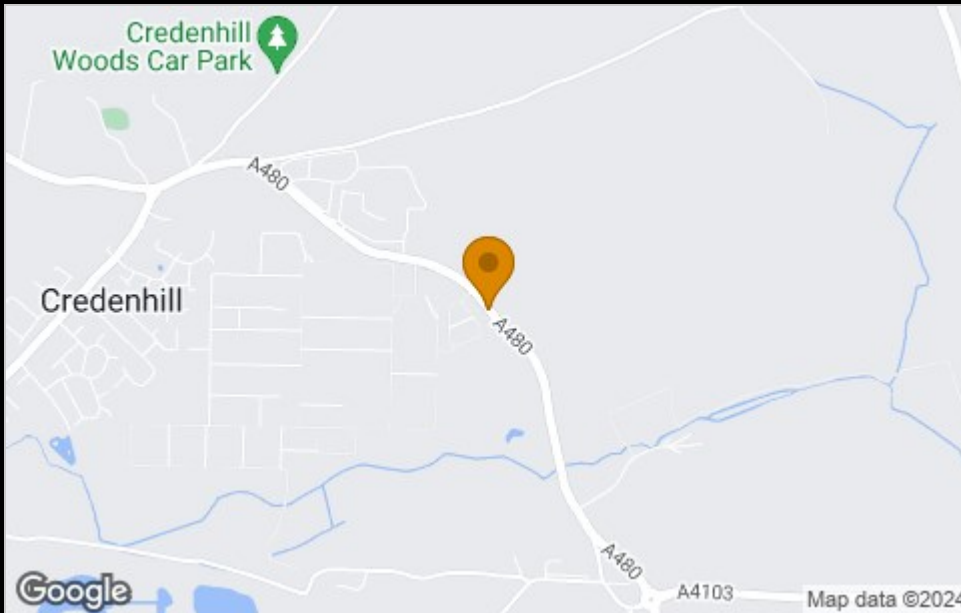
- New Build
- 2 Parking Spaces
- Fitted kitchen with oven, hob & extractor
- near Hereford
- Downstairs cloakroom
- Semi Detached
- Vinyl flooring to wet areas
- Turf to rear garden
- 3 bedrooms
- uPVC windows



## Floor Plan



## Area Map



## Viewing

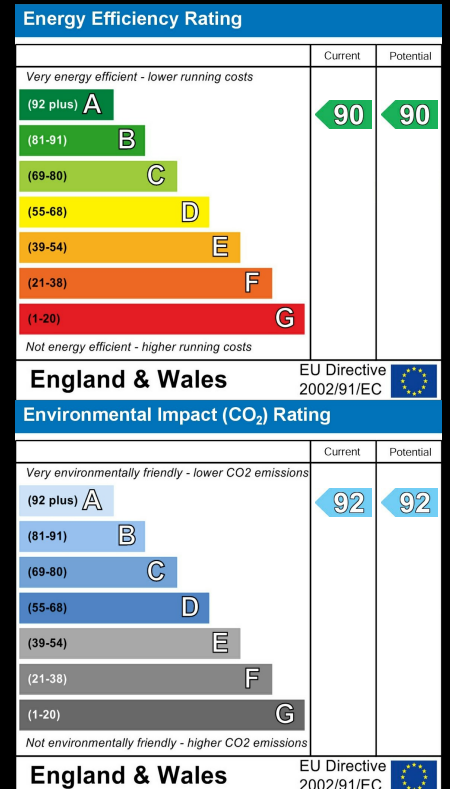
Please contact our Sales Advisor on 07790 336902 if you wish to arrange a viewing appointment for this property or require further information.

These particulars, whilst believed to be accurate are set out as a general outline only for guidance and do not constitute any part of an offer or contract. Intending purchasers should not rely on them as statements of representation of fact, but must satisfy themselves by inspection or otherwise as to their accuracy. No person in this firm's employment has the authority to make or give any representation or warranty in respect of the property.

4040 Lakeside, Solihull, West Midlands, B37 7YN

Email: [sales@citizenhousing.org.uk](mailto:sales@citizenhousing.org.uk) or visit [www.citizenhousing.org.uk](http://www.citizenhousing.org.uk)

## Energy Efficiency Graph







CITIZEN



## Plot 58 Oakfields "Type 1001" - 35% Share

20 Oakfields View, Credenhill, HR4 7FL

**35% Shared ownership £124,250**



# Plot 58 Oakfields "Type 1001" - 35% Share



## Description

Plot 58 Oakfields View Purchase Price £124,250 35% Share  
Total Rent £575.11 pcm

Ready to occupy March 2024

Please note there is an 80% staircasing restriction on these homes.

If you would like to apply for this property, please complete our online application form via our Signature Website

All images/photographs are for illustrative purposes only

- New Build
- 2 Parking Spaces
- Fitted kitchen with oven, hob & extractor
- near Hereford
- Downstairs cloakroom
- Semi Detached
- Vinyl flooring to wet areas
- Turf to rear garden
- 3 bedrooms
- uPVC windows

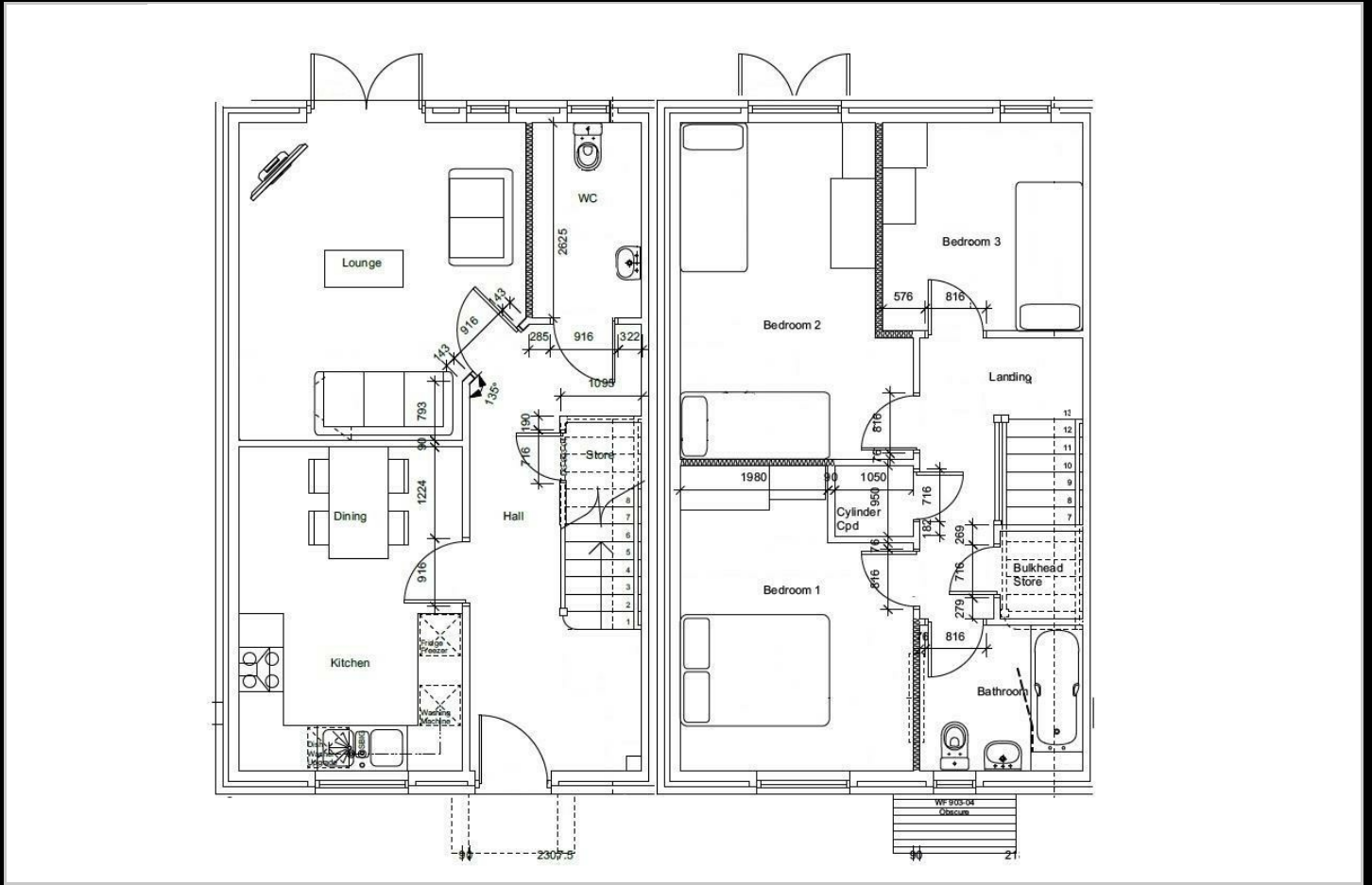




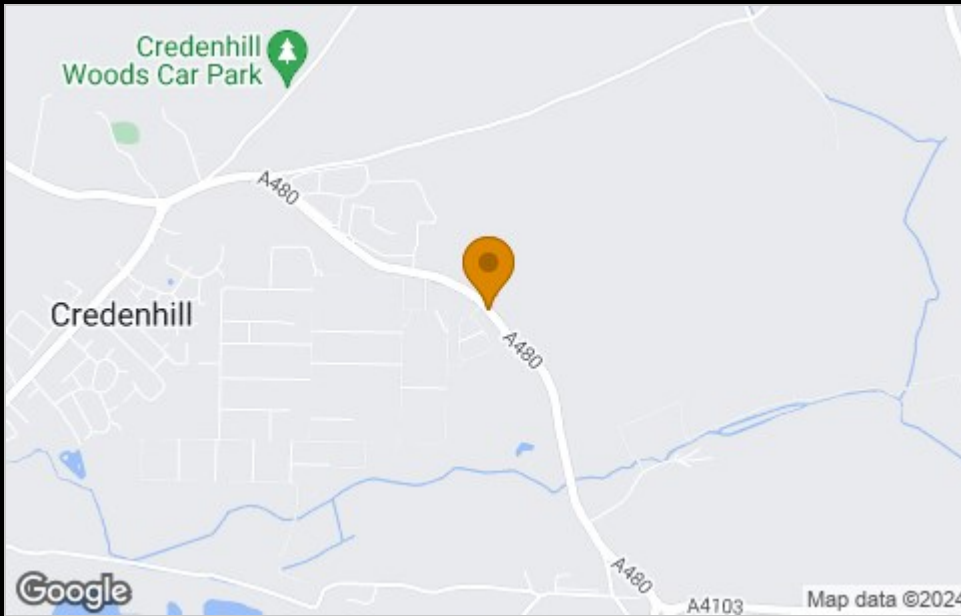




## Floor Plan



## Area Map



## Viewing

Please contact our Citizen Sales Advisor on 07790 336902 if you wish to arrange a viewing appointment for this property or require further information.

These particulars, whilst believed to be accurate are set out as a general outline only for guidance and do not constitute any part of an offer or contract. Intending purchasers should not rely on them as statements of representation of fact, but must satisfy themselves by inspection or otherwise as to their accuracy. No person in this firm's employment has the authority to make or give any representation or warranty in respect of the property.

4040 Lakeside, Solihull, West Midlands, B37 7YN

Email: [sales@citizenhousing.org.uk](mailto:sales@citizenhousing.org.uk) or visit [www.citizenhousing.org.uk](http://www.citizenhousing.org.uk)

## Energy Efficiency Graph

Energy Efficiency Rating		Current	Potential
Very energy efficient - lower running costs			
(92 plus) <b>A</b>		90	90
(81-91) <b>B</b>			
(69-80) <b>C</b>			
(55-68) <b>D</b>			
(39-54) <b>E</b>			
(21-38) <b>F</b>			
(1-20) <b>G</b>			
Not energy efficient - higher running costs			
<b>England &amp; Wales</b>		EU Directive 2002/91/EC	
Environmental Impact (CO <sub>2</sub> ) Rating		Current	Potential
Very environmentally friendly - lower CO <sub>2</sub> emissions			
(92 plus) <b>A</b>		92	92
(81-91) <b>B</b>			
(69-80) <b>C</b>			
(55-68) <b>D</b>			
(39-54) <b>E</b>			
(21-38) <b>F</b>			
(1-20) <b>G</b>			
Not environmentally friendly - higher CO <sub>2</sub> emissions			
<b>England &amp; Wales</b>		EU Directive 2002/91/EC	