

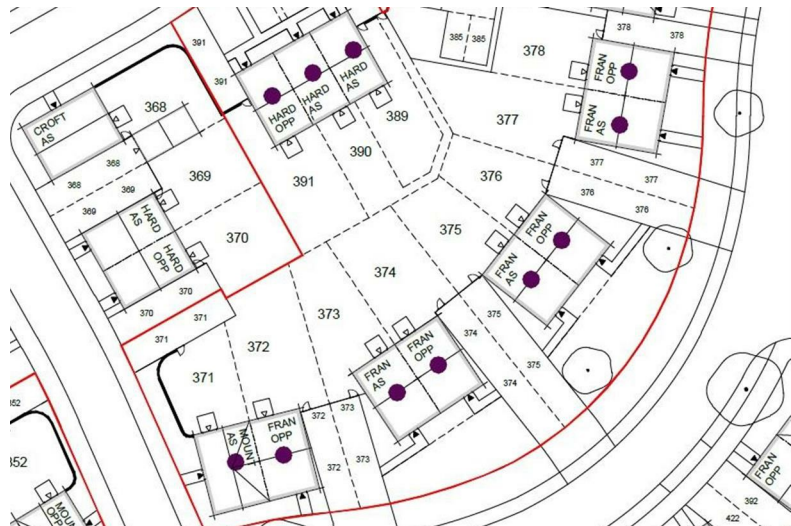


"The Francis" Park Gate (no ensuite)  
Plots 372,373,374,375,376,377,378

**35% Shared ownership £94,500**



# "The Francis"



## Description

35% share available from £94,500

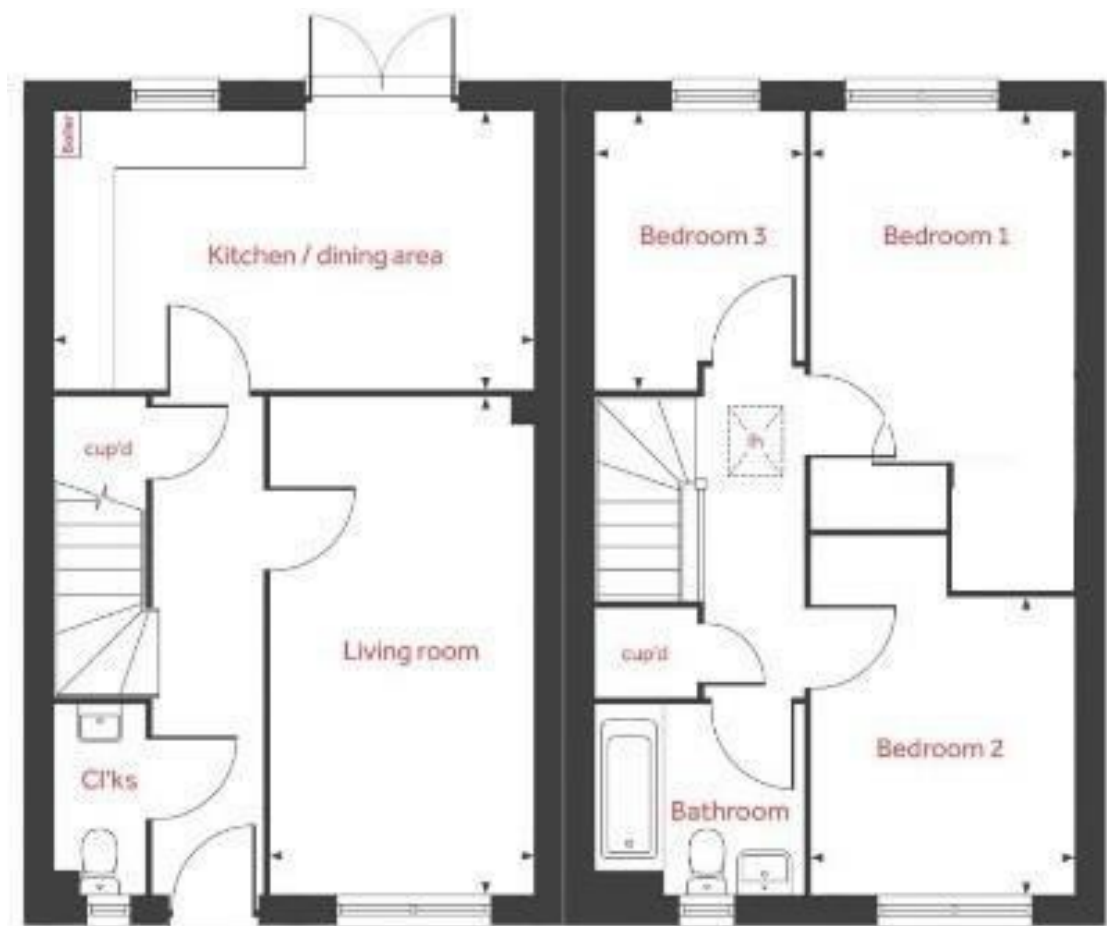
Total rent £460.04 pcm

Ready to occupy approx late spring/summer 2022-Available to reserve now

You will need to also register with the local authority to purchase a property on this development, please visit - [www.homechoiceplus.org.uk/householdregistrationform](http://www.homechoiceplus.org.uk/householdregistrationform)

- Floor tiles to wet areas
- Turf to front and rear gardens
- 2 Parking spaces
- Semi detached
- Brushed steel oven, ceramic hob & extractor
- Shower above bath with screen
- 1.8m Fencing to rear
- 3 Spacious bedrooms
- Downstairs cloakroom
- Near Kidderminster

## Floor Plan





"The Hardwick" Park Gate  
Plots 441,442,450,451,452

**40% Shared ownership £92,000**



2



1



1



# "The Hardwick"



## Description

40% share available from £92,000

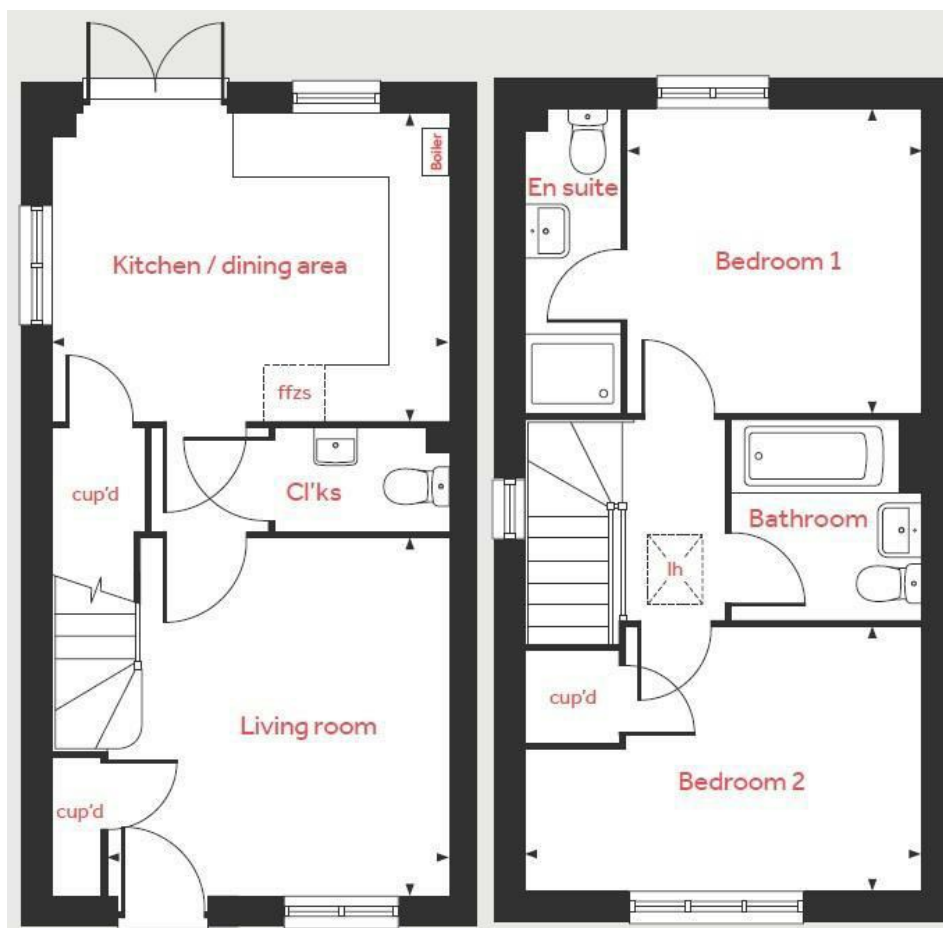
Total rent £373.41 pcm

Ready to occupy approx Autumn 2022 - Available to reserve now

You will need to also register with the local authority to purchase a property on this development, please visit - [www.homechoiceplus.org.uk/householdregistrationform](http://www.homechoiceplus.org.uk/householdregistrationform)

- Vinyl flooring to wet areas
- Turf to front and rear gardens
- 2 Parking spaces
- Semi detached
- Brushed steel oven, ceramic hob & extractor
- En suite to master bedroom
- 1.8m Fencing to rear gardens
- 2 spacious bedrooms
- Downstairs cloakroom
- near Kidderminster

## Floor Plan



### Ground floor

Living room	3.70m x 3.51m	12'2" x 11'6"
Kitchen / dining area	4.08m x 3.17m	13'5" x 10'5"

### First floor

Bedroom 1	3.16m x 3.01m	10'4" x 9'11"
Bedroom 2	4.08m x 2.70m	13'5" x 8'10"



"The Francis" Park Gate  
(with ensuite)

**35% Shared ownership £94,500**



# "The Francis"



★ = Shared Ownership Plots

## Description

35% share available from £94,500

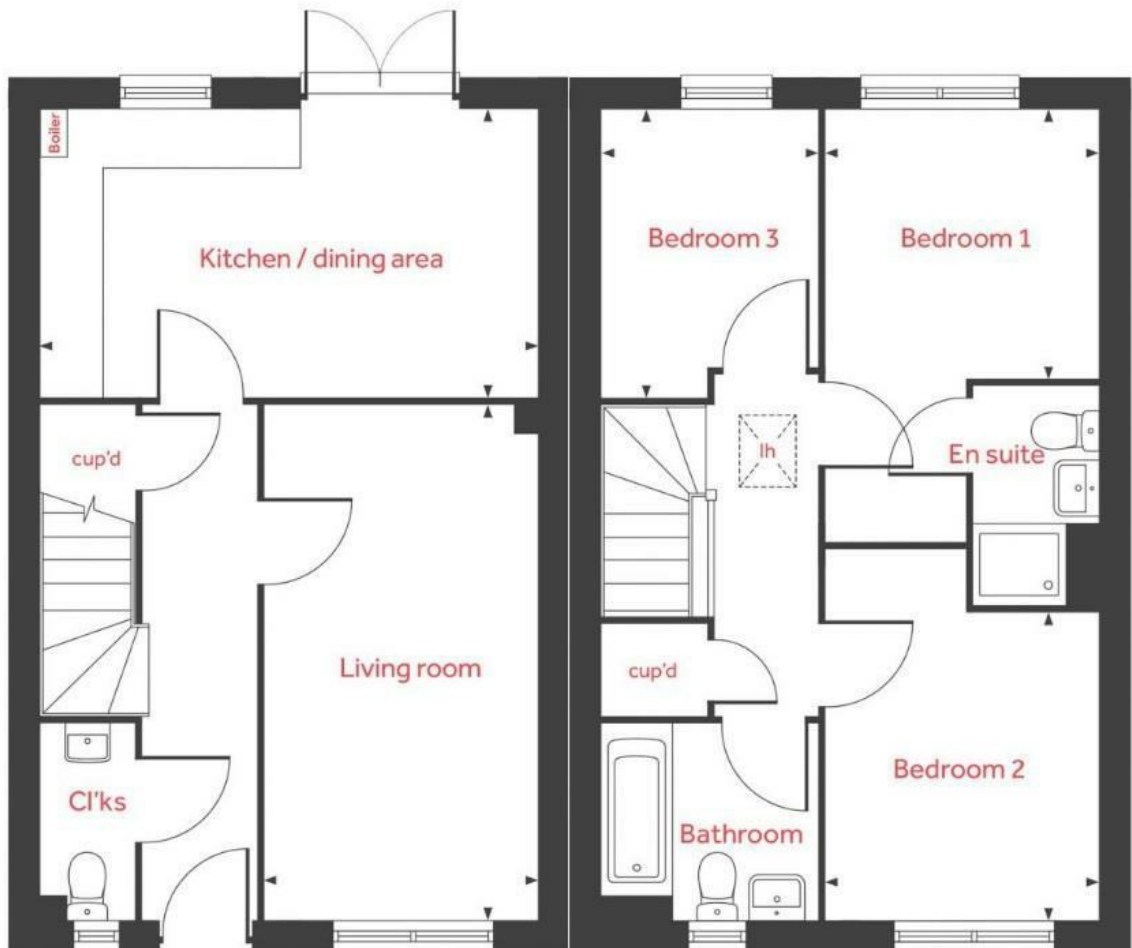
Total rent £460.04 pcm

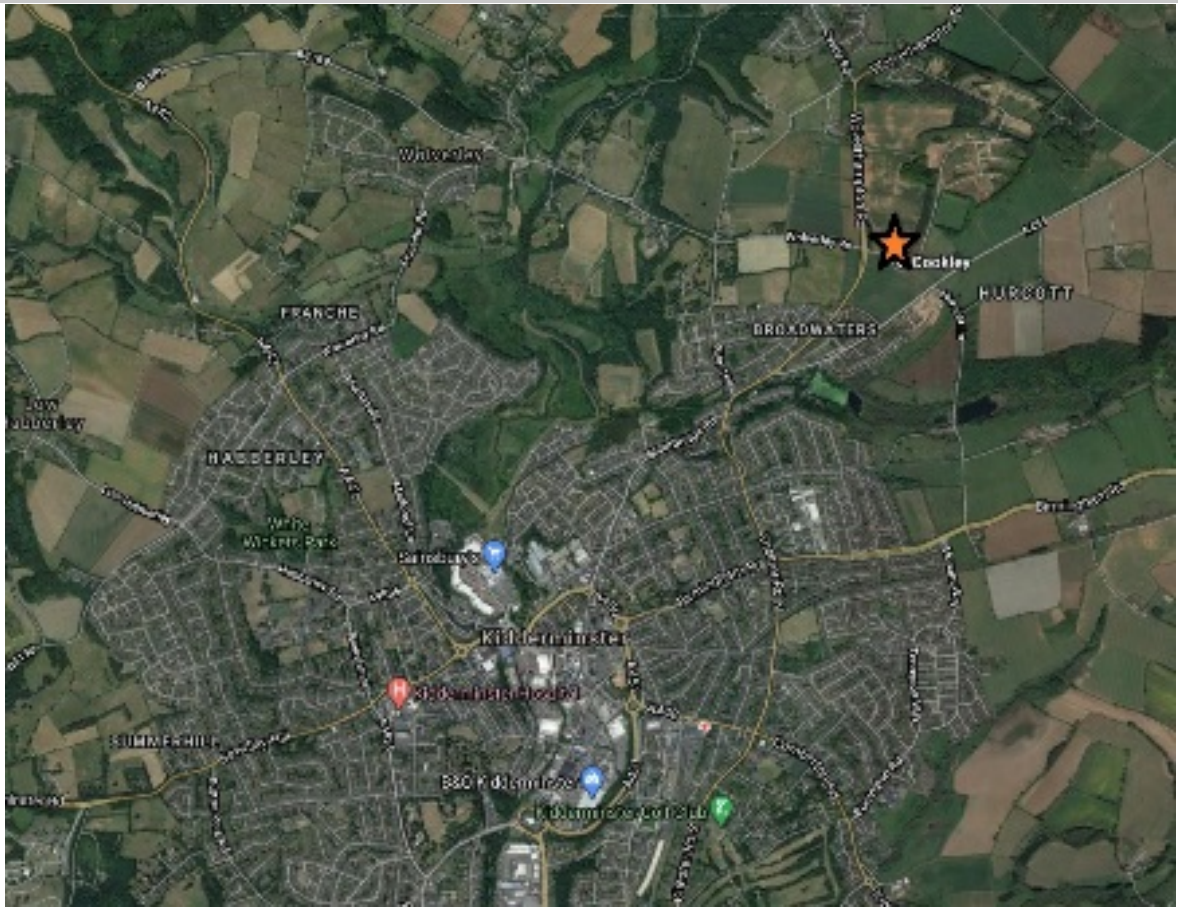
Ready to occupy approx late Spring/summer 2022-Available to reserve now

You will need to also register with with the local authority to purchase a property on this development, please visit - [www.homechoiceplus.org.uk/householdregistrationform](http://www.homechoiceplus.org.uk/householdregistrationform)

- Vinyl flooring to wet areas
- Turf to front and rear gardens
- 2 Parking spaces
- Semidetached
- Brushed steel oven, ceramic hob & extractor
- Shower above bath with screen
- 1.8m Fencing to rear
- 3 Spacious bedrooms
- Downstairs cloakroom
- Near Kidderminster

## Floor Plan





## Area Map



## Viewing

Please contact Kellie on 07807 787747 if you wish to arrange a viewing appointment for this property or require further information.

## Energy Efficiency Graph

Energy Efficiency Rating		
	Current	Potential
Very energy efficient - lower running costs		
(92 plus) <b>A</b>		
(81-91) <b>B</b>		
(69-80) <b>C</b>		
(55-68) <b>D</b>		
(39-54) <b>E</b>		
(21-38) <b>F</b>		
(1-20) <b>G</b>		
Not energy efficient - higher running costs		
England & Wales		EU Directive 2002/91/EC
Environmental Impact (CO <sub>2</sub> ) Rating		
	Current	Potential
Very environmentally friendly - lower CO <sub>2</sub> emissions		
(92 plus) <b>A</b>		
(81-91) <b>B</b>		
(69-80) <b>C</b>		
(55-68) <b>D</b>		
(39-54) <b>E</b>		
(21-38) <b>F</b>		
(1-20) <b>G</b>		
Not environmentally friendly - higher CO <sub>2</sub> emissions		
England & Wales		EU Directive 2002/91/EC

These particulars, whilst believed to be accurate are set out as a general outline only for guidance and do not constitute any part of an offer or contract. Intending purchasers should not rely on them as statements of representation of fact, but must satisfy themselves by inspection or otherwise as to their accuracy. No person in this firm's employment has the authority to make or give any representation or warranty in respect of the property.