



## Plot 66 Purbeck Village-40% Share

30 Whittaker Way, Leamington Spa, CV34 8AX

**Ready to Occupy £111,288**





# Plot 66 Purbeck Village-40% Share



## Description

Plot 66 Purbeck Village - 40% Share of property available from £111,288

Total Rent and service charge £395.01 pcm

READY TO OCCUPY

All applicants must register with the Help to Buy agent at <https://www.helptobuyagent2.org.uk/apply-online>

- Fitted kitchen with oven, hob and extractor
- Downstairs cloakroom
- Turf to rear garden
- 2 allocated parking spaces
- New Build
- Vinyl flooring to wet areas
- UPVC double glazing
- Gas central heating
- NHBC Guarantee
- Mid terraced

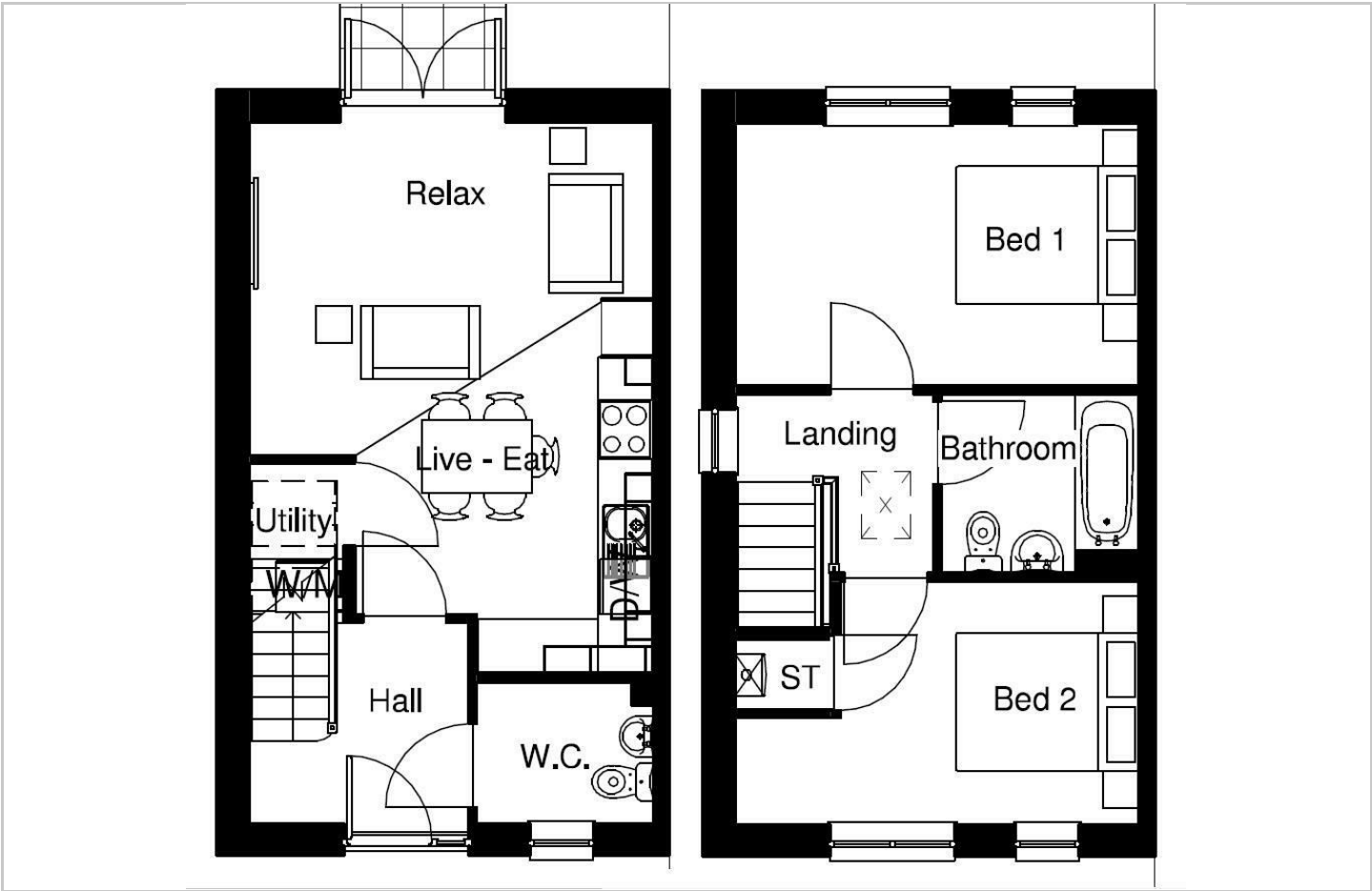








Floor Plan



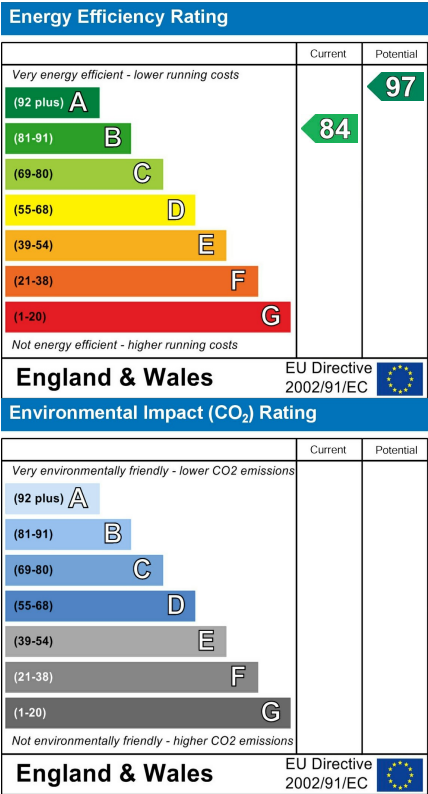
Area Map



Viewing

Please contact the Sales Team on 08450 132713 if you wish to arrange a viewing appointment for this property or require further information.

Energy Efficiency Graph



These particulars, whilst believed to be accurate are set out as a general outline only for guidance and do not constitute any part of an offer or contract. Intending purchasers should not rely on them as statements of representation of fact, but must satisfy themselves by inspection or otherwise as to their accuracy. No person in this firms employment has the authority to make or give any representation or warranty in respect of the property.