

If you want to own your own home, but don't think you can afford to, then we may be able to help. Read on for information about our schemes designed to help you get the home of your dreams.

WOODLANDS PARK

Shared Ownership

Shared ownership helps you get on the property ladder if you aren't financially able to purchase 100% of a property on the open market.

Here's how it works...

- You will source your own mortgage and purchase one of our properties in shares.
- The minimum purchase share of a property is 25%.
- You will pay a rental figure of 2.75%* of the remaining share that we own.
- You are able to buy bigger shares initially or you can buy more shares in the future. This is called 'staircasing'.

What you need to do

When you find a property you like:

- Contact a financial advisor to provide you with a provisional agreement in principle.
- Register with **www.helptobuyagent2.org.uk**.
- Visit our website at **www.signaturenewhomes.co.uk**, to view all of our available homes.
- We will then process your application in order to see if you are eligible to purchase a share in one of our new properties.

We also have resale properties available to view, please visit **www.signaturenewhomes.co.uk** and follow the find a home icon.

* Subject to change

Available
NOW
Price
£133,000
for 35%
shared ownership



Elsenham, 3 bedroom semi detached houses with garage, for shared ownership sale, on this brand new development at Blythe Valley, Solihull.

Property Features


- ~ Stylish fully fitted kitchen
- ~ Brushed steel oven, ceramic hob & extractor
- ~ Vinyl flooring to kitchen, bathroom & ensuite
- ~ Shower over bath
- ~ Heated towel rail to bathroom & ensuite
- ~ Ensuite to Bedroom 1

General Features

- ~ Electric heating
- ~ UPVC double glazing
- ~ Turf to rear garden
- ~ Up & over garage door
- ~ Allocated parking
- ~ 10 Year NHBC Guarantee

To contact **CITIZEN**

 08450 132713  www.citizenhousing.org.uk

 4040 Lakeside, Solihull Parkway, Birmingham Business Park, Birmingham, B37 7YN

3 Bedroom Floor layout and room sizes

The information is for guidance only and is not to be relied on as statements or representations of fact and they do not make or give representation or warrant whatsoever and do not form part of any contract. All room measurements shown in metric.

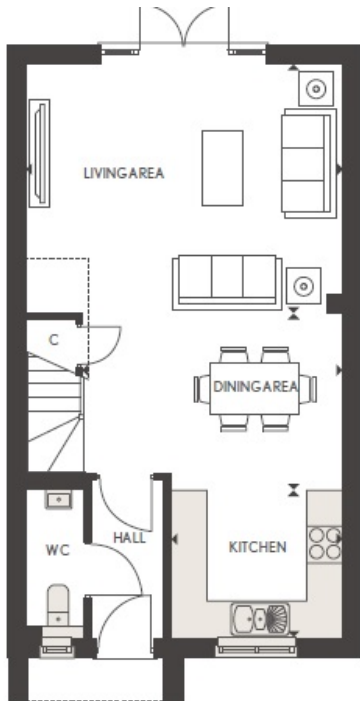


Development
Site Layout



WOODLANDS PARK

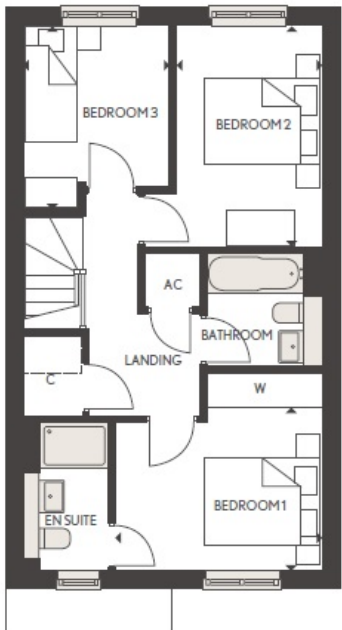
WOODLANDS PARK



Dining area window to houses 63, 66, 69, 72, 75, 81 & 87

GROUND FLOOR

Living Area	5184mm x 4077mm	17'0" x 13'4"
Dining Area	4252mm x 2932mm	13'11" x 9'7"
Kitchen	2837mm x 2450mm	9'4" x 8'0"



Bathroom window to houses 63, 66, 69, 72, 75, 81 & 87

FIRST FLOOR

Bedroom 1	3591mm x 3431mm	11'9" x 11'3"
Bedroom 2	2535mm x 3835mm	8'4" x 12'7"
Bedroom 3	2535mm x 3193mm	8'4" x 10'6"



**3 Bedroom
Semi Detached
with Garage**
Plots 63, 66, 68, 69,
72, 75, 81, 87 & 88

Houses available

Plot	63, 66, 68, 69, 72, 75, 81, 87 & 88
Housetype	3 Bedroom semi detached with garage
	Plots 63 & 66 Now Available
Handover	Available from Autumn 2020
35% Share	£133,000
100% Price	£380,000
Total Monthly Rent	£633.41

For further details please contact our sales team on:

08450 132713

or email: sales@citizenhousing.org.uk

If you want to own your own home, but don't think you can afford to, then we may be able to help. Read on for information about our schemes designed to help you get the home of your dreams.

WOODLANDS PARK

Shared Ownership

Shared ownership helps you get on the property ladder if you aren't financially able to purchase 100% of a property on the open market.

Here's how it works...

- You will source your own mortgage and purchase one of our properties in shares.
- The minimum purchase share of a property is 25%.
- You will pay a rental figure of 2.75%* of the remaining share that we own.
- You are able to buy bigger shares initially or you can buy more shares in the future. This is called 'staircasing'.

What you need to do

When you find a property you like:

- Contact a financial advisor to provide you with a provisional agreement in principle.
- Register with **www.helptobuyagent2.org.uk**.
- Visit our website at **www.signaturenewhomes.co.uk**, to view all of our available homes.
- We will then process your application in order to see if you are eligible to purchase a share in one of our new properties.

We also have resale properties available to view, please visit **www.signaturenewhomes.co.uk** and follow the find a home icon.

* Subject to change



Hartley, 3 bedroom semi detached houses, for shared ownership sale, on this brand new development at Blythe Valley, Solihull.

Property Features


- ~ Stylish fully fitted kitchen
- ~ Brushed steel oven, ceramic hob & extractor
- ~ Vinyl flooring to kitchen, bathroom & ensuite
- ~ Shower over bath
- ~ Heated towel rail to bathroom & ensuite
- ~ Ensuite to Bedroom 1

General Features

- ~ Electric heating
- ~ UPVc double glazing
- ~ Turf to rear garden
- ~ Allocated parking
- ~ 10 Year NHBC Guarantee

To contact **CITIZEN**

 08450 132713  www.citizenhousing.org.uk

 4040 Lakeside, Solihull Parkway, Birmingham Business Park, Birmingham, B37 7YN

3 Bedroom Floor layout and room sizes

The information is for guidance only and is not to be relied on as statements or representations of fact and they do not make or give representation or warrant whatsoever and do not form part of any contract. All room measurements shown in metric.

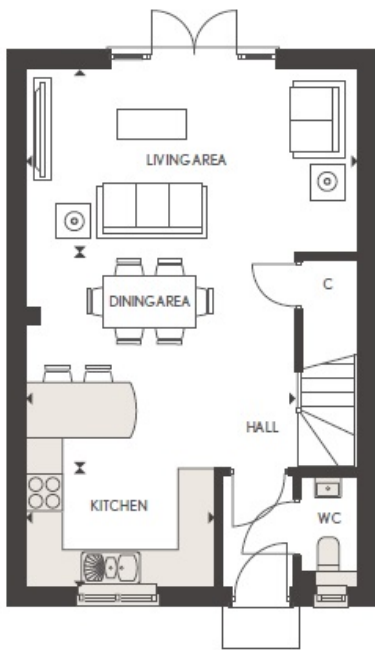


Development
Site Layout



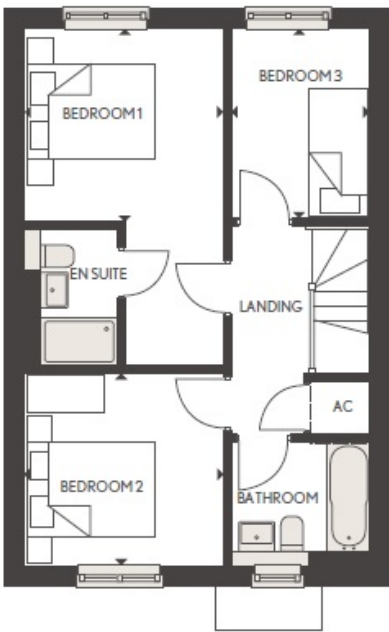
WOODLANDS PARK

WOODLANDS PARK



GROUND FLOOR

Living Area	5407mm x 3004mm	17'9" x 9'10"
Dining Area	4393mm x 3510mm	14'5" x 11'6"
Kitchen	3086mm x 1932mm	10'1" x 6'4"



FIRST FLOOR

Bedroom 1	3129mm x 3050mm	10'3" x 10'0"
Bedroom 2	3129mm x 3020mm	10'3" x 9'11"
Bedroom 3	2162mm x 3004mm	7'1" x 9'10"

**3 Bedroom
Semi Detached**
Plots 64, 65, 73 & 74



Houses available

Plot	64, 65, 73 & 74
Housetype	3 Bedroom semi detached with garage
	Plot 65 & 66 Now Available
Handover	Available Winter 2020
35% Share	£129,500
100% Price	£370,000
Total Monthly Rent	£618.51

For further details please contact our sales team on:

08450 132713

or email: sales@citizenhousing.org.uk