

If you want to own your own home, but don't think you can afford to, then we may be able to help. Read on for information about our schemes designed to help you get the home of your dreams.

NORTON RISE

Shared Ownership

Shared ownership helps you get on the property ladder if you aren't financially able to purchase 100% of a property on the open market.

Here's how it works...

- You will source your own mortgage and purchase one of our properties in shares.
- The minimum purchase share of a property is 25%.
- You will pay a rental figure of 2.75%* of the remaining share that we own.
- You are able to buy bigger shares initially or you can buy more shares in the future. This is called 'staircasing'.

What you need to do

When you find a property you like:

- Contact a financial advisor to provide you with a provisional agreement in principle.
- Register with www.helptobuyagent2.org.uk.
- Visit our website at www.signaturenewhomes.co.uk, to view all of our available homes.
- We will then process your application in order to see if you are eligible to purchase a share in one of our new properties.

We also have resale properties available to view, please visit www.signaturenewhomes.co.uk and follow the find a home icon.



Image for illustration purposes only

Citizen are selling 2 and 3 bedroom semi detached homes on this exclusive new development at Norton Rise, Main Road in the village of Austrey.

These new homes are due to be ready in Spring 2021.

Property Features

- ~ Fitted kitchen with stainless steel oven, hob & extractor
- ~ Vinyl flooring in kitchen, bathroom & downstairs w/c
- ~ Shower over bath
- ~ Downstairs w/c

General Features

- ~ Gas central heating
- ~ UPVc double glazing
- ~ Off road parking
- ~ 10 Year NHBC Guarantee

* Subject to change

3 Bedroom Floor layout

The information is for guidance only and is not to be relied on as statements or representations of fact and they do not make or give representation or warrant whatsoever and do not form part of any contract. All room measurements shown in metric.



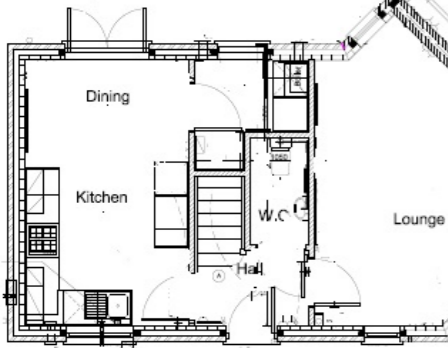
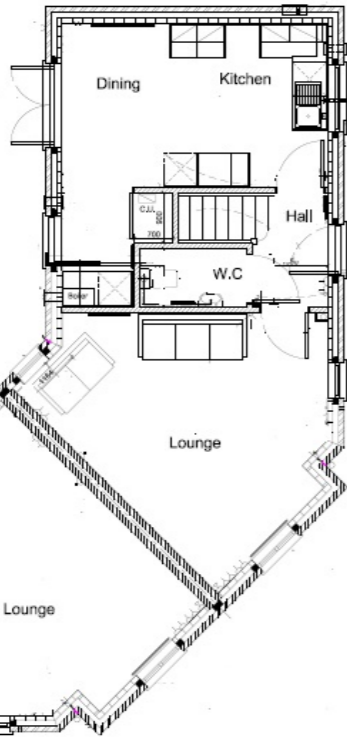
Development Site Layout



NORTON RISE

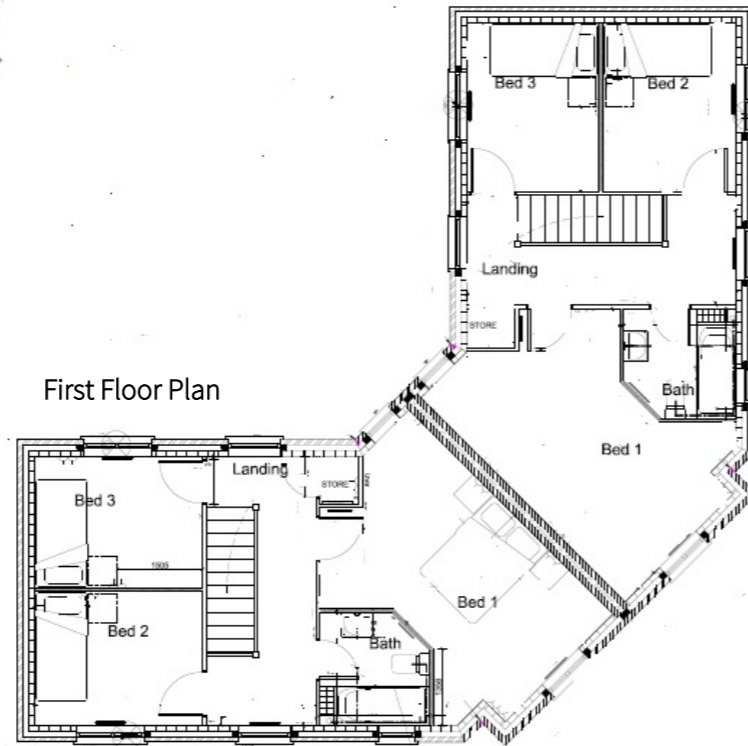
NORTON RISE

PLOT 39 (OPP)



Ground Floor Plan
PLOT 40 (AS)

First Floor Plan



3 Beds Plots 39 & 40

Houses available

Plot	39 & 40
House type	3 Bedroom Semi Detached
Handover	Spring 2021
35% Share	£96,250
100% Price	£275,000
Total Monthly Rent	£435.02*
	* includes estimated service charge

For further details please contact our sales team on:

08450 132 713

or email: sales@citizenhousing.org.uk