

If you want to own your own home, but don't think you can afford to, then we may be able to help. Read on for information about our schemes designed to help you get the home of your dreams.

OCTAVIA PLACE

Shared Ownership

Shared ownership helps you get on the property ladder if you aren't financially able to purchase 100% of a property on the open market.

Here's how it works...

- You will source your own mortgage and purchase one of our properties in shares.
- The minimum purchase share of a property is 25%.
- You will pay a rental figure of 2.75%* of the remaining share that we own.
- You are able to buy bigger shares initially or you can buy more shares in the future. This is called 'staircasing'.

What you need to do

When you find a property you like:

- Contact a financial advisor to provide you with a provisional agreement in principle.
- Register with **www.helptobuyagent2.org.uk**.
- Visit our website at **www.signaturenewhomes.co.uk**, to view all of our available homes.
- We will then process your application in order to see if you are eligible to purchase a share in one of our new properties.

We also have resale properties available to view, please visit **www.signaturenewhomes.co.uk** and follow the find a home icon.

* Subject to change

Available
NOW
Price
£84,000
for 35%
shared ownership

Image for illustration purposes only

Kingstone as a village has its own pub, the Bullring Inn, a Post Office and a number of local specialist shops and businesses, including well established farm shops in the area for fresh produce. The village also benefits from its own Academy Trust comprising a Primary School and High School.

Hereford provides the main shopping location, Waitrose, Tesco, Asda, Co-op and Morrisons are all represented with many other well known national stores.

Property Features


- ~ Fitted kitchen with oven, hob & extractor
- ~ Vinyl flooring in kitchen, bathroom & downstairs w/c
- ~ Shower over bath
- ~ Downstairs w/c

General Features

- ~ Gas central heating
- ~ UPVc double glazing
- ~ Off road parking
- ~ 10 Year NHBC Guarantee

To contact **CITIZEN**

 08450 132 713  www.citizenhousing.org.uk

 4040 Lakeside, Solihull Parkway, Birmingham Business Park, Birmingham, B37 7YN

3 Bedroom

Floor layout and room sizes

The information is for guidance only and is not to be relied on as statements or representations of fact and they do not make or give representation or warrant whatsoever and do not form part of any contract. All room measurements shown in metric.

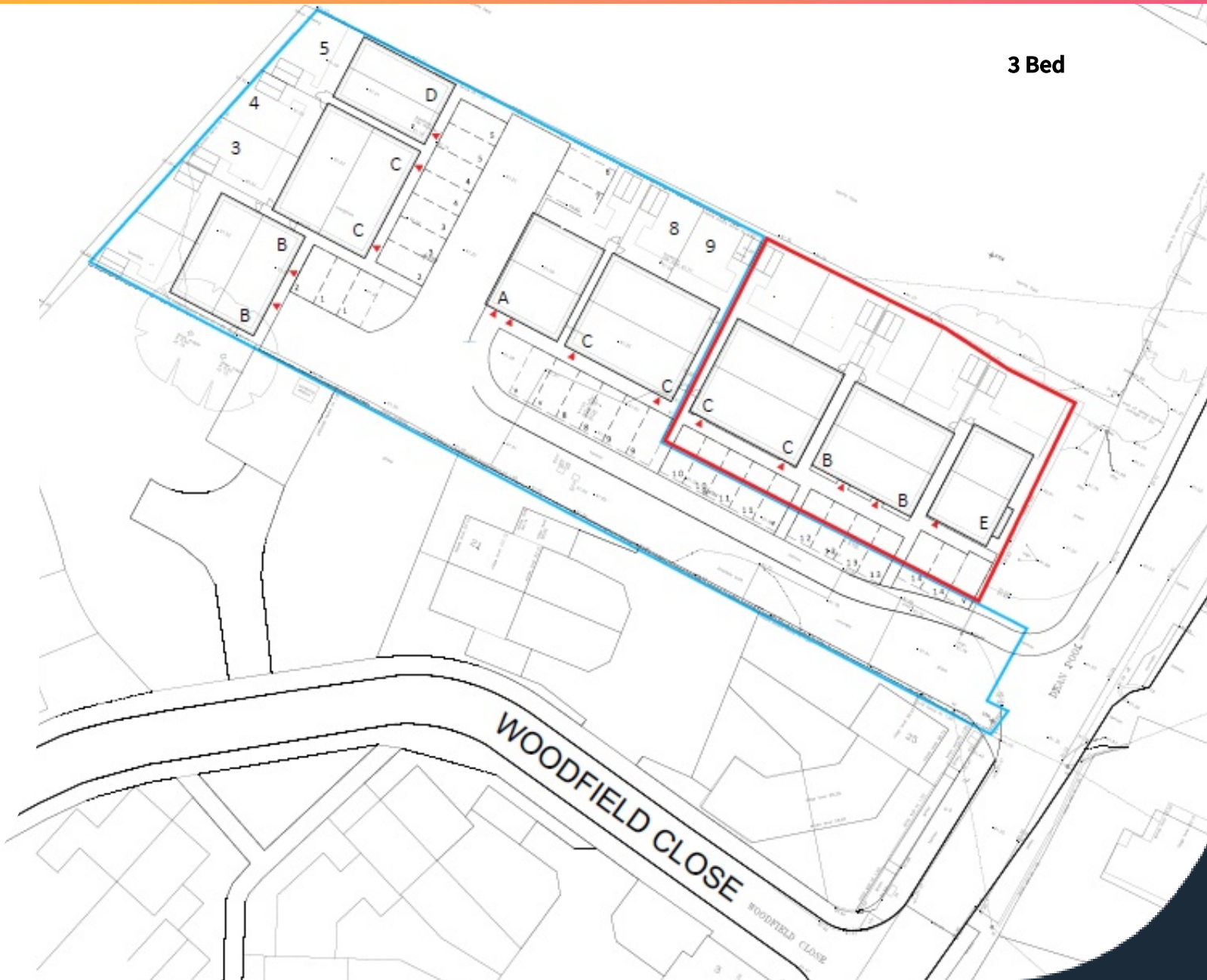
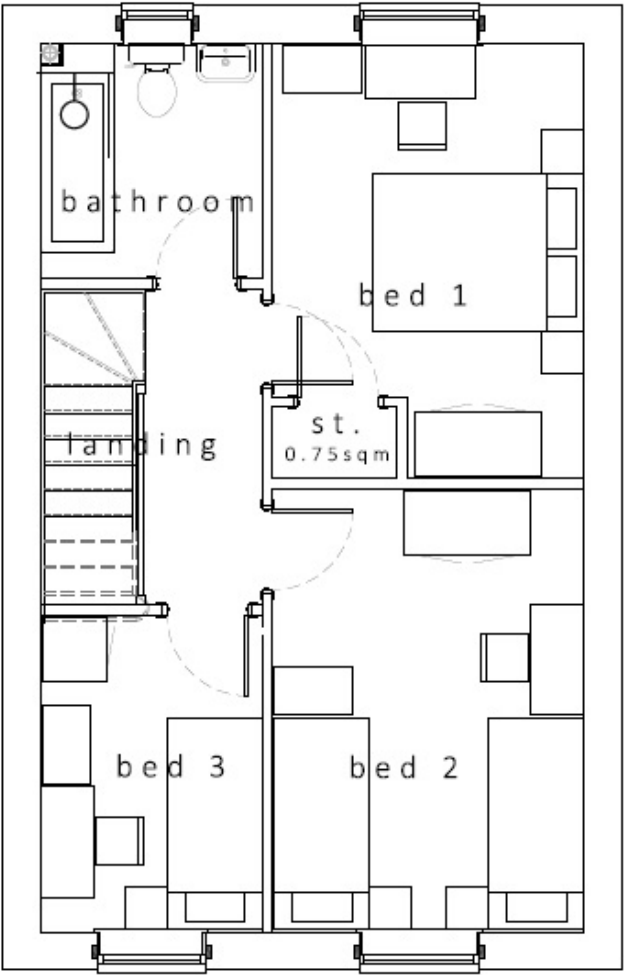
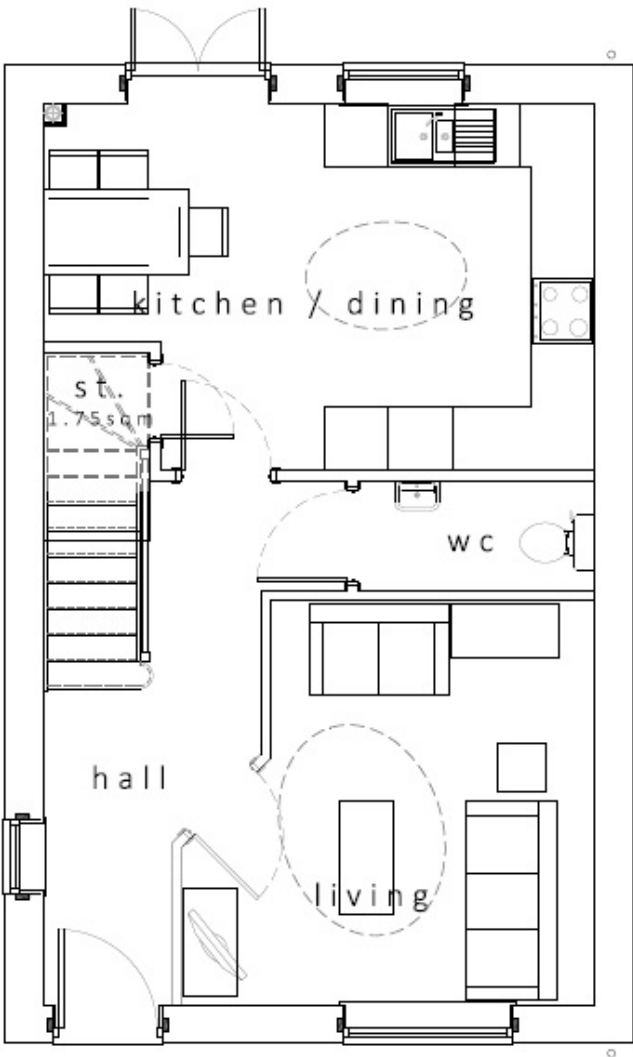


Development
Site Layout



OCTAVIA PLACE

OCTAVIA PLACE



Houses available

Plot	5
Housetype	3 Bed Detached
Handover	Summer 2021
35% Share	£84,000
100% Price	£240,000
Total Monthly Rent	£394.53

For further details please contact our sales team on:

08450 132 713

or email: sales@citizenhousing.org.uk

All applicants must register with Herefordshire Council Home Point choice lettings scheme at <https://www.home-point.info/Data/ASPPages/1/2.aspx> telephone 01432 260300 email info@home-point.info

If you want to own your own home, but don't think you can afford to, then we may be able to help. Read on for information about our schemes designed to help you get the home of your dreams.

OCTAVIA PLACE

Shared Ownership

Shared ownership helps you get on the property ladder if you aren't financially able to purchase 100% of a property on the open market.

Here's how it works...

- You will source your own mortgage and purchase one of our properties in shares.
- The minimum purchase share of a property is 25%.
- You will pay a rental figure of 2.75%* of the remaining share that we own.
- You are able to buy bigger shares initially or you can buy more shares in the future. This is called 'staircasing'.

What you need to do

When you find a property you like:

- Contact a financial advisor to provide you with a provisional agreement in principle.
- Register with **www.helptobuyagent2.org.uk**.
- Visit our website at **www.signaturenewhomes.co.uk**, to view all of our available homes.
- We will then process your application in order to see if you are eligible to purchase a share in one of our new properties.

We also have resale properties available to view, please visit **www.signaturenewhomes.co.uk** and follow the find a home icon.

* Subject to change

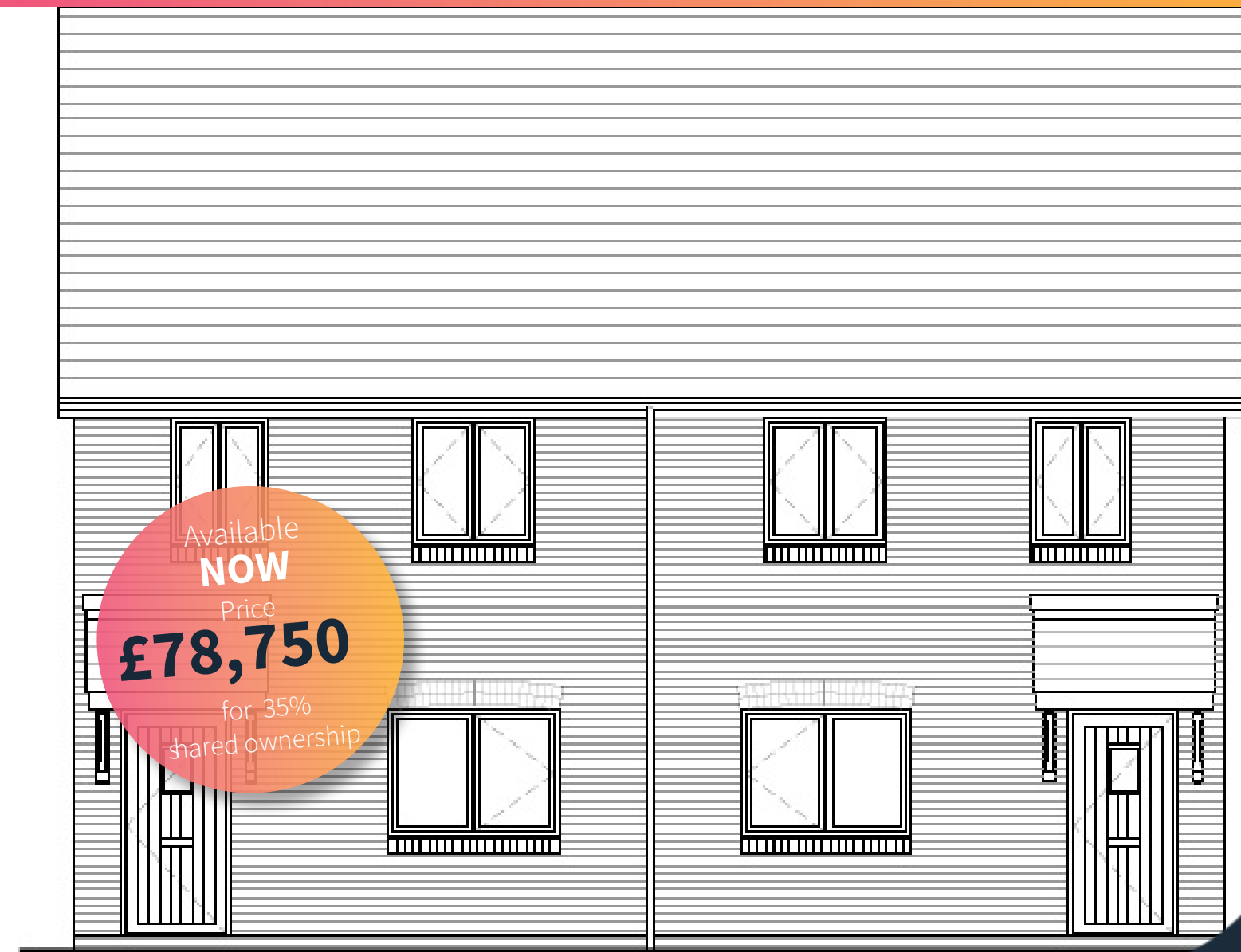


Image for illustration purposes only

Kingstone as a village has its own pub, the Bullring Inn, a Post Office and a number of local specialist shops and businesses, including well established farm shops in the area for fresh produce. The village also benefits from its own Academy Trust comprising a Primary School and High School.

Hereford provides the main shopping location, Waitrose, Tesco, Asda, Co-op and Morrisons are all represented with many other well known national stores.

Property Features


- ~ Fitted kitchen with oven, hob & extractor
- ~ Vinyl flooring in kitchen, bathroom & downstairs w/c
- ~ Shower over bath
- ~ Downstairs w/c

General Features

- ~ Gas central heating
- ~ UPVc double glazing
- ~ Off road parking
- ~ 10 Year NHBC Guarantee

To contact **CITIZEN**

 08450 132 713  www.citizenhousing.org.uk

 4040 Lakeside, Solihull Parkway, Birmingham Business Park, Birmingham, B37 7YN

3 Bedroom Floor layout and room sizes

The information is for guidance only and is not to be relied on as statements or representations of fact and they do not make or give representation or warrant whatsoever and do not form part of any contract. All room measurements shown in metric.

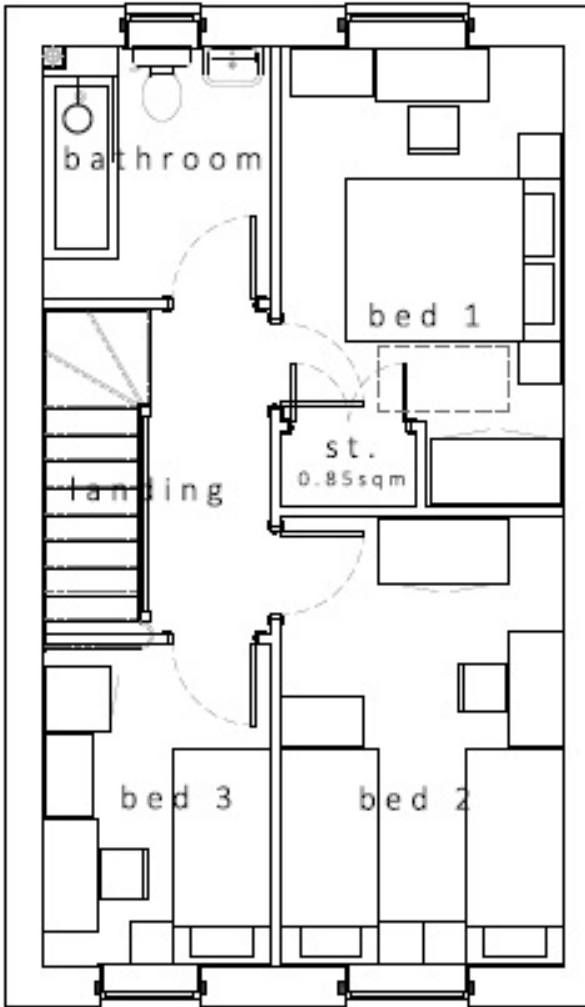
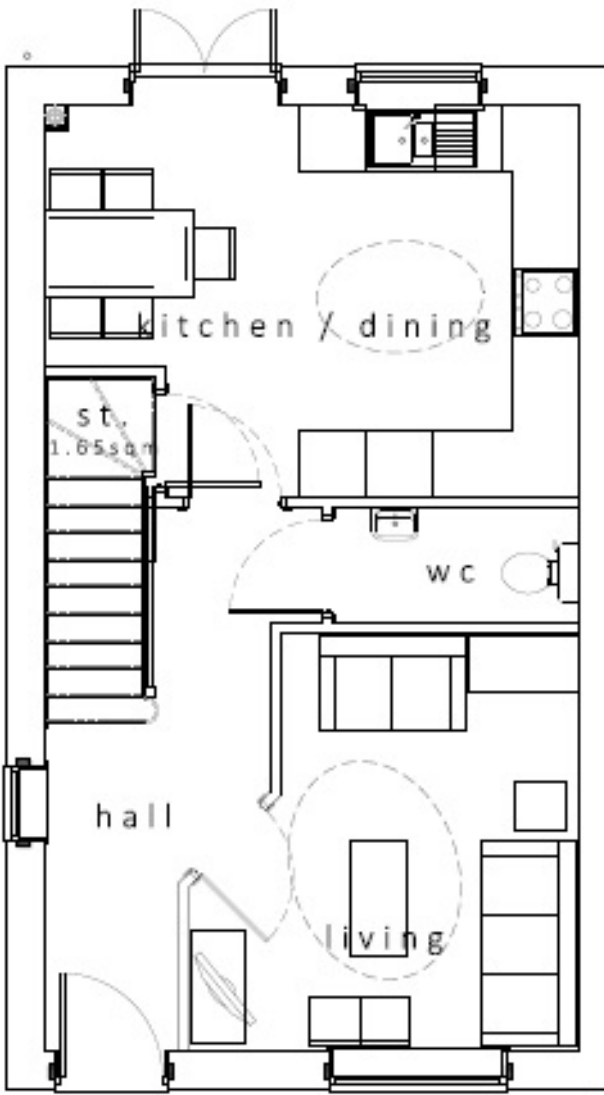


Development
Site Layout



OCTAVIA PLACE

OCTAVIA PLACE



Houses available

Plot	3, 4, 8 & 9
Housetype	3 Bed Semi Detached
Handover	Summer 2021
35% Share	£78,750
100% Price	£225,000
Total Monthly Rent	£371.39

For further details please contact our sales team on:

08450 132 713

or email: sales@citizenhousing.org.uk

All applicants must register with Herefordshire Council Home Point choice lettings scheme at <https://www.home-point.info/Data/ASPPages/1/2.aspx> telephone 01432 260300 email info@home-point.info